

Supporting Information

A self-assembled graphene/polyurethane foam for excellent performance of Electromagnetic Interference shielding

Figure S1: TGA of PUG sponge.

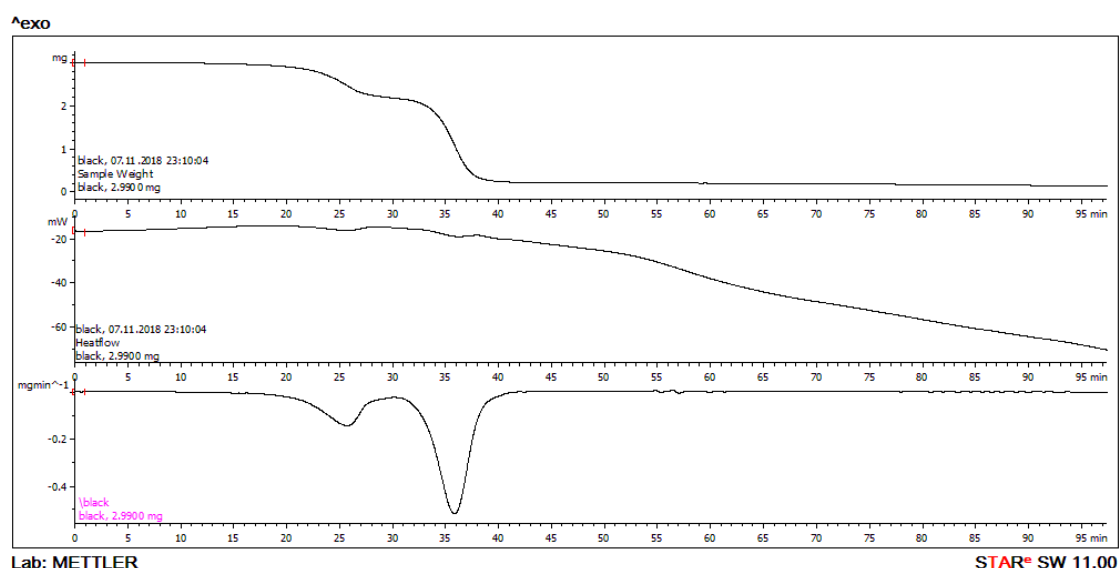


Figure S2:
TGA of PU sponge

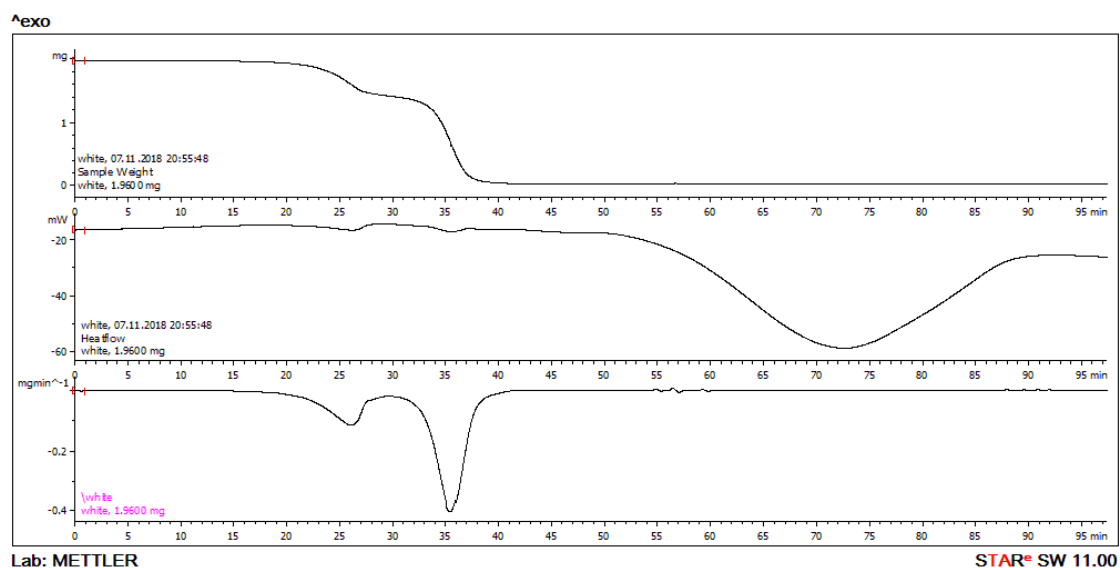
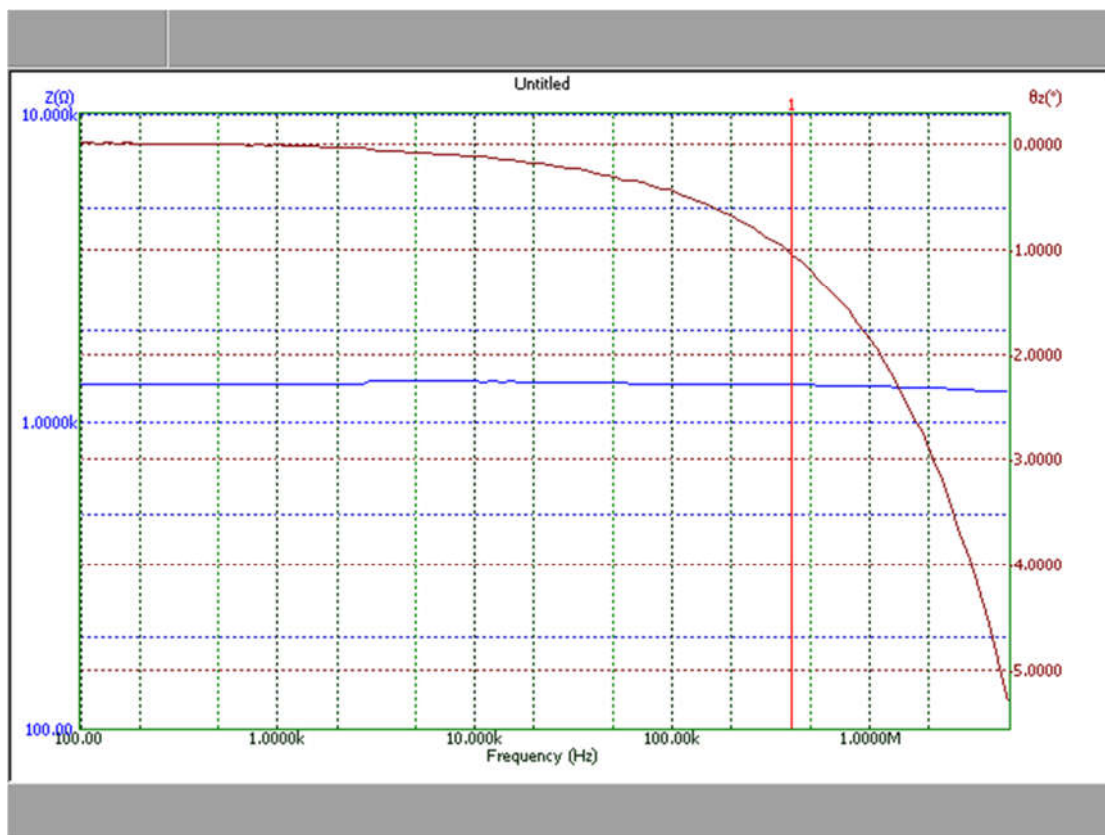


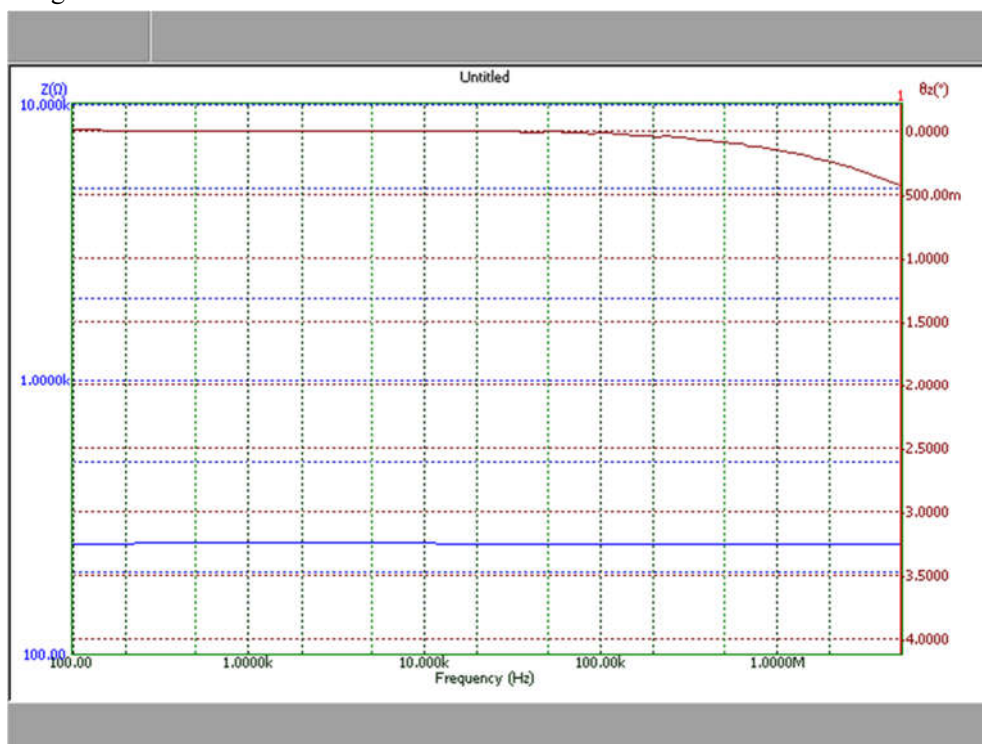
Figure S3: The test of electroconductivity of the PUG sponge in three different direction

The primary electroconductivity is $\sigma = \frac{L}{R.S} = 1.01 \times 10^{-4} \text{ S/m}$

Height:



Length:



Width:

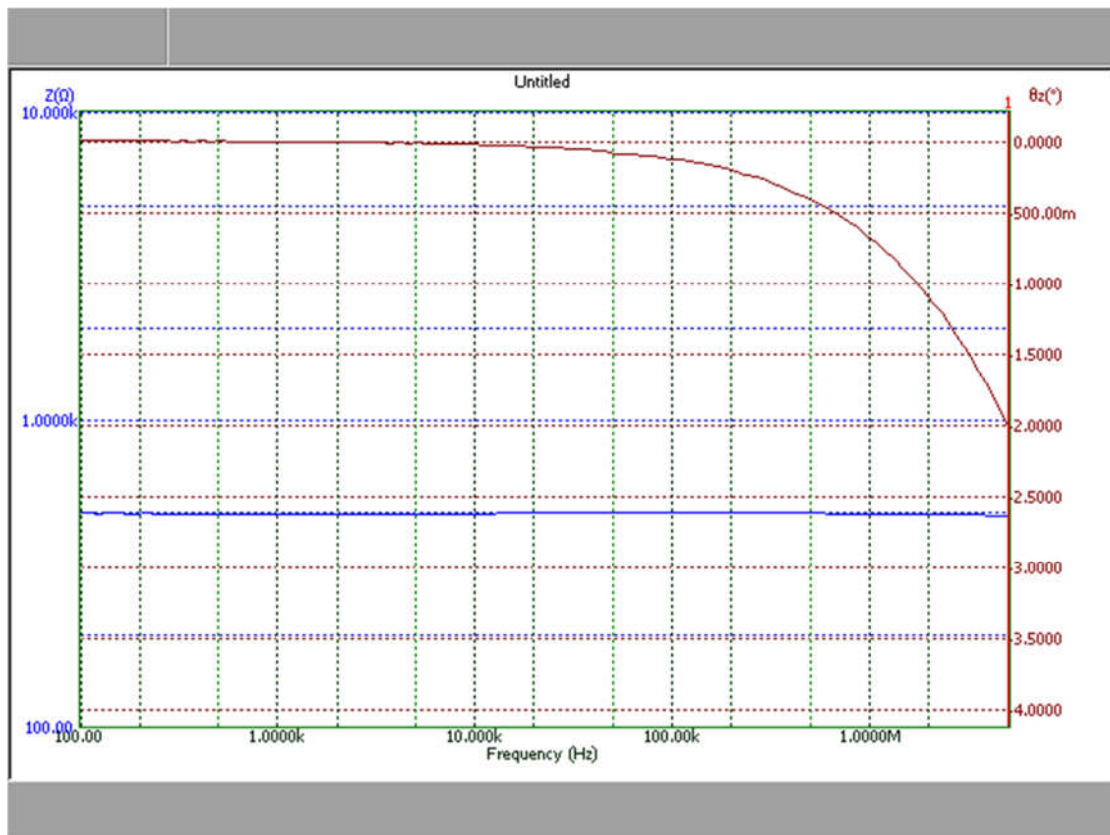
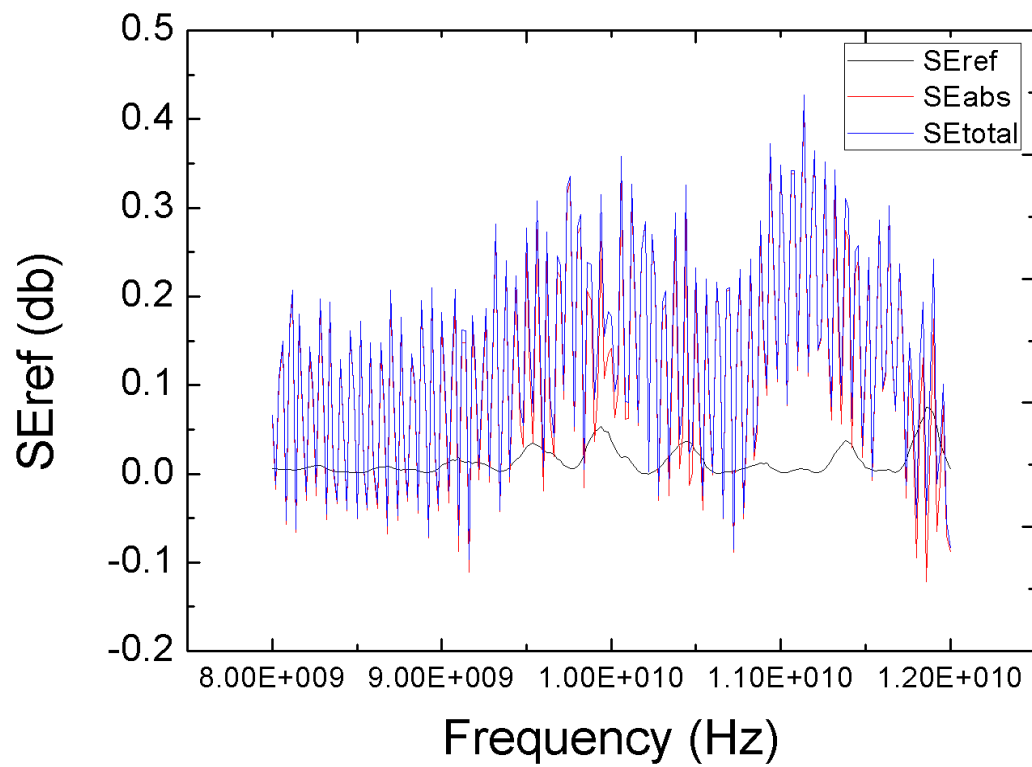


Figure S4:



Extra information:

Figure 1: XPS analysis of PUG sponge:

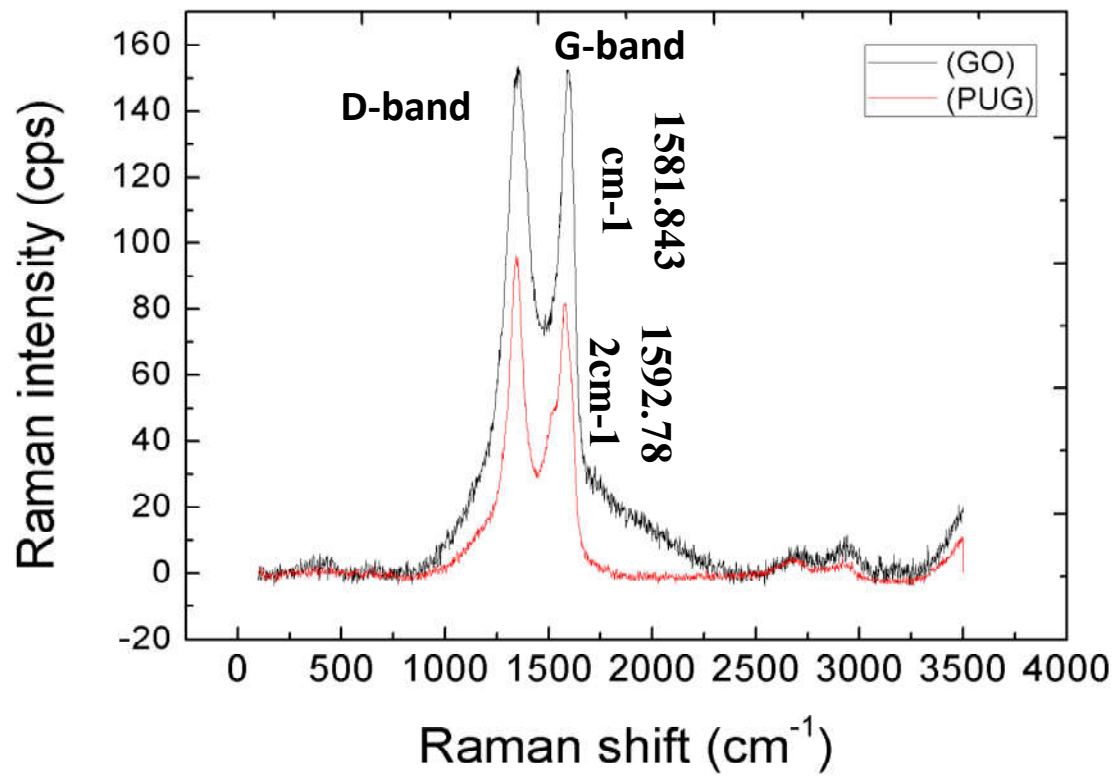


Figure 2: Other SEM of the PUG sponge

