



Fig. S1 Photograph of the synthesized sample with $n(\text{Cu}:\text{Co})=1:9$ in the precursor solution

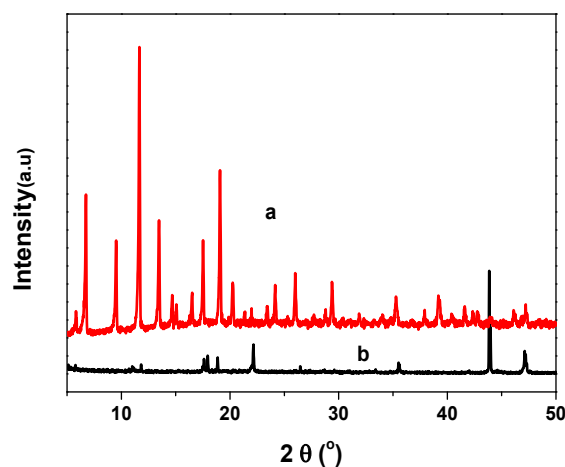


Fig. S2 XRD patterns of blue powder (a) and purple needle crystal (b) in Cu/Co-BTC

Table S1 The Cu/Co ratios of Cu/Co-BTC samples measured by ICP-AES

	Feeding Ratio ($n_{\text{Cu}}: n_{\text{Co}}$)	Cu^{2+} wt%	Co^{2+} wt%	$n_{\text{Cu}}: n_{\text{Co}}$ in MOF
1	10:90	/	/	/
2	20:80	17.85	0.54	30
3	30:70	17.91	0.37	44
4	40:60	19.44	0.43	41
5	50:50	20.04	0.28	65
6	70:30	20.70	0.11	174
7	80:20	21.55	0.036	553
8	90:10	15.97	0.0097	1527