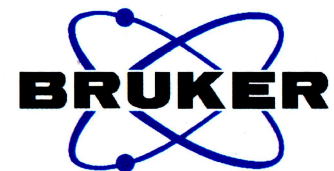


Immunoblot expression of G6pase and B-actin

Name of Sample: EB1C1
Spectrum No.: 3995

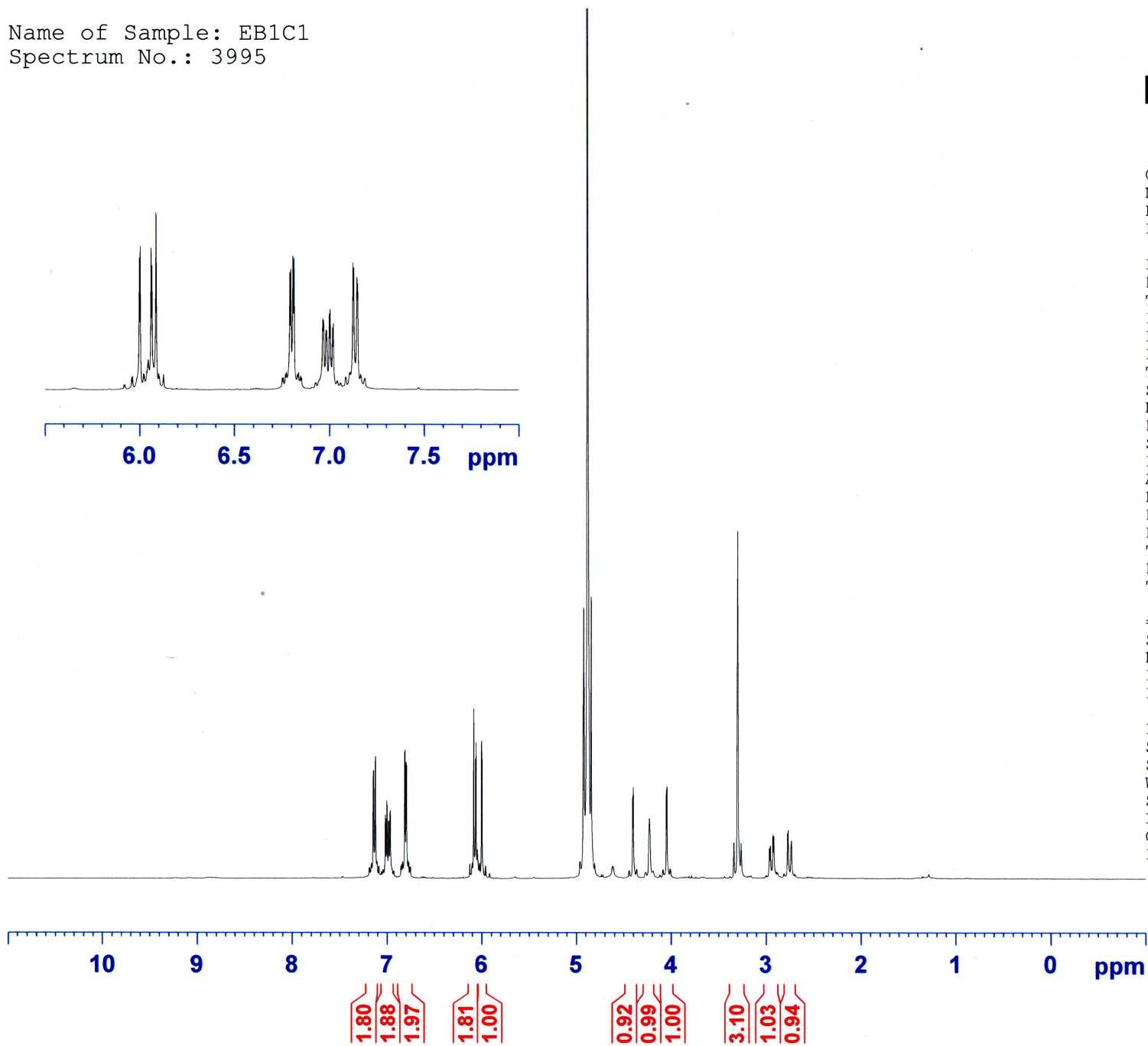


Current Data Parameters
NAME 3995
EXPNO 1
PROCNO 1

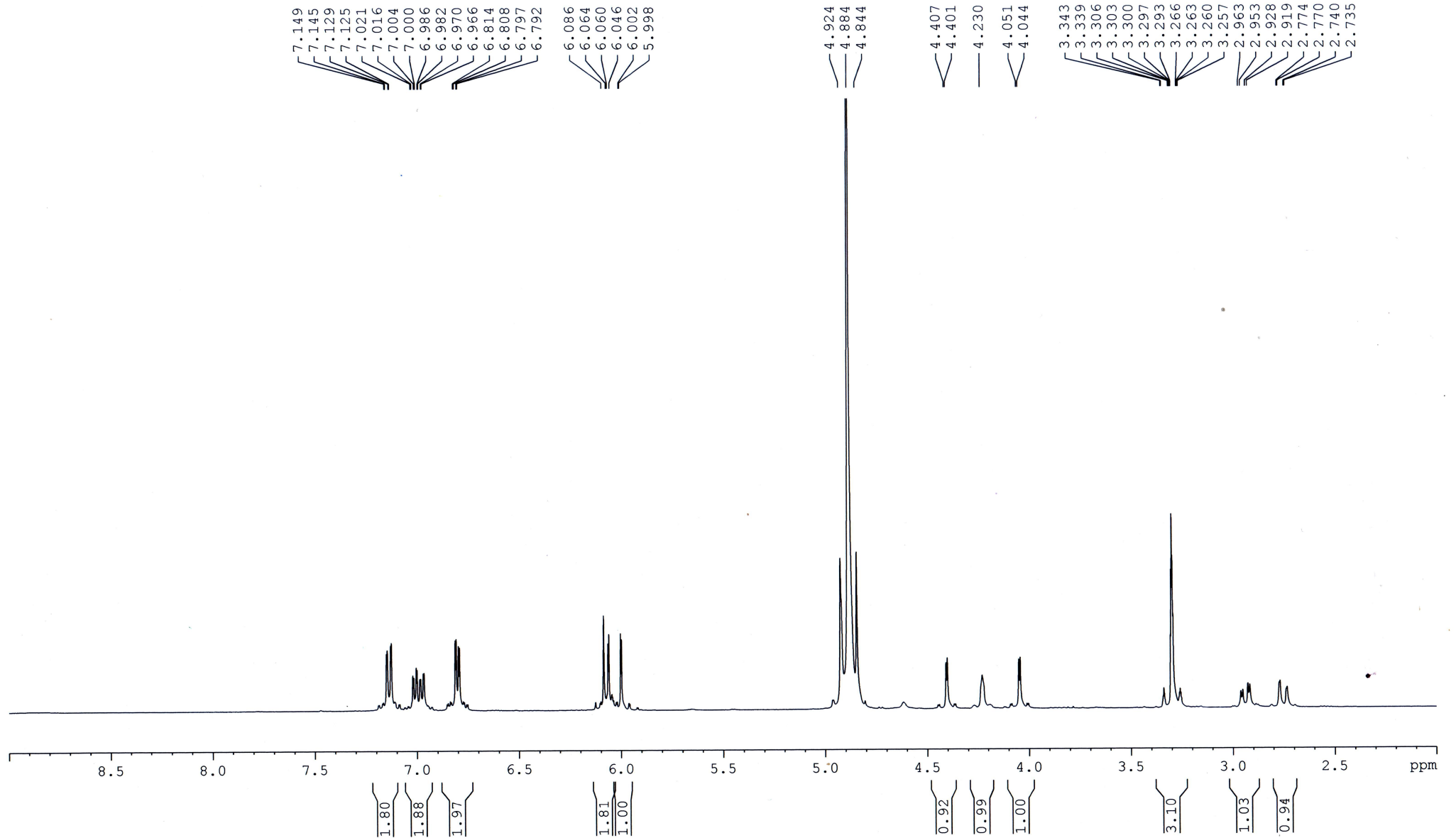
F2 - Acquisition Parameters
Date_ 20150421
Time_ 19.50
INSTRUM spect
PROBHD 5 mm PABBO BB/
PULPROG zg30
TD 65536
SOLVENT CD3OD_SPE
NS 8
DS 2
SWH 10000.000 Hz
FIDRES 0.152588 Hz
AQ 3.2767999 sec
RG 108.7
DW 50.000 usec
DE 6.50 usec
TE 293.8 K
D1 1.00000000 sec
TDO 1

==== CHANNEL f1 =====
SFO1 500.1530886 MHz
NUC1 1H
P1 11.75 usec
PLW1 17.00000000 W

F2 - Processing parameters
SI 65536
SF 500.1500153 MHz
WDW EM
SSB 0
LB 0.30 Hz
GB 0
PC 1.00



Name of Sample: EB1C1
Spectrum No.: 3995



Name of Sample: EB1C1
Spectrum No.: 3996

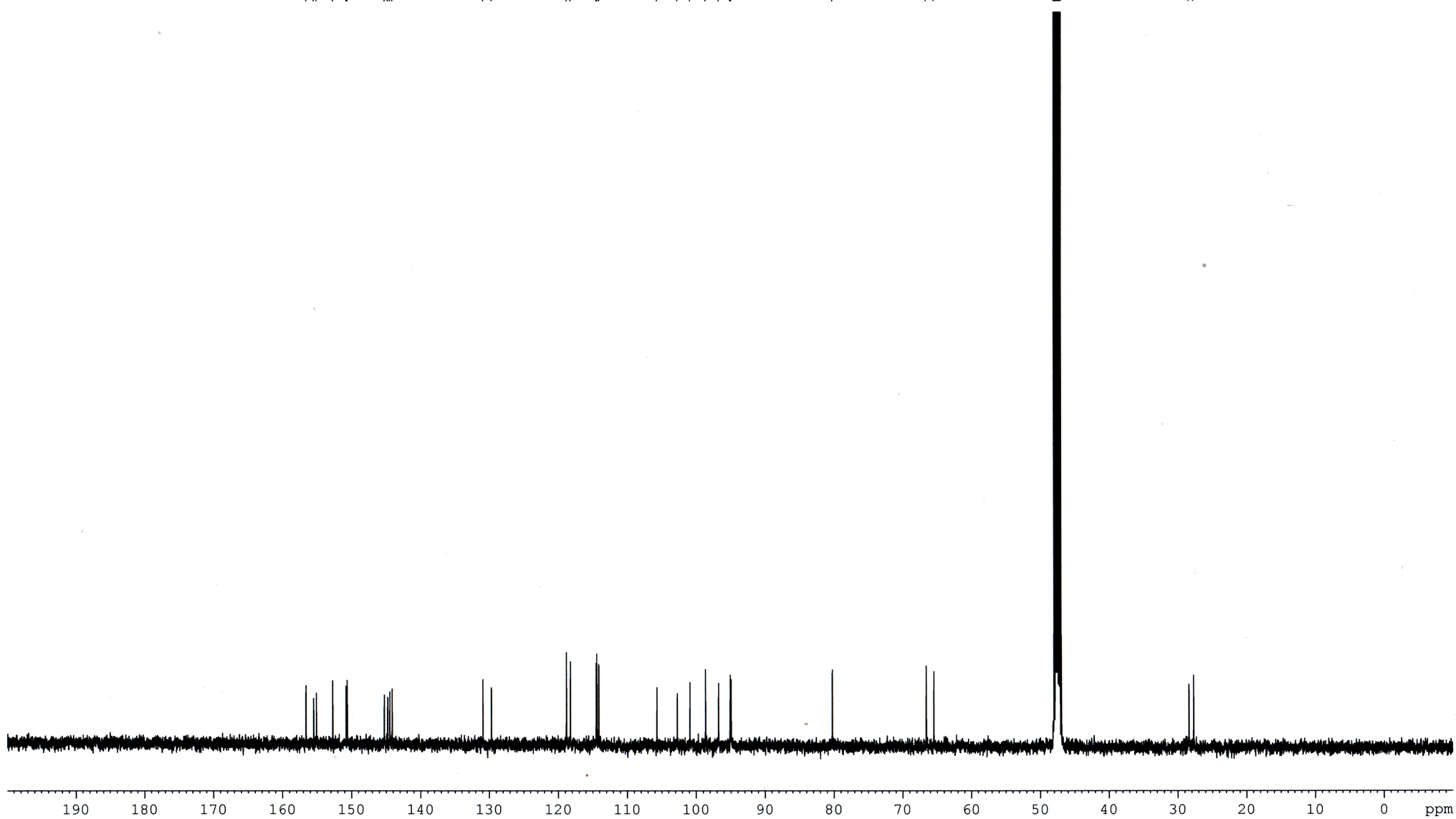
156.61
155.49
155.09
152.73
150.79
150.63
145.25
144.78
144.47
144.14

130.93
129.69

118.84
118.26
114.51
114.40
114.13
114.09

105.69
102.73
100.89
98.65
96.76
95.09
94.95

80.24
66.56
65.47
47.99
47.94
47.92
47.90
47.89
47.87
47.82
47.73
47.71
47.70
47.65
47.61
47.59
47.58
47.56
47.55
47.53
47.48
47.42
47.40
47.39
47.37
47.36
47.34
47.31
47.25
47.22
47.14
47.08
46.97
28.39
27.73



190 180 170 160 150 140 130 120 110 100 90 80 70 60 50 40 30 20 10 0 ppm

EBIC1
3997



118.97
118.38
114.63
114.52
114.26
114.22
96.88
95.21
95.07
80.36
66.69
65.59
48.23
48.06
47.89
47.72
47.55
28.52
27.86

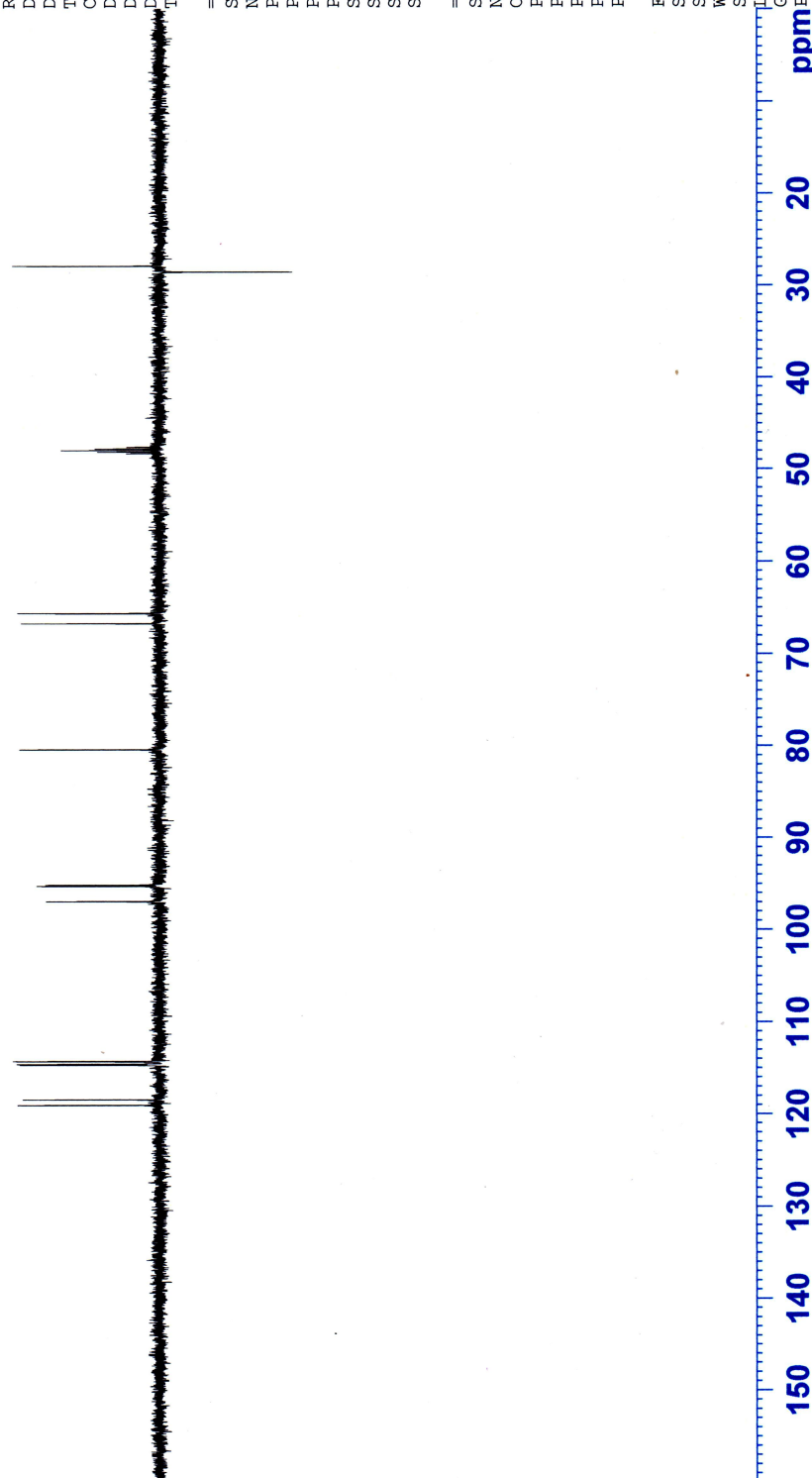
Current Data Parameters
NAME 3997
EXPNO 1
PROCNO 1

F2 - Acquisition Parameters
Date_ 20150421
Time 20.22
INSTRUM spect
PROBHD 5 mm PABBO BB/
PULPROG deptspl35
TD 65536
SOLVENT CD3OD_SPE
NS 365
DS 4
SWH 20161.291 Hz
FIDRES 0.307637 Hz
AQ 1.6252928 sec
RG 62.74
DW 24.800 usec
DE 6.50 usec
TE 294.2 K
CNST2 145.0000000
D1 2.0000000 sec
D2 0.00344828 sec
D12 0.00002000 sec
TD0 1

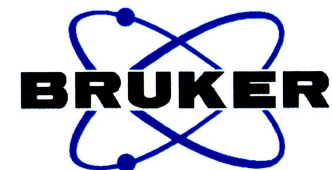
==== CHANNEL f1 =====
SFO1 125.7728780 MHz
NUC1 13C
P1 10.00 usec
PLW0 2000.00 usec
PLW1 84.00000000 W
SPNAM[5] Crp60comp.4
SPOALS 0.500
SPOFFS 0 Hz
SPW5 12.83399963 W

==== CHANNEL f2 =====
SFO2 500.1515995 MHz
NUC2 1H
CPDPRG[2] waltz16
P3 11.75 usec
P4 23.50 usec
PCPD2 80.00 usec
PLW2 17.00000000 W
PLWI2 0.36673000 W

F2 - Processing parameters
SI 32768
SF 125.7628180 MHz
WDW EM
SSB 0
LB 1.00 Hz
GB 0
PC 1.40



4035
EB1C1



Current Data Parameters
NAME 4035
EXPNO 1
PROCNO 1

F2 - Acquisition Parameters

Date_ 20150422
Time 20.00
INSTRUM spect
PROBHD 5 mm PABBO BB/
PULPROG hmqcqpqf
TD 1024
SOLVENT CD3OD_SPE
NS 4
DS 16
SWH 8012.820 Hz
FIDRES 7.825020 Hz
AQ 0.0638976 sec
RG 108.7
DW 62.400 usec
DE 6.50 usec
TE 293.8 K
CNST2 145.0000000
D0 0.00000300 sec
D1 1.50000000 sec
D2 0.00344828 sec
D12 0.00002000 sec
D13 0.00000400 sec
D16 0.00020000 sec
IN0 0.00001890 sec

ppm

20

40

60

80

100

120

140

160

ppm

=====
SFO1 500.1522661 MHz
NUC1 1H
P1 11.75 usec
P2 23.50 usec
PLW1 17.00000000 W

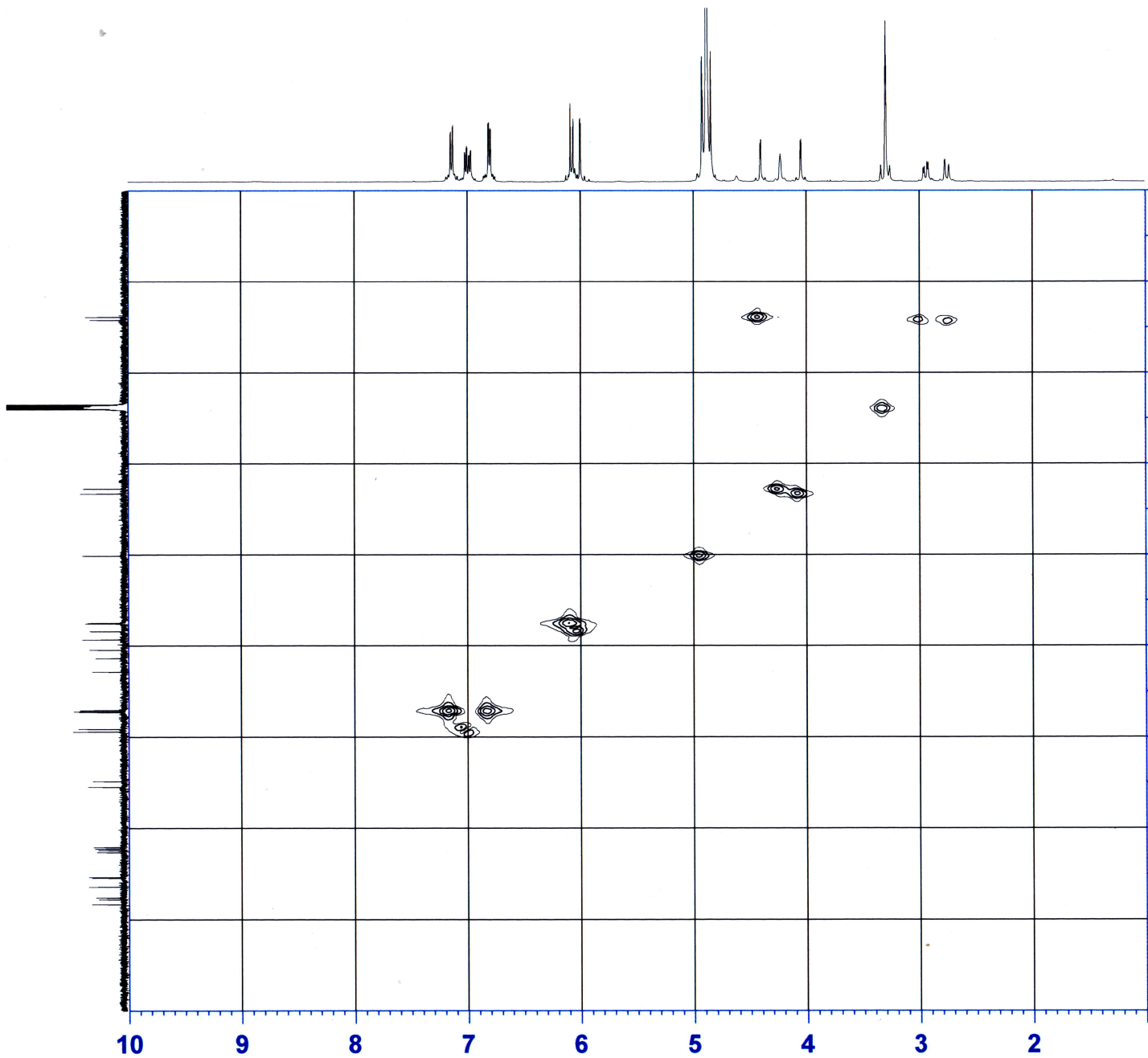
=====
SFO2 125.7722491 MHz
NUC2 13C
CPDPRG[2] garp
P3 10.00 usec
PCPD2 70.00 usec
PLW2 84.00000000 W
PLW12 1.71430004 W

=====
GPNAM[1] SMSQ10.100
GPNAM[2] SMSQ10.100
GPNAM[3] SMSQ10.100
GPZ1 50.00 %
GPZ2 30.00 %
GPZ3 40.10 %
P16 1000.00 usec

F1 - Acquisition parameters
TD 128
SFO1 125.7722 MHz
FIDRES 206.679901 Hz
SW 210.341 ppm
FrMODE QF

F2 - Processing parameters
SI 1024
SF 500.1500000 MHz
WDW QSINE
SSB 2
LB 0 Hz
GB 0
PC 1.40

F1 - Processing parameters
SI 1024
MC2 QF
SF 125.7628180 MHz
WDW QSINE
SSB 2
LB 0 Hz
GB 0



EB1C1
4034



Current Data Parameters
NAME 4034
EXPNO 1
PROCNO 1

F2 - Acquisition Parameters
Date_ 20150422
Time 19.28
INSTRUM spect
PROBHD 5 mm PABBO BB/
PULPROG hmbcgp1pndqf
TD 2048
SOLVENT CD3OD_SPE
NS 4
DS 16
SWH 8012.820 Hz
FIDRES 3.912510 Hz
AQ 0.1277952 sec
RG 108.7
DW 62.400 usec
DE 6.50 usec
TE 294.0 K
CNST2 145.0000000
CNST13 10.0000000
D0 0.00000300 sec
D1 1.50000000 sec
D2 0.00344828 sec
D6 0.05000000 sec
D16 0.00020000 sec
IN0 0.00001790 sec

===== CHANNEL f1 =====
SFO1 500.1531509 MHz
NUC1 1H
P1 11.75 usec
P2 23.50 usec
PLW1 17.00000000 W

===== CHANNEL f2 =====
SFO2 125.7753732 MHz
NUC2 13C
P3 10.00 usec
PLW2 84.00000000 W

===== GRADIENT CHANNEL =====
GPNAM[1] SMSQ10.100
GPNAM[2] SMSQ10.100
GPNAM[3] SMSQ10.100
GPZ1 50.00 %
GPZ2 30.00 %
GPZ3 40.10 %
P16 1000.00 usec

F1 - Acquisition parameters
TD 128
SFO1 125.7754 MHz
FIDRES 218.226257 Hz
SW 222.086 ppm
FnMODE QF

F2 - Processing parameters
SI 2048
SF 500.1500000 MHz
WDW SINE
SSB 0
LB 0 Hz
GB 0
PC 1.40

F1 - Processing parameters
SI 1024
MC2 QF
SF 125.7628180 MHz
WDW SINE
SSB 0
LB 0 Hz
GB 0

