

***Supporting information for:***

**Occurrence and Health Risk Assessment of Volatile Organic Compounds in  
Surface Water of Poyang Lake in March 2017**

**Pan Qin<sup>a,b</sup>, Fengmei Cao<sup>b</sup>, Shaoyong Lu<sup>a,b,\*</sup>, Linlin Li<sup>a,b</sup>, Xiaochun Guo<sup>b</sup>, Bin Zhao<sup>c</sup>,  
Zhengfen Wan<sup>b</sup>, Bin Bi<sup>b</sup>**

*<sup>a</sup>College of Water Sciences, Beijing Normal University, Beijing 100875, China*

*<sup>b</sup>State Environmental Protection Scientific Observation and Research Station for Lake Dongtinghu (SEPSORSLD), National Engineering Laboratory for Lake Pollution Control and Ecological Restoration, State Key Laboratory of Environmental Criteria and Risk Assessment, Research Centre of Lake Environment, Chinese Research Academy of Environmental Sciences, Beijing 100012*

*<sup>c</sup> Yuxi Normal University, Yuxi, Yunan 653100, China*

*<sup>d</sup> China National Environmental Monitoring Centre, 100012, China*

\*Corresponding author

Shaoyong Lu

Phone: +86-10-84935064

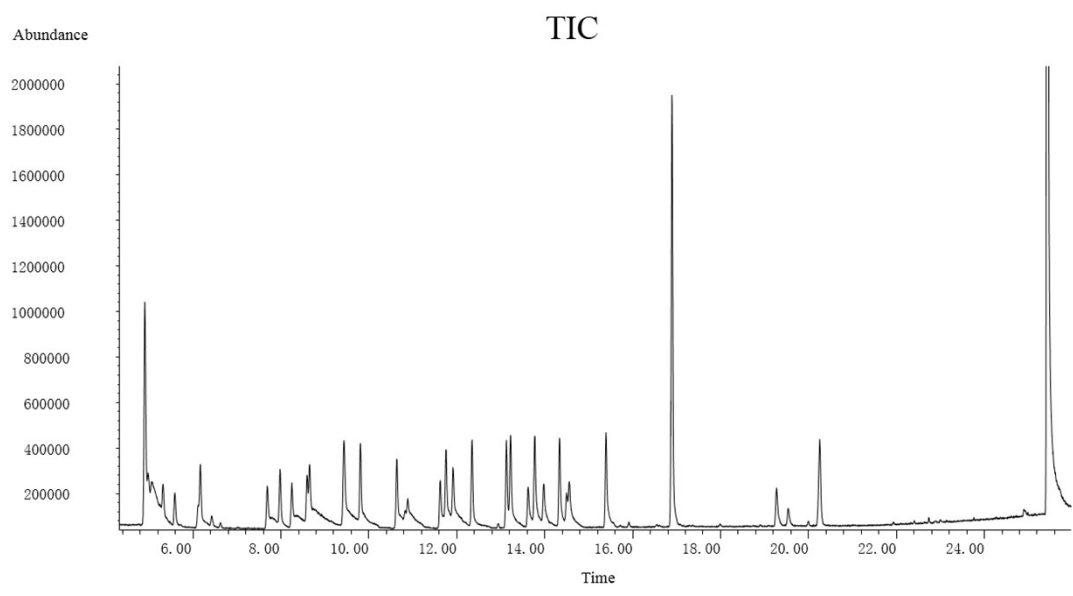
E-mail: [lushy2000@163.com](mailto:lushy2000@163.com)

**Table S1** LOD for the detected containments

VOCs	LOD(ng/L)
1,1-dichloroethylene	5.55
methylene chloride	3.73
trans-1,2-dichloroethylene	12.26
cis 1,2-dichloroethylene	4.37
chloroform	2.52
benzene	2.70
1,2-dichloroethane	33.19
trichloroethylene	8.36
1,2-dichloropropane	12.23
bromodichloromethane	6.64
toluene	0.89
tetrachloroethene	3.87
dibromochloromethane	6.44
chlorobenzene	4.89
ethylbenzene	2.71
m-xylene	10.94
p-xylene	5.89
o-xylene	9.83
1,3,5-trimethylbenzene	3.84
1,3-dichlorobenzene	3.06
1,2-dichlorobenzene	1.39
naphthalene	8.34

**Table S2** Risk assessment parameters of partial volatile organic pollutants

Containments	RfD	SF
1,1,1,2-tetrachloroethane	0.3	0.026
1,1,1-trichloroethane	2	-
1,1,2,2-tetrachloroethane	-	-
1,1,2-trichloroethane	0.004	0.057
1,1-dichloroethylene	0.78	0.0033
1,1-dichloroethylene	0.05	-
1,1-dichloropropene	-	0.05
1,2,3-trichlorobenzene	0.008	-
1,2,3-trichloropropane	-	-
1,2-dibromo-3-chloropropane	-	-
1,3-dichloropropane	-	-
2,2-dichloropropane	-	-
benzene	0.0005	0.015–0.055
bromodichloromethane	0.003	0.034
chlorobenzene	0.02	-
chloroform	0.01	ND
cis 1,2-dichloroethylene	0.02	-
dibromochloromethane	0.02	0.04
ethylbenzene	0.22	-
methylene chloride	0.006	0.002
naphthalene	-	-
p-xylene	-	-
styrene	0.2	-
toluene	0.0097	-
trans 1,3-dichloropropene	0.025	0.122
trans-1,2-dichloroethylene	-	-



**Fig S1** The TIC spectra of GC-MS