

**Supplementary Material for: Cause Analysis of Chatoyancy of
Sapphire from Shandong, China**

Jiaqi Yu, Xuemei He *, Zhiyun Lu

School of Gemology, China University of Geosciences, Beijing 100083, China

**Corresponding author:*

Xuemei He, E-mail: hexuemei@cugb.edu.cn

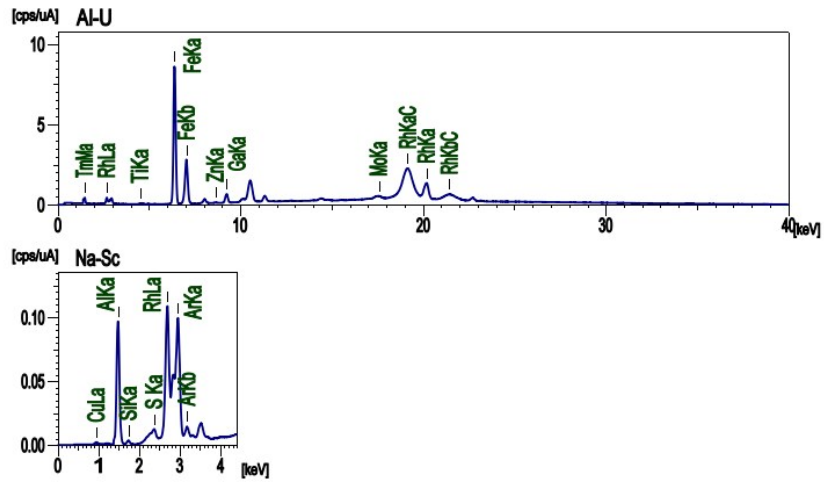


Figure S1 XRF spectrum of sample A2

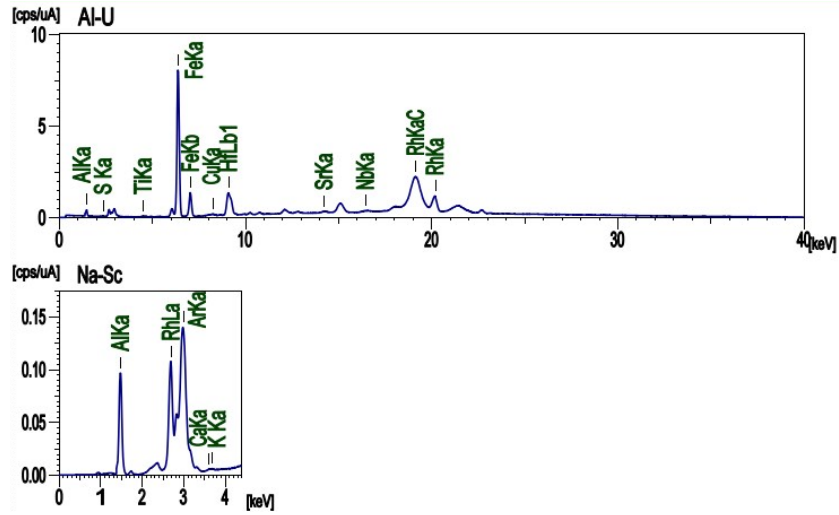


Figure S2 XRF spectrum of sample A3

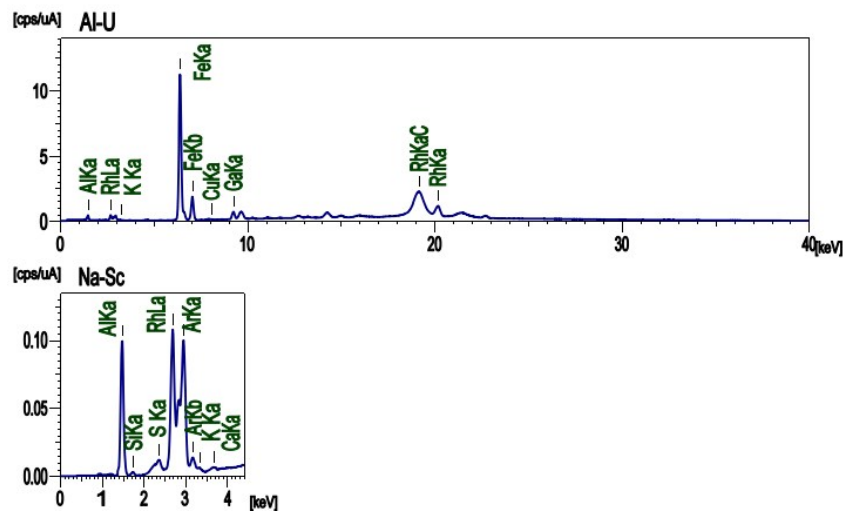


Figure S3 XRF spectrum of sample B1

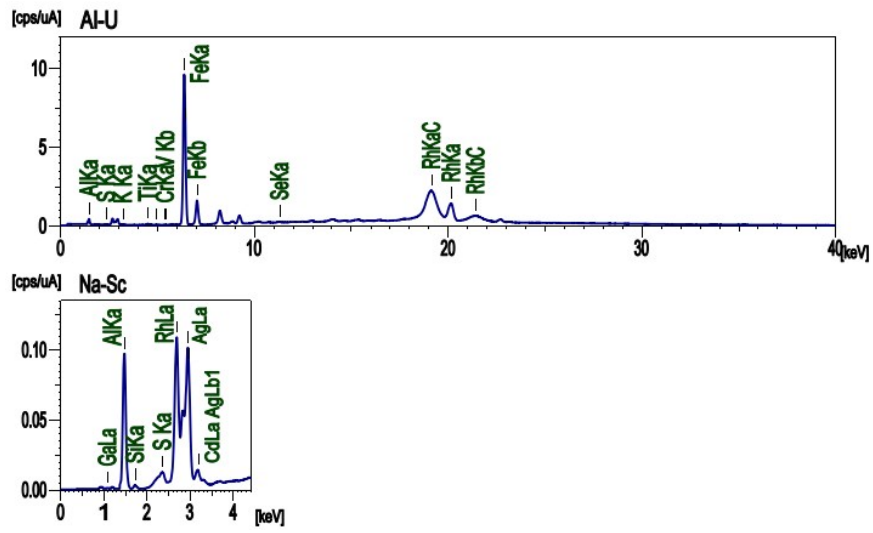


Figure S4 XRF spectrum of sample B2

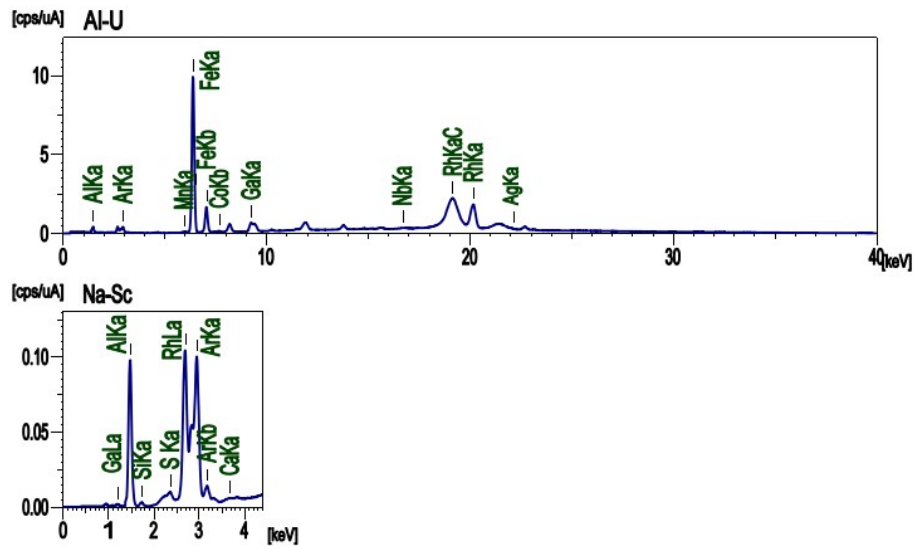


Figure S5 XRF spectrum of sample B3