

Supporting Information

Construction of the antifungal dual-target (SE, CYP51) pharmacophore model and the discovery of novel antifungal inhibitors

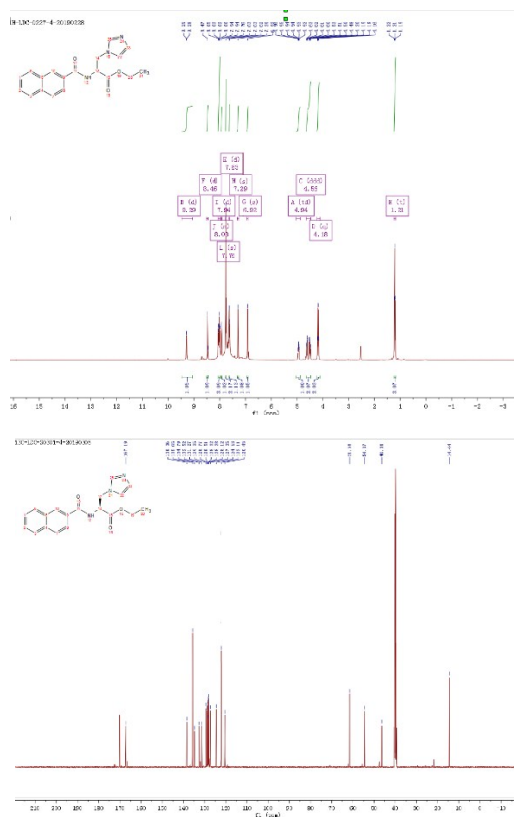
Yue Dong ^a, Min Liu ^a, Jian Wang ^b, Ding Zhuang ^a, Bin Sun ^{a*}

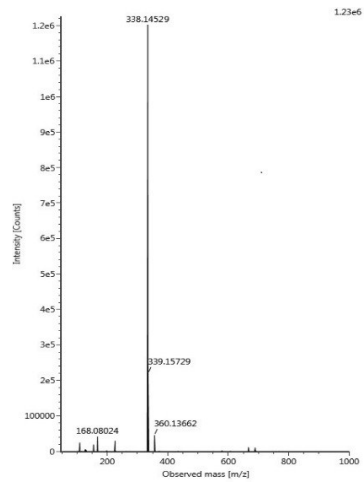
^aInstitute of BioPharmaceutical Research, Liaocheng University, 1 Hunan Road, Liaocheng 252000, PR China

^bKey Laboratory of Structure-Based Drug Design & Discovery of Ministry of Education, School of Pharmaceutical Engineering, Shenyang Pharmaceutical University, 103 Wenhua Road, Shenhe District, Shenyang 110016, PR China

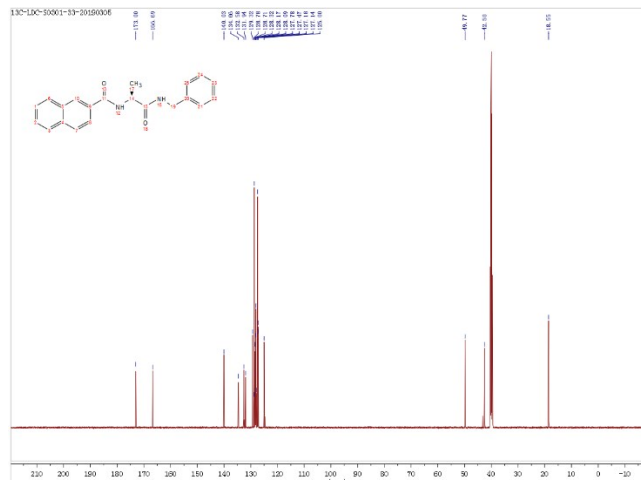
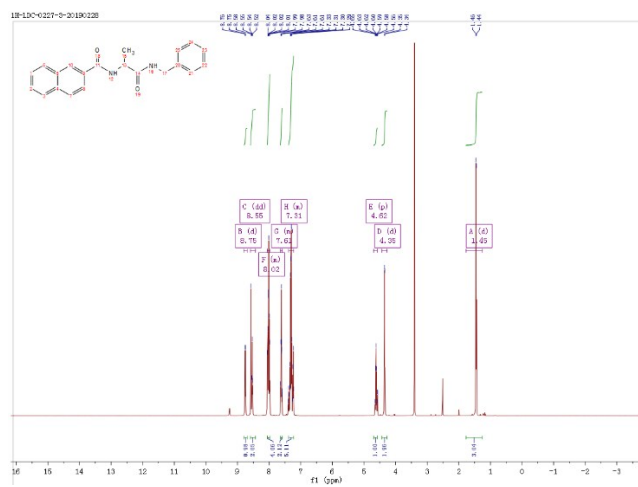
*Corresponding author: Bin Sun, E-mail: goengoy@163.com

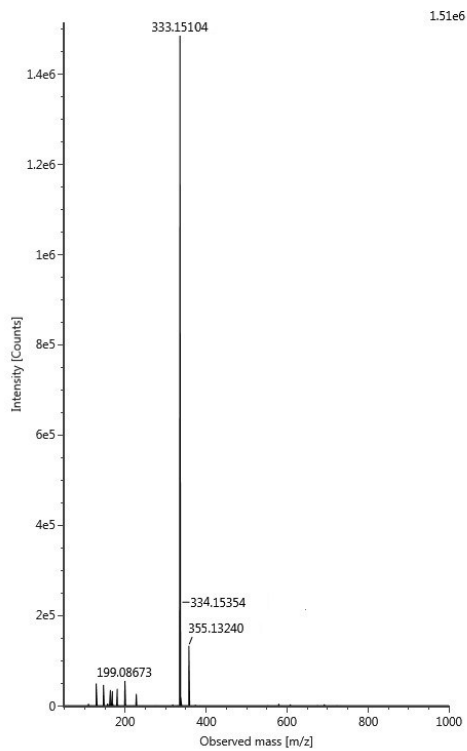
¹H NMR, ¹³C NMR spectra and HRMS of **5**





¹H NMR, ¹³C NMR spectra and HRMS of 6





¹H NMR, ¹³C NMR spectra and HRMS of 8

