

Figure S1. Maximum-likelihood (A) and minimum-evolution (B) trees were constructed based on 16S rRNA gene sequences, showing the relationship between strain PT-20 and related taxa. Bootstrap values (%) were based on 1000 replicates and were shown for branches. Bar, 0.005 expected changes per site.

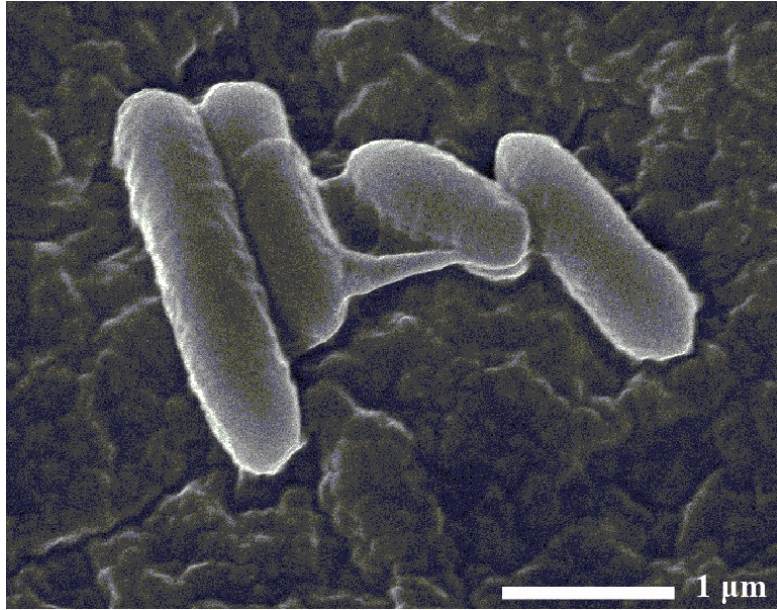


Figure S2. Scanning electron micrograph of cells of strain PT-20. Bar, 1 μm ; magnification, $\times 15000$.

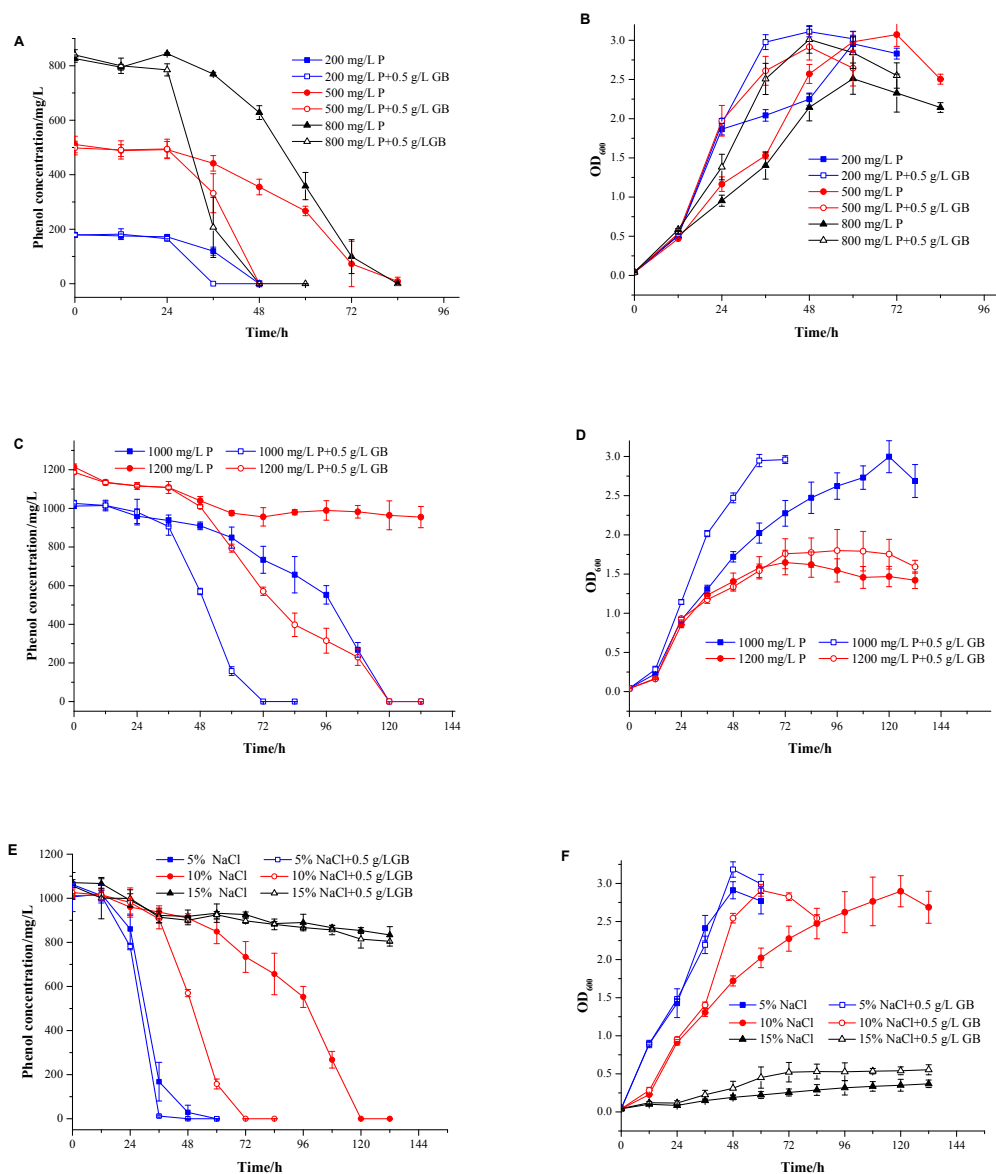


Figure S3. (A/B/C/D): The effects of adding glycine betaine on phenol degradation and cell growth with different initial phenol concentration, the medium used for phenol degradation was TSB medium supplemented with 10% NaCl. **(E/F):** The effects of adding glycine betaine on phenol degradation and cell growth under different NaCl concentrations, the medium used was TSB medium supplemented with 1000 mg/L phenol and different concentration of NaCl. All measures were performed in triplicate. P: Phenol; GB: Glycine Betaine.