

Supporting Information

Beneficial effects of potassium iodide incorporation on grain boundary and interface of perovskite solar cells

Yin Yang^a, Lili Wu^{a,b,}, Xia Ha^{ab,*}, Zeguo Tang^c, Huagui Lai^a, Jingquan Zhang^{a,b}, Wenwu Wang^a and Lianghuan Feng^a*

a. Institute of Solar Energy Materials and Devices, College of Materials Science and Engineering, Sichuan University, Chengdu 610064, China.

b. Institute of New Energy and Low-carbon technology, Sichuan University, Chengdu 610027, China.

c. Chengdu Research Center, Hanergy Thin Film Power Group Ltd., Chengdu 610200, China

Corresponding Authors

* Tel & Fax: +86 (0)28 85412542

*E-mail: wulili@scu.edu.cn

*E-mail: hao.xia0808@scu.edu.cn

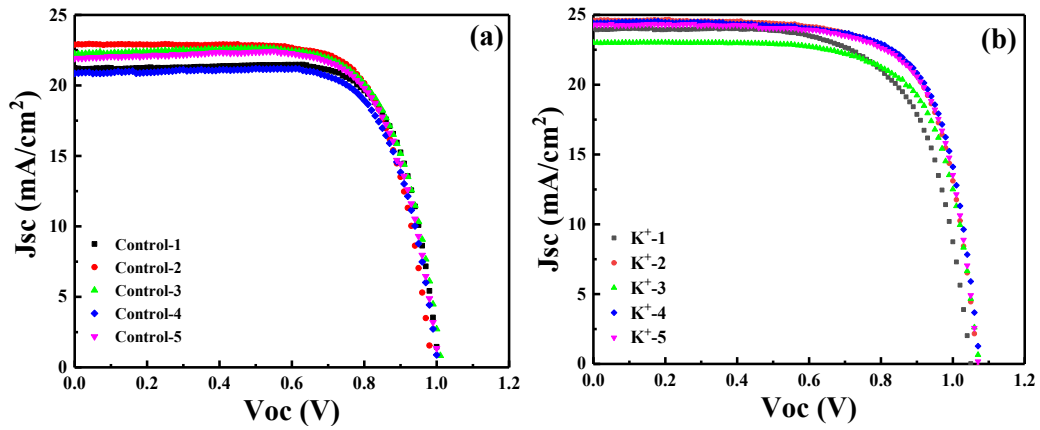


Fig. S1 J-V curves of five (a) control and (b) incorporated devices.

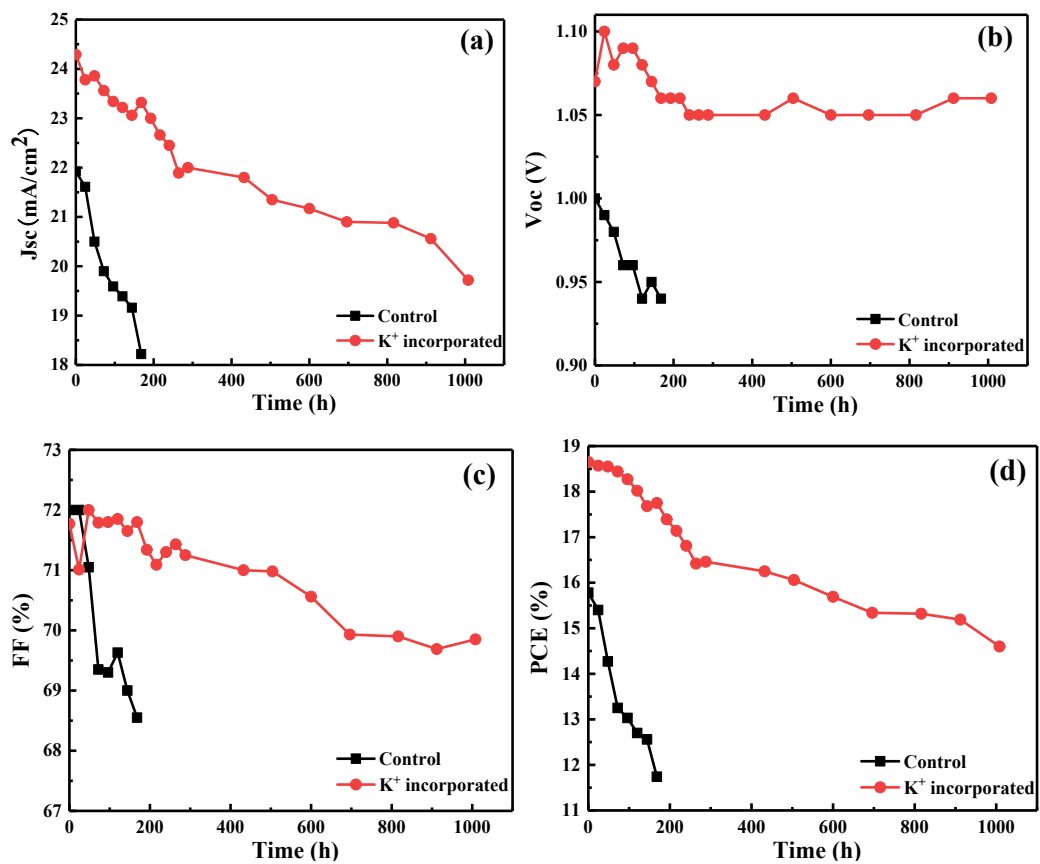


Fig. S2 The absolute values of (a) J_{sc} , (b) V_{oc} , (c) FF and (d) PCE obtained from the degradation process of control and KI incorporated devices.

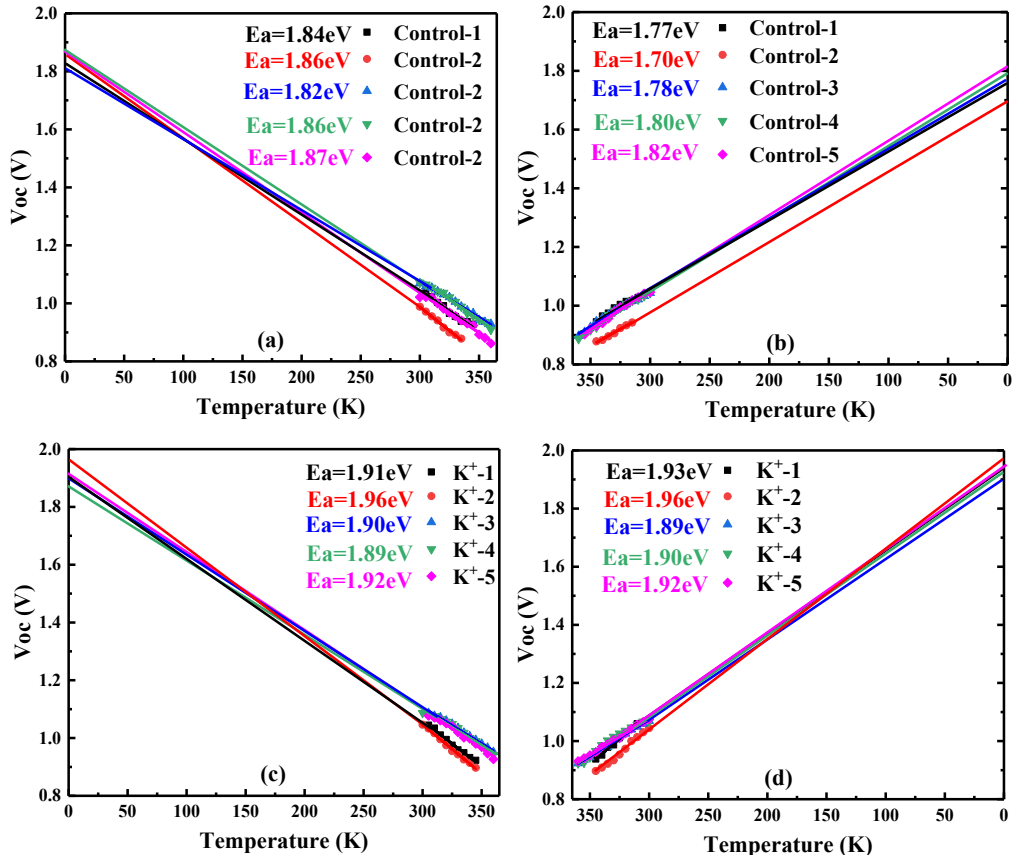


Fig. S3 JVT curves of control and KI incorporated devices during (a),(c) Heating and (b),(d) Cooling process.