

Supplementary Information

A manuscript submitted to RSC Advances

Particle sizes and mass ratios of phosphor on light color performance of green phosphor thin film and laminated white light emitting diode

Ningze Zhuo,^{a,b,c} Na Zhang,^{b,c} Teng Jiang,^d Peng Chen,^{a*} Haibo Wang,^{b,c*}

a. School of Electronic Science and Engineering, Nanjing University, Nanjing 210093, China.

b. Institute of Optoelectronic Materials of Light Industry, Nanjing 210015, China.

c. Research Institute of Electric Light Source Materials, Nanjing Tech University, Nanjing 210015, China.

d. College of Materials Science and Engineering, Nanjing Tech University, Nanjing 210015, China.

*Corresponding Author: Peng Chen and Haibo Wang (pchen@nju.edu.cn, wanghaibo88@163.com)

***Corresponding author:**

Peng Chen

School of Electronic Science and Engineering

Nanjing University

Nanjing 210093, China

E-Mail: pchen@nju.edu.cn

Haibo Wang

Research Institute of Electric Light Source Materials

Institute of Optoelectronic Materials of Light Industry

Nanjing TECH University

Nanjing 210093, China

E-Mail: wanghaibo88@163.com

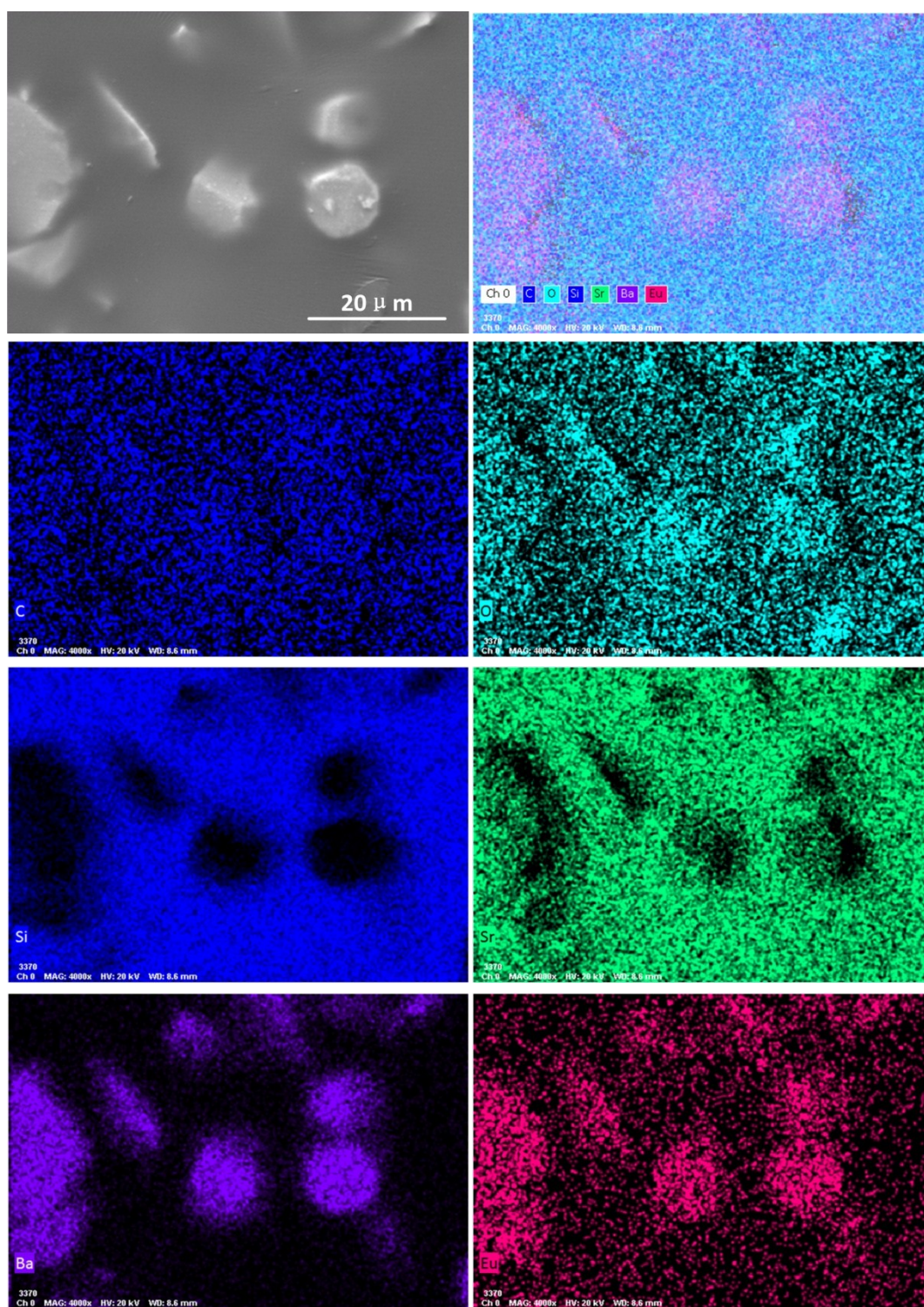


Figure.S1 EDS mapping of all the elements in the green PTF

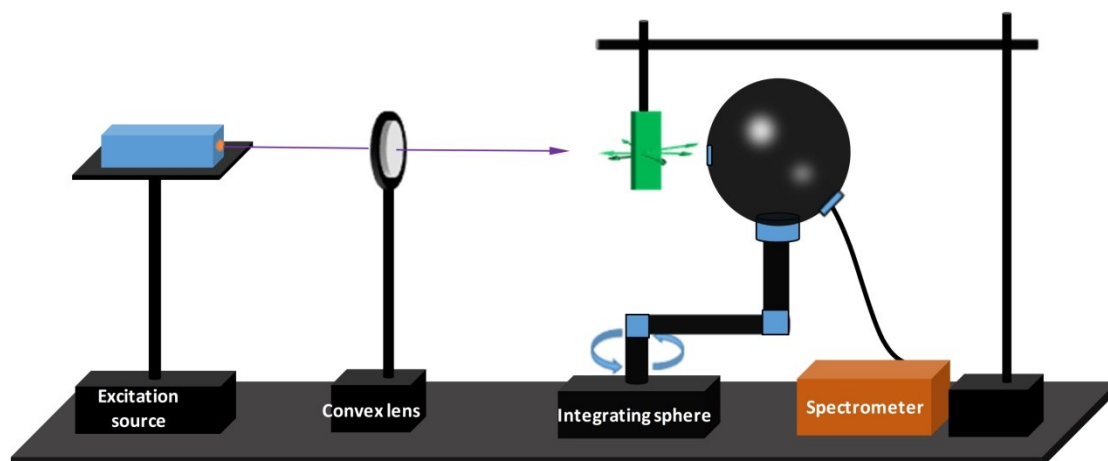


Figure.S2 Schematic diagram of light distribution tester

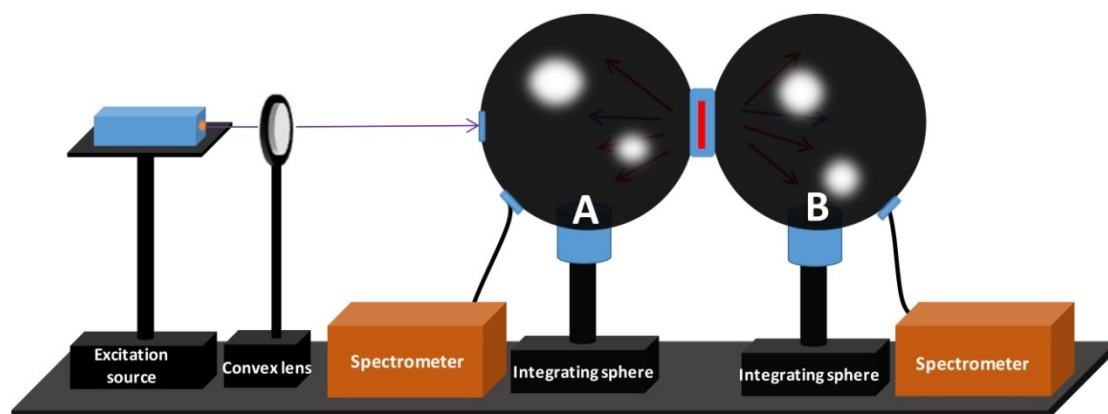


Figure.S3 Schematic diagram of double integrating sphere