

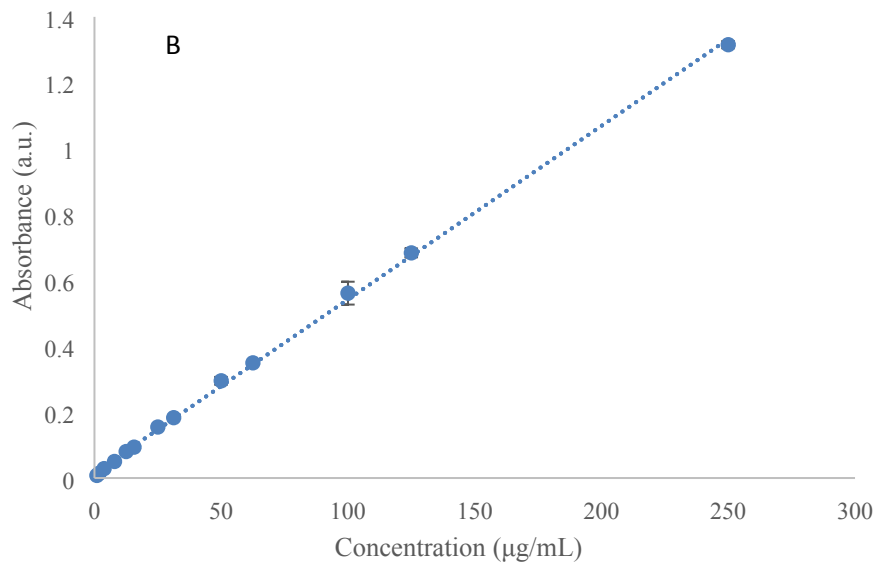
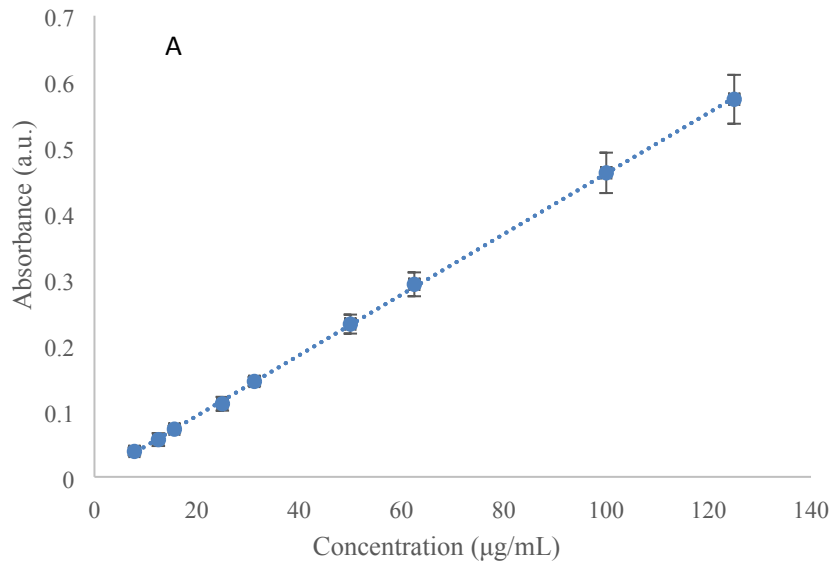
Supplementary Information:

Table S1: ImageJ analysis of fibre diameters for various PCL% w/w at 0.5 mg/mL and 1 mg/mL flow rates.

Sample PCL (%)	Fibre diameter at 0.5 mg/h (nm)	Fibre diameter at 1 mg/h (nm)
4	277 ± 72.0	312 ± 85.0
7	246 ± 76.0	293 ± 83.0
8	551 ± 313	549 ± 315
9	462 ± 184	418 ± 146
10	464 ± 204	465 ± 330

Table S2: Drug release kinetics of Colistin from various electrospun mesh samples.

Mesh Sample	Zero Order		First Order		Higuchi Model		Korsmeyer-Peppas Model		Hixson Model	
	R ²	K ₀	R ²	K ₁	R ²	K _H	R ²	n	R ²	K _C
Col	0.766	0.9696	0.789	-0.0065	0.9266	4.269	0.9849	0.0857	0.7814	0.0201
ColAu(-)	0.6403	2.565	0.1051	-0.0253	0.8274	11.674	0.9771	0.0744	0.2833	0.1844
ColAu(+)	0.7798	0.5346	0.8037	-0.0052	0.9193	3.612	0.9829	0.0878	0.7958	0.0163
ColVan	0.7014	0.7391	0.7763	-0.0127	0.8572	3.2567	0.9852	0.0316	0.7522	0.0286
ColVanAu(-)	0.4384	0.6214	0.7715	-0.0582	0.6206	2.9471	0.8842	0.0255	0.6583	0.0714
ColVanAu(+)	0.3886	0.4718	0.4221	-0.0044	0.555	2.2471	0.816	0.0351	0.4108	0.0122



S1: Calibration curves of (A) Colistin and (B) Vancomycin in DPBS using UV-Vis Spectroscopy at 214 nm and 290 nm respectively.