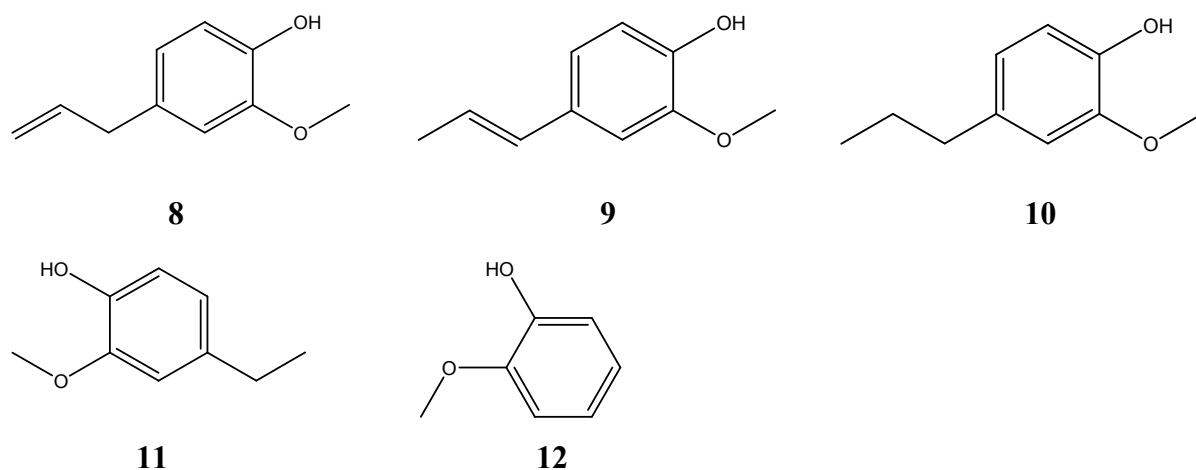


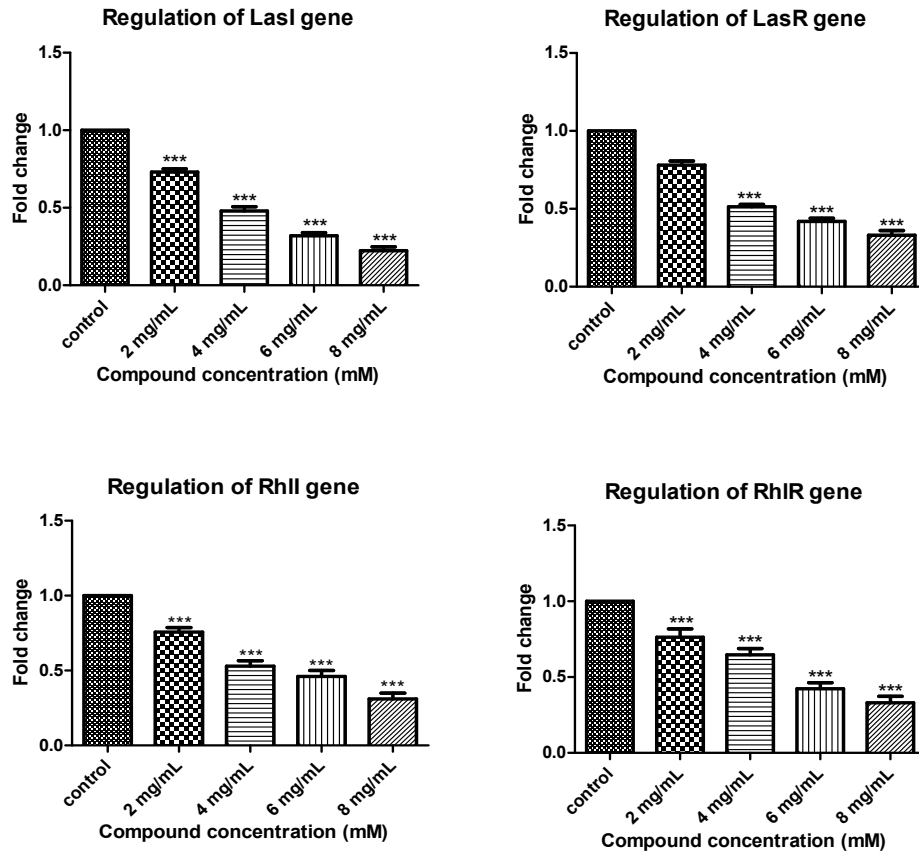
Fig. S1. Growth curve analysis in dose dependent manner.



**Fig. S2. Chemical structures of compounds inhibited biofilm formation in gram negative bacteria. Eugenol (8), Isoeugenol (9), 2-methoxy-4-propylphenol (10), 4-ethylguaiacol (11), guaiacol (12)**

No.	Gene Name	Primer sequence (5'-3')	Amplicon size (bp)
<b>1</b>	<b><i>lasI</i> F</b>	GGCTGGGACGTTAGTGTCAT	<b>104</b>
	<b><i>lasI</i> R</b>	AAAACCTGGGCTTCAGGAGT	
<b>2</b>	<b><i>lasR</i> F</b>	ACGCTCAAGTGGAAAATTGG	<b>111</b>
	<b><i>lasR</i> R</b>	TCGTAGTCCTGGCTGTCCTT	
<b>3</b>	<b><i>rhlI</i> F</b>	AAGGACGTCTTCGCCTACCT	<b>130</b>
	<b><i>rhlI</i> R</b>	GCAGGCTGGACCAGAATATC	
<b>4</b>	<b><i>rhlR</i> F</b>	CATCCGATGCTGATGTCCAACC	<b>101</b>
	<b><i>rhlR</i> R</b>	ATGATGGCGATTTCCTCCGGAAC	
<b>5</b>	<b><i>rpsL</i> F</b>	GCAACTATCAACCAGCTGGTG	<b>231</b>
	<b><i>rpsL</i> R</b>	GCTGTGCTCTTGCAGGTTGTG	

**Table S1. PCR primers for real time PCR**



**Fig. S3.** Effect of compound 7 on *lasI*, *lasR*, *rhII*, and *rhIR* genes in *P. aeruginosa*