

Electronic Supplementary Information

Electrostatic Attraction Induced Aggregation of Polymer Dots for the Facile Detection of Melamine Migration

Guiyun Zhang^a, Yimin Chen^a, Jianhua Xie^a, Changqing Lin^a, Weiqiang Yang^{*b}

^a The Applied Technical Engineering Center of Further Processing and Safety of Agricultural Products, Fujian Provincial collaborative innovation institute of food industry technology, Zhangzhou Institute of Technology, Zhangzhou, 363000, China.

^b Fujian Provincial Key Laboratory of Pollution Monitoring and Control, Fujian Provincial Key Laboratory of Modern Analytical Science and Separation Technology, College of Chemistry and Environment, Minnan Normal University, Zhangzhou, 363000, China.

^{*}Corresponding author. E-mail: yangwq1@163.com.

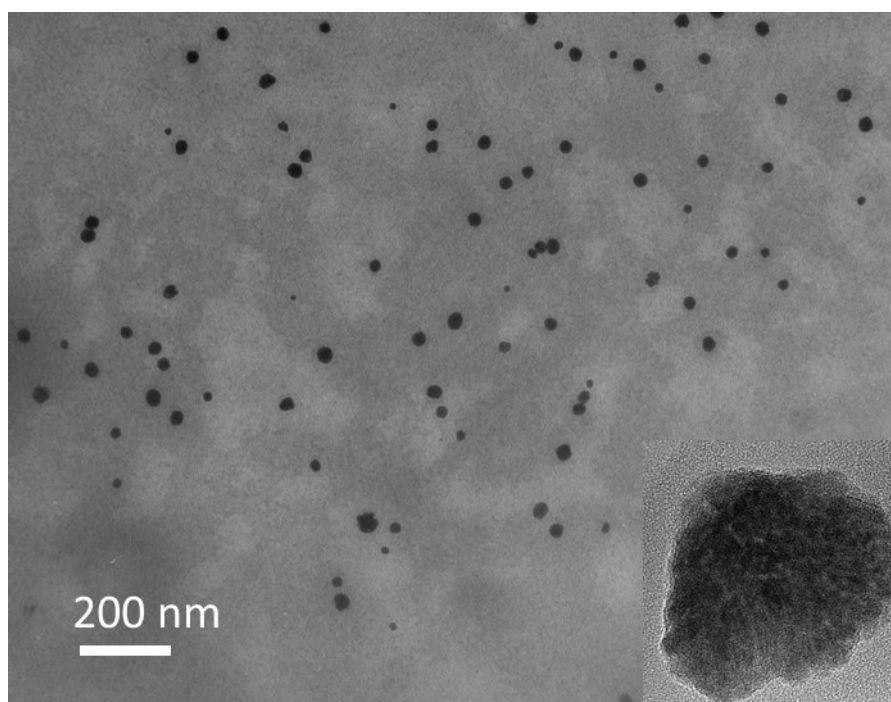


Fig. S1 TEM image of the prepared e-Pdots. Inset: image of individual e-Pdots.

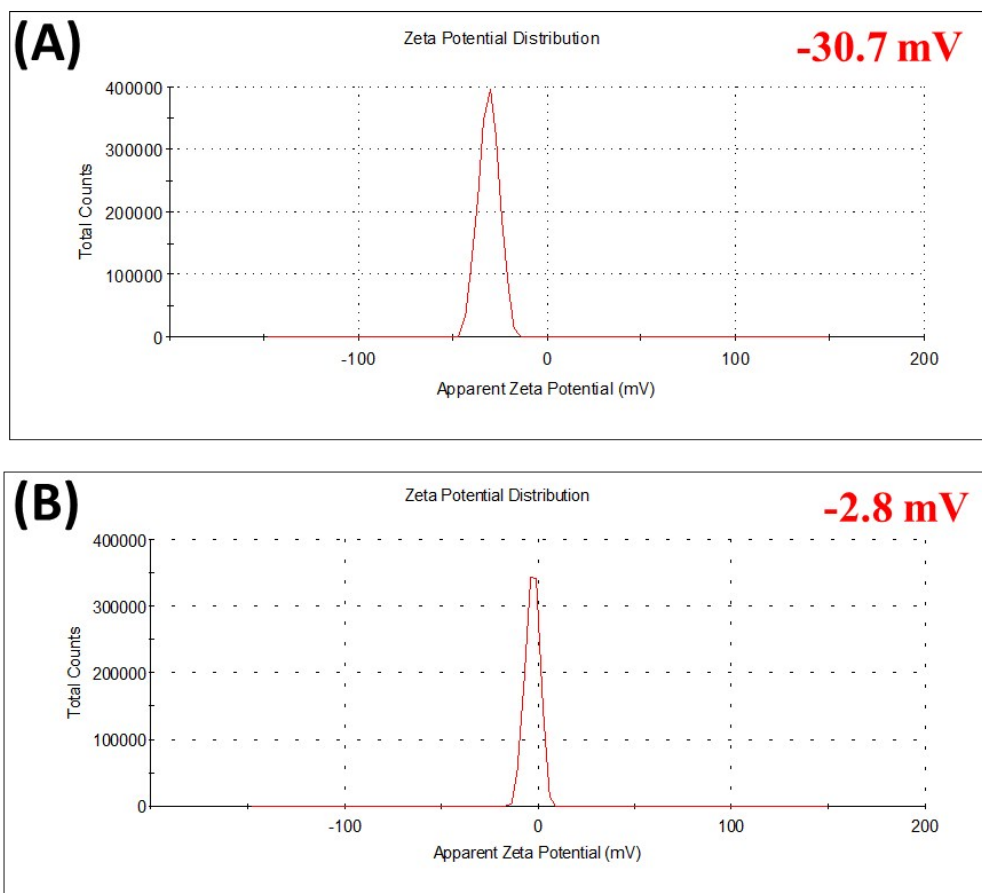


Figure S2. Zeta potentials of the e-Pdots before (A) and after (B) addition of melamine. Measurement was carried out in PBS buffer (10 mM, pH = 4.0).