

Supplementary information

In Situ Deposition of MOF199 onto Hierarchical Structure of Bamboo and Wood and Their Antibacterial Properties

Minglei Su,^a Rong Zhang,^{a*} Huairui Li,^a Xiaobei Jin,^a Jingpeng Li,^b Xianfeng Yue,^a Daochun Qin^a

^a International Centre for Bamboo and Rattan, Beijing 100102, PR China

^b China National Bamboo Research Centre, Hangzhou 310012, PR China.

Fig.S1 XRD spectra of “6-13°” of (a)Bamboo@MOF2 and bamboo, (b) Wood@MOF2 and Wood.

Fig.S2 EDS spectra of original (a) Bamboo and (b) Wood.

Fig.S3 Photographs of the antibacterial test results of the Bamboo@MOF and Wood@MOF against (a) *E. coli* and (b) *S. aureus*. The resulting bacterial growth can be observed in each plate after 24 hours incubation.

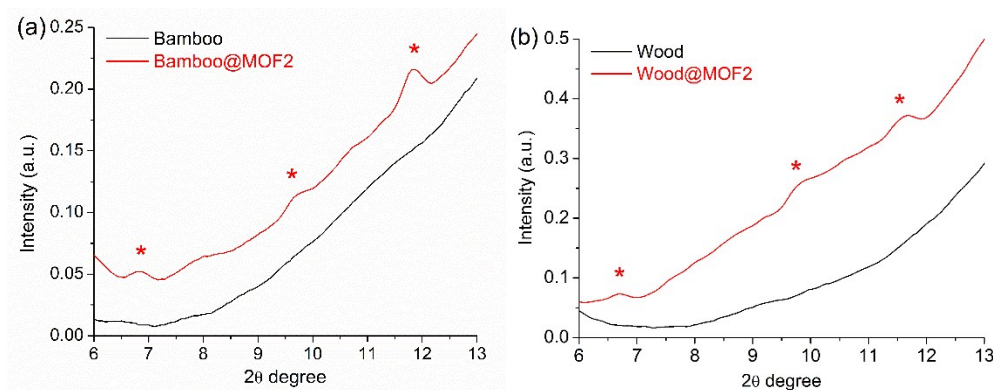


Fig.S1 XRD spectra of “6-13°” of (a)Bamboo@MOF2 and bamboo, (b) Wood@MOF2 and Wood.

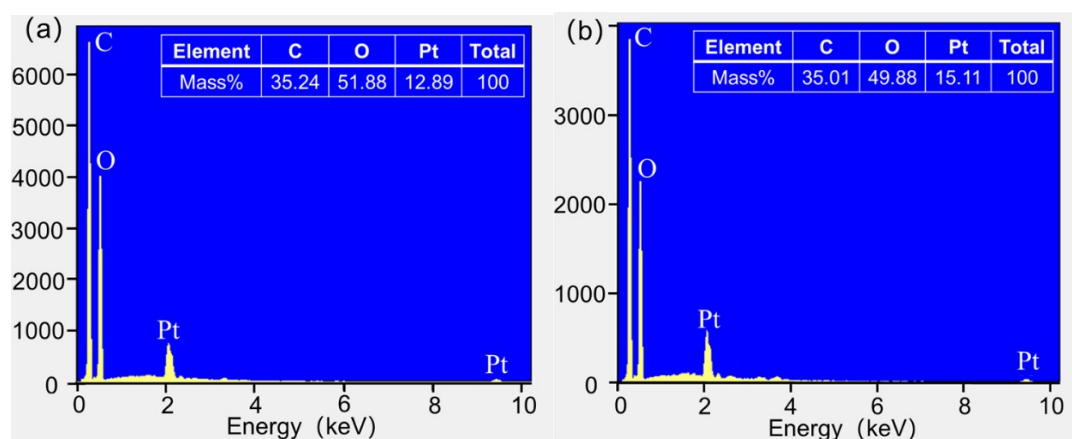


Fig.S2 EDS spectra of original (a) Bamboo and (b) Wood.

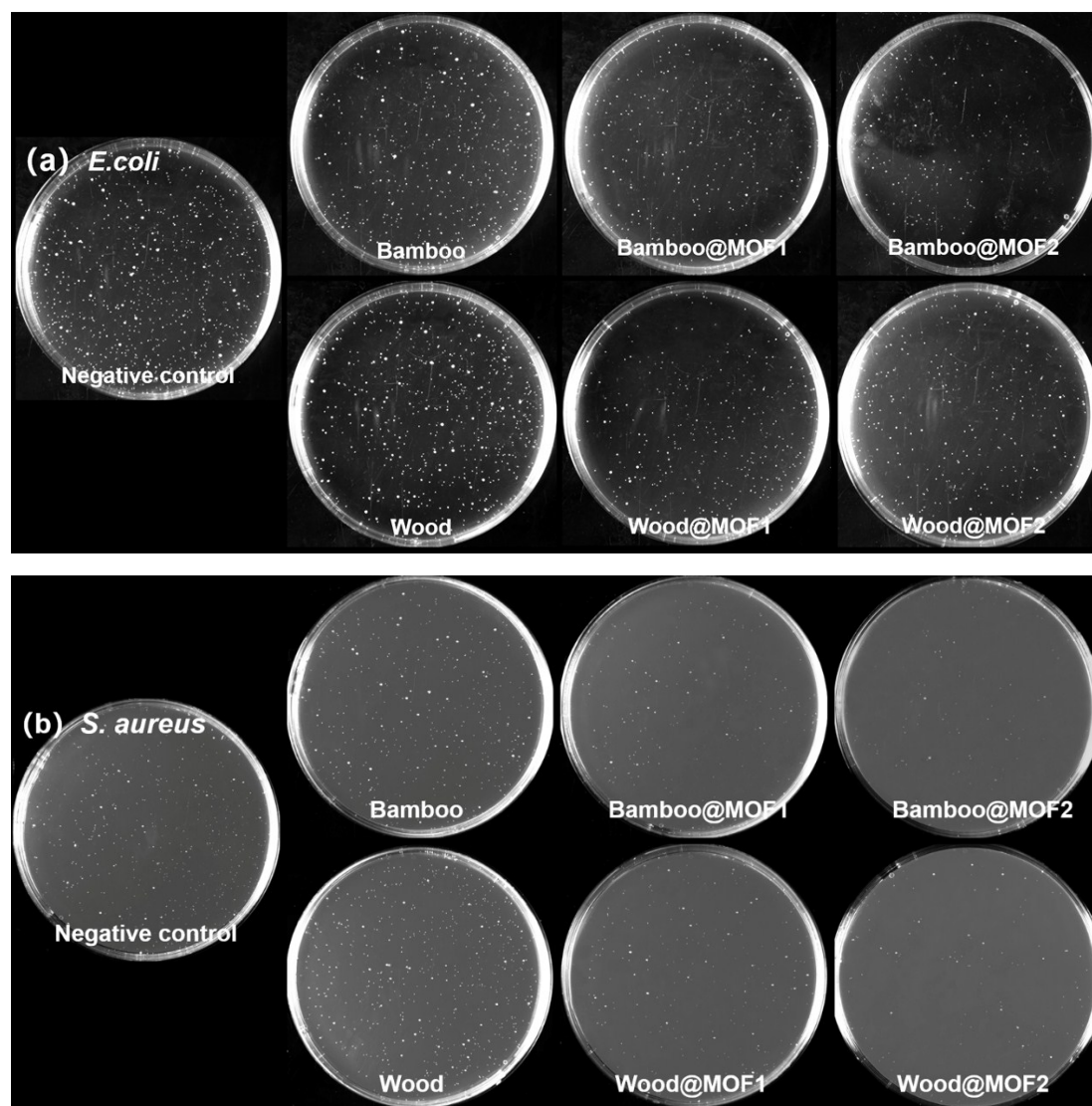


Fig.S3 Photographs of the antibacterial test results of the Bamboo@MOF and Wood@MOF against (a) *E. coli* and (b) *S. aureus*. The resulting bacterial growth can be observed in each plate after 24 hours incubation.