

Supporting Information

Fe²⁺ doped in CsPbCl₃ perovskite nanocrystals: impact on the luminescent and magnetic properties

Yue Hu^a, Xinyue Zhang^b, Chaoqun Yang^a, Ji Li^{a,b}, Li Wang^{a,b,*}

^aKey Laboratory of Functional Materials Physics and Chemistry of the Ministry of Education, Jilin Normal University, Siping 136000, China.

^bNational Demonstration Center for Experimental Physics Education, Jilin Normal University, Siping 136000, Chian

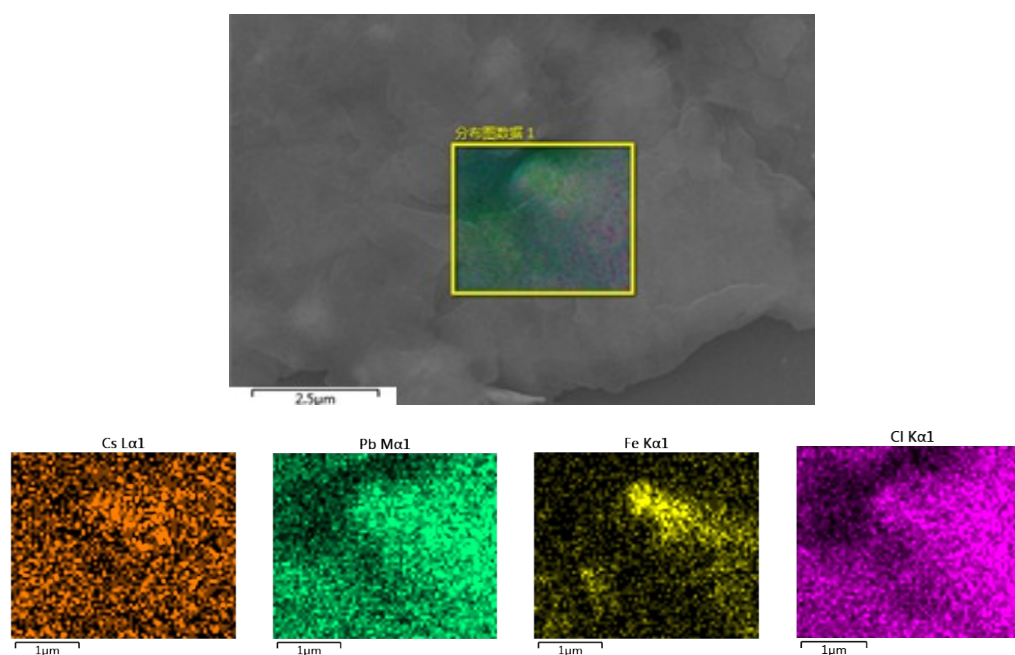


Fig. S1. FE-SEM and EDX mapping images of Fe doped CsPbCl₃ NCs with x=0.2.