

2'-Fluoro-c-di-GMP as an oral vaccine adjuvant

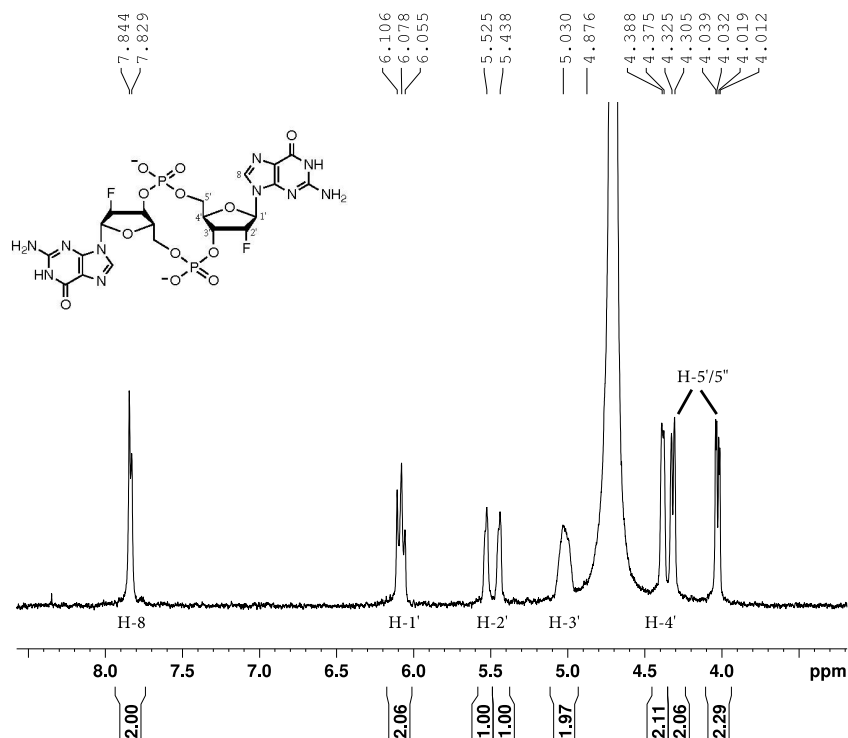
Jia Li,^a Rhonda Kuo Lee,^b Wangxue Chen,^{b,c*} Hongbin Yan^{a*}

^a*Department of Chemistry, Brock University, 1812 Sir Isaac Brock Way, St. Catharines, ON L2S 3A1, Canada Email: tyan@brocku.ca*

^b*Human Health and Therapeutics Research Center, National Research Council of Canada, 100 Sussex Dr. Ottawa, ON K1A 0R6, Canada. Email: wangxue.chen@nrc-cnrc.gc.ca*

^c*Department of Biological Sciences, Brock University, 1812 Sir Isaac Brock Way, St. Catharines, ON L2S 3A1, Canada.*

(a)



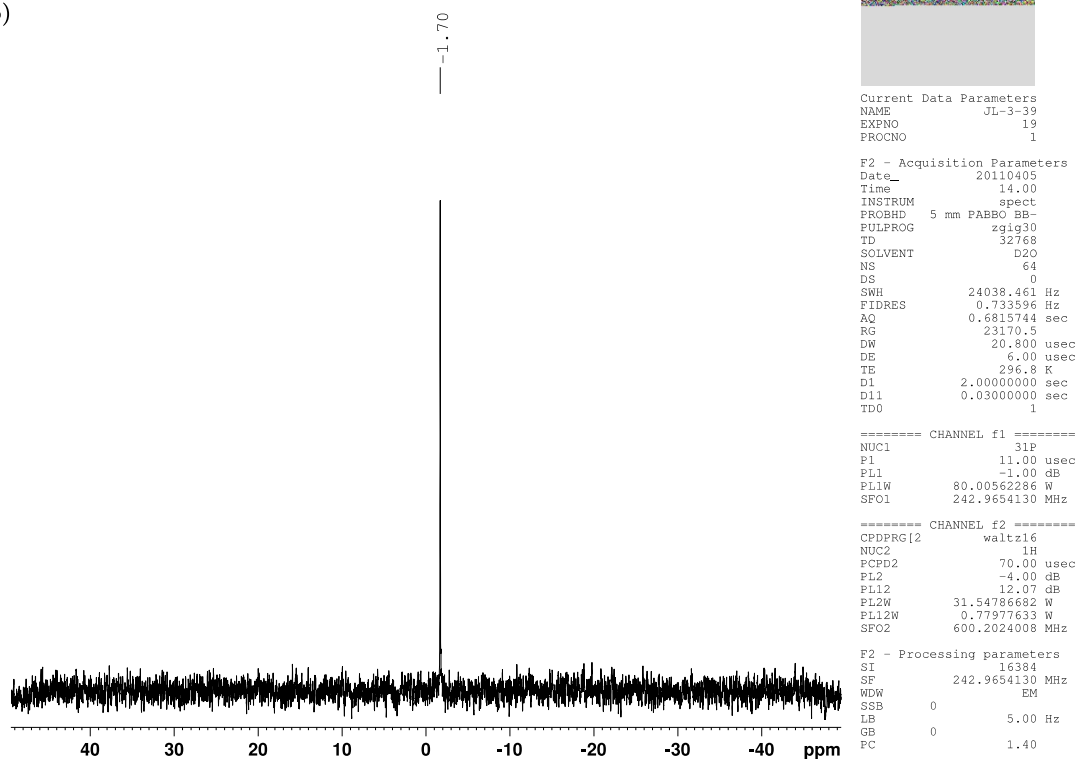
Current Data Parameters
NAME JL-3-39
EXPNO 18
PROCNO 1

F2 - Acquisition Parameters
Date_ 20110405
Time 13.56
INSTRUM spect
PROBHD 5 mm PABBO BB-
PULPROG zg30
TD 32768
SOLVENT D2O
NS 16
DS 0
SWH 12376.237 Hz
FIDRES 0.377693 Hz
AQ 1.3238271 sec
RG 256
DW 40.400 usec
DE 6.00 usec
TE 296.7 K
D1 1.00000000 sec
TD0 1

----- CHANNEL f1 -----
NUC1 1H
P1 11.00 usec
PL1 -4.00 dB
PL1W 31.54786682 W
SF01 600.2037065 MHz

F2 - Processing parameters
SI 32768
SF 600.2000000 MHz
WDW EM
SSB 0
LB 1.00 Hz
GB 0
PC 1.00

(b)



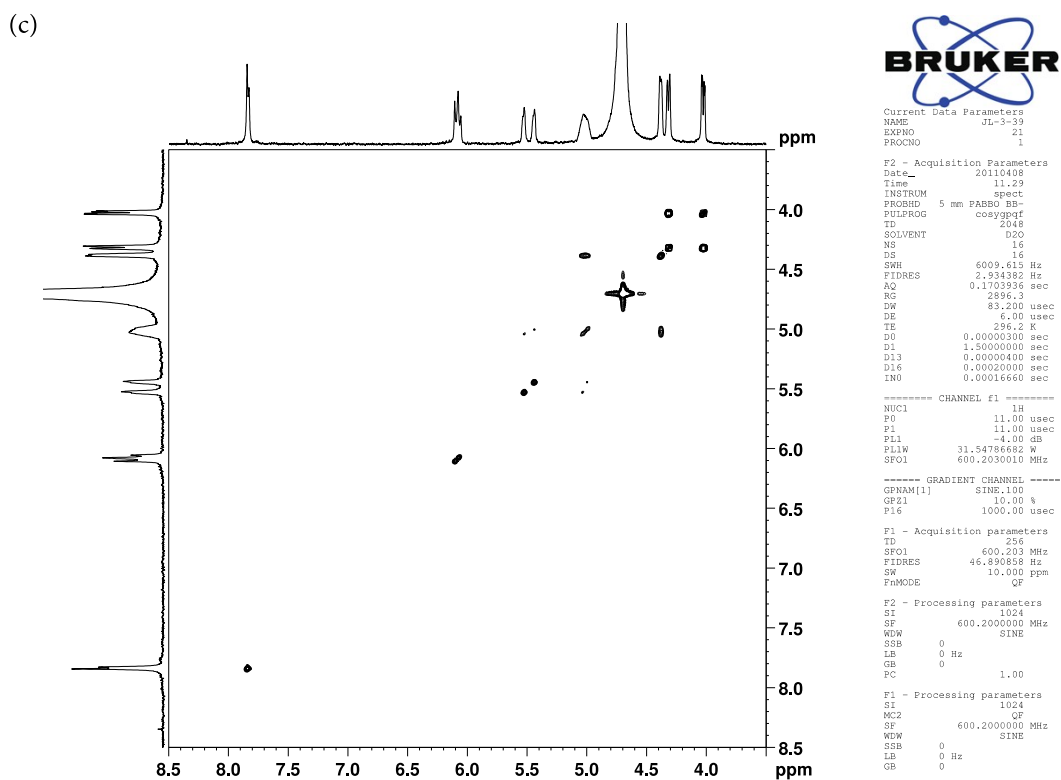


Figure S1. NMR spectra of the fully-deprotected 2'-F-c-di-GMP in D₂O. a) ¹H NMR, b) ³¹P and c) COSY.

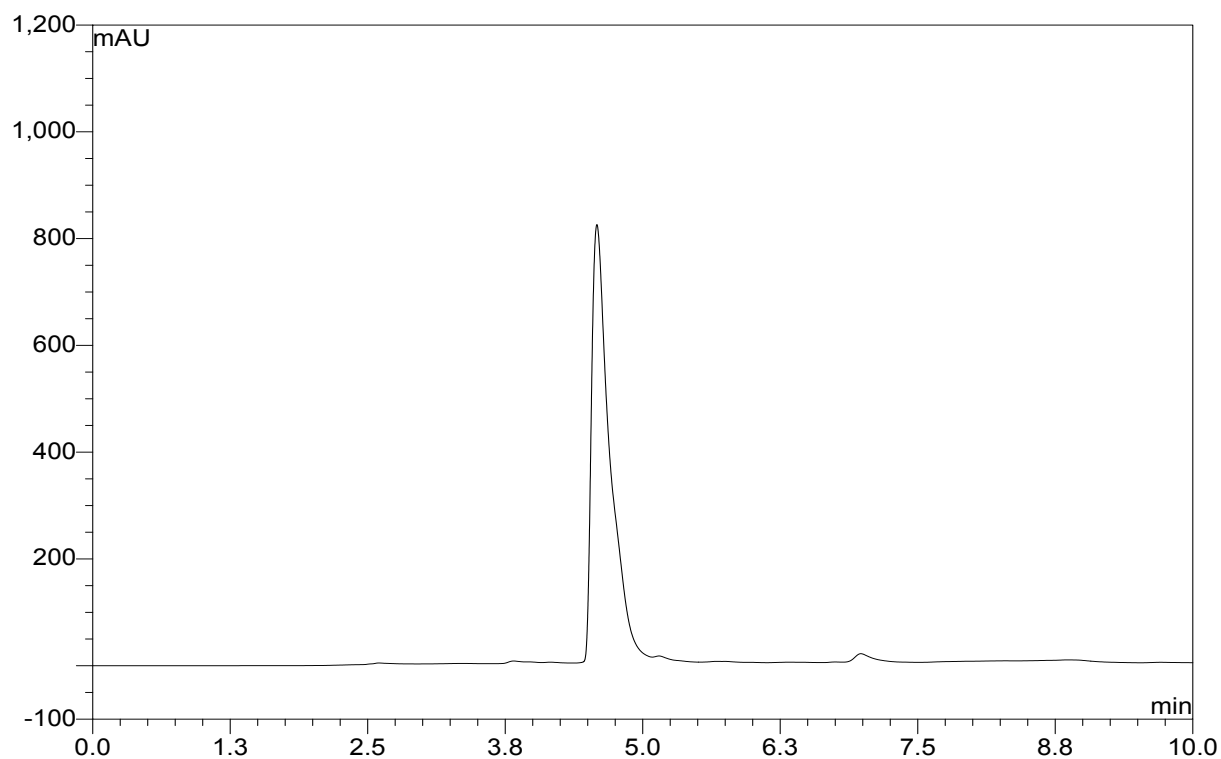


Figure S2. HPLC profile of the fully deblocked 2'-F-c-di-GMP. The column (Clarity 3 μ m oligo reverse phase, 4.6 \times 50 mm) was eluted with a linear gradient of acetonitrile – triethylammonium acetate (20 mM, pH 7.00) (0:100 to 15:85, v.v, over 10 min at 0.7 ml/min).

Brock MS Facility - Bruker HCT Ultra - LCMS

Analysis Info

Analysis Name D:\Data\Tims\JL040811b.d
Method TJinfNeg.m
Sample Name JL3-39
Comment JL/TY/JL3-39/692
Infusion in MeOH/H2O/TEA(5 additions)

Acquisition Date 08/04/2011 11:17:42 AM

Operator Tim Jones
Instrument HCTultra

Acquisition Parameters

Ion Source Type	ESI	Ion Polarity	Negative	Alternating Ion Polarity	off
Mass Range Mode	Std/Enhanced	Scan Begin	50 m/z	Scan End	1500 m/z
Capillary Exit	-143.5 Volt	Skimmer	-40.0 Volt	Trap Drive	78.2
Accumulation Time	8487 μ s	Averages	5 Spectra	Auto MS/MS	off

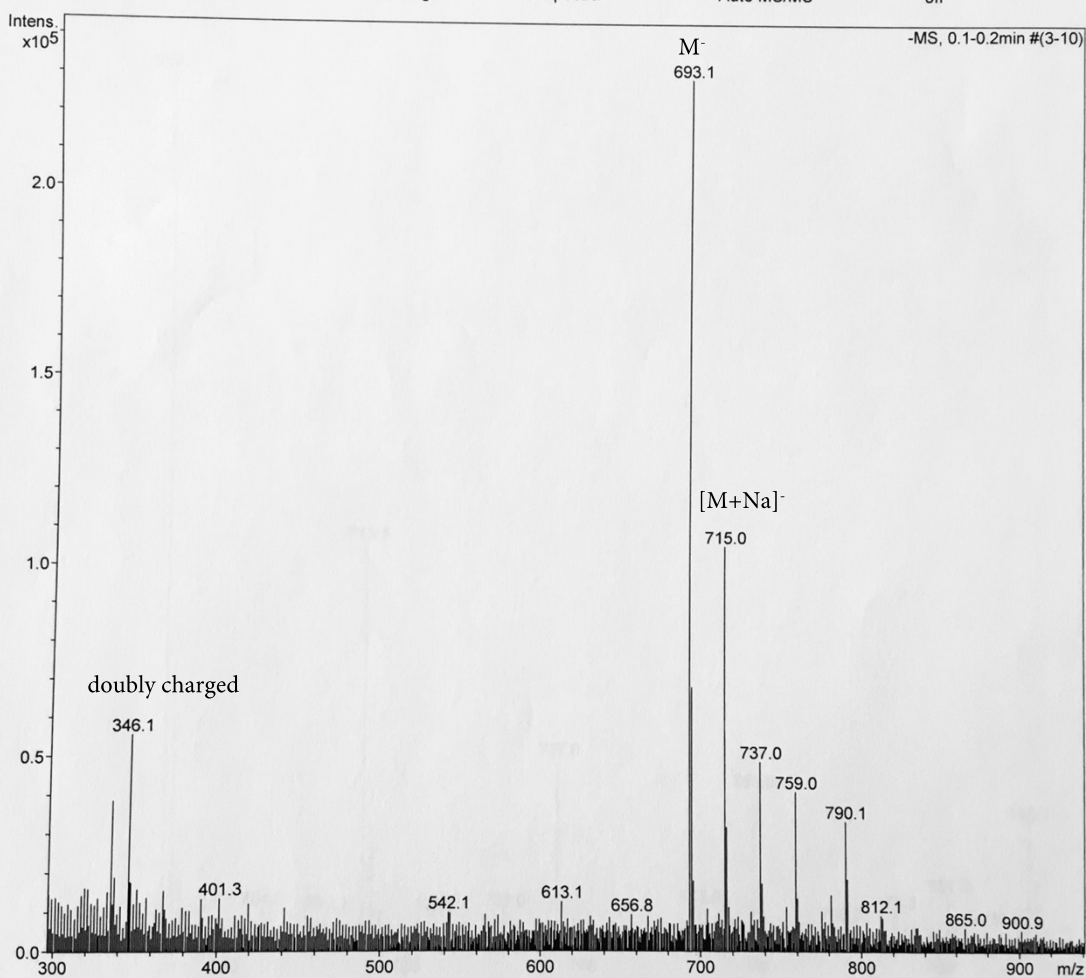


Figure S3. Mass spectrum of 2'-F-cdi-GMP under ESI negative mode.