

Supplementary information

**Switch on fluorescence mode for determination of L-cysteine with
carbon quantum dots and Au nanoparticles as a probe**

Yuye Chen ^a, Xiu Qin ^a, Chunling Yuan ^a, Yilin Wang ^{a, b *}

^a *School of Chemistry and Chemical Engineering, Guangxi University, Guangxi Key Laboratory of Biorefinery, Nanning 530004, PR China*

^b *Guangxi Key Laboratory for Agro-Environment and Agro-Product Safety, Nanning 530004, PR China*

*Corresponding author, Tel: +86 771 3392879

E-mail address: theanalyst@163.com; theanalyst@gxu.edu.cn

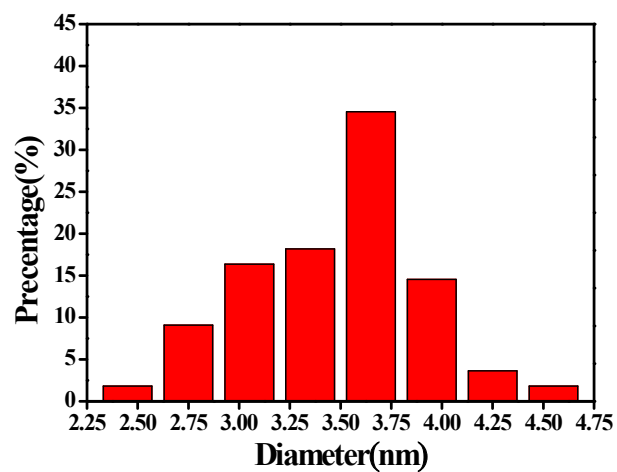


Fig.S1 The size distribution of CQDs

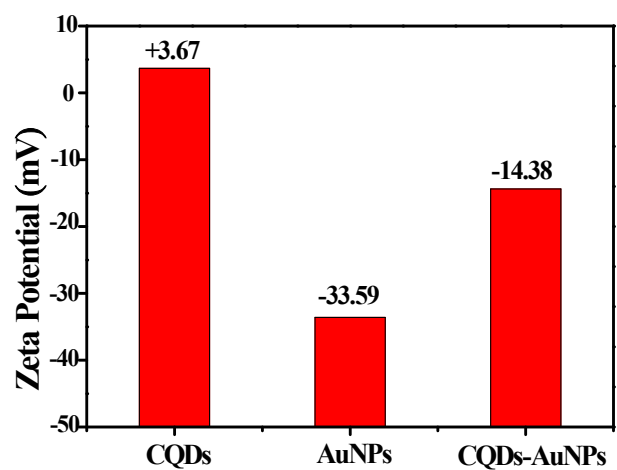


Fig.S2 The zeta potential of CQDs , Au NPs and CQDs-AuNPs.

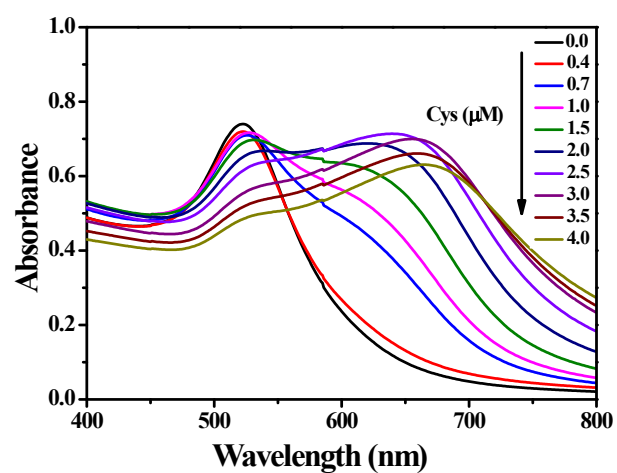


Fig.S3 The absorption spectra of AuNPs in the presence of cysteine at various concentrations.

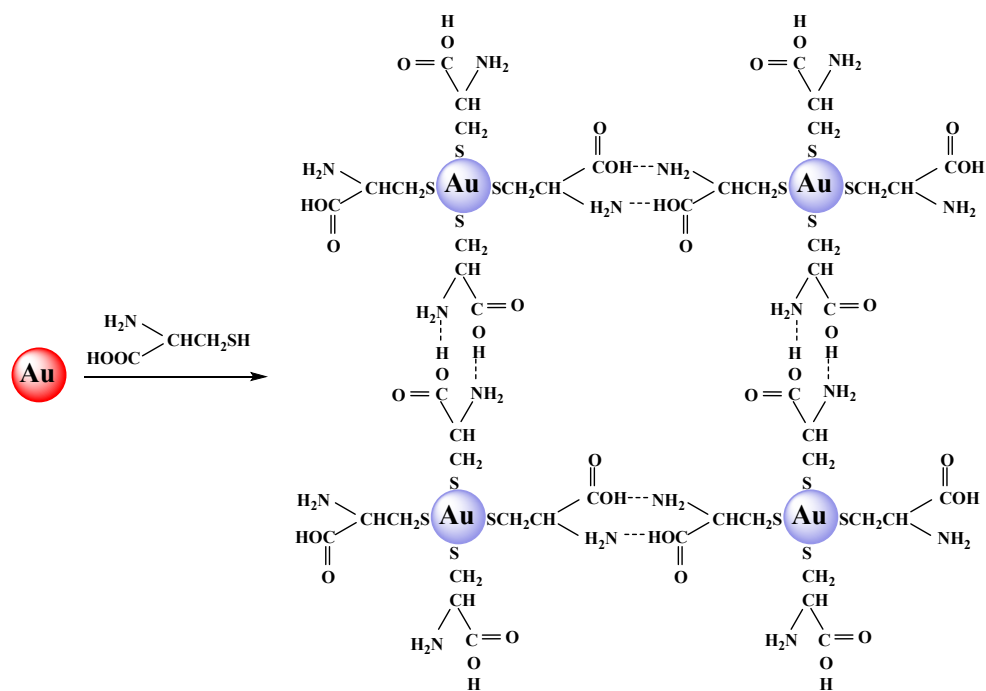


Fig.S4 The schematic illustration of the aggregation of AuNPs in the presence of cysteine.

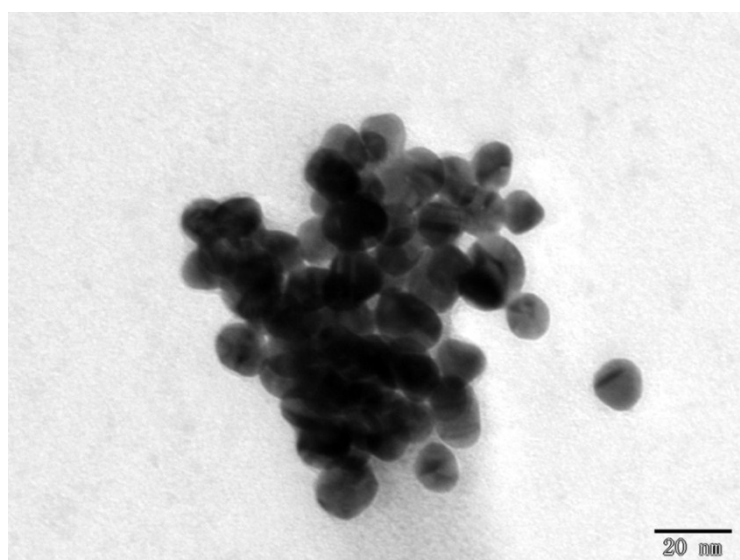


Fig.S5 TEM image of AuNPs in the presence of cysteine.

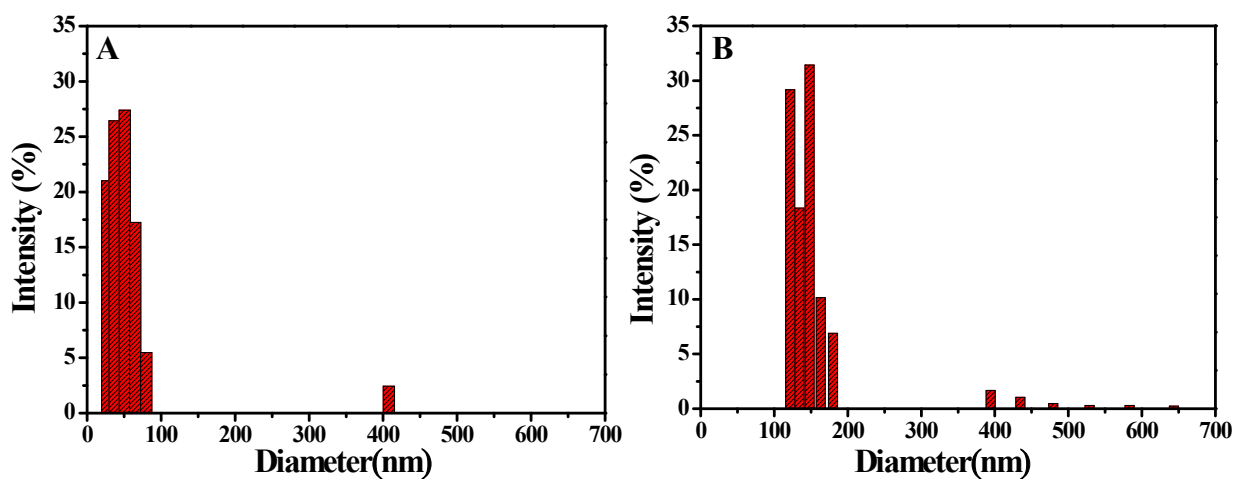


Fig.S6 DLS measurements of CQDs-AuNPs solutions before (A) and after (B) adding Cys.

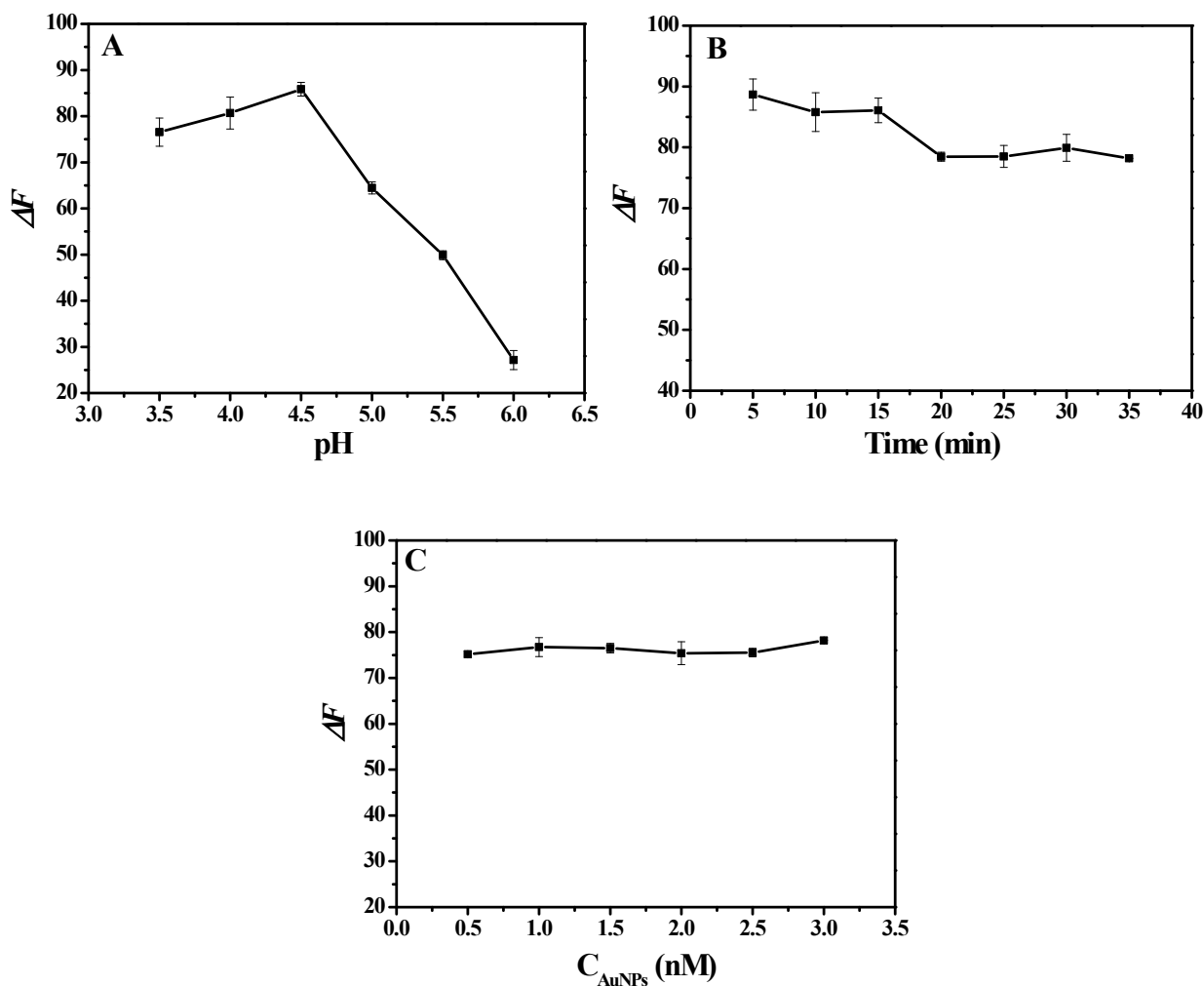


Fig. S7. The effect of (A) pH value (in BR buffer) , (B) incubation time and (C) the concentration of AuNPs on the fluorescence recovery. The concentration of Cys was 2.0 μ M.