

Standard curve of standard sample:

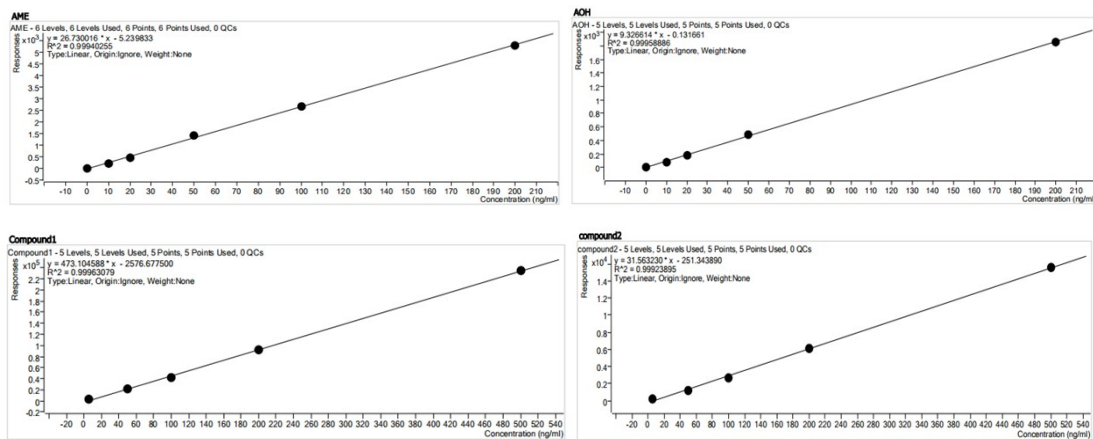
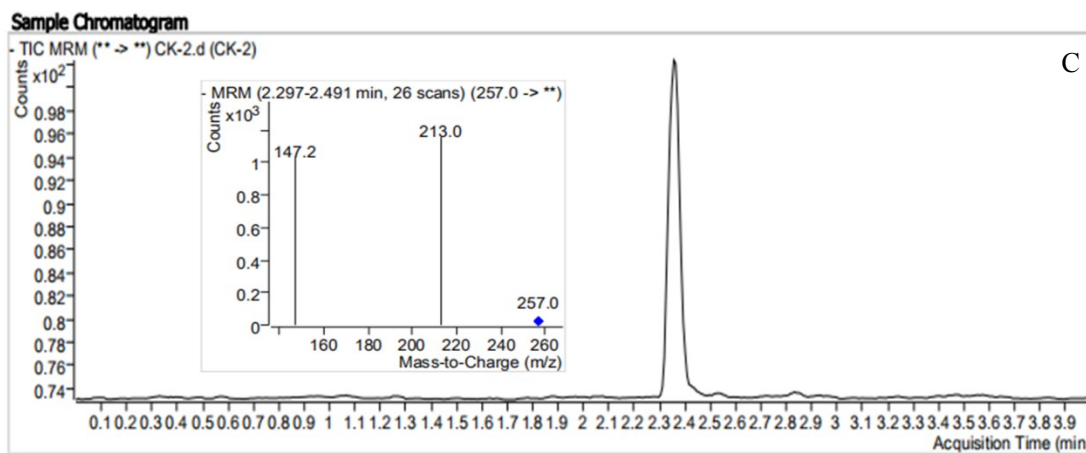
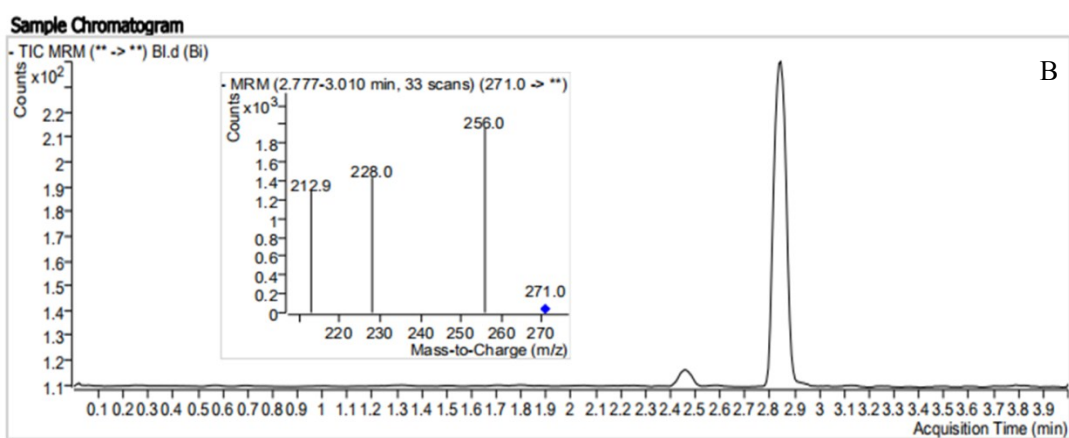
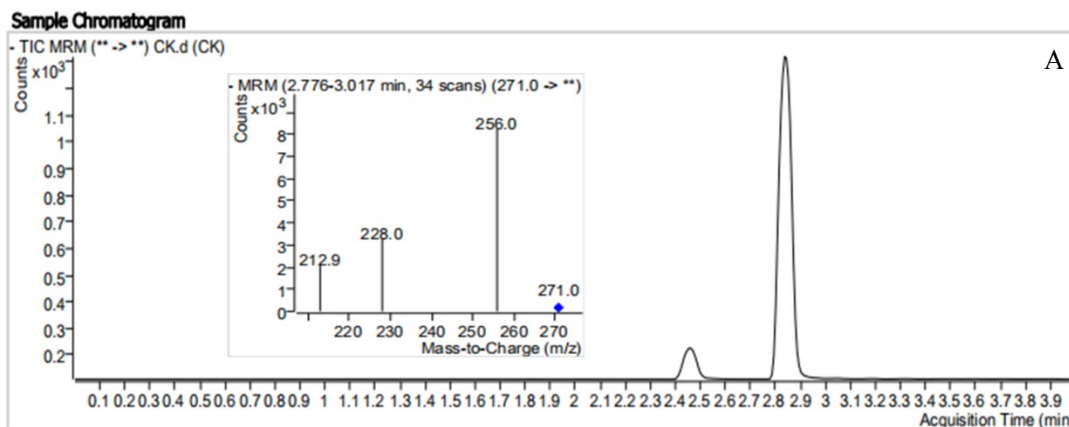


Fig. S1 Standard curve for standard samples of AME, AOH, ALT and TEN toxin

HPLC/MS chromatograms and mass spectra



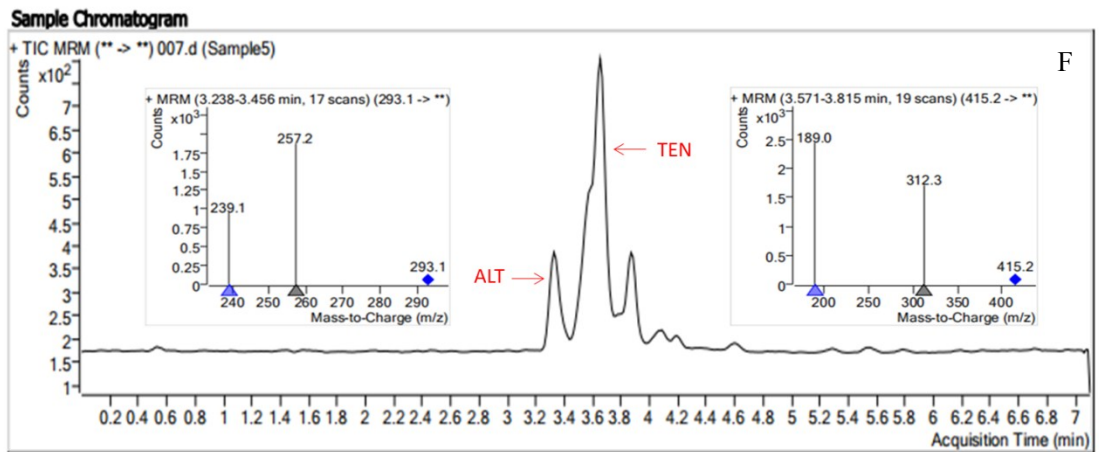
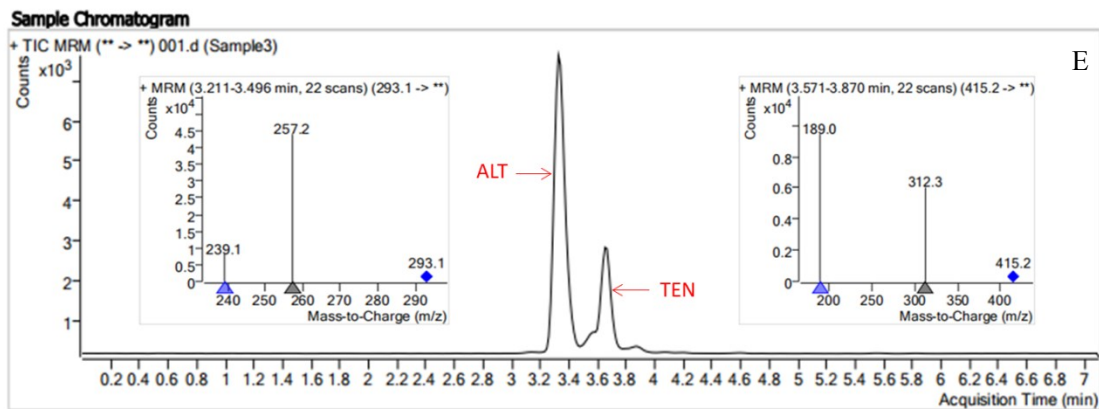
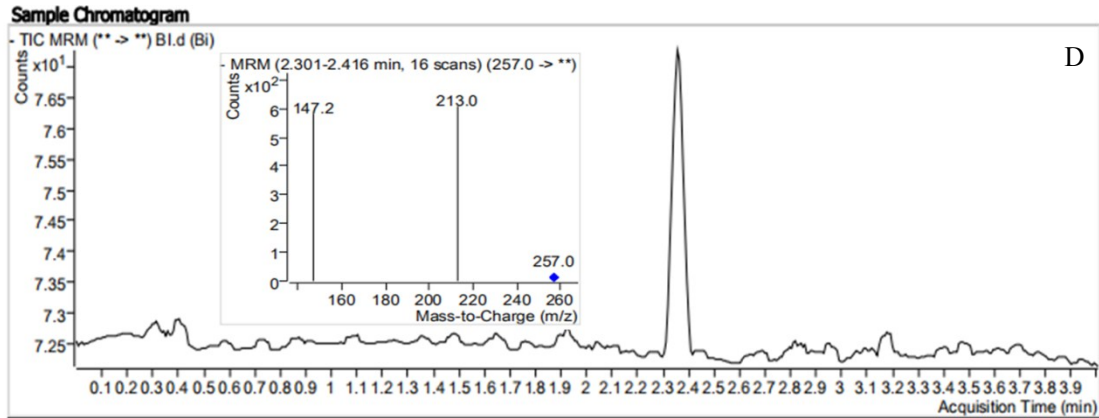


Fig. S2 HPLC/MS chromatograms and Mass spectra for AME (A, B) and AOH (C, D) in *A. alternata* treated with 0 and 0.312 mM BITC. (E) is HPLC/MS chromatograms and Mass spectra for AME and TEN in *A. alternata* treated with 0 mM BITC. (F) is HPLC/MS chromatograms and Mass spectra for AME and TEN in *A. alternata* treated with 0.312 mM BITC.