

Supporting Information

Synthesis and the Model Simulation of Hexagonal to Circular Varying Perovskite Cesium Lead Halide Nanosheets by Rapidly Changing

Temperature

Zhong-Hai Lin,^{*a} Fei Gao,^a Hong Chen,^a Jia-Yi Lei,^a Zhi Yang,^b Jun-Wei Cai,^a Ping-Jian Wang^a
and Ming-Qiang Wang^b

^aKey Laboratory of Intelligent Information Processing in Universities of Shandong, Shandong Business and
Technology University, Yantai 264005, China. E-mail: zhlin@sdtbu.edu.cn

^bElectronic Materials Research Laboratory (EMRL), Key Laboratory of Education Ministry; International Center for
Dielectric Research (ICDR), Xi'an Jiaotong University, Xi'an 710049, China.

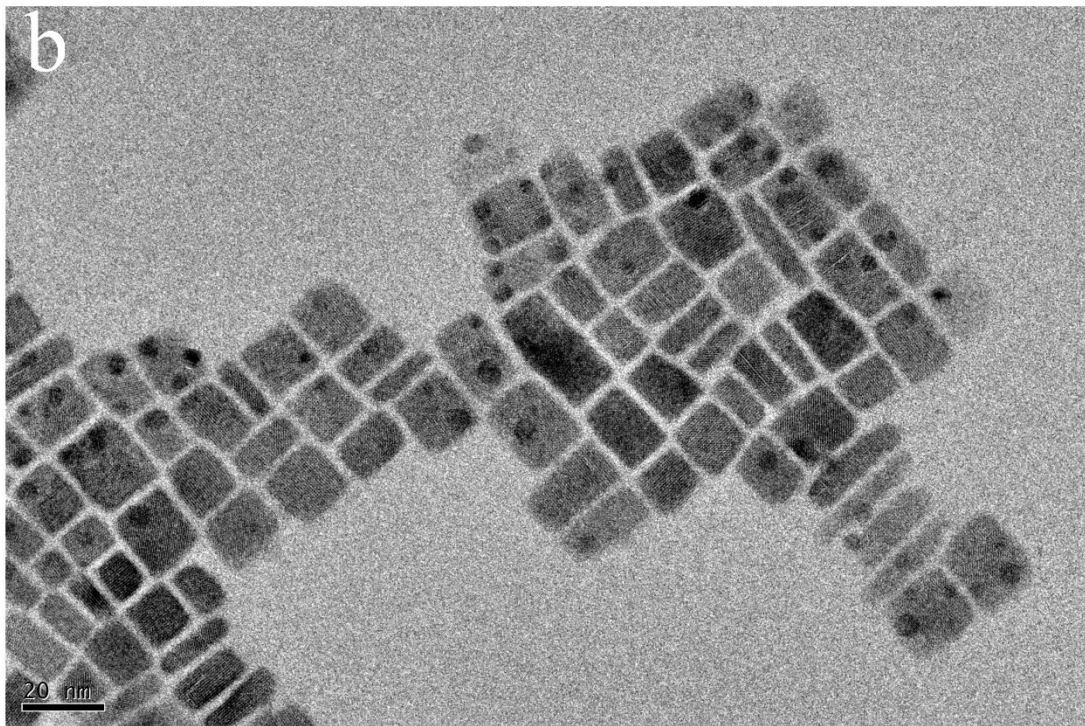
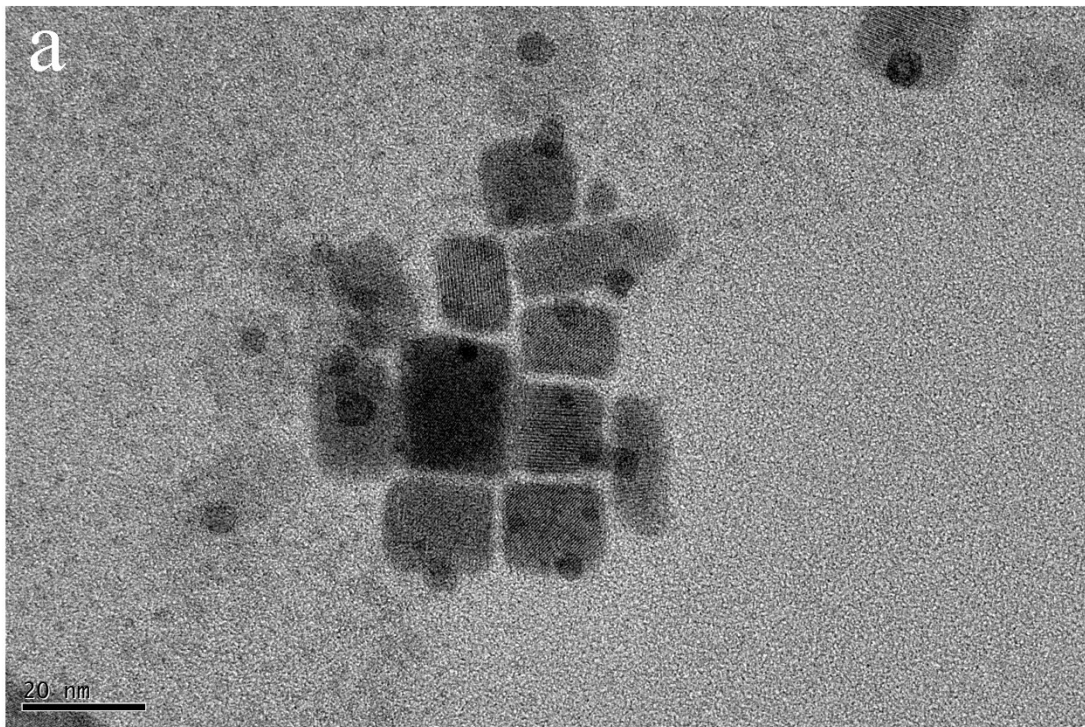


Fig. S1 (a, b) TEM images of the rectangular-like CsPbBr₃ perovskite nanoplates at 150°C.

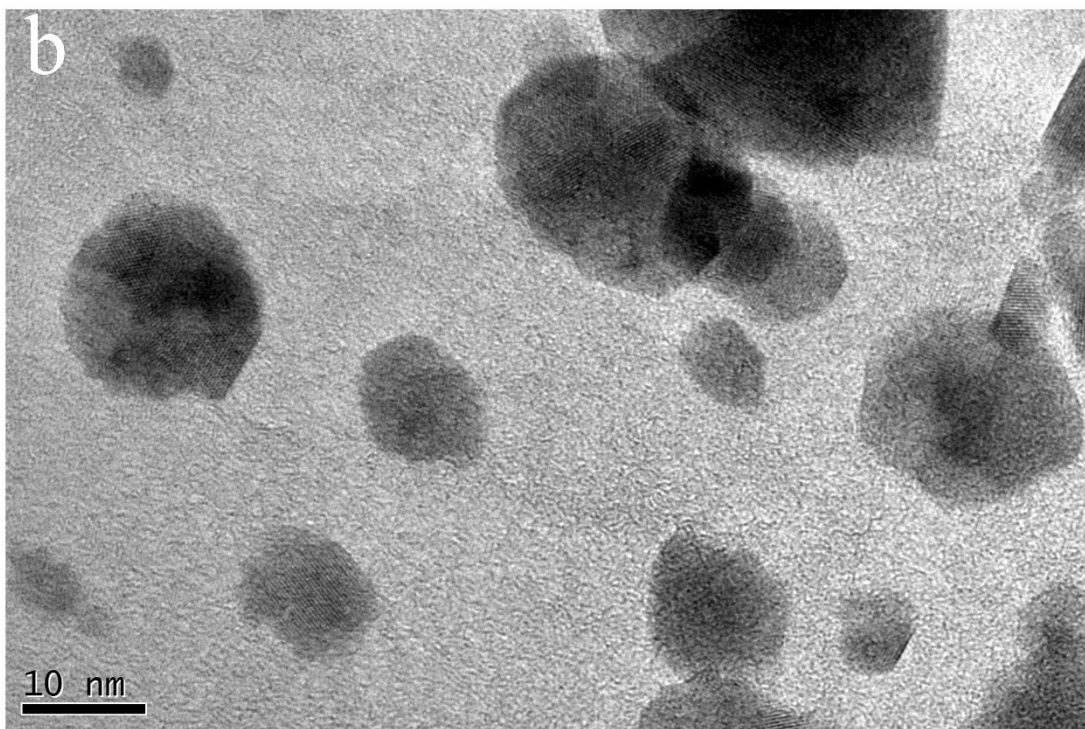
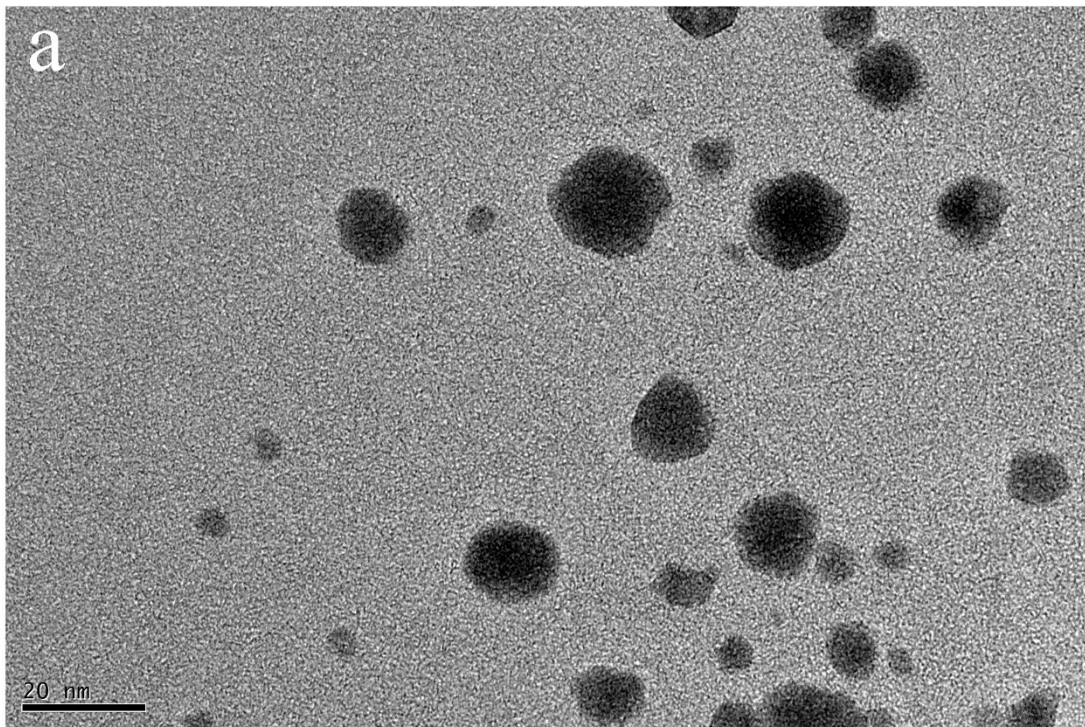


Fig. S2 (a, b) TEM images of the disorganized CsPbBr₃ perovskite nanoplates at 60°C.