

Figure S1. Schematic illustration of experimental setups for (a) detection of ozone gas produced during water electrolysis and (b) water treatment test using MB.

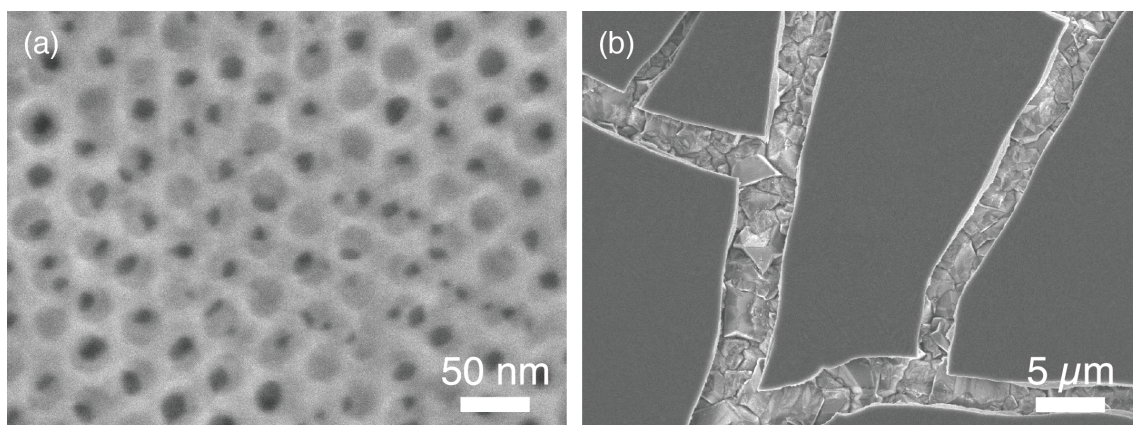


Figure S2. (a) Top view and (b) low-magnification SEM images of hybrid electrode.

This figure has been reproduced from N. Suzuki *et al.*⁸ in accordance with the Creative Commons Attribution (CC BY) license.