

Rose odorata Sweet var. gigantea (Coll.et Hemsl.) Rehd. Et Wils extract attenuates DSS-induced ulcerative colitis by activating Nrf2/NF-κB pathway

Xinyu Li ^{a, b 1}, Rui Liu ^{a 1}, Yanmin Zhao ^{a, b}, Naying Gao ^{b, c}, Xin Jin ^b, Xiaoxia Gao ^c, Tan Li ^{b *},
Dailin Liu ^{a, b *}

^a Tianjin University of Traditional Chinese Medicine, Tianjin 300193, China

^b Tianjin Key Laboratory for Prevention and Control of Occupational and Environmental hazard,
Logistics University of Chinese People's Armed Police Force, Tianjin 300309, P. R. China.

^c Department of Traditional Chinese Medicine, Guangdong Pharmaceutical College, 510006,
Guangdong, P. R. China

Table S1 Standard curve equation and the contents of seven compounds in ROE

Peaks	Reference Name	Standard curve equation	R ²	Content (mg/g)
1	Procyanidin B3	y = 296220x - 4964.7	0.9996	16.22
2	Epigallo catechin	y = 248534x - 5730.3	0.9999	5.60
3	Catechin	y = 475346x + 69114	0.9994	8.50
4	Epicatechin	y = 806963x + 273547	0.9996	2.35
5	(-)-fisetinidol-(4α,8)-(-)-catechin	y = 403500x + 168992	0.9995	3.22
6	(4α,8)-(-)-fisetinidol- (-)-epicatechin	y = 1,187,747x + 62,281	0.9996	4.39
7	(+)-guibourtinidol-(4β,8)-epicatechin	y = 65786x + 611304	0.9994	1.12

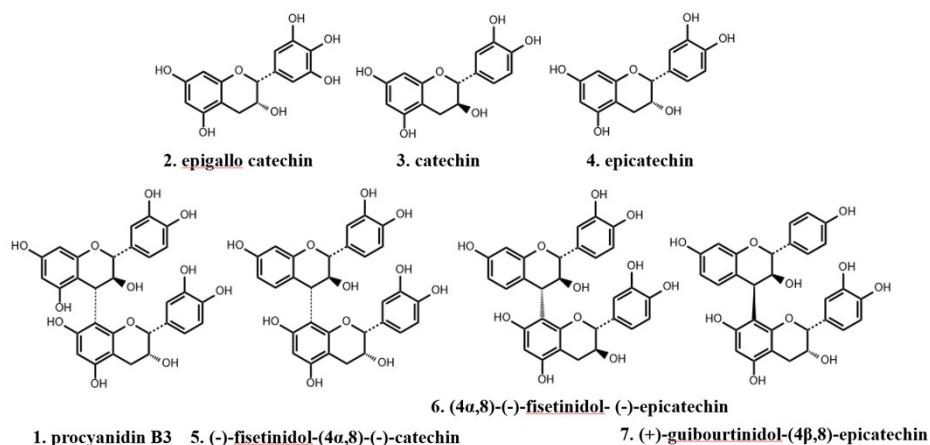


Figure S1 the structures of seven identified peaks