

Fig. S3 Photographs of native PVCL (a) and 0.25NT/PVCL (b) hydrogels.

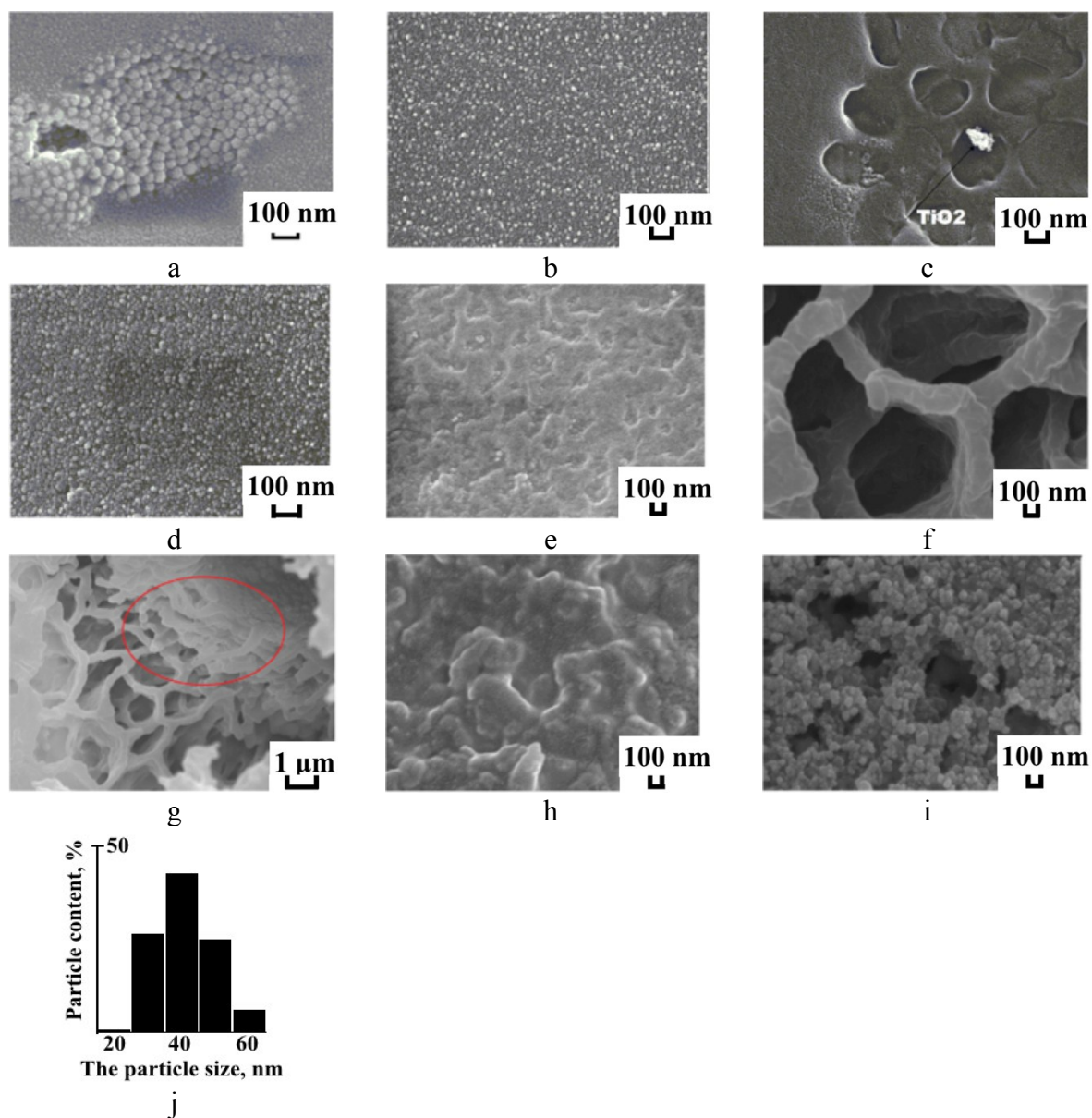


Fig. S4 SEM-images of (a) surface and (b) cross-section of air-dried PVCL hydrogel; surface (c) and (d) cross-section of air-dried 0.25NT/PVCL hydrogel; (e) surface and (f,g) cross-section of

freeze-dried PVCL hydrogel (formations not involved in formation of pore walls are marked with an oval); (h) surface and (i) cross-section of freeze-dried 0.25NT/PVCL hydrogel; (j) NT particle distribution in the cross-section of 0.25NT/PVCL hydrogel.