

Supporting information for the manuscript Escape dynamics of liquid droplets confined between soft interfaces: Non-inertial coalescence cascades

Maciej Chudak,¹ Jesse S. Kwaks,¹ Jacco H. Snoeijer,^{1,2} and Anton A. Darhuber^{1,*}

¹*Department of Applied Physics, Eindhoven University of Technology, The Netherlands*

²*Faculty of Science and Technology, University of Twente, The Netherlands*

(Dated: January 8, 2020)

I. ELASTOMER ROUGHNESS

We have measured a typical sample using atomic force microscopy (Park Scientific XE7). Representative 2D scans are presented in Fig. 1. The typical surface roughness amplitudes are in the few nanometer range.

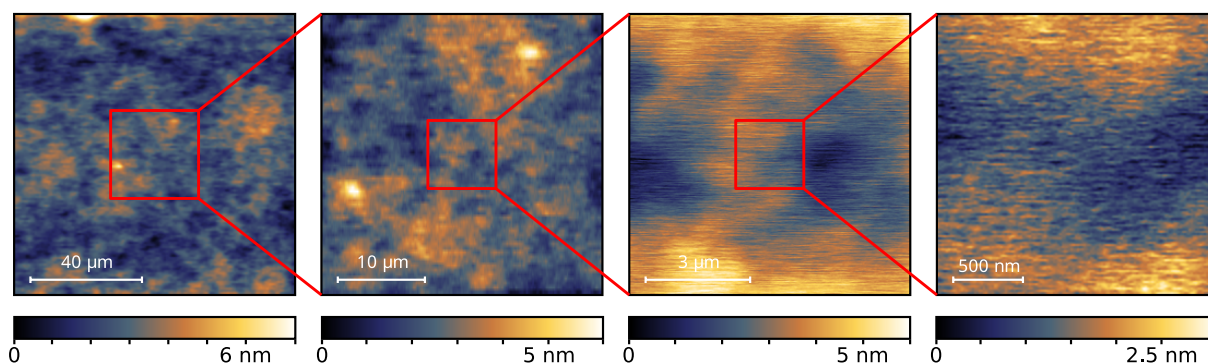


FIG. 1. Atomic force microscope images of a typical sample.

* a.a.darhuber@tue.nl