

Supporting information

Thermoelectric $(\text{Bi,Sb})_2\text{Te}_3$ - $\text{Ge}_{0.5}\text{Mn}_{0.5}\text{Te}$ composites with excellent mechanical properties

Sichen Duan^{a,b}, Na Man^{b,c}, Jingtao Xu^{*,b,c}, Qingsong Wu^d, Guo-qiang Liu^{b,c}, Xiaojian Tan^{b,c},

Hezhu Shao^{b,c}, Kai Guo^a, Xinxin Yang^{*,a}, and Jun Jiang^{*,b,c}

^a School of Materials Science and Engineering, Shanghai University, Shanghai 200444, China

^b Ningbo Institute of Materials Technology and Engineering, Chinese Academy of Sciences, Ningbo 315201, China

^c Center of Materials Science and Optoelectronics Engineering, University of the Chinese Academy of Sciences, Beijing 100039, China

^d Laboratory of advanced materials, Fudan University, Shanghai 200438, China

*Corresponding author E-mail address: xujingtao@nimte.ac.cn (Jingtao Xu), yangxinxin@shu.edu.cn (Xinxin Yang), jjun@nimte.ac.cn (Jun Jiang).

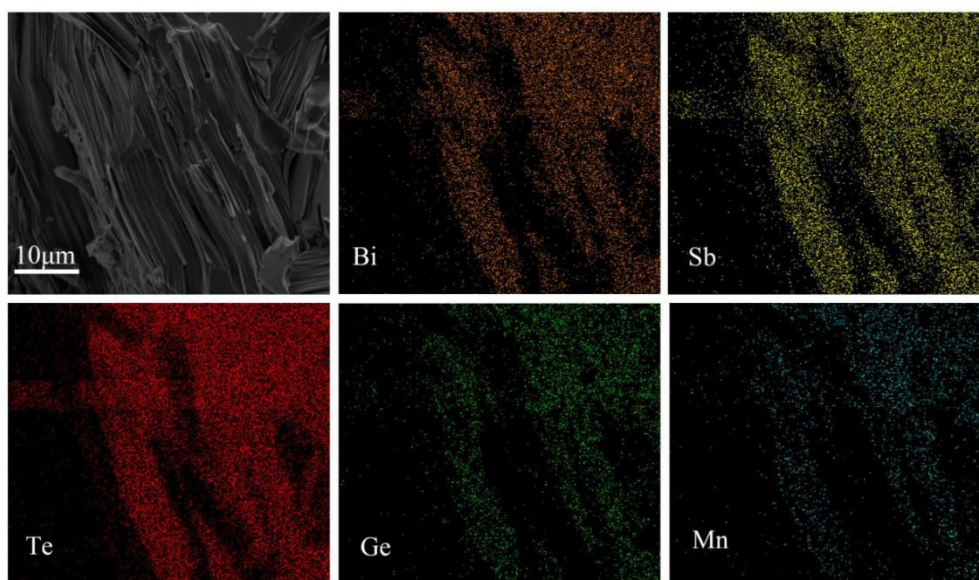


Fig. S1 SEM image and corresponding EDS mappings for $(\text{Bi,Sb})_2\text{Te}_3$ - $\text{Ge}_{0.5}\text{Mn}_{0.5}\text{Te}$