

Supporting information

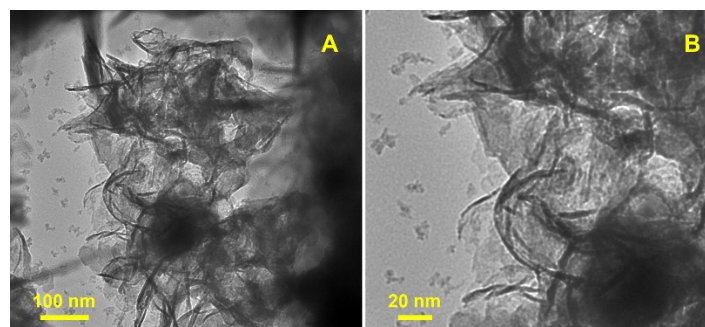


Figure. S1. (A, B) Different magnified TEM images of CoSe₂.

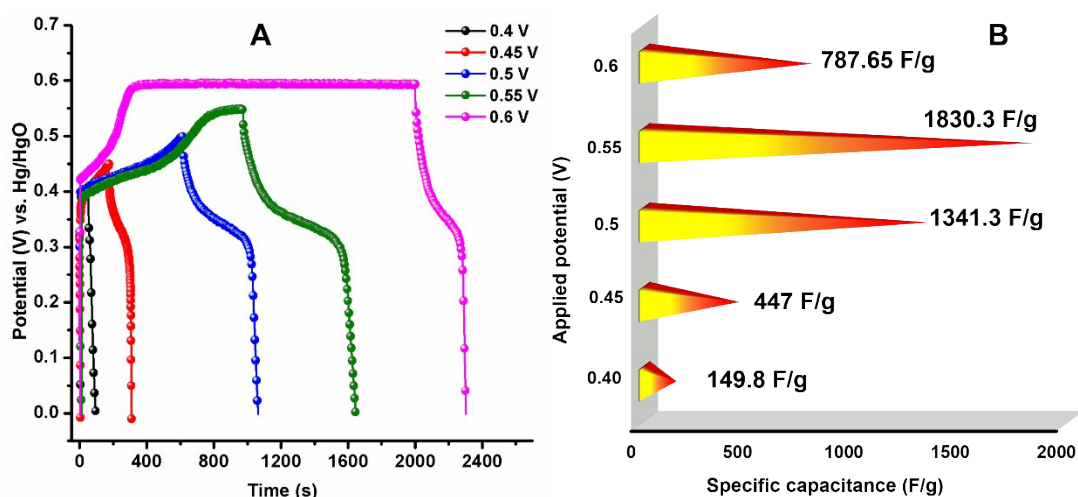


Figure. S2. (A) GCD curve of V-CoSe₂/NF for different potential window (B) bar diagram for the specific capacitance vs. different applied potential.

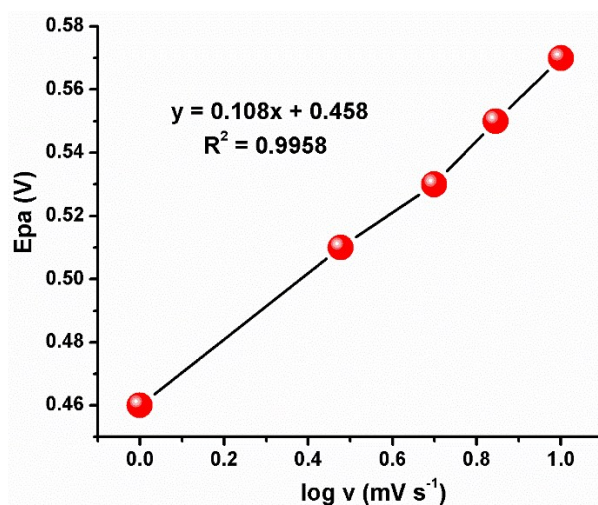


Figure. S3. Linear calibration plot for E_{pa} vs. logarithm of scan rate

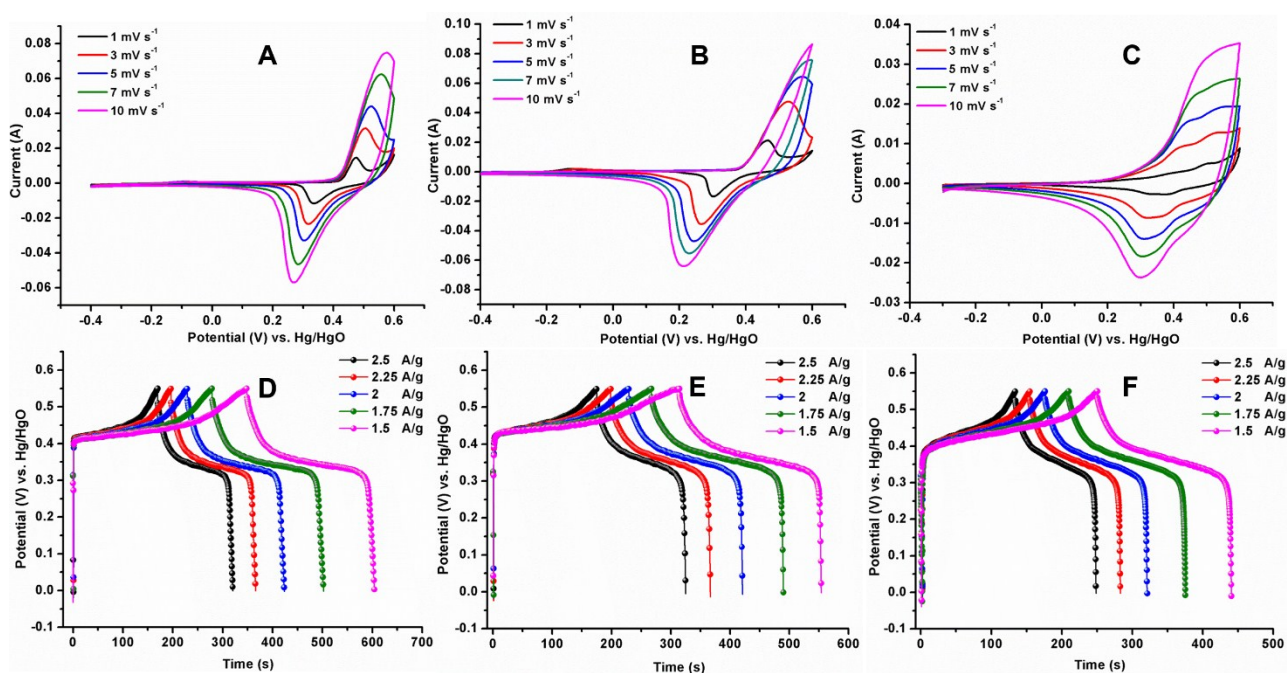


Figure. S4. CV curves of (A) Zn-CoSe₂/NF (B) Mn-CoSe₂/NF (C) Cu-CoSe₂/NF for varying the scan rate and GCD curves of (D) Zn-CoSe₂/NF (E) Mn-CoSe₂/NF (F) Cu-CoSe₂/NF for different current densities.

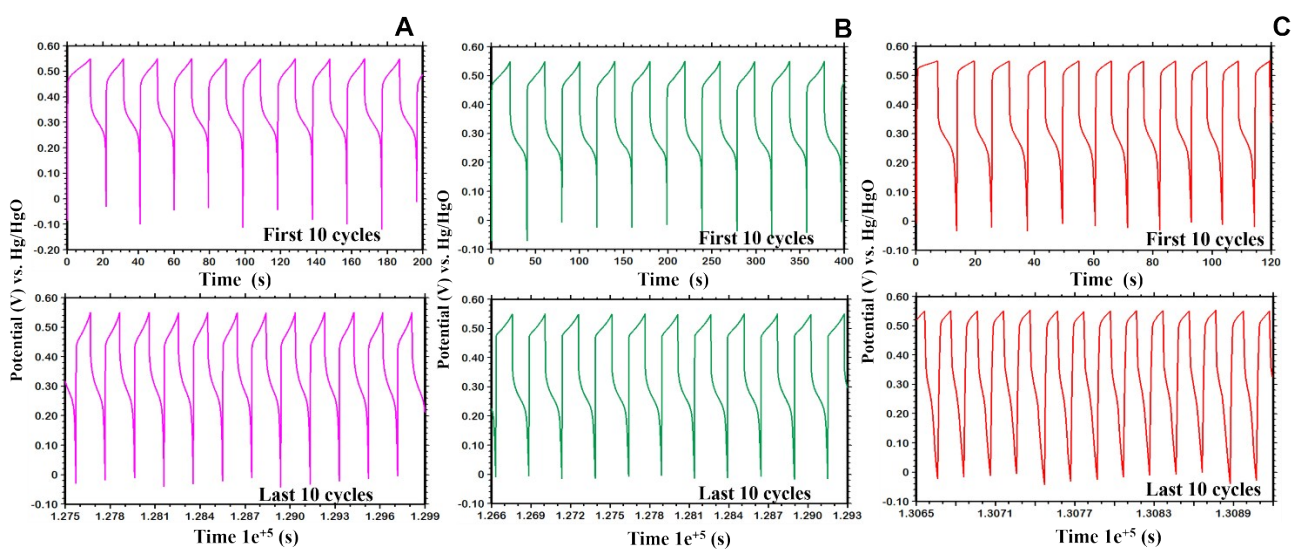


Figure. S5. GCD curve of (A) Zn-CoSe₂/NF (B) Mn-CoSe₂/NF (C) Cu-CoSe₂/NF for the first/last 10 cycles from 5000 cycles.