

Hexagonal Plate Lithiophilic NiO sheets on a Ni Collector for Stable Lithium Metal Anodes

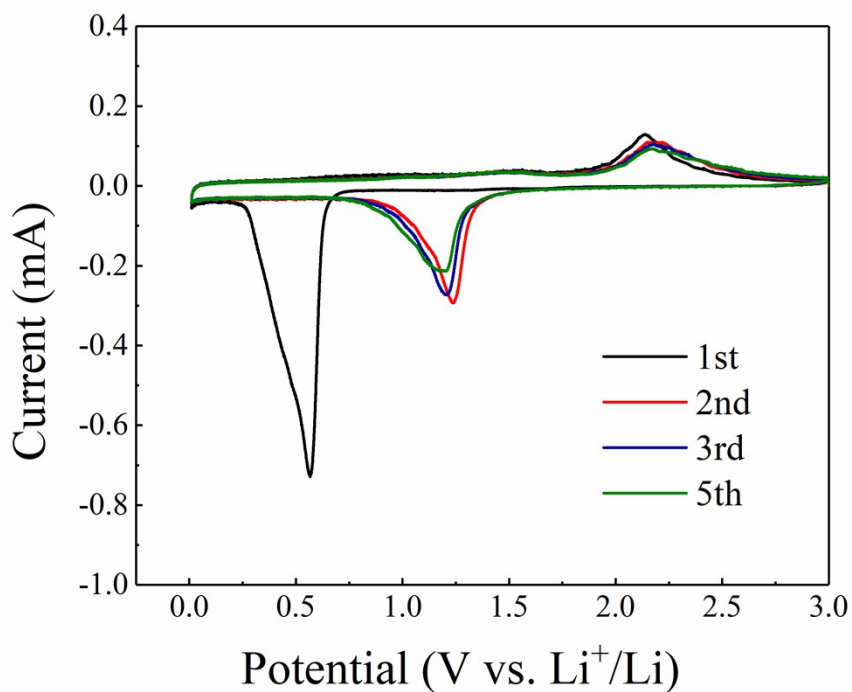
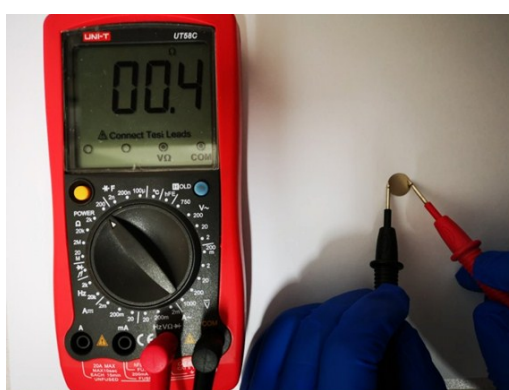


Figure S1. Cyclic voltammogram of HP-NiO-Ni electrode tested at a scan rate of 0.1mV/s.



Barely Ni



HP-NiO-Ni

Figure S2. Resistance measured for barely Ni and HP-NiO-Ni substrate.

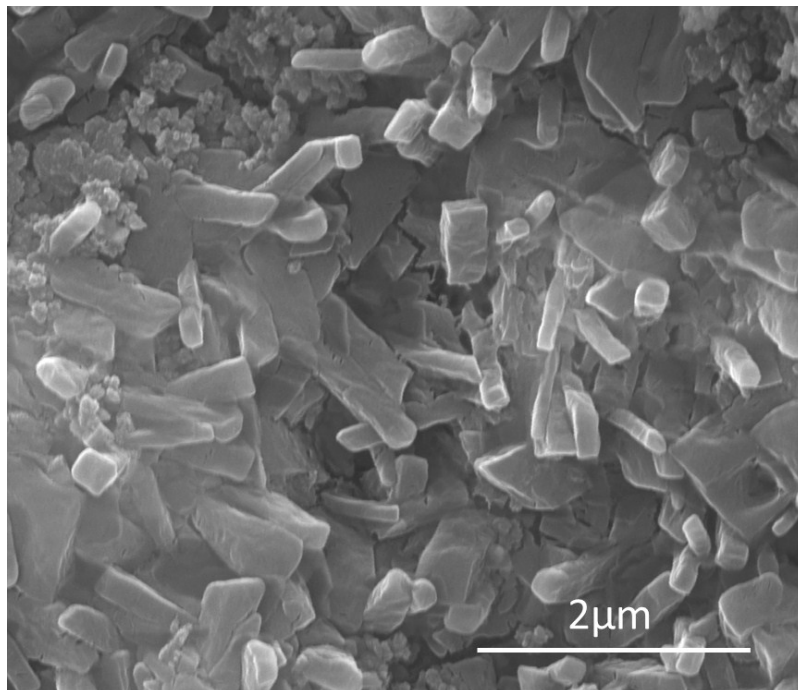


Figure S3. SEM images of the morphologies of HP-NiO-Ni electrode after cycling.

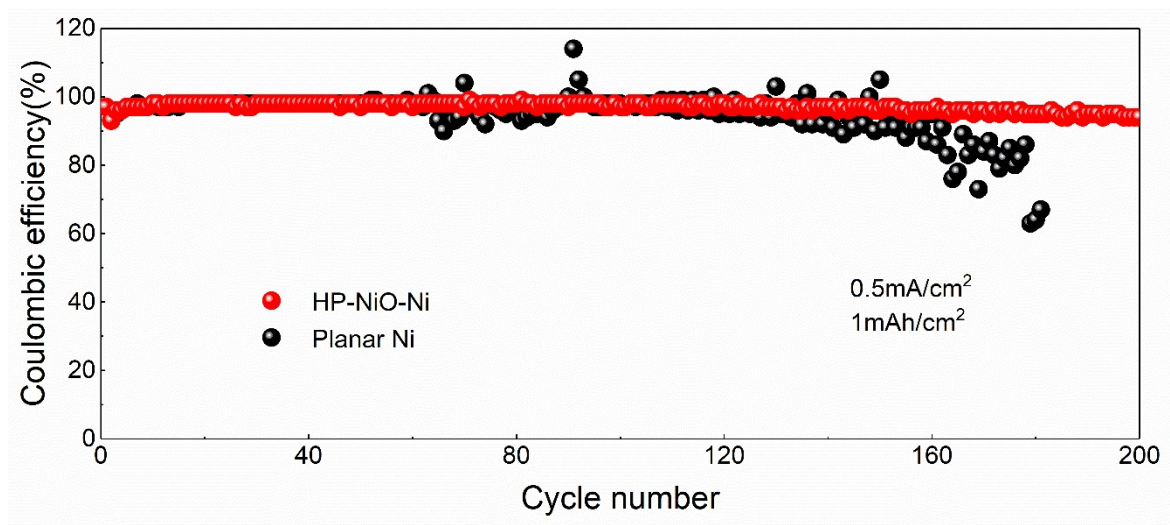


Figure S4. CE of Li plated onto HP-NiO-Ni and planar Ni substrate with a mount of

1mAh/cm² in 0.5mA/cm².

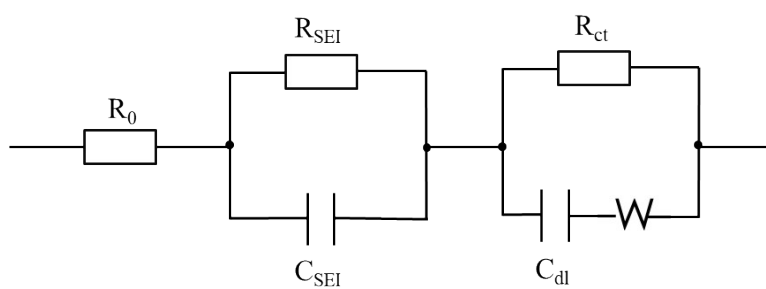


Figure S5. Equivalent circuit curves for Li | HP-NiO-Ni and Li | Planar Ni battery.

Table S1. SEI impedance fitted parameters for Figure 4 (d) and (e)

	HP-NiO-Ni	Planar Ni
1 st (Ω)	16.29	16.18
20 th (Ω)	4.008	5.681
50 th (Ω)	4.937	10.55