

Supplementary information

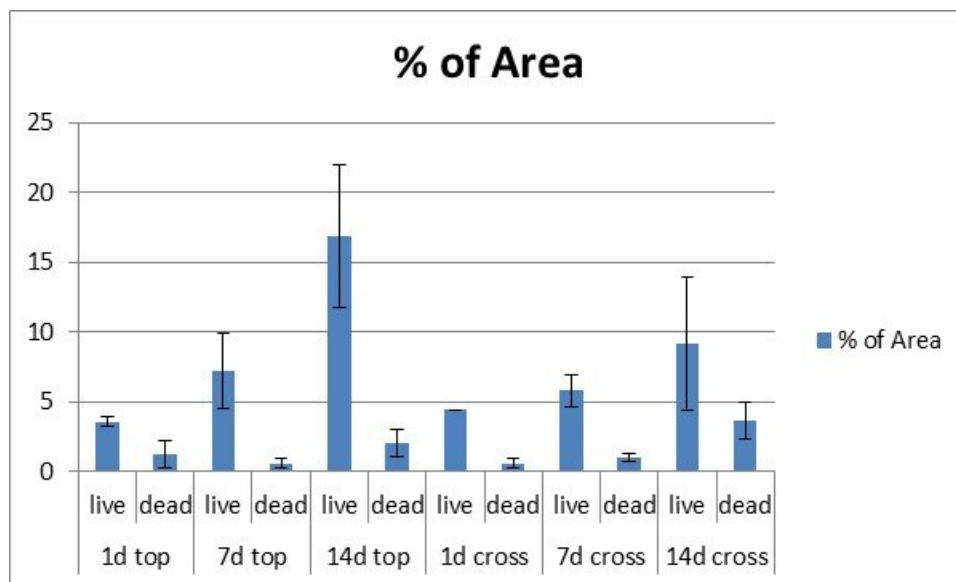


Figure 1: Percentage (%) of live/dead cells in the sponge. Values correspond to the data of two independent experiments

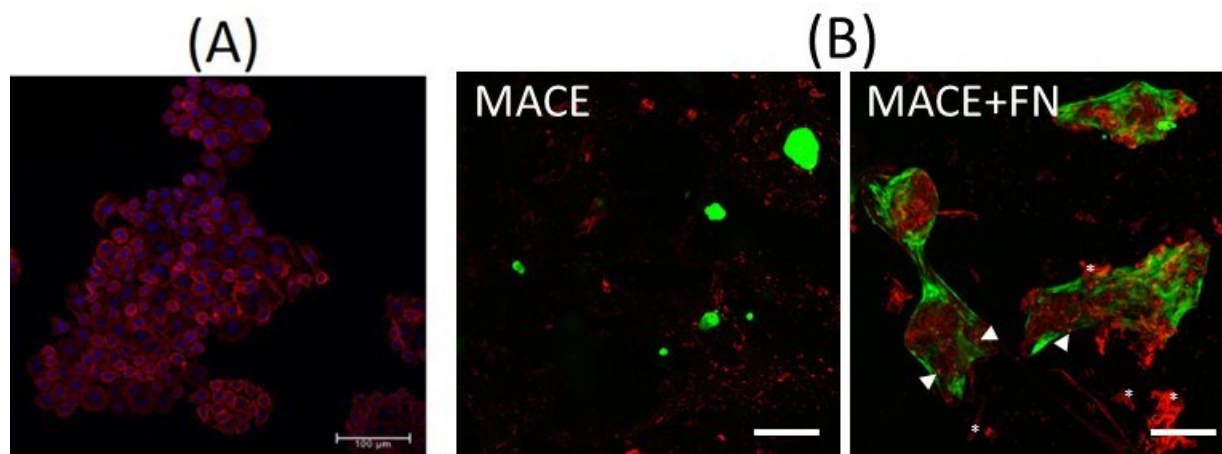


Figure 2: (A) AGS cells on TCPS and (B) Live dead ASCs after 7days in culture without and with fibronectin (FN) 10ug/mL. Some nuclei of dead cells are identified with arrow heads and the red fibrous structures correspond to autofluorescence of the sponge (*). Bars correspond to 200um.