

Fig. S1  $^1\text{H}$  NMR spectrum of compound L.

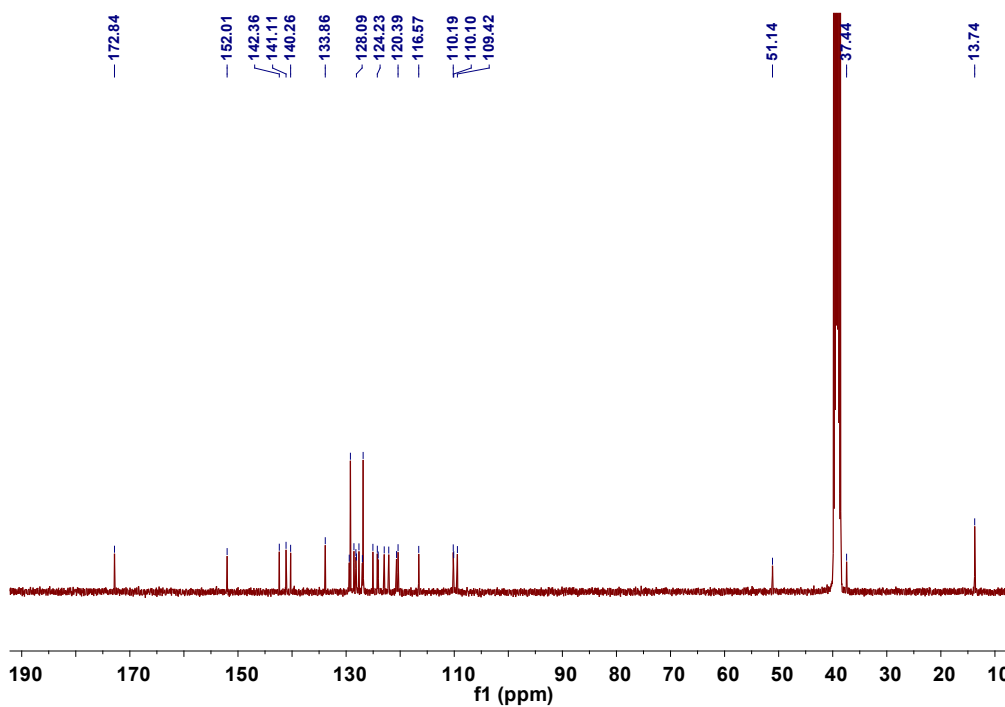


Fig. S2  $^{13}\text{C}$  NMR spectrum of compound L.

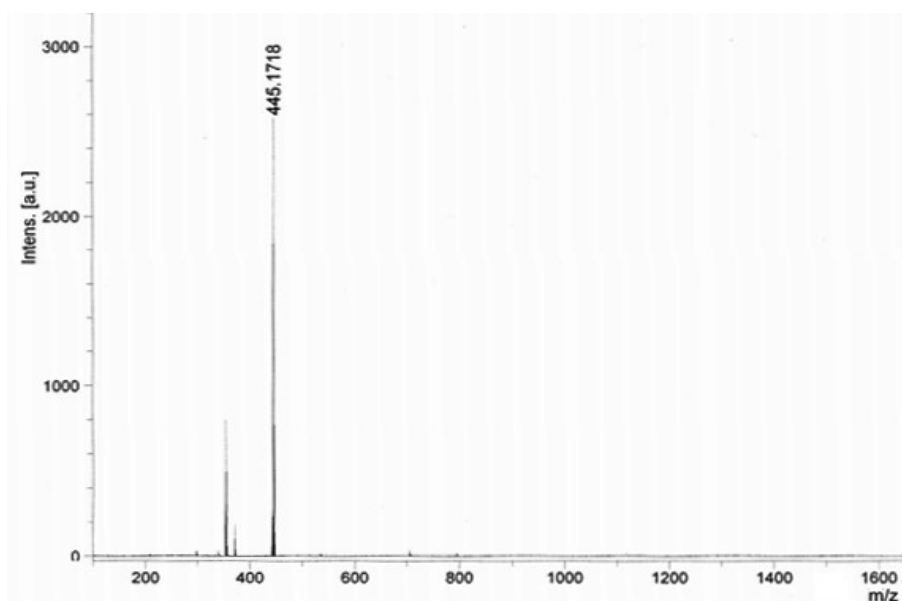


Fig. S3 ESI-mass spectrum of compound **L**.

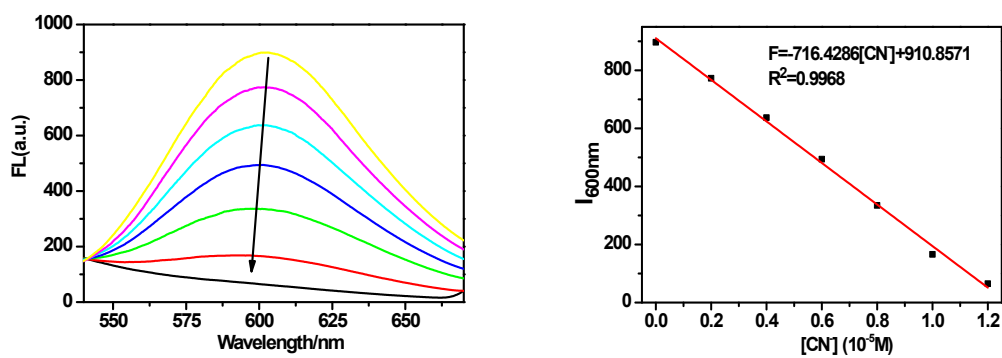


Fig. S4 (a) Fluorescence titration spectra of **L** ( $10 \mu\text{M}$ ) in DMSO/ $\text{H}_2\text{O}$  (3:2, v/v, pH=7.4) upon gradual addition of  $\text{CN}^-$ ; (b) Fluorescence intensity changes at 600 nm upon gradual addition of  $\text{CN}^-$ .  $\lambda_{\text{ex}} = 340 \text{ nm}$ . Slits: 5 nm/10 nm.