

## Supporting Information

### **Intelligent Protein-coated Bismuth Sulfide and Manganese Oxide Nanocomposites by Biomineralization for Multimodal Imaging- guided Enhanced Tumor Therapy**

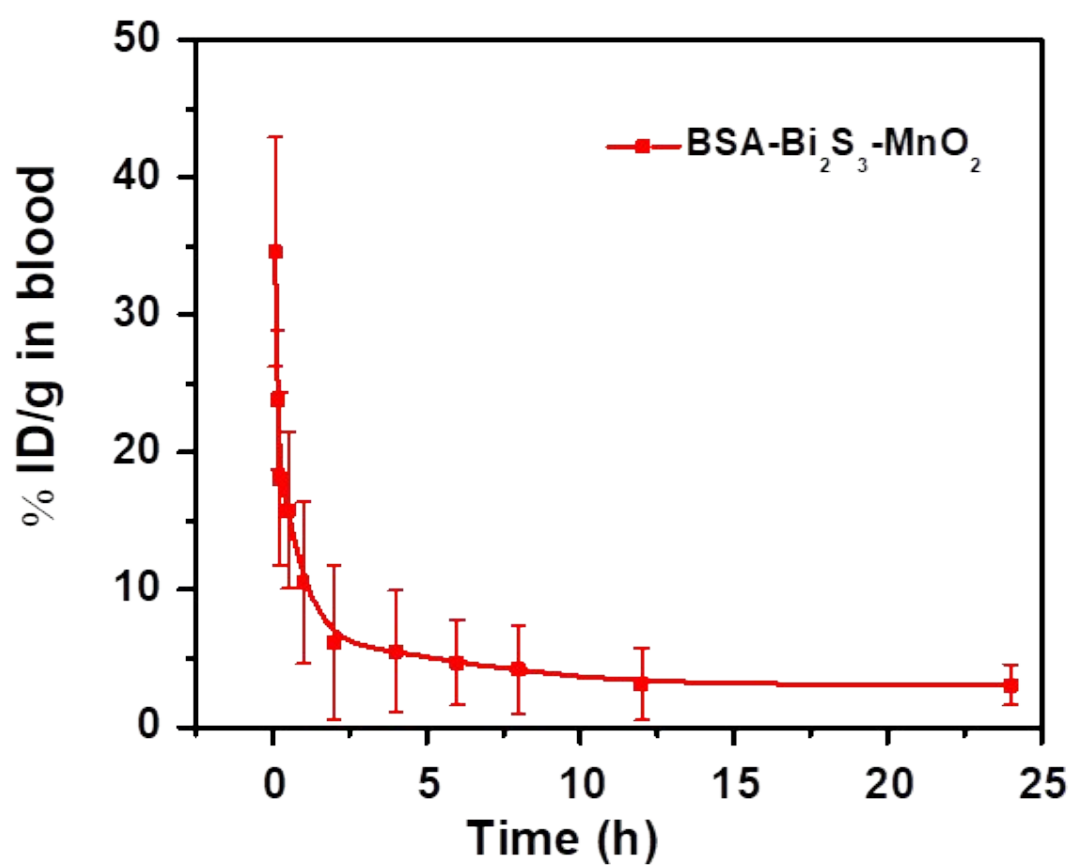
Lin Zhang<sup>#1</sup>, Qian Chen<sup>#2</sup>, Xinwei Zou<sup>1</sup>, Jiawen Chen<sup>2</sup>, Lvzhong Hu<sup>1</sup>, Ziliang Dong<sup>2</sup>,  
Jinhua Zhou<sup>1\*</sup>, Youguo Chen<sup>1\*</sup>, Zhuang Liu<sup>2</sup>, and Liang Cheng<sup>2\*</sup>

<sup>1</sup>Department of Obstetrics and Gynecology, the First Affiliated Hospital of Soochow  
University, Suzhou 215006, China.

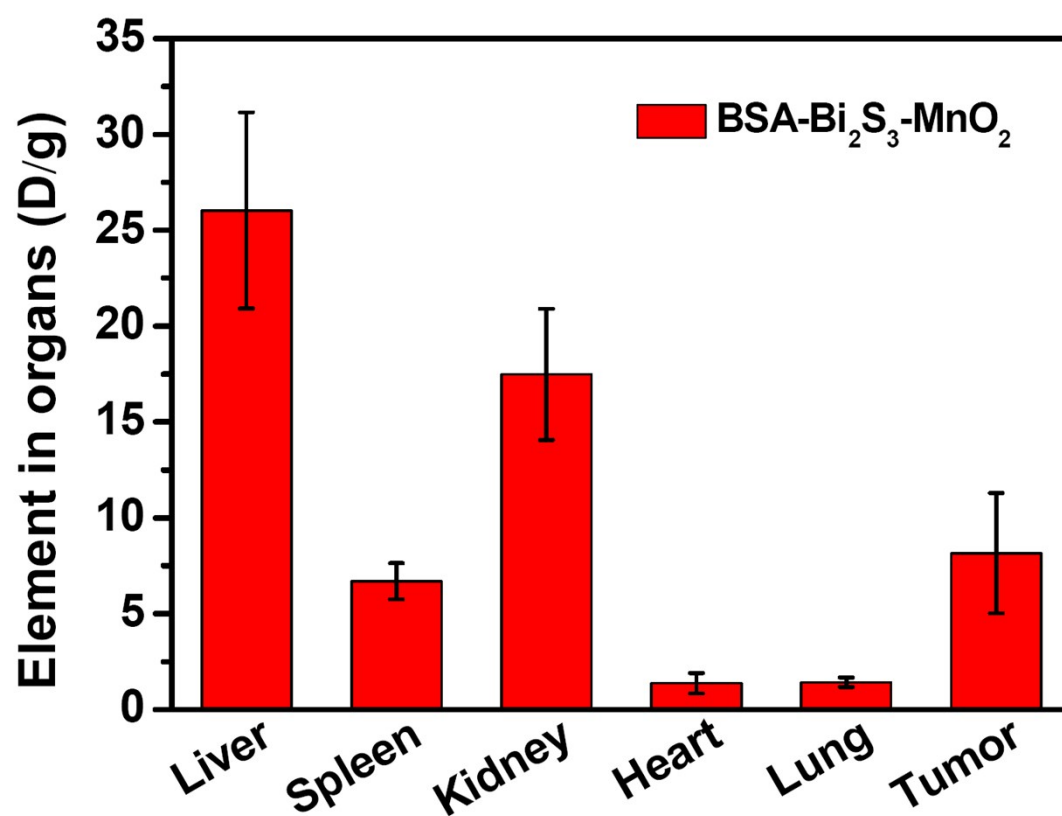
<sup>2</sup>Institute of Functional Nano & Soft Materials (FUNSOM), Collaborative Innovation  
Center of Suzhou Nano Science and Technology, Jiangsu Key Laboratory for Carbon-  
based Functional Materials and Devices, Soochow University, Suzhou, Jiangsu,  
215123, China.

# These two authors contributed equally to this work.

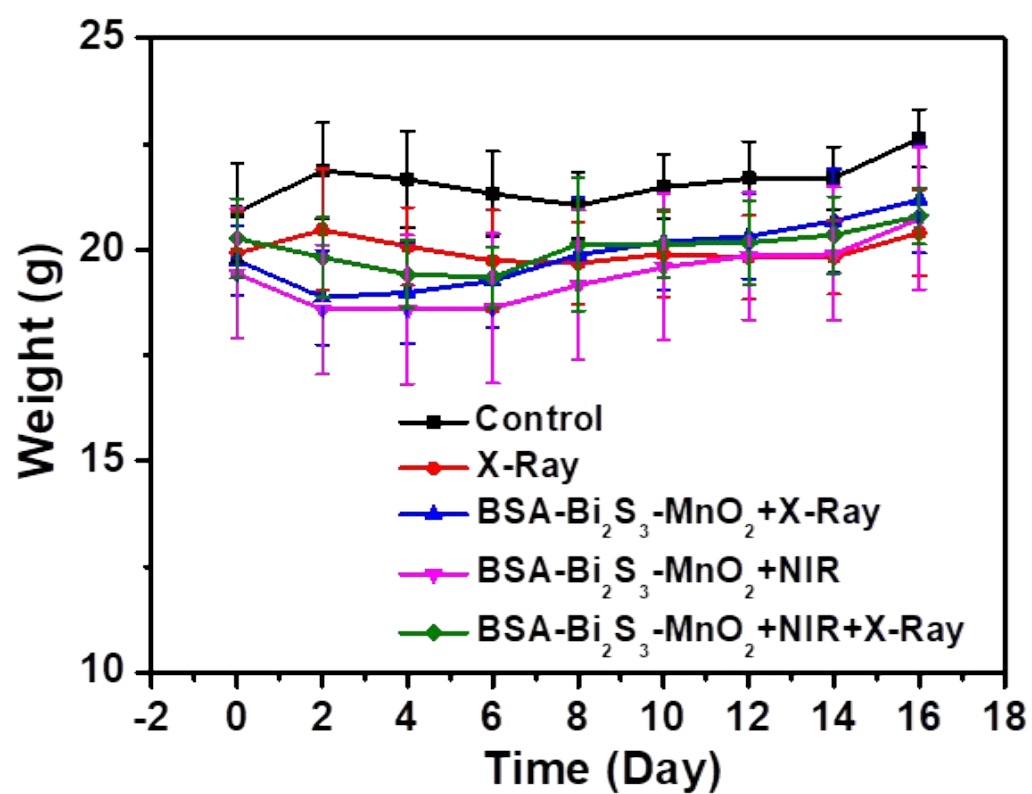
\*Email: [lcheng2@suda.edu.cn](mailto:lcheng2@suda.edu.cn); [jsjzhz@126.com](mailto:jsjzhz@126.com); [chenyouguo@suda.edu.cn](mailto:chenyouguo@suda.edu.cn)



**Supporting Figure S1.** The blood circulation of the mice after intravenous injection of BSA-Bi<sub>2</sub>S<sub>3</sub>-MnO<sub>2</sub> nanocomposites.



**Supporting Figure S2.** The biodistribution of the mice after intravenous injection of BSA-Bi<sub>2</sub>S<sub>3</sub>-MnO<sub>2</sub> nanocomposites.



Supporting Figure S3. Body weight of the mice with various treatments.