

Supplementary material

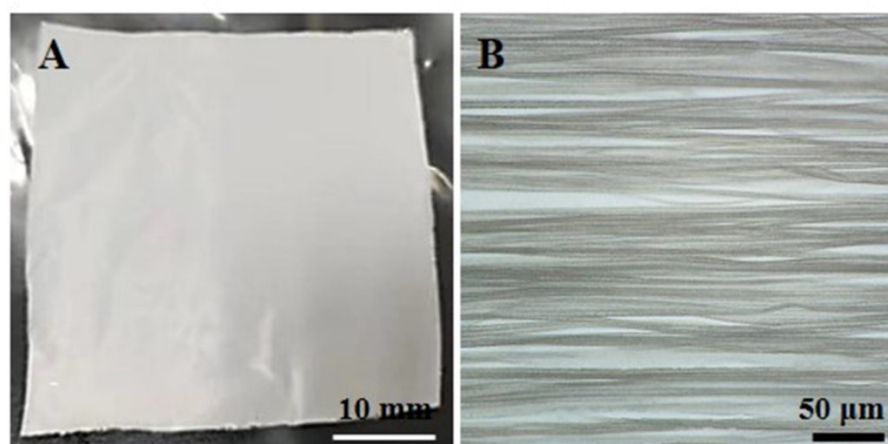


Figure S1. (A) The photo image of the aligned porous electrospun fibers scaffolds (scale bar = 10 mm); (B) Image of the electrospun fibers at lower magnification (scale bar = 50 μm)

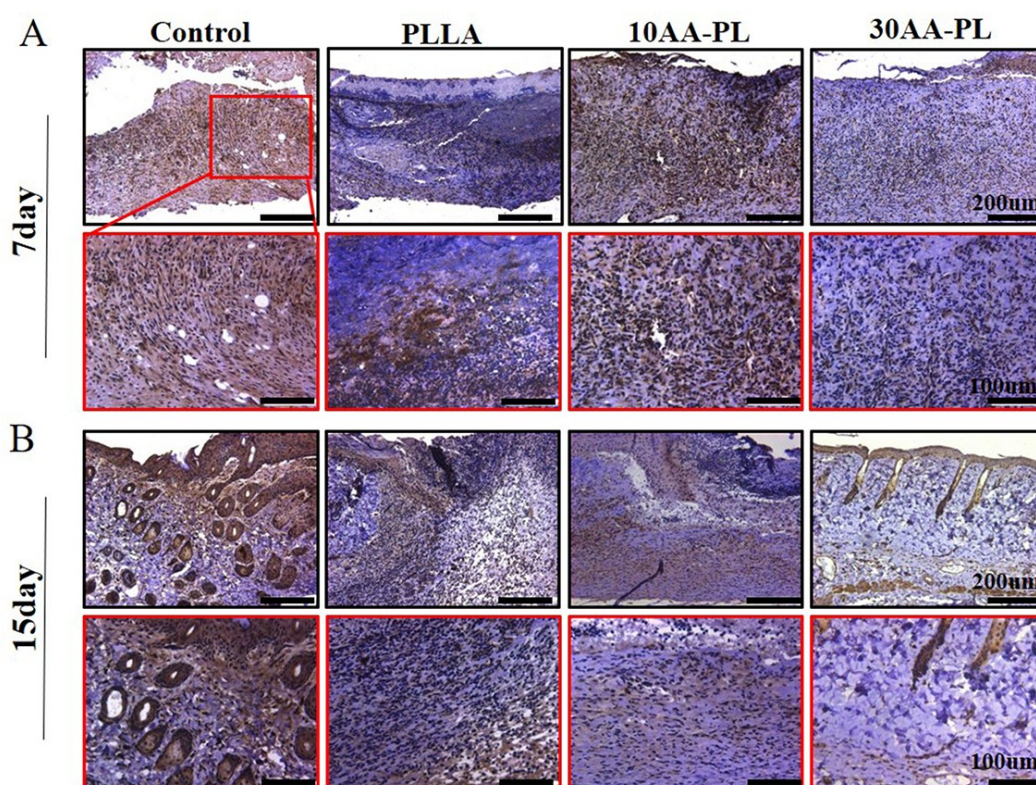


Figure S2. Immunohistochemical staining of IL6 at the wound tissues in the four treatment groups (Control, PLLA, 10 AA-PL and 30 AA-PL) at day 7(A) and day 15(B) after operation (IL6 positive cells marked in brown) (higher magnification: scale bar = 200 μm; lower magnification: scale bar = 100 μm).