

**Efficient manufacturing of tissue engineered cartilage *in vitro*  
by multiplexed 3D cultured method**

Yafang Chen, Yingying Teng, Hongfu Cao, Yuedi Yang, Yuxiang Wang, Xing Li,  
Yong Sun,\* Jie Liang, Yujiang Fan\* and Xingdong Zhang

National Engineering Research Center for Biomaterials, Sichuan University, 29  
Wangjiang Road, Chengdu 610064, P. R. China

**Author information**

**Corresponding Author**

\*Yong Sun

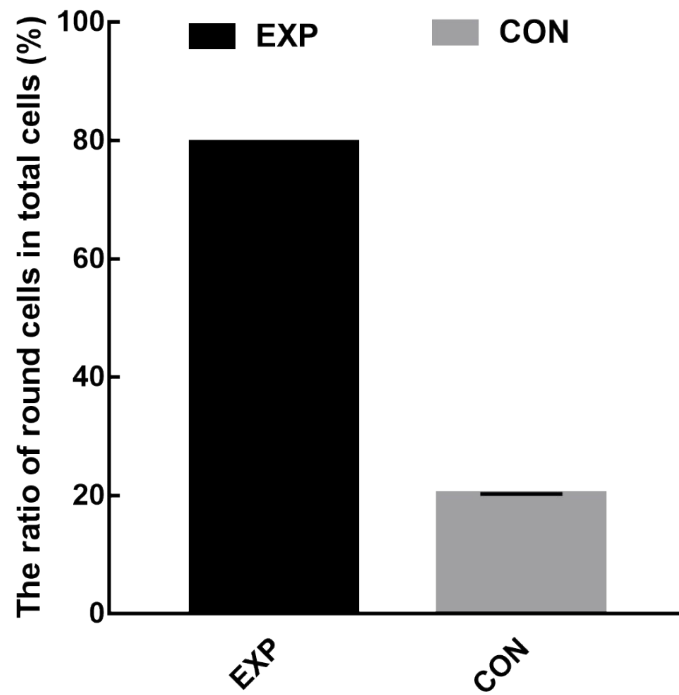
National Engineering Research Center for Biomaterials, Sichuan University, Chengdu  
610064, China

Tel: +86-28-85417654 Fax: +86-28-85417654 E-mail: sunyong8702@scu.edu.cn

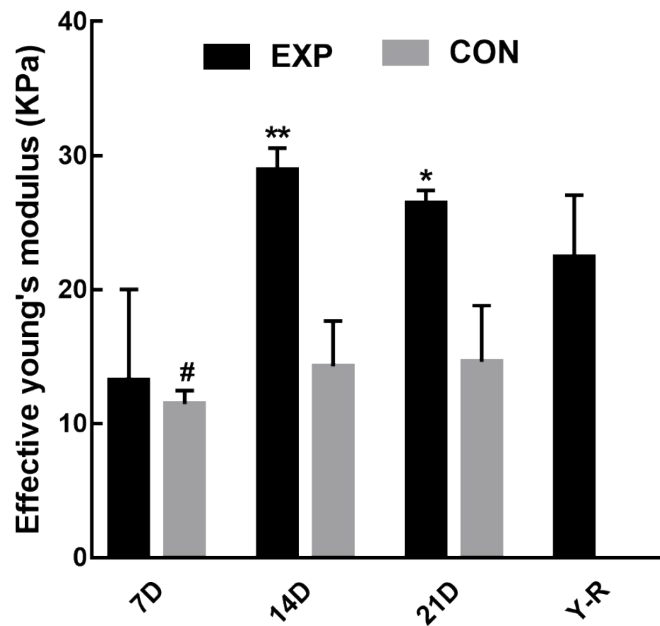
\*Yujiang Fan

National Engineering Research Center for Biomaterials, Sichuan University, Chengdu  
610064, China

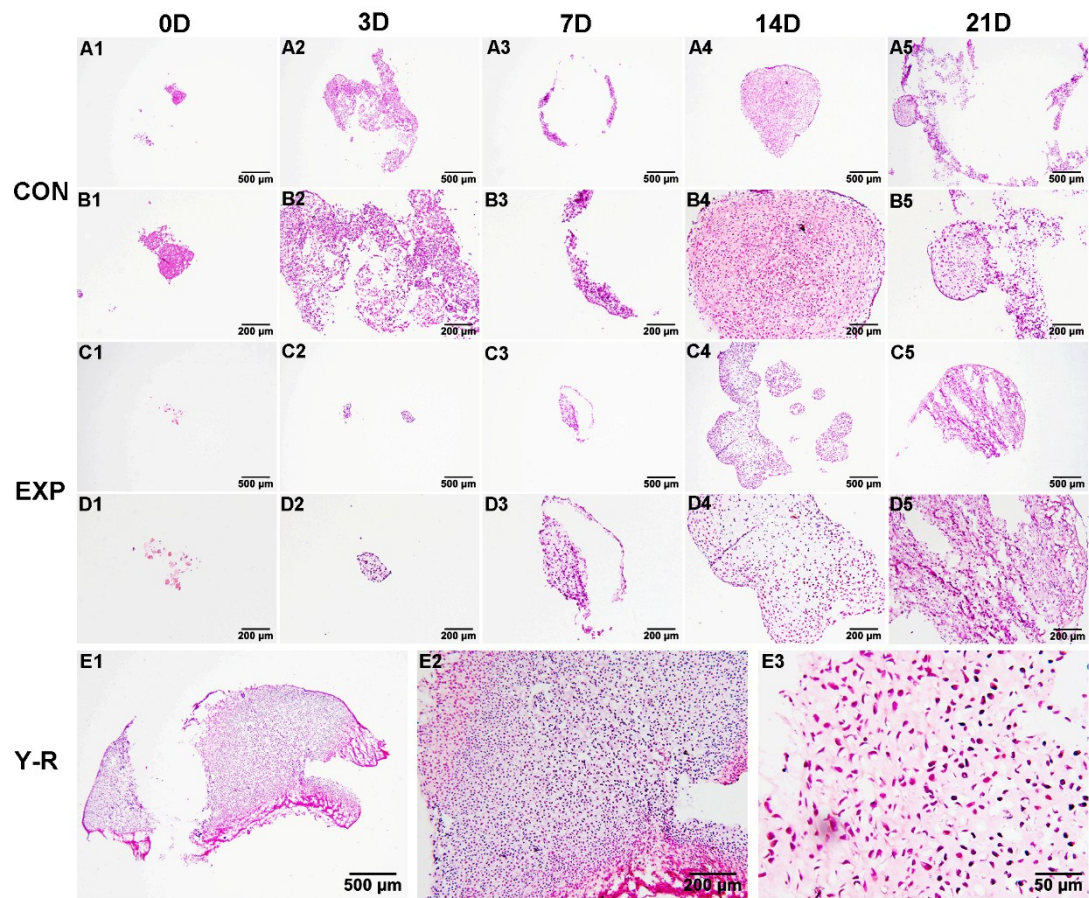
Tel: +86-28-85416196 Fax: +86-28-85416196 E-mail: fan\_yujiang@scu.edu.cn



**Figure S1.** The ratio of round cells in total cells from rhodamine and DAPI picture at 21days.



**Figure S2.** The Effective young's modulus in CON group, EXP group and Y-R group. (n = 6; \*p < 0.05, \*\*p < 0.01 and \*\*\*p < 0.001; vs. Y-R group, #P < 0.05, ##P < 0.01, ###p < 0.001)



**Figure S3.** HE staining of CON group (A1-B5), EXP group (C1-D5) and Y-R group (E1-E3). Scale bar: A1-A5, C1-C5, E1:500  $\mu$ m; B1-B5, D1-D5, E2: 200  $\mu$ m; E3:50  $\mu$ m.