

Supporting Information

Substance P-loaded electrospun small intestinal submucosa/poly(ϵ -caprolactone)-ran-poly(L-lactide) sheet to facilitate wound healing through MSC recruitment

Min Ju Kim, Yun Bae Ji, Ji Young Seo, Seung Hun Park, Jae Ho Kim, Byoung Hyun Min,

Moon Suk Kim^{1,*}

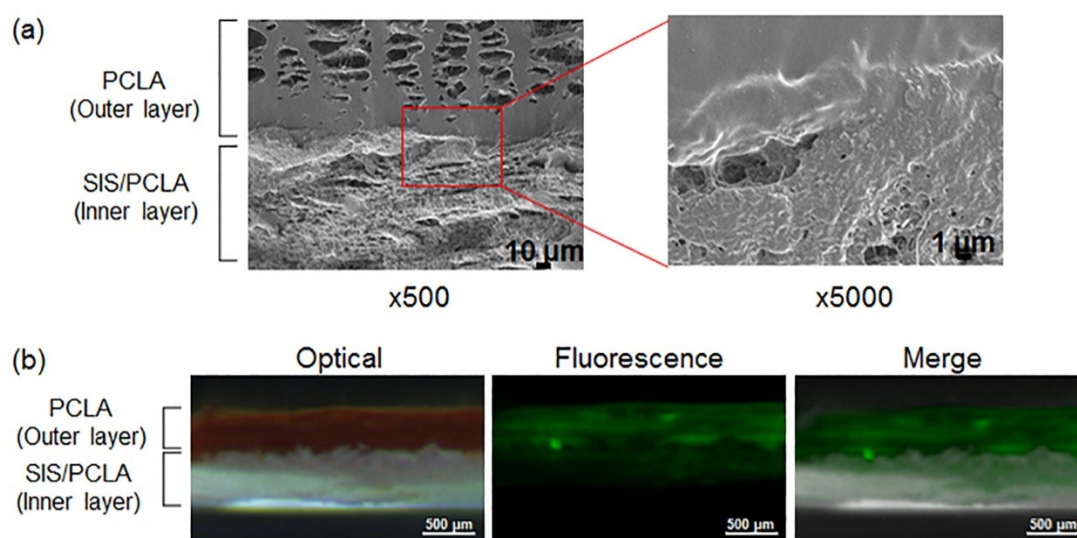


Figure S1. (a) SEM images of double-layered sheets with SIS/PCLA as the inner layer and PCLA as the outer layer and (b) optical, fluorescence and merged images double-layered sheets with SIS/PCLA as the inner layer and fluorescent-loaded PCLA as the outer layer.