

Electronic Supplementary Information (ESI) for Journal of Materials Chemistry B. This journal is © The Royal Society of Chemistry 2019

Electronic Supplementary Information for:

Design and characterization of a hypersensitive glucose sensor : two enzymes co-fixed on a copper phosphate skeleton

Ye Yuan,^a Zhendong Fu,^a Kai Wang,^a Zhenyu Zhao,^a Hui Li,^a Zhi Wang^{†abc} and Liping Wang^{†abc}

^a School of Life Sciences, Jilin University, Changchun 130012, China.

^b Key Laboratory for Molecular Enzymology and Engineering, the Ministry of Education, Jilin University, Changchun 130012, China.

^c Engineering Laboratory for AIDS Vaccine, Jilin University, Changchun 130012, China.

* Correspondence: wangzhi@jlu.edu.cn, wanglp@jlu.edu.cn.

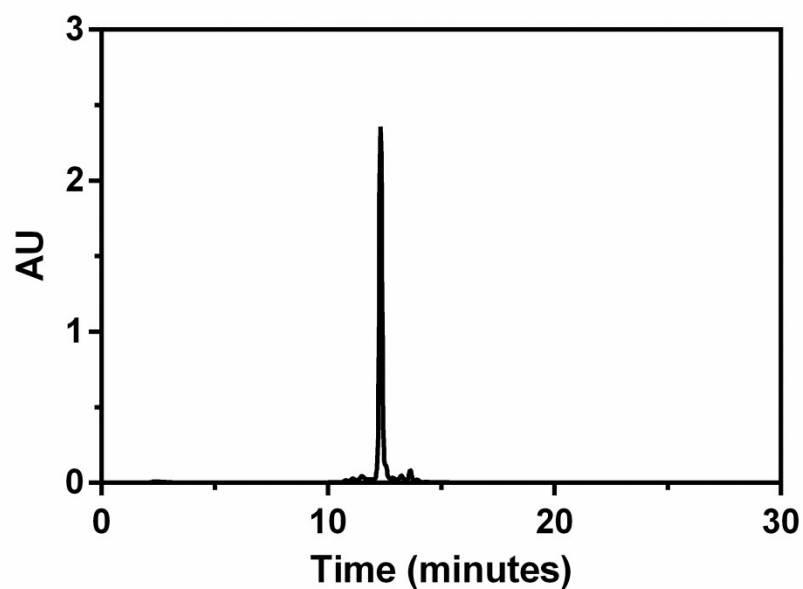


Fig. S1 RP-HPLC of DhHP-6.

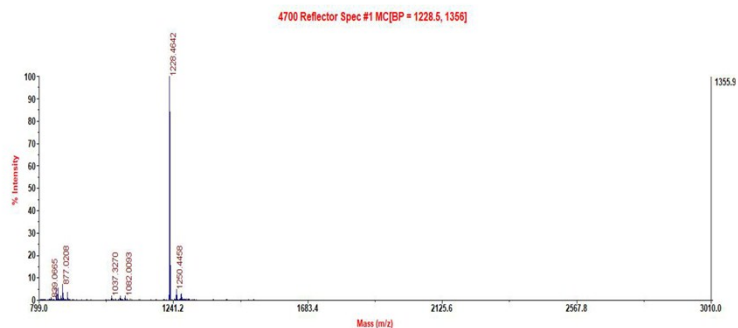


Figure. S2 TOF-MS of DhHP-6.

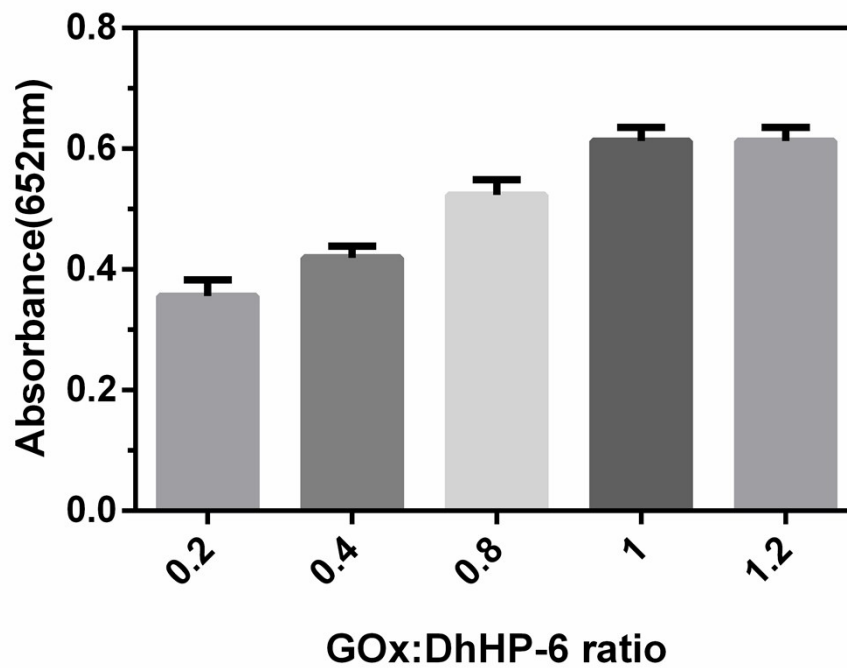


Fig. S3 Catalytic activity at different GOx:DhHP-6 ratio, in which the concentration of GOx was fixed at 1.0 mg mL⁻¹.

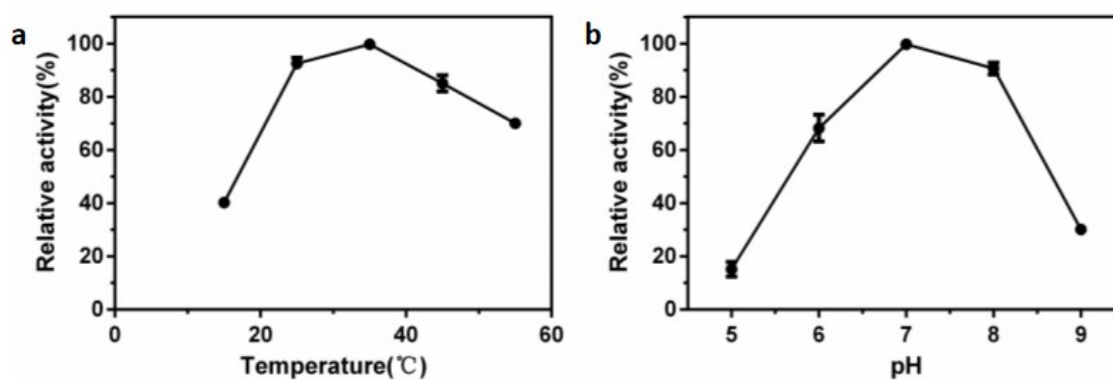


Fig. S4 Effects of (a) temperature and (b) pH on the catalytic activity of DhHP-6.

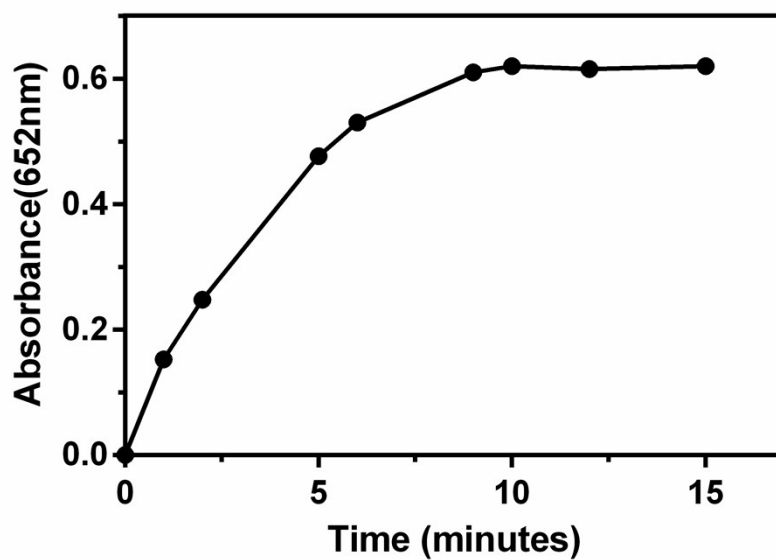


Fig. S5 Response curve against time at A_{652} in the presence of 1.0 mM TMB, 1.0 mM glucose and GOx&DhHP-6- $\text{Cu}_3(\text{PO}_4)_2$ for 0-15 min.