

Supplementary information

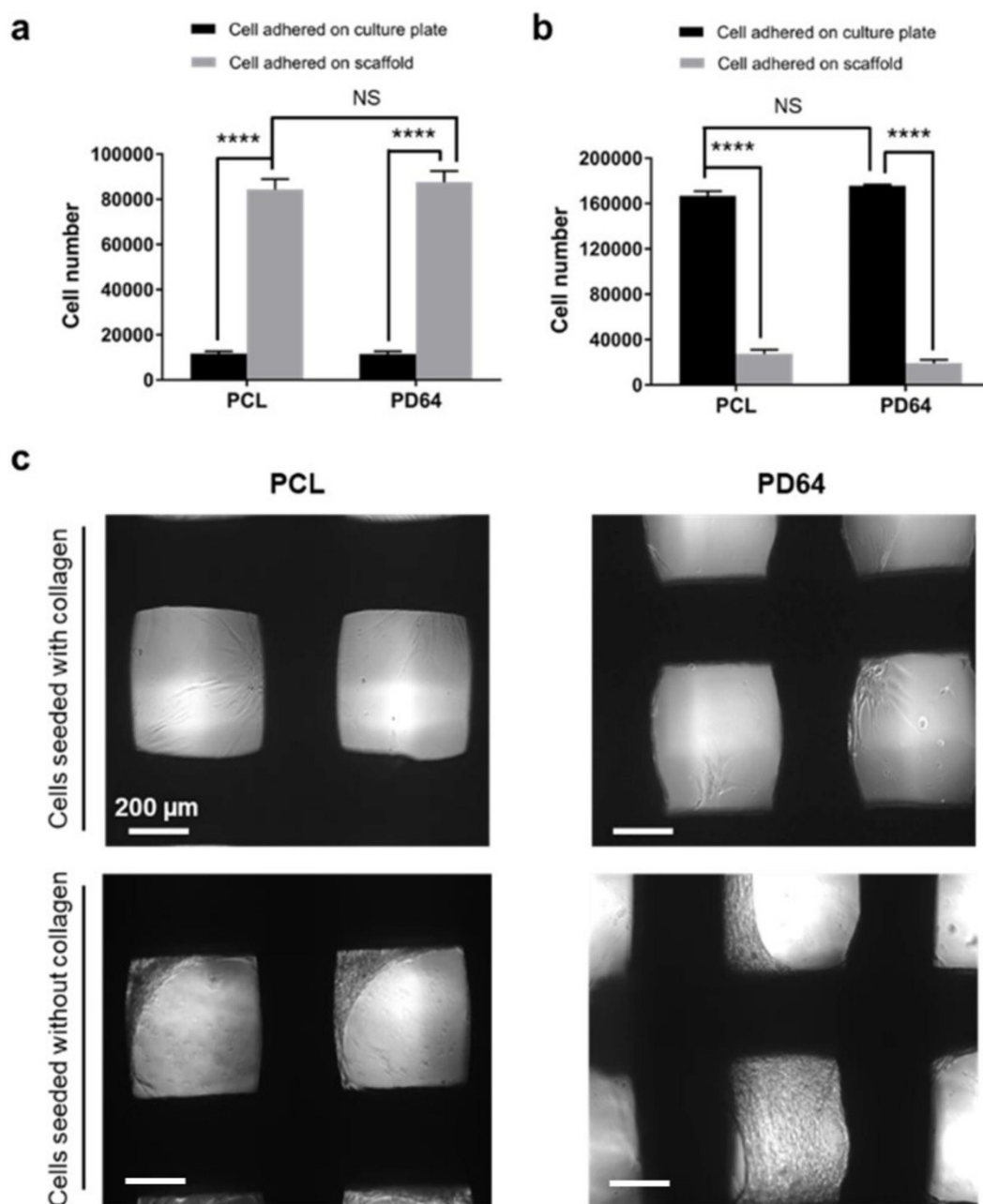


Fig. S1 Attachment of hBMSCs on PCL and PD64 scaffolds. (a) Bar graph showing the percentage of cells that were attached within the scaffolds or culture disk after the cells were seeded with collagen gel and (b) without collagen gel. **** $p < 0.001$ ($n = 3$). (c) Micrographs showing the attachment of cells within the culture disk after the cells were seeded with or without collagen gel.

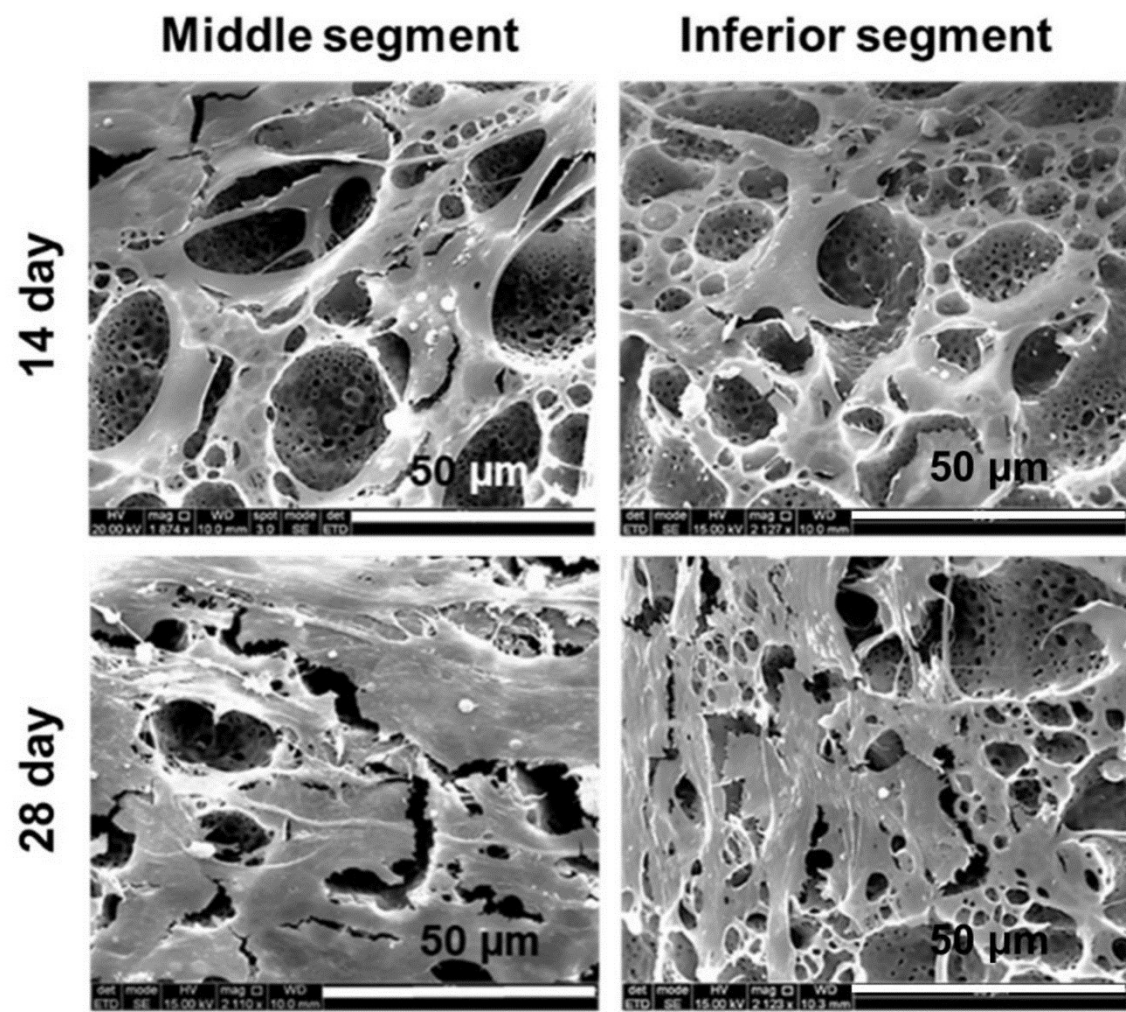


Fig. S2 SEM images showing the attachment and growth of hBMSCs cultured on the middle and interior regions of PCL and PD64 scaffolds for 14 and 28 days.