

## Supporting information

### **An injectable thermosensitive hydrogel loaded with an ancient natural drug colchicine for myocardial repair after infarction**

Yu Chen<sup>a,‡</sup>, Jiayue Shi<sup>b,‡</sup>, Yaping Zhang<sup>a</sup>, Jiajun Miao<sup>b</sup>, Zhe Zhao<sup>a</sup>, Xian Jin<sup>a</sup>, Liang Liu<sup>a</sup>, Lin Yu<sup>b,c,\*</sup>, Chengxing Shen<sup>a,\*</sup>, Jiandong Ding<sup>b,c</sup>

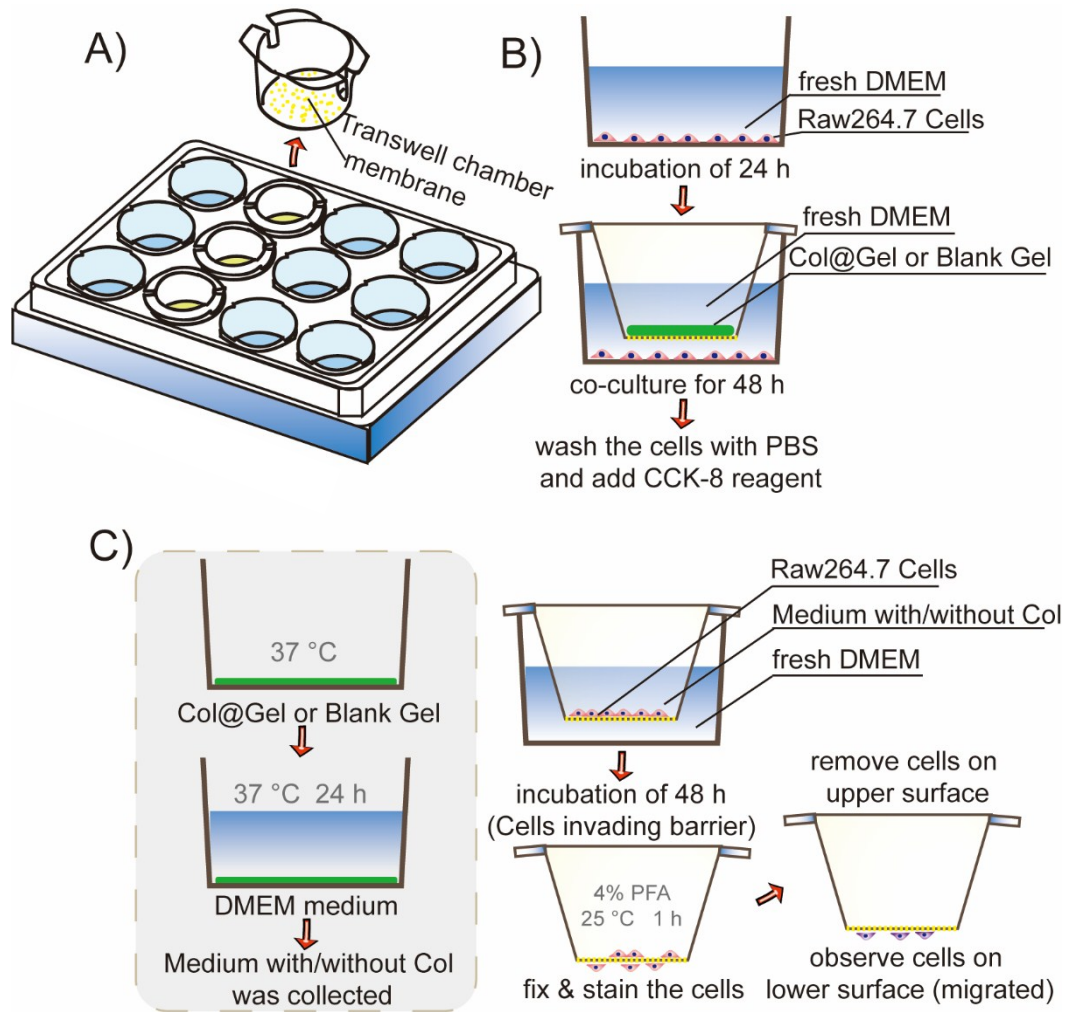
<sup>a</sup>Department of Cardiology, Shanghai Jiao Tong University Affiliated Sixth People's Hospital, Shanghai 200233, China.

<sup>b</sup>State Key Laboratory of Molecular Engineering of Polymers, Department of Macromolecular Science, Fudan University, Shanghai 200438, China.

<sup>c</sup>Zhuhai Fudan Innovation Institute, Zhuhai, Guangdong 51900, China

<sup>‡</sup>These authors contributed equally to this work.

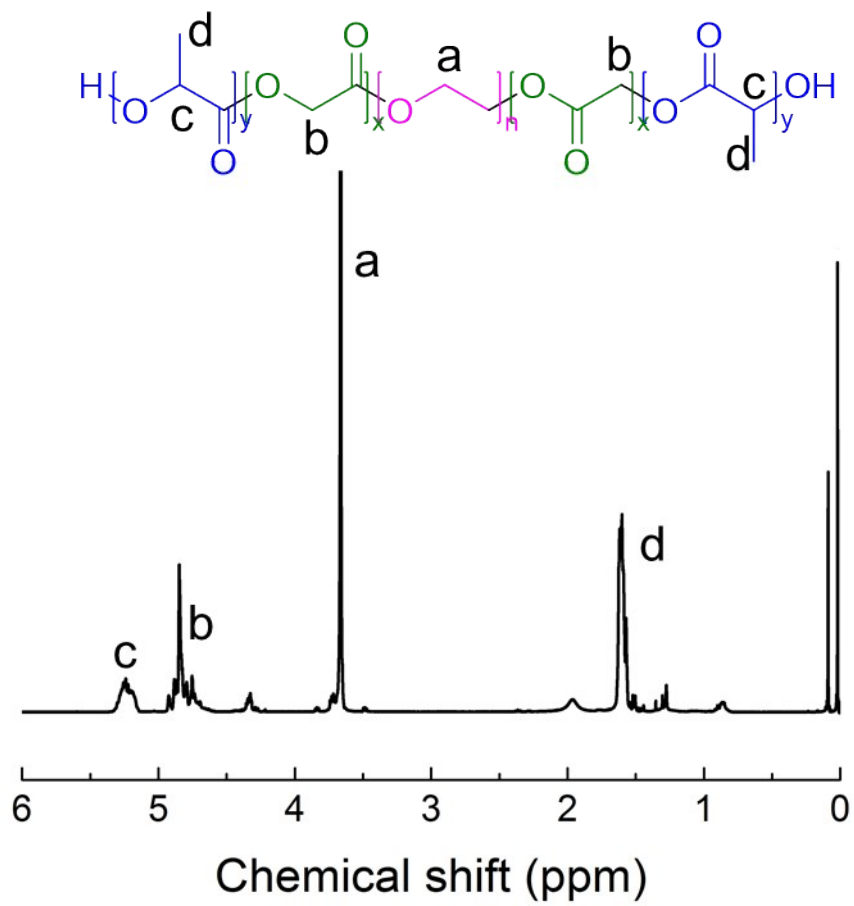
\*Corresponding authors. E-mail address: [yu\\_lin@fudan.edu.cn](mailto:yu_lin@fudan.edu.cn) (L.Yu) and [shencx@sjtu.edu.cn](mailto:shencx@sjtu.edu.cn) (C. Shen)



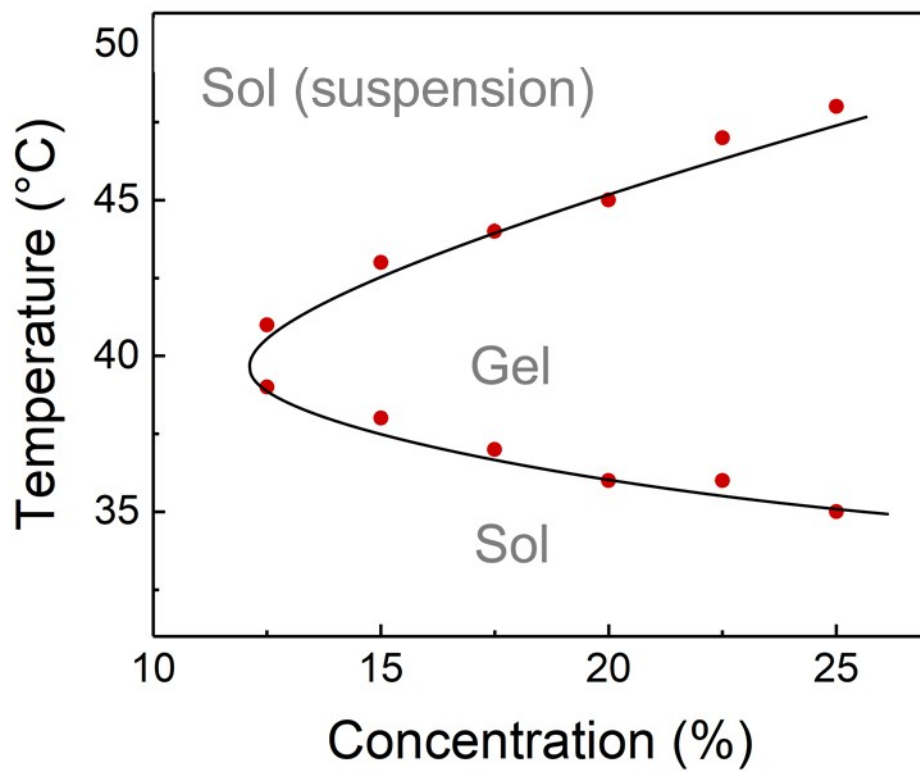
**Fig. S1** A) The sketch of Transwell chambers and cell culture plates. B) The diagram of *in vitro* cytotoxicity assay which is measured with a CCK-8 assay. C) The diagram of *in vitro* cell migration assay which is measured by a Transwell assay.



**Fig. S2** Electrocardiogram changes pre and post-MI. A: Electrocardiogram pre-ligation of LAD of mouse, B: Electrocardiogram post-ligation of LAD of mouse.



**Fig. S3** <sup>1</sup>H-NMR spectrum of as-synthesized PLGA-PEG-PLGA triblock copolymer.



**Fig. S4** Phase diagram of PLGA-PEG-PLGA aqueous solution.