

## Supporting Information

### **Tunable Dielectric and Other Properties in High- Performance Sandwich-type Polyimide Film by Adjusting the Porous Structure**

Yingyi Ma,<sup>\*,a</sup> Le Xu,<sup>a</sup> Zian He,<sup>a</sup> Junwen Xie,<sup>a</sup> Lei Shi,<sup>b,c</sup> Mingyan Zhang,<sup>a</sup> Wenlong

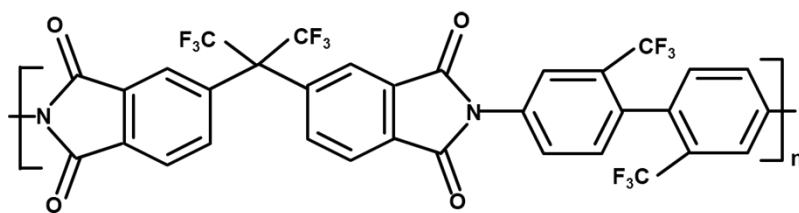
Zhang,<sup>a</sup> Weiwei Cui<sup>a</sup>

<sup>a</sup>School of Materials Science and Engineering, Harbin University of Science and Technology,  
Harbin 150040, China

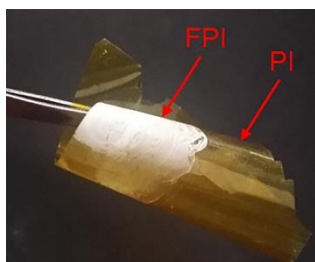
<sup>b</sup>Advanced Materials Institute, Qilu University of Technology (Shandong Academy of Sciences),  
Jinan 250014, China;

<sup>c</sup>Shandong Provincial Key Laboratory for High Strength Lightweight Metallic Materials, Jinan  
250014, China

\*To whom corresponding should be addressed. Email: [mayingyi@hrbust.edu.cn](mailto:mayingyi@hrbust.edu.cn).



**Figure S1.** The chemical structure of FPI.



**Figure S2.** The composite film after suffering drastic rinsing steps.