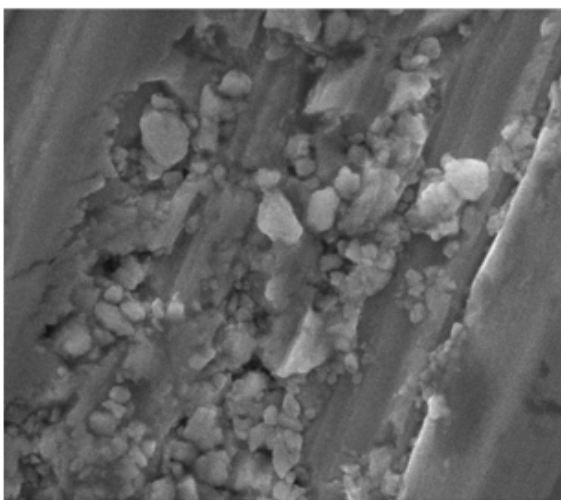
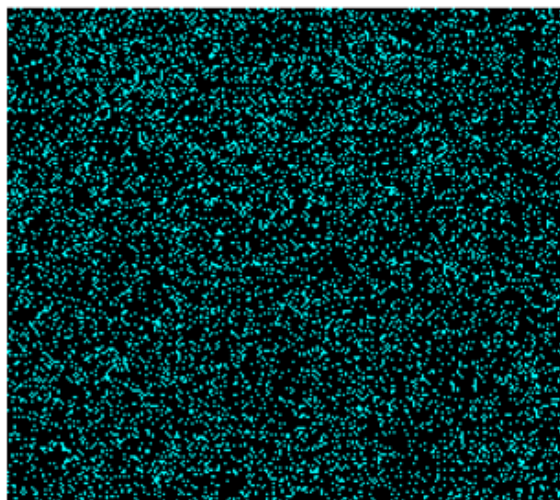


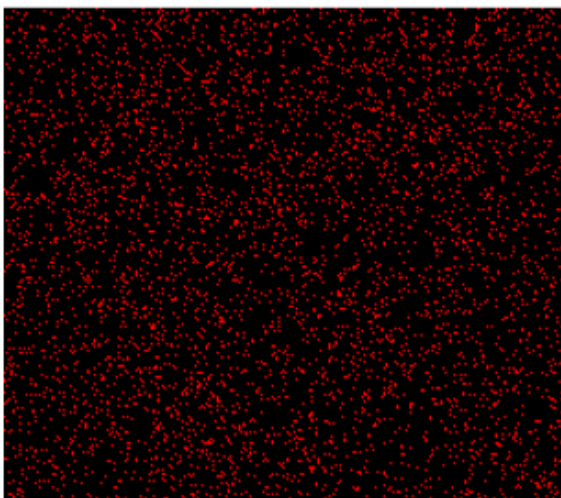
Supplementary Information



Electron Image 1



Ag La1



Te La1



Tl La1

Figure S1. SEM images of " $\text{Tl}_{4.05}\text{Ag}_{18}\text{Te}_{11}$ ". Each image corresponds to a width of 13 μm .

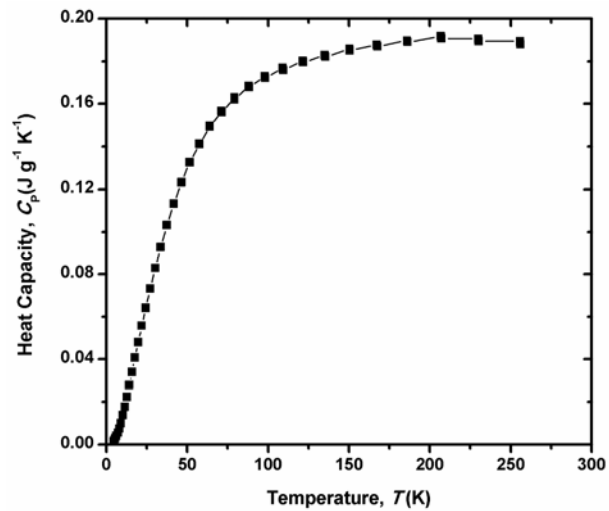


Figure S2. Specific heat of “ $Tl_{4.05}Ag_{18}Te_{11}$ ”.

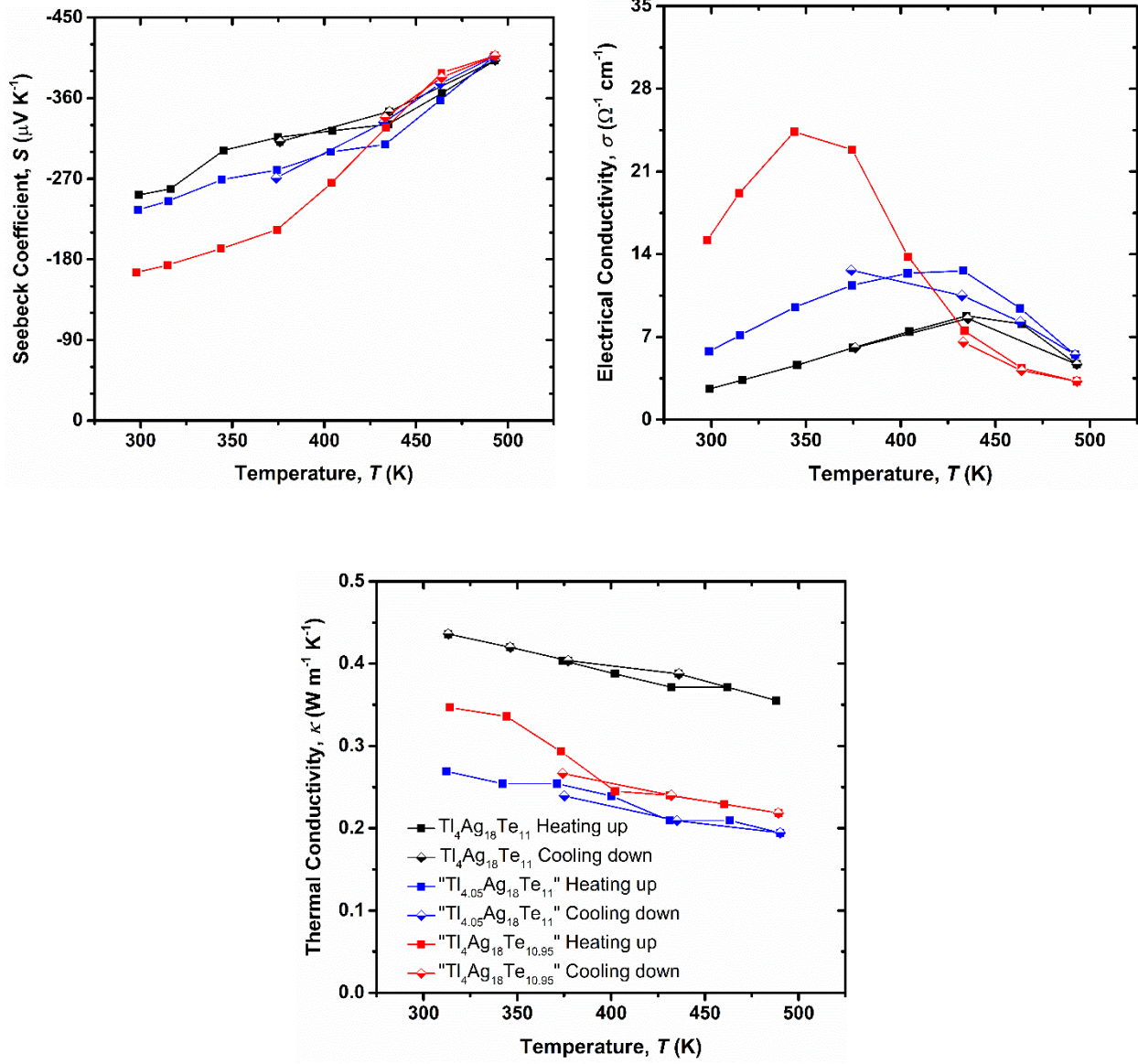


Figure S3. Comparison of the heating and the cooling data. During cooldown, a few data points were measured to verify the stability of the materials under the measurement conditions. These are presented in the figures below via half-open symbols.