

Supporting Information ESI[†]

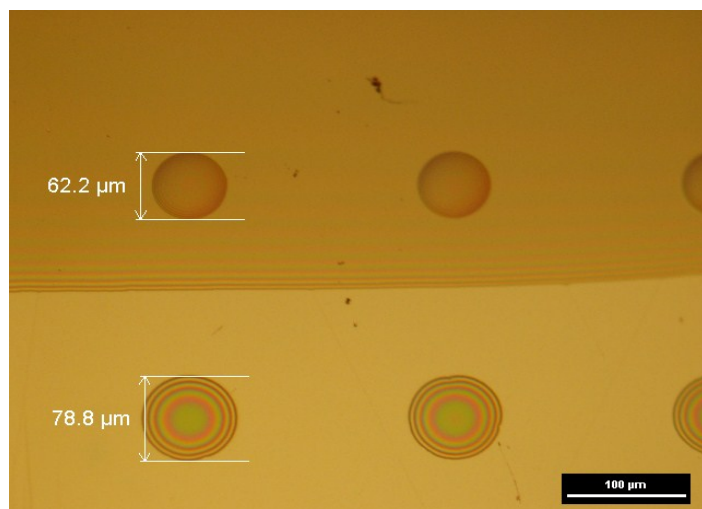


Fig. S1 Optical microscopic view of polyimide ink single droplets deposited on polyimide film (top) and Upilex (bottom)

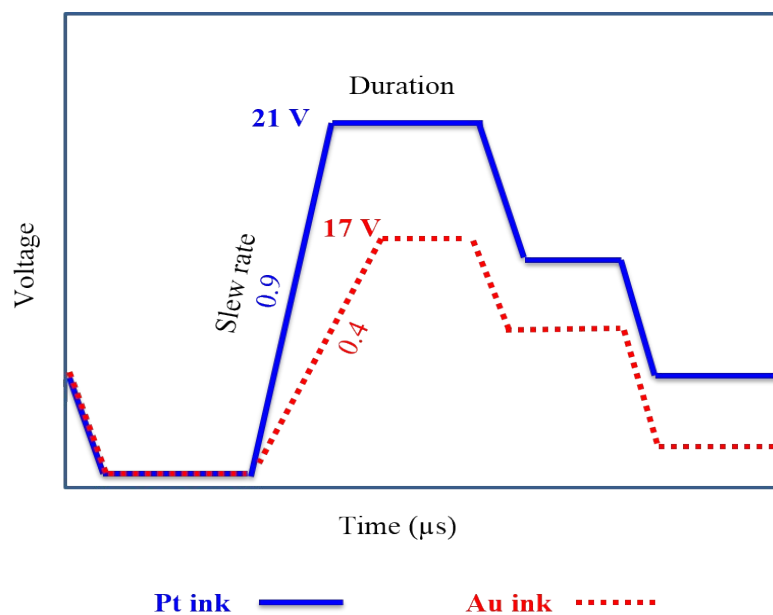


Fig. S2 Jetting waveform of Dimatix Inkjet-printer adapted for platinum and gold inks

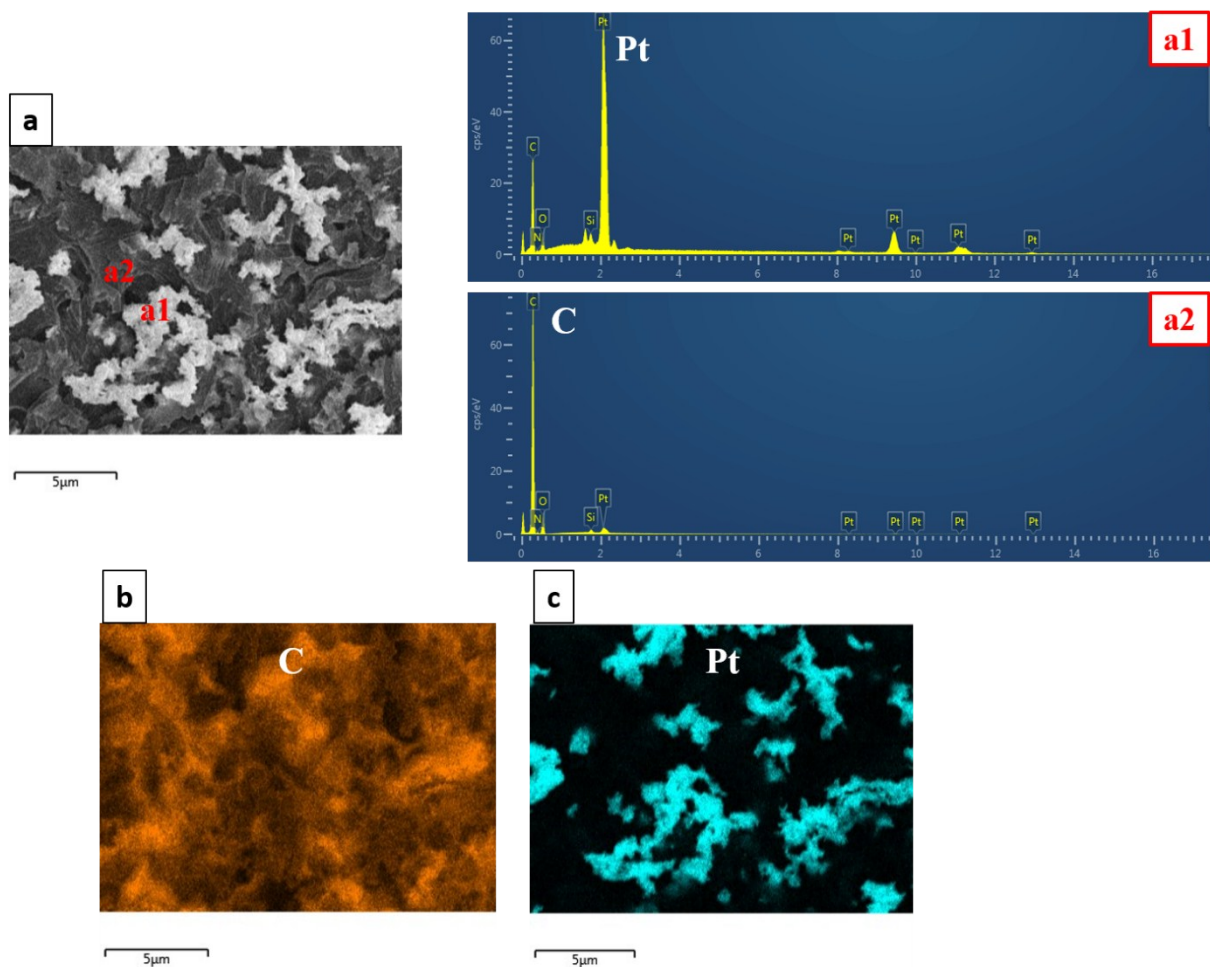


Fig. S3 a) SEM image and the corresponding EDS spectra of the platinum layer printed on Upilex and annealed at 350°C b) EDS mapping of elemental carbon c) EDS mapping of elemental platinum

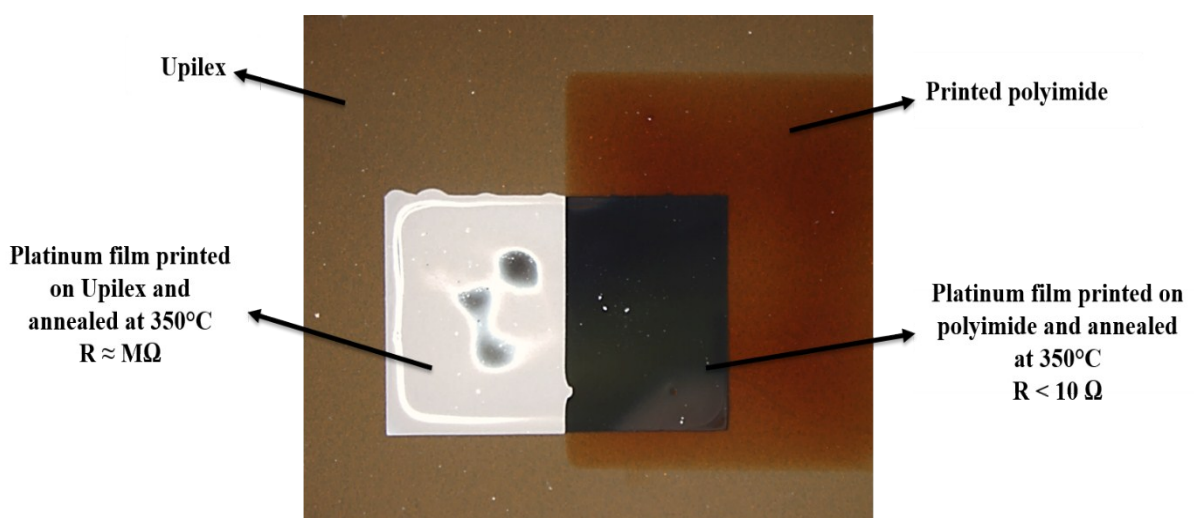


Fig. S4 Image observed by binocular microscopy onto 2 different substrates: Upilex (left) and printed polyimide (right) and annealed at 350 °C

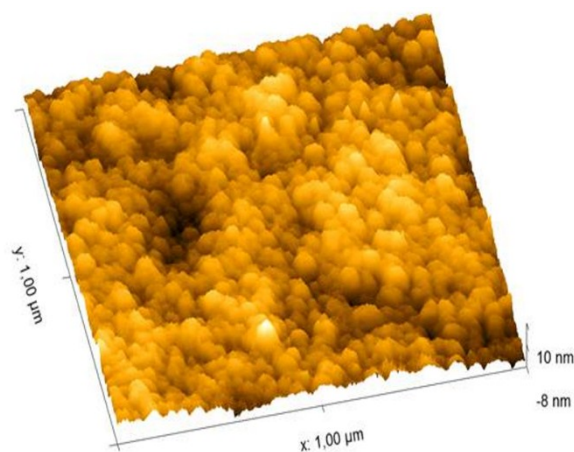
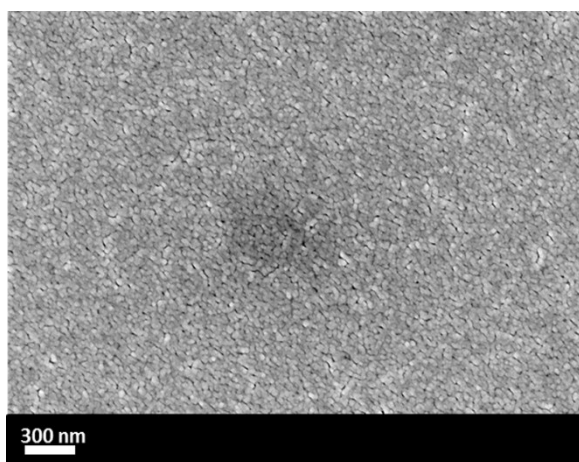


Fig. S5 Morphology of the platinum film printed on the polyimide and annealed at 350 °C, observed by SEM and AFM

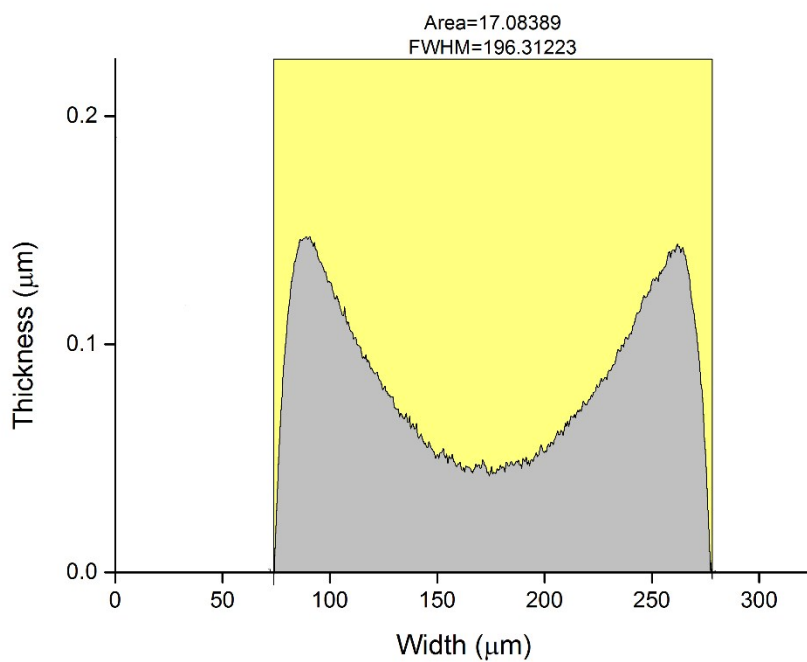


Fig. S6 Section of platinum pattern measured by mechanical profilometer

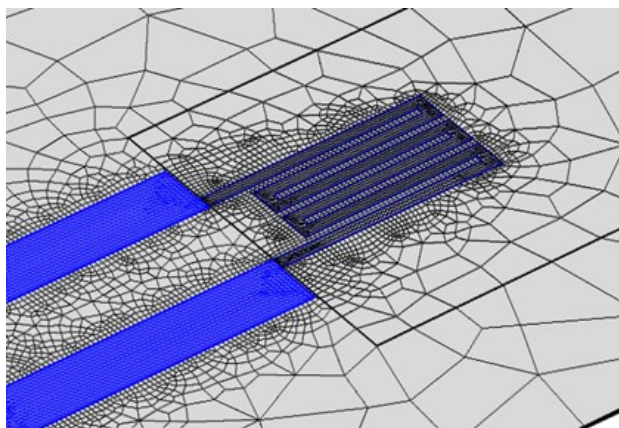


Fig. S7 View of the “free triangular” mesh used in the heater simulation