

Multidimensional hierarchical structure designed for lateral strain-isolated ultrasensitive pressure sensing

*Junyun Li¹, Song Chen¹, Zefei Peng, Zhifu Deng, Shuting Xing, Yaoyi Wu, Shuqi Liu, Lan Liu**

**College of Materials Science and Engineering, Key Lab of Guangdong Province for High Property and Functional Macromolecular Materials, South China University of Technology, Guangzhou, 510640, P. R. China.*

[¹ These authors contribute equally to this work.](#)

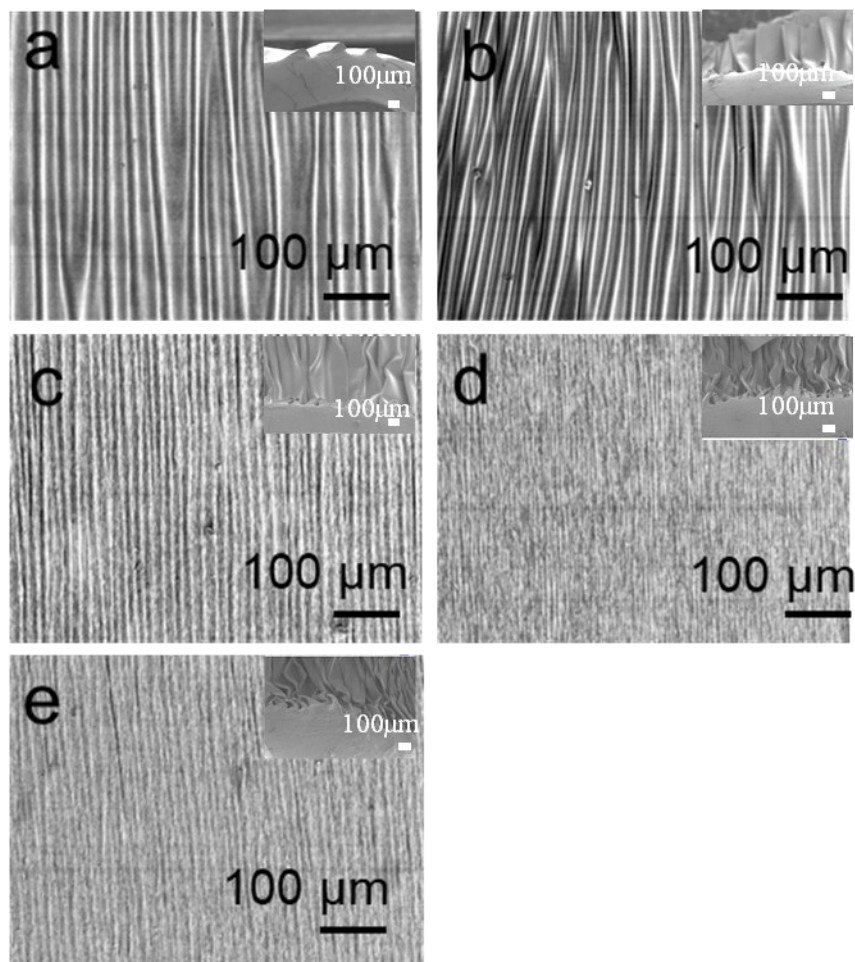


Fig. S1 Surface SEM morphology of AgNWs/PVA/VHB™ SUPS prepared by different VHB™ pre-stretch degrees: 10% (a), 50% (b), 100% (c), 200% (d) and 300% (e), respectively.

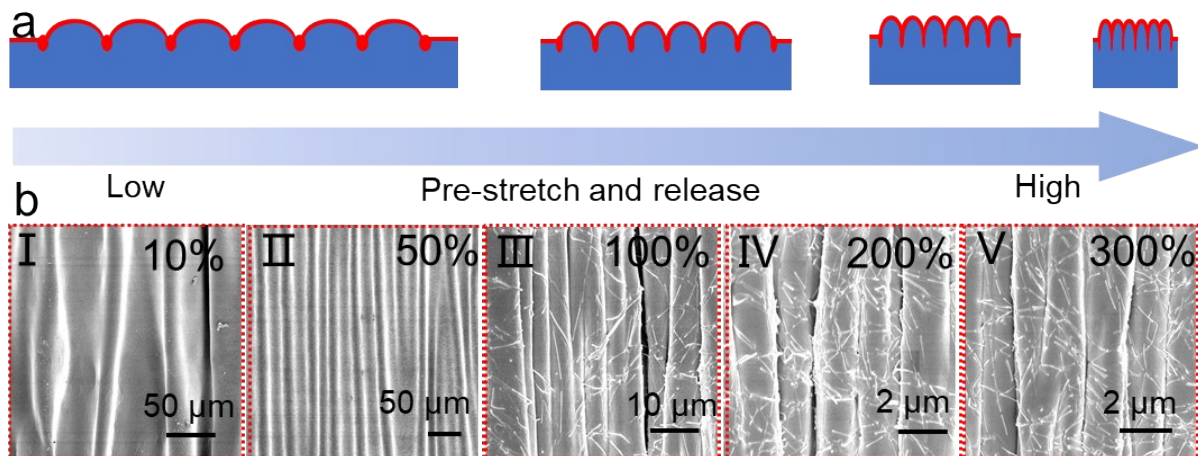


Fig. S2 Schematic diagram of the surface wrinkle morphology of SUPS with different pre-stretch degrees (a) and corresponding SEM images (b).

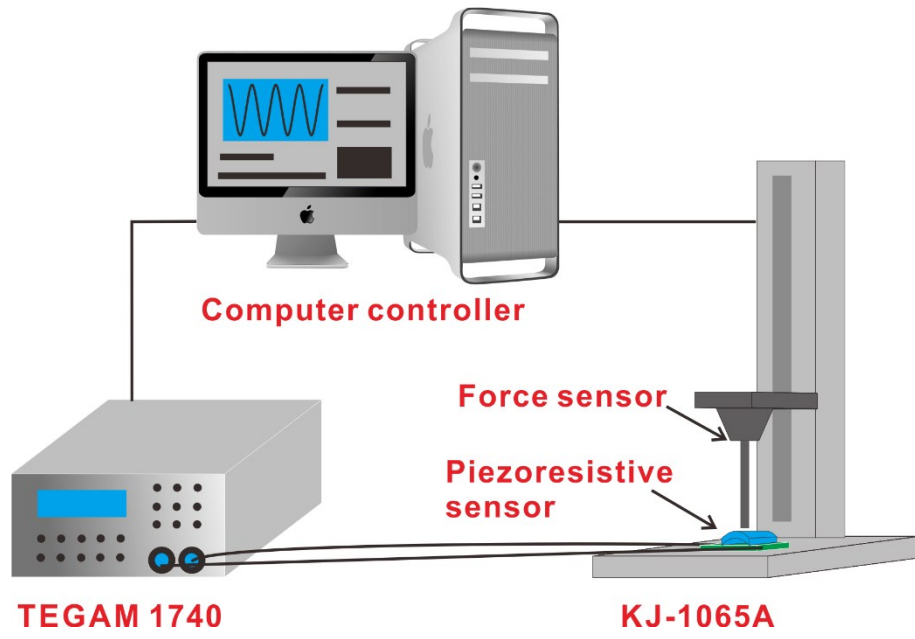


Fig. S3 Schematic of the resistance measurement

Table S1 Summary of sensitivity for the piezoresistive sensors prepared with different pre-stretching degrees

Piezoresistive sensors	Sensitivity in stage I (kPa ⁻¹)	Sensitivity in stage II (kPa ⁻¹)
100% pre-stretch	4.54	0.052
200% pre-stretch	4.54	0.25
300% pre-stretch	4.54	0.55