

Figure 1. The effect of increasing amount of LiCl on the Pybpa fluorescence. The Fluorescence intensity at 397 nm is plotted against the molar concentration of LiCl.

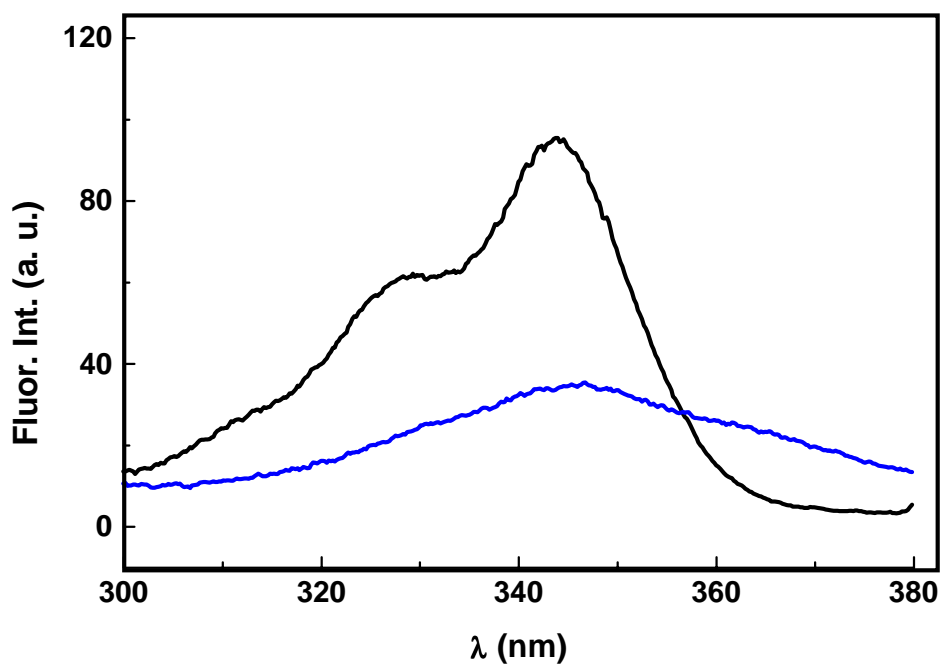


Figure 2. The excitation spectra for $\lambda_{Em} = 397$ nm (in black) and $\lambda_{Em} = 450$ nm (in blue).

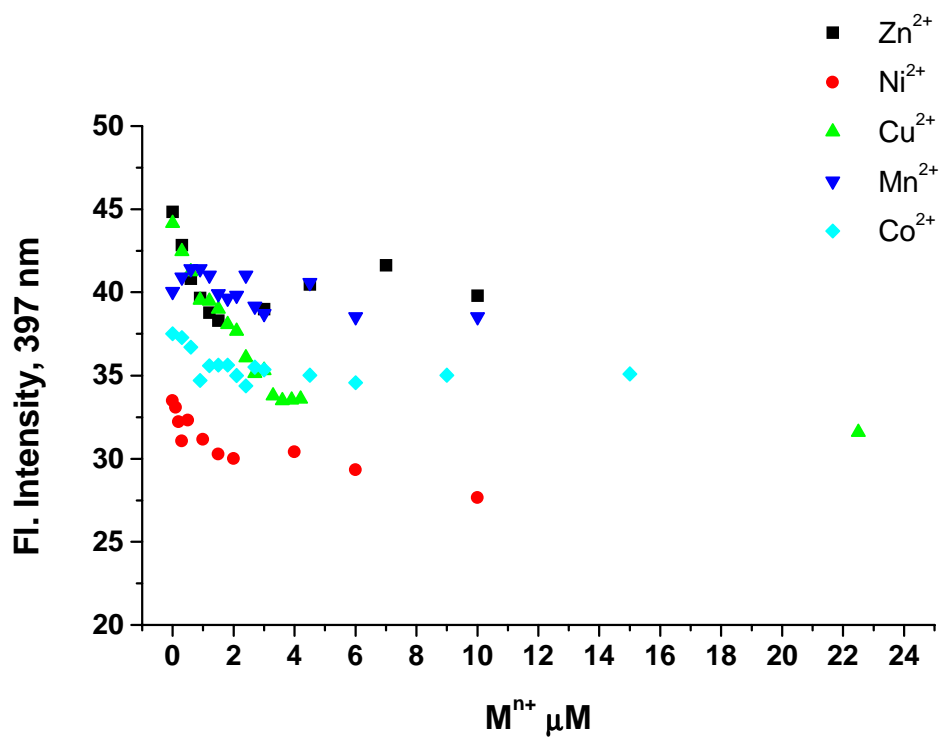


Figure 3. The effect of the addition of increasing amount of ZnCl₂, NiCl₂, CuCl₂, MnCl₂ and CoCl₂ on Pybpa fluorescence in water. Here, the emission intensity at 397 nm is plotted against the metal ion concentration.