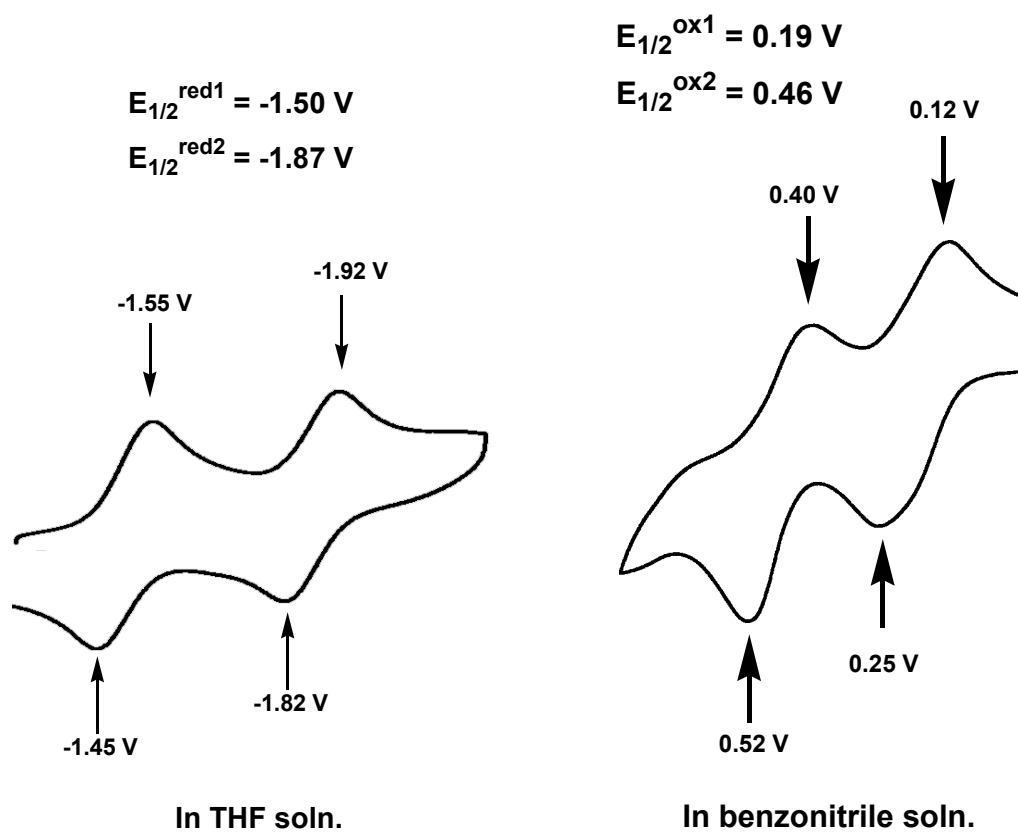
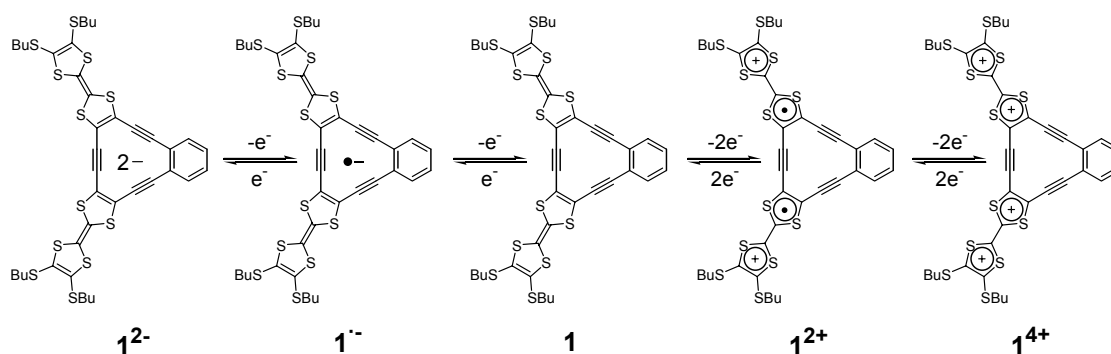


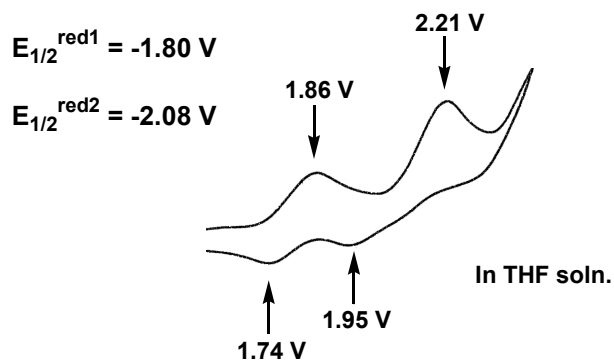
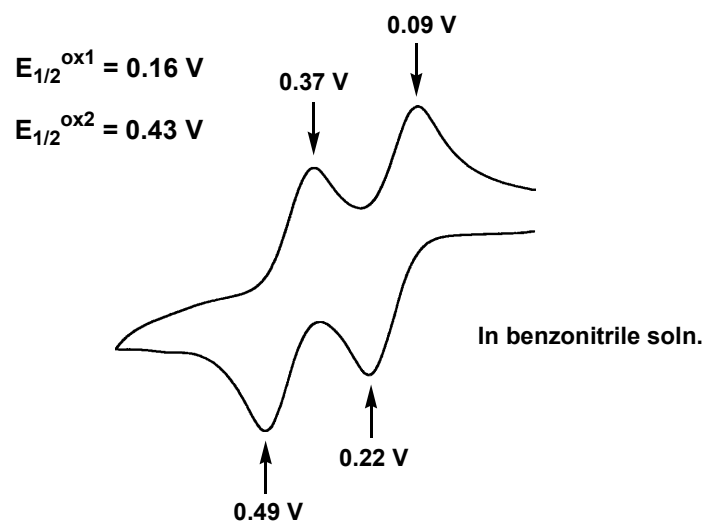
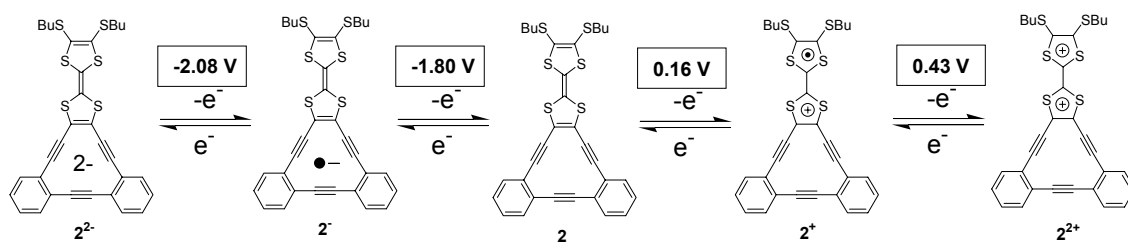
The cyclic voltammograms of compound **1**



Conditions: 0.1 M Bu_4NClO_4 , Ag/Ag^+ reference electrode, Pt counter electrode, 100 mV sec^{-1} ;

potentials referred to Fc/Fc^+ . In benzonitrile with Pt working electrode. In THF with glassy carbon working electrode.

The cyclic voltammograms of compound **2**

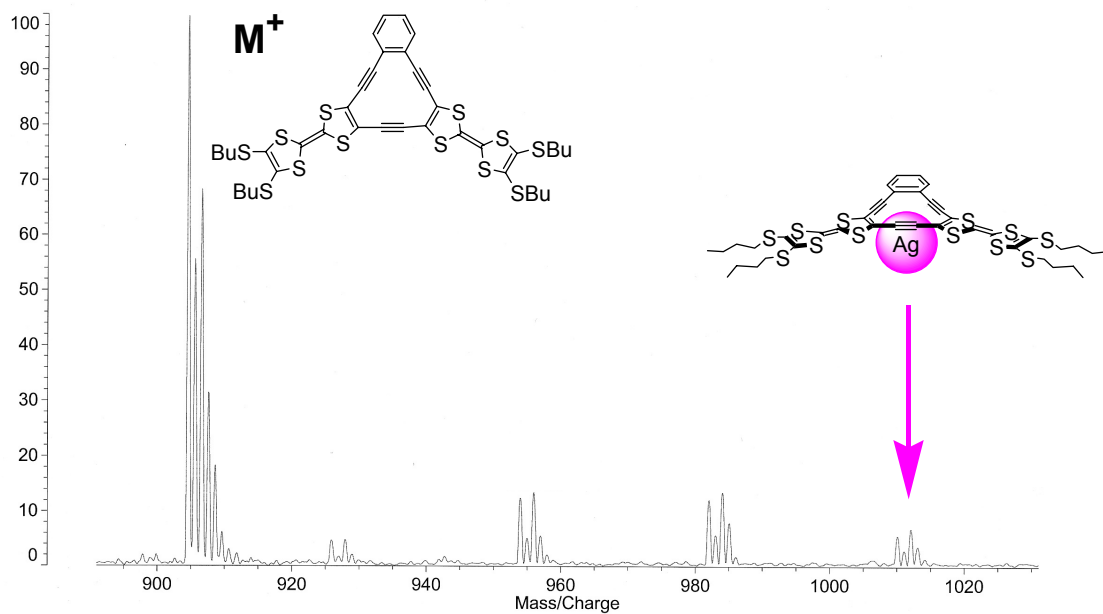


Conditions: $0.1 \text{ M Bu}_4\text{NClO}_4$, Ag/Ag^+ reference electrode, Pt counter electrode, 100 mV sec^{-1} ;

potentials referred to Fc/Fc^+ . In benzonitrile with Pt working electrode. In THF with glassy carbon working electrode.

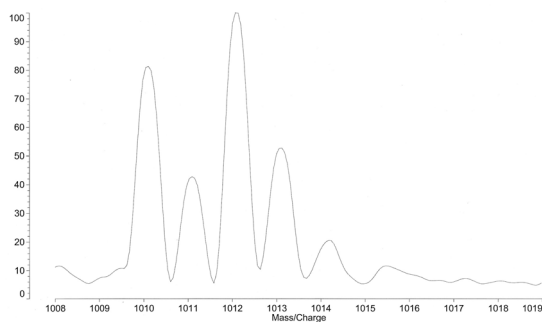
LDI-TOF MS of **1** with AgBF_4

%Int. 111 mV[sum= 111 mV] Profiles 1-1 Smooth Av 10 -Baseline 100



Expansion

%Int. 7.6 mV[sum= 8 mV] Profiles 1-1 Smooth Av 10 -Baseline 100



Calculation

Molecular formula: C₄₀H₄₀S₁₂Ag Resolution: 10000 at 50%

