

Current Data Parameters
 NAME 11C-146-PA
 EXPNO 1
 PROCNO 1

F2 - Acquisition Parameter

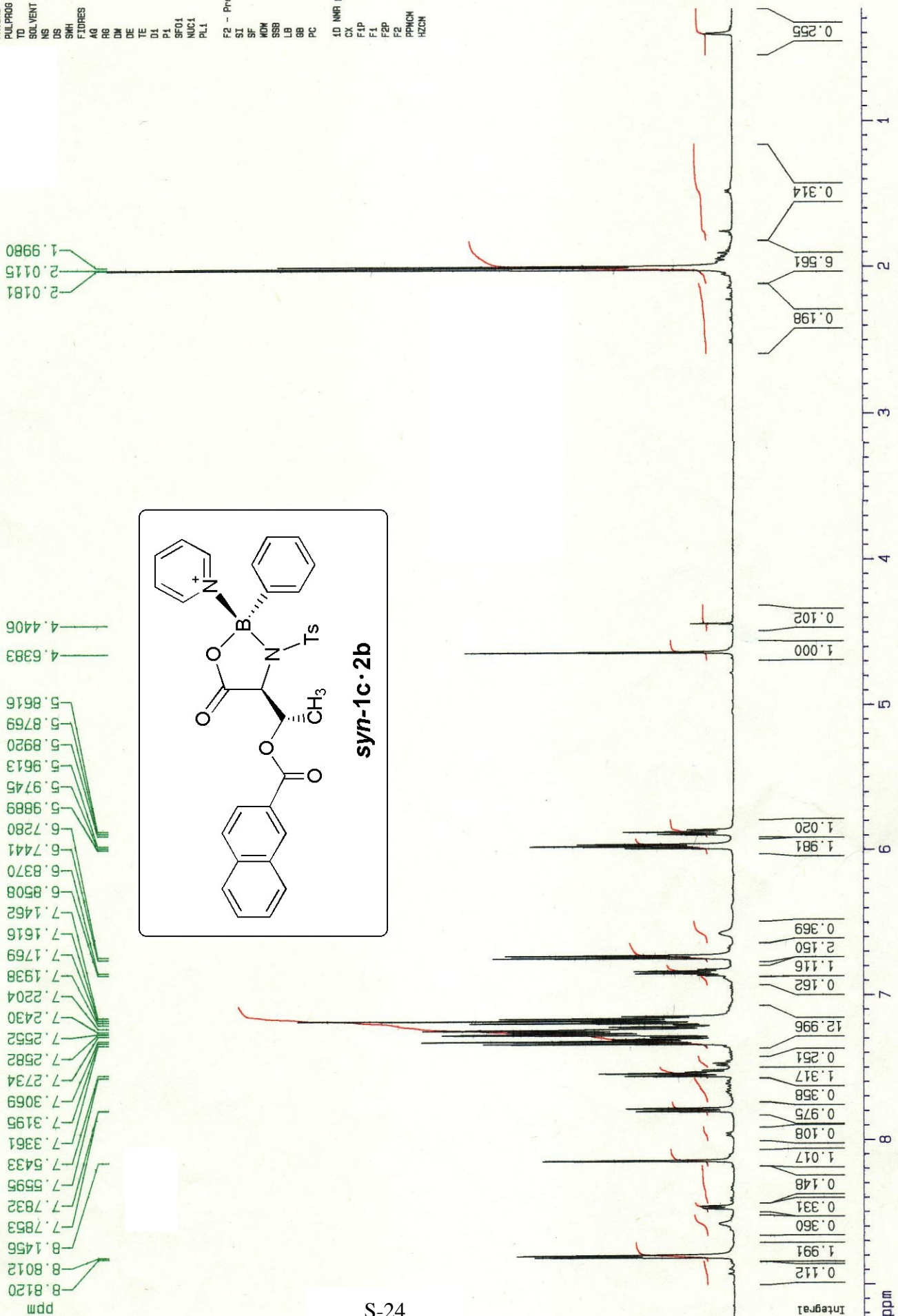
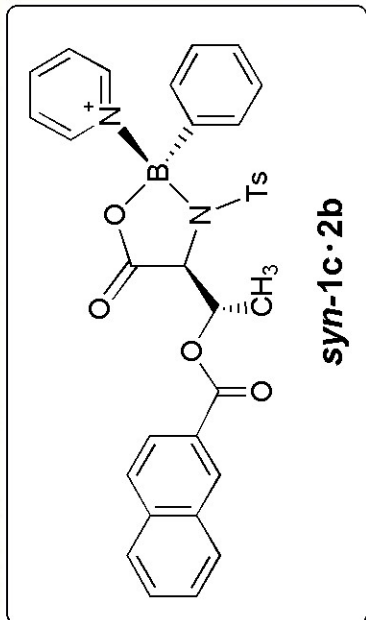
Date_ 20021024
 Time 17.36
 INSTRUM DRX500
 PULPROG zg30
 TD 32768
 SOLVENT CDCl3
 NS 16
 DS 2
 SWH 10330.578 Hz
 FIDRES 0.316264 Hz
 AQ 1.5882342 sec
 RG 203.2
 DM 48.400 us
 DE 6.00 us
 TE 300.0 K
 D1 1.00000000 sec
 P1 9.30 us
 RF01 500.1330885 MHz
 NUC1 1H
 PL1 -6.00 dB

F2 - Processing parameters
 SI 16384
 SF 500.1300000 MHz
 MDW 0
 SSB 0
 LB 0.30 Hz
 GB 0
 PC 1.00

1D NMR plot parameters
 CX 25.00 cm
 F1P 9.231 pp
 F1 4616.90 Hz
 F2P 0.231 pp
 F2 115.73 Hz
 PRMCH 0.36000 pp
 HZCN 160.04680 Hz

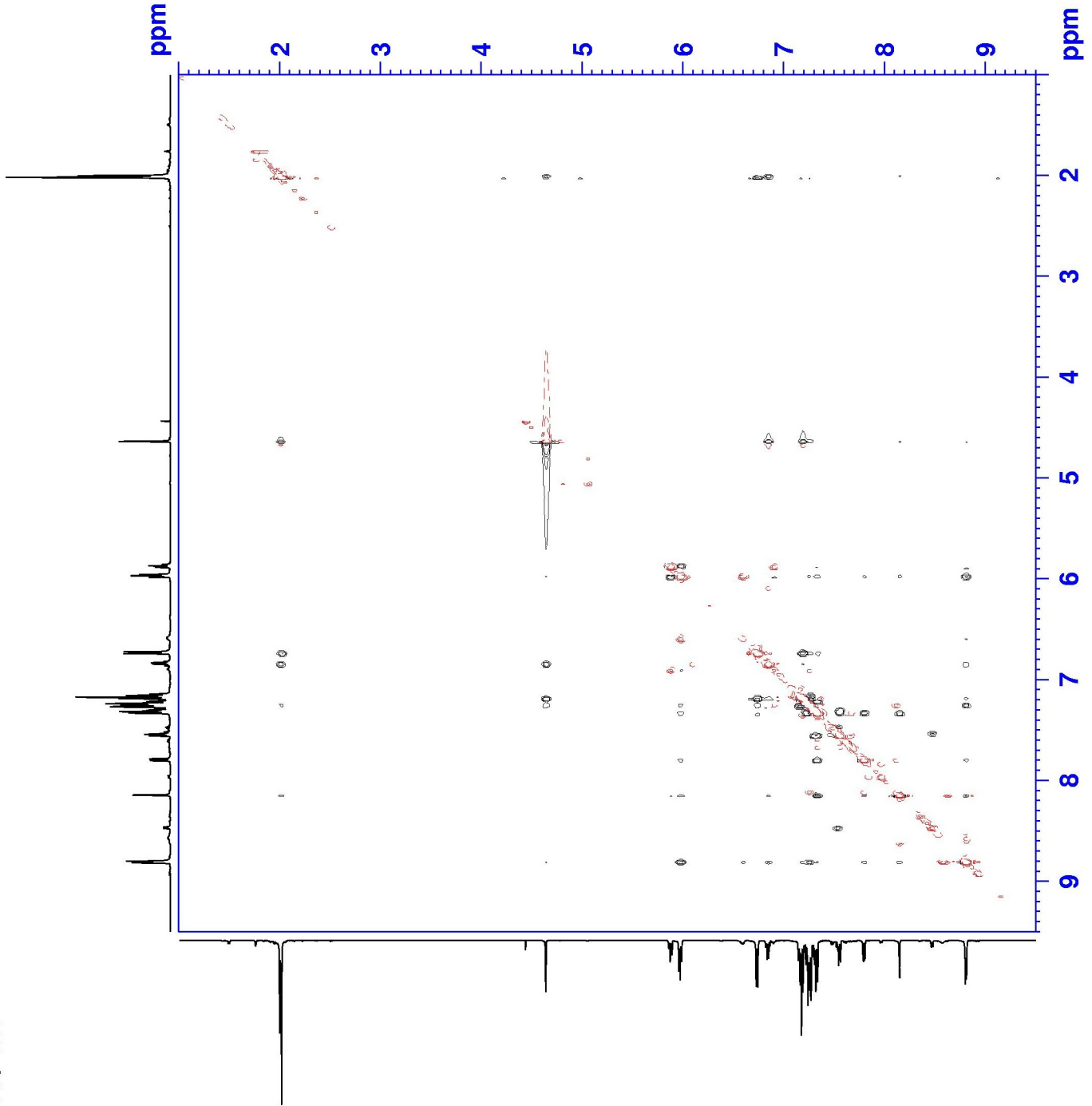
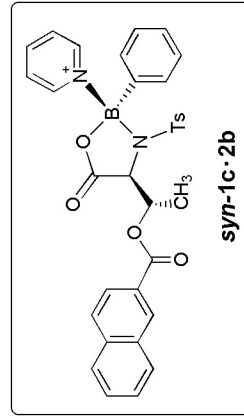
1.9980
 2.0115
 2.0181

4.4406
 4.6383
 5.8616
 5.8769
 5.8920
 5.9613
 5.9745
 5.9889
 6.7280
 6.7441
 6.8370
 6.8508
 7.1462
 7.1616
 7.1769
 7.1938
 7.2204
 7.2430
 7.2552
 7.2582
 7.2734
 7.3069
 7.3195
 7.3361
 7.5433
 7.5595
 7.7832
 7.7853
 8.1456
 8.8012
 8.8120



Current Data Parameters
 NAME 11C-146-PB
 EXPNO 4
 PROCNO 1

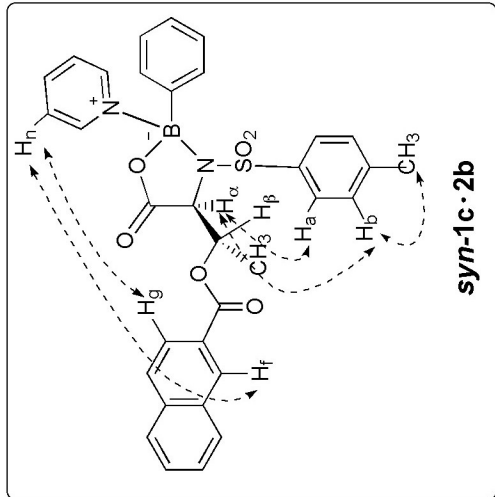
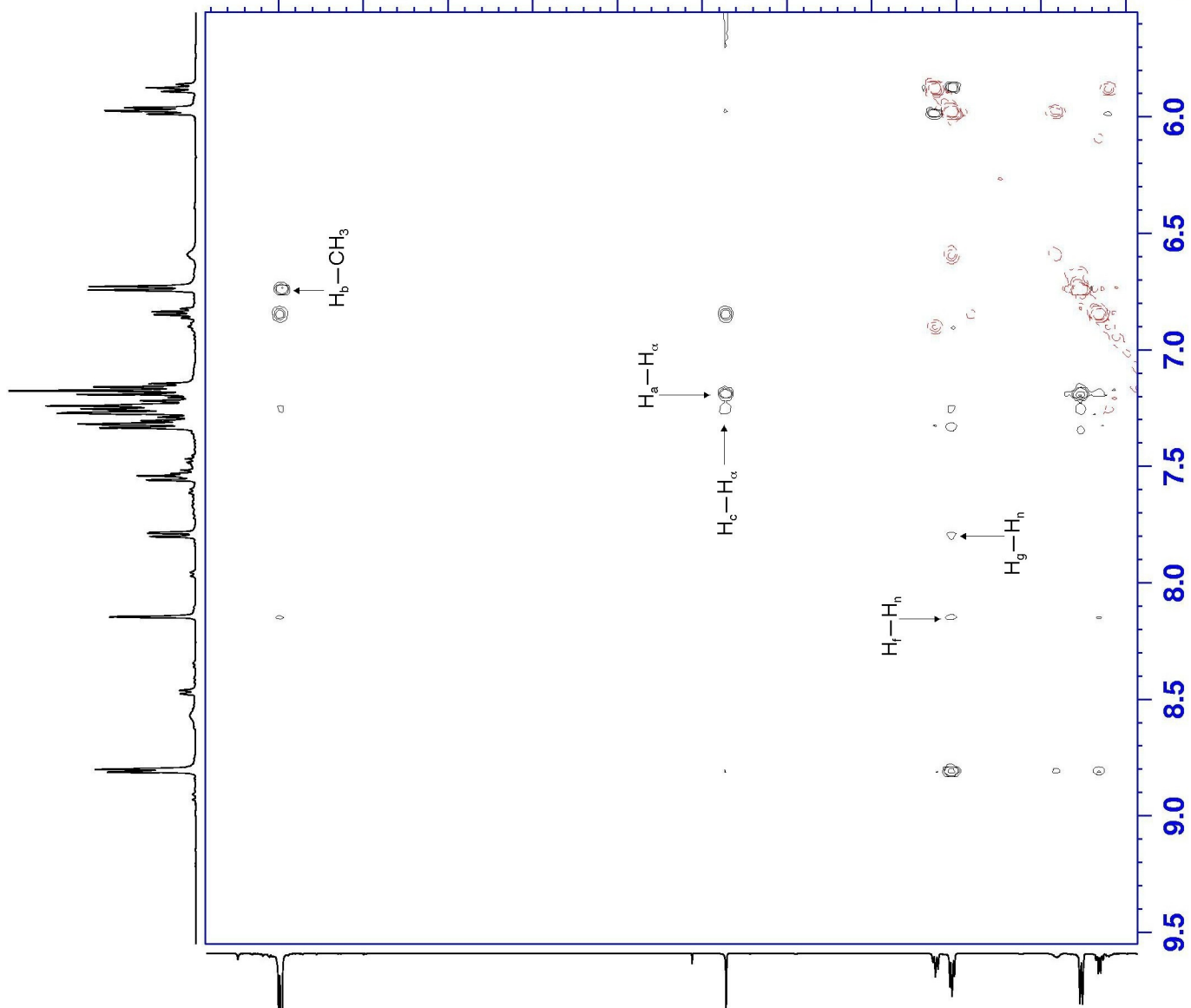
F2 - Acquisition Parameters
 Date_ 20021028
 Time 20.55
 INSTRUM DRX500
 PROBHD 5 mm Multinu
 PULPROG noesytp
 TD 2048
 SOLVENT C6D6
 NS 16
 DS 4
 SWH 5952.381 Hz
 FIDRES 2.906436 Hz
 AQ 0.1720820 sec
 RG 114
 DW 84.000 usec
 DE 6.00 usec
 TE 300.0 K
 d0 0.0000300 sec
 D1 2.00819206 sec
 P1 9.30 usec
 SFOL 500.1323183 MHz
 NUC1 1H
 PL1 -6.00 dB
 D8 2.00000000 sec
 IN0 0.00008400 sec

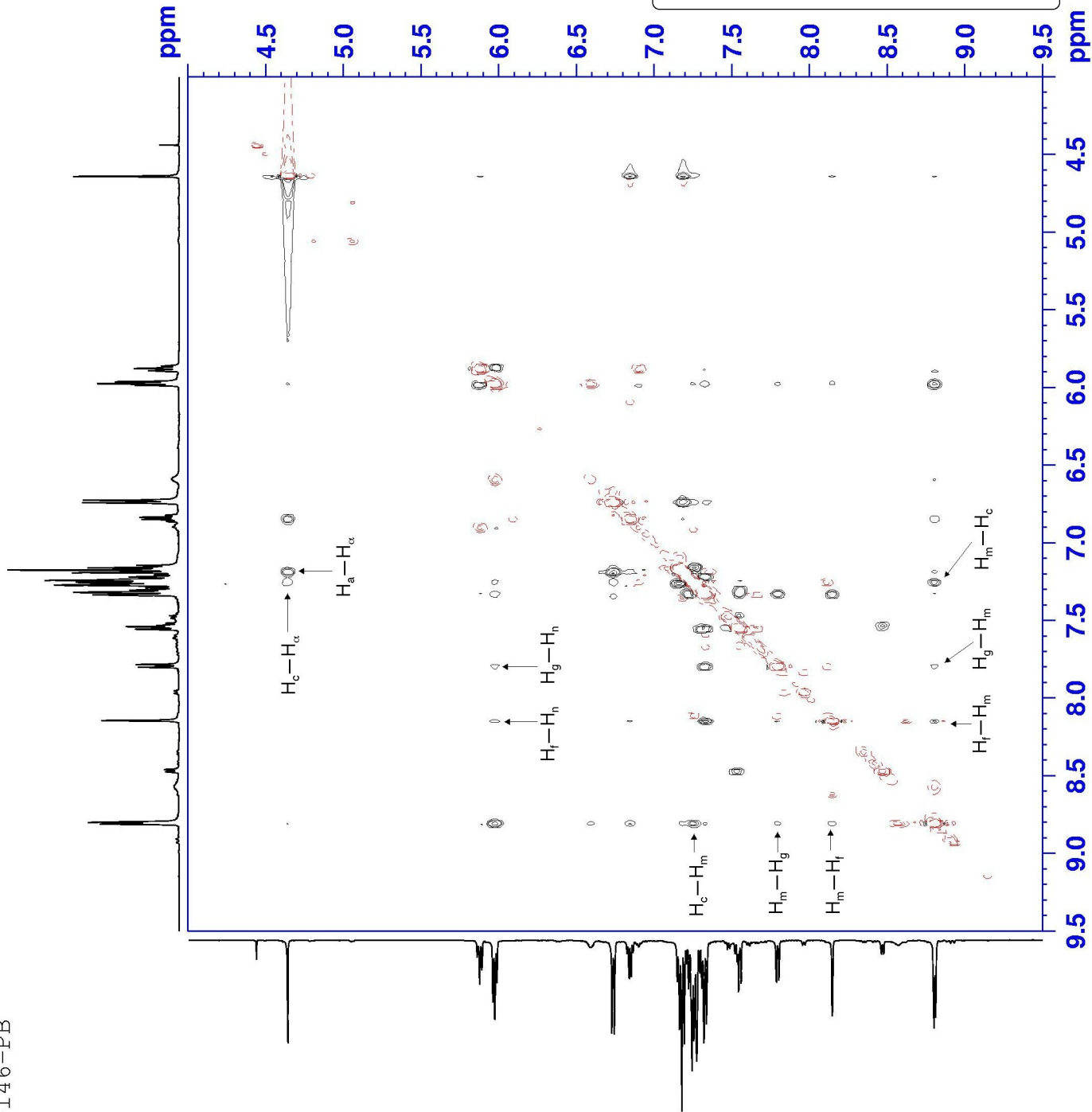


Current Data Parameters
 NAME 11C-146-PB
 EXPNO 4
 PROCNO 1

F2 - Acquisition Parameters
 Date_ 20021028
 Time 20.55
 INSTRUM DRX500
 PROBHD 5 mm Multinu
 PULPROG noesytp
 TD 2048
 SOLVENT C6D6
 NS 16
 DS 4
 SWH 5952.381 Hz
 FIDRES 2.906436 Hz
 AQ 0.1720820 sec
 RG 114
 DW 84.000 usec
 DE 6.00 usec
 TE 300.0 K
 d0 0.00000300 sec
 D1 2.00819206 sec
 P1 9.30 usec
 SFO1 500.1323183 MHz
 NUC1 1H
 PL1 -6.00 dB
 D8 2.00000000 sec
 IN0 0.00008400 sec

ppm 2.0 2.5 3.0 3.5 4.0 4.5 5.0 5.5 6.0 6.5 7.0 ppm





Current Data Parameters
 NAME 11C-146-PB
 EXPNO 4
 PROCNO 1

F2 - Acquisition Parameters

Date_ 20021028
 Time 20.55
 INSTRUM DRX500
 PROBHD 5 mm Multinu
 PULPROG noesytp
 TD 2048
 SOLVENT C6D6
 NS 16
 DS 4
 SWH 5952.381 Hz
 FIDRES 2.906436 Hz
 AQ 0.1720820 sec
 RG 114
 DW 84.000 usec
 DE 6.00 usec
 TE 300.0 K
 d0 0.00000300 sec
 D1 2.00819206 sec
 P1 9.30 usec
 SFO1 500.1323183 MHz
 NUC1 1H
 PL1 -6.00 dB
 D8 2.00000000 sec
 IN0 0.00008400 sec

