

Electronic Supplementary Information

**Single-Walled Carbon Nanotubes Displaying Multivalent
Ligands for Capturing Pathogens**

(MS# B415015E)

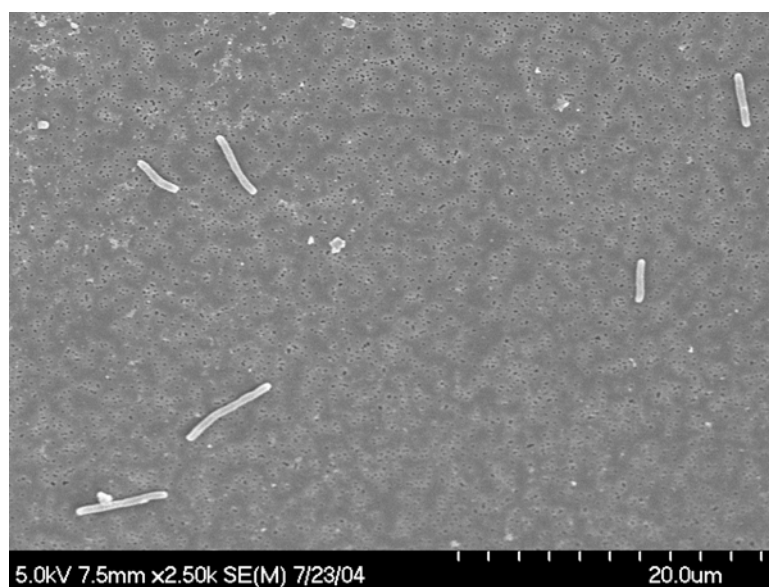


Figure S1. SEM image from the control experiment with *E. coli* O157:H7 and BSA-functionalized SWNTs. Other experimental procedure and conditions were kept the same.

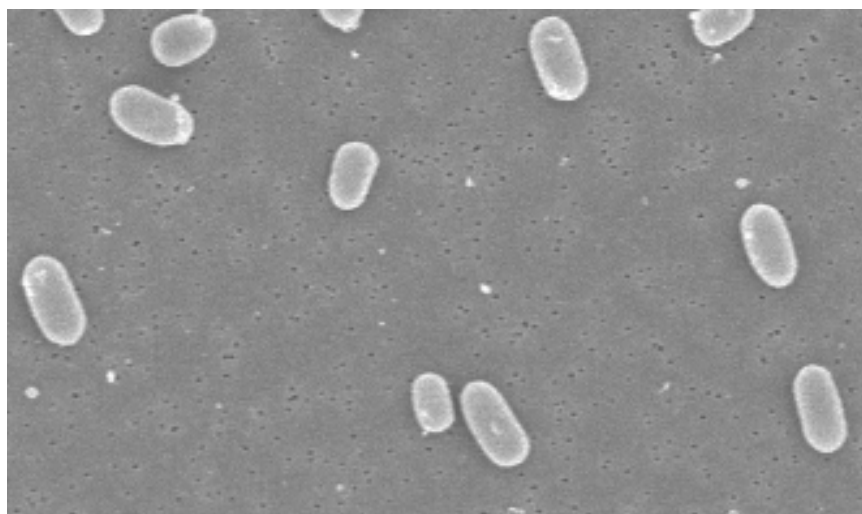
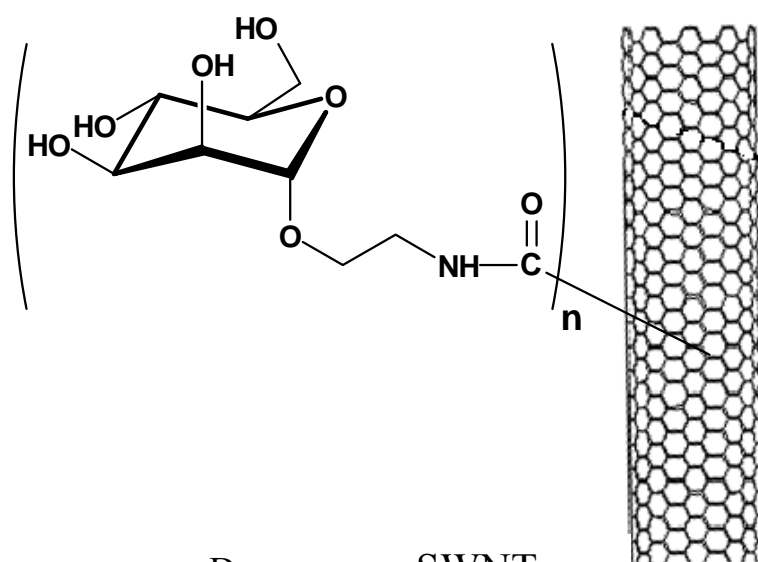


Figure S2. SEM image from the control experiment with *E. coli* O157:H7 and α -D-mannose-SWNT. Other experimental procedure and conditions were kept the same.