

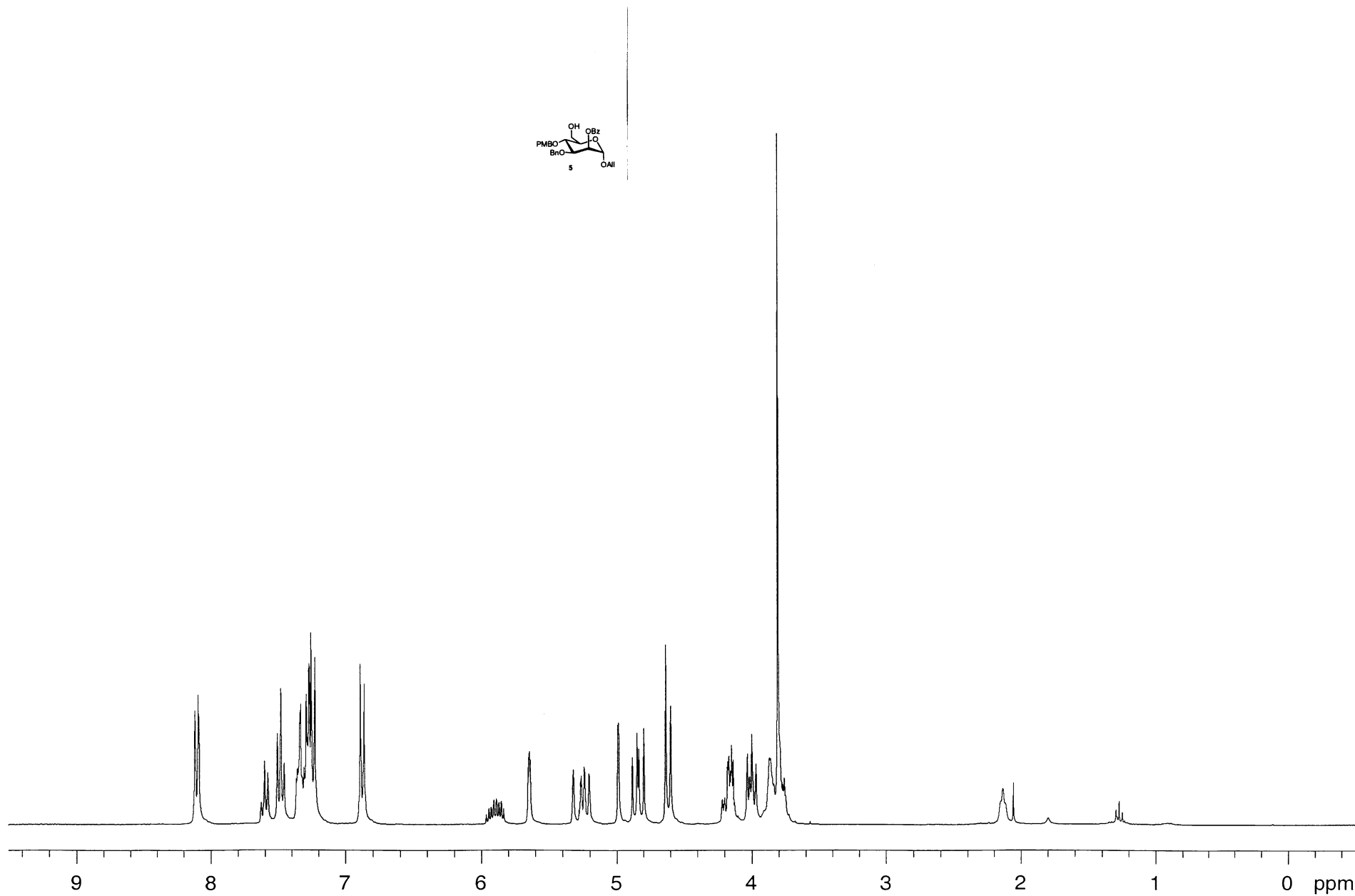
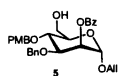
Supplementary Information

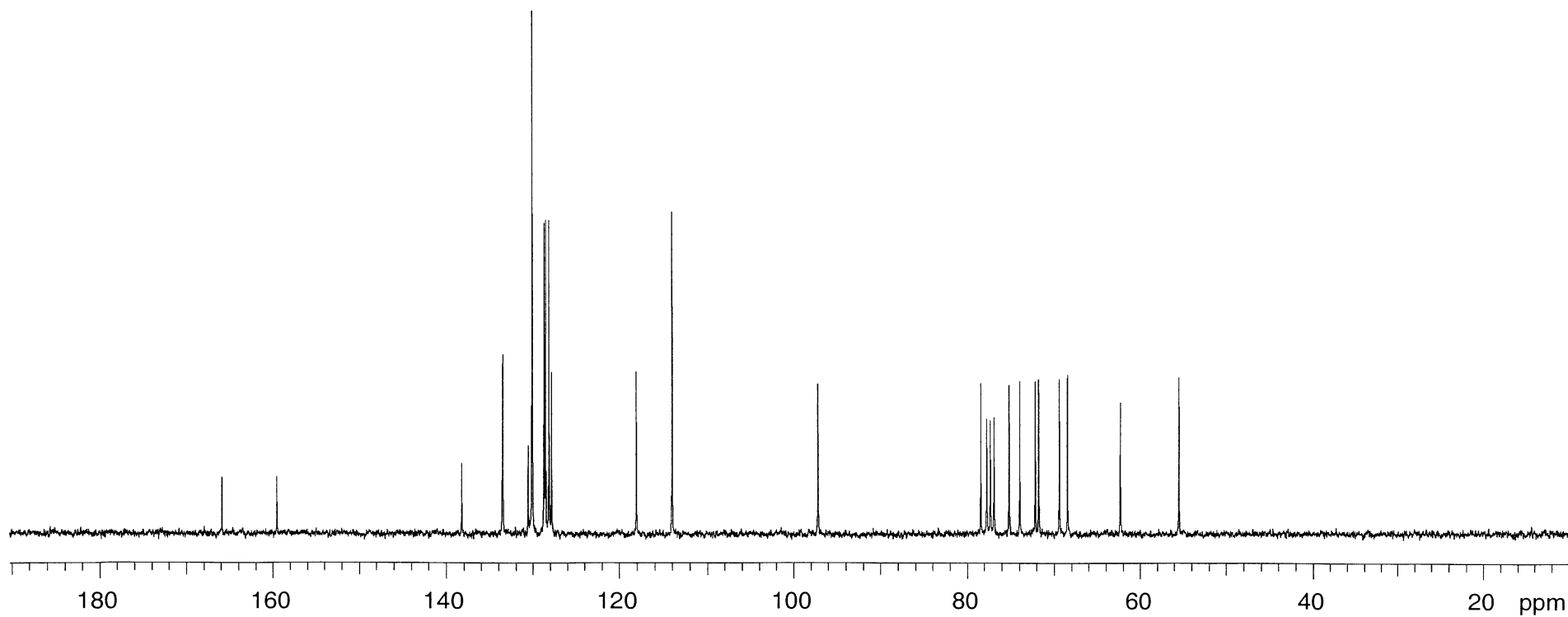
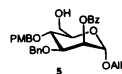
Total Synthesis of Fully Lipidated Glycosylphosphatidylinositol Anchors of *Toxoplasma gondii*

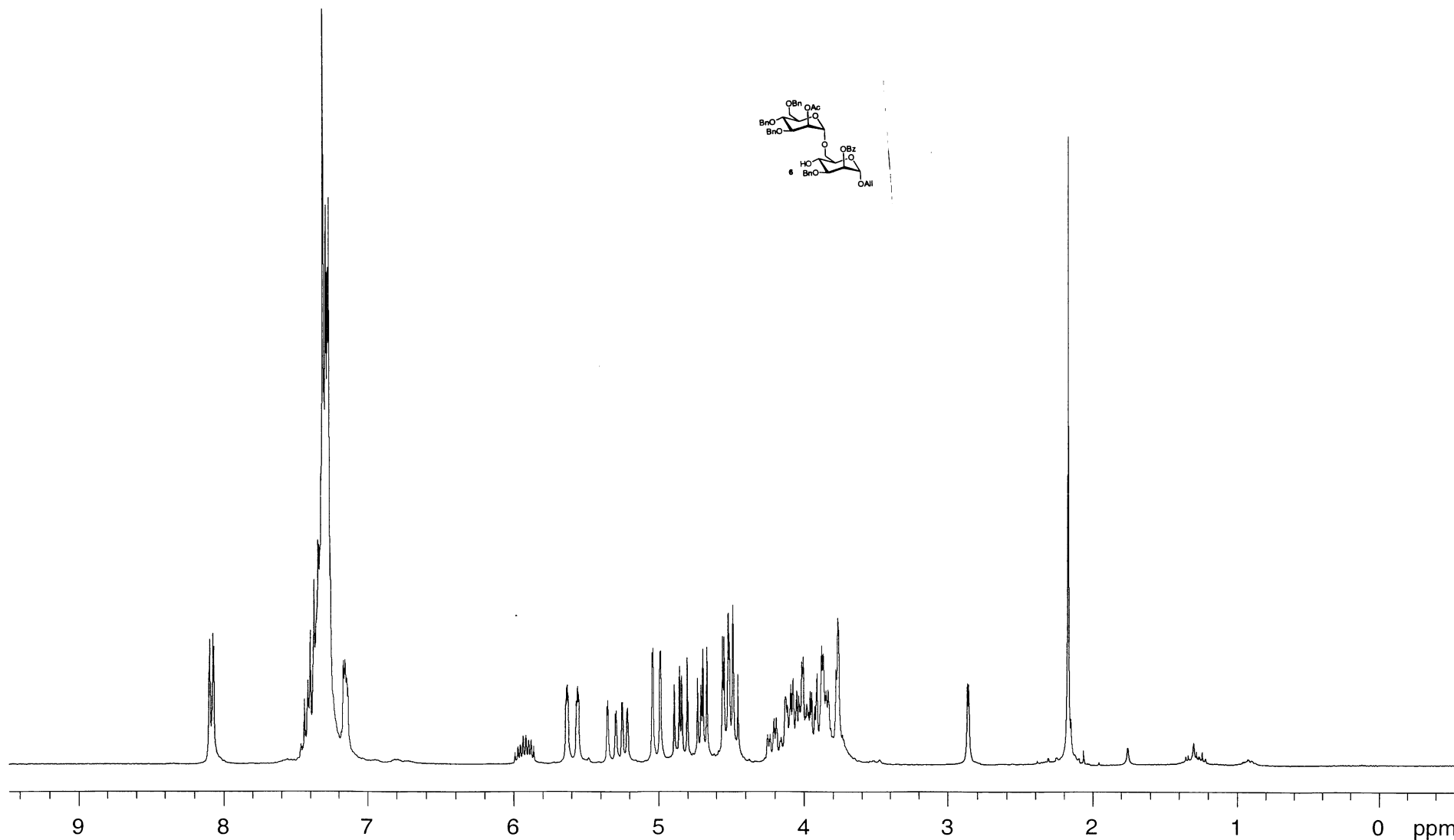
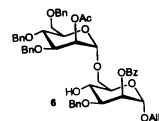
Yong-Uk Kwon, Xinyu Liu and Peter H. Seeberger*

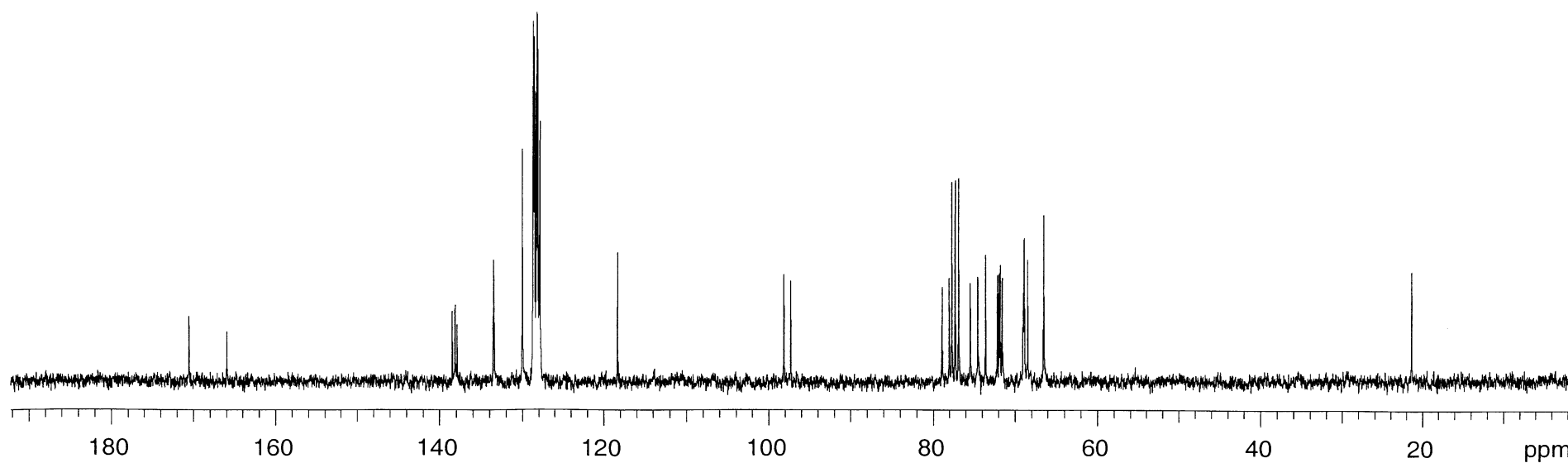
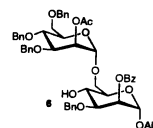
*Laboratorium für Organische Chemie, ETH Zürich, 8093 Zürich, Switzerland.
Tel: 41-1-633-3121; Fax: 41-1-633-1235; E-mail: seeberger@org.chem.ethz.ch*

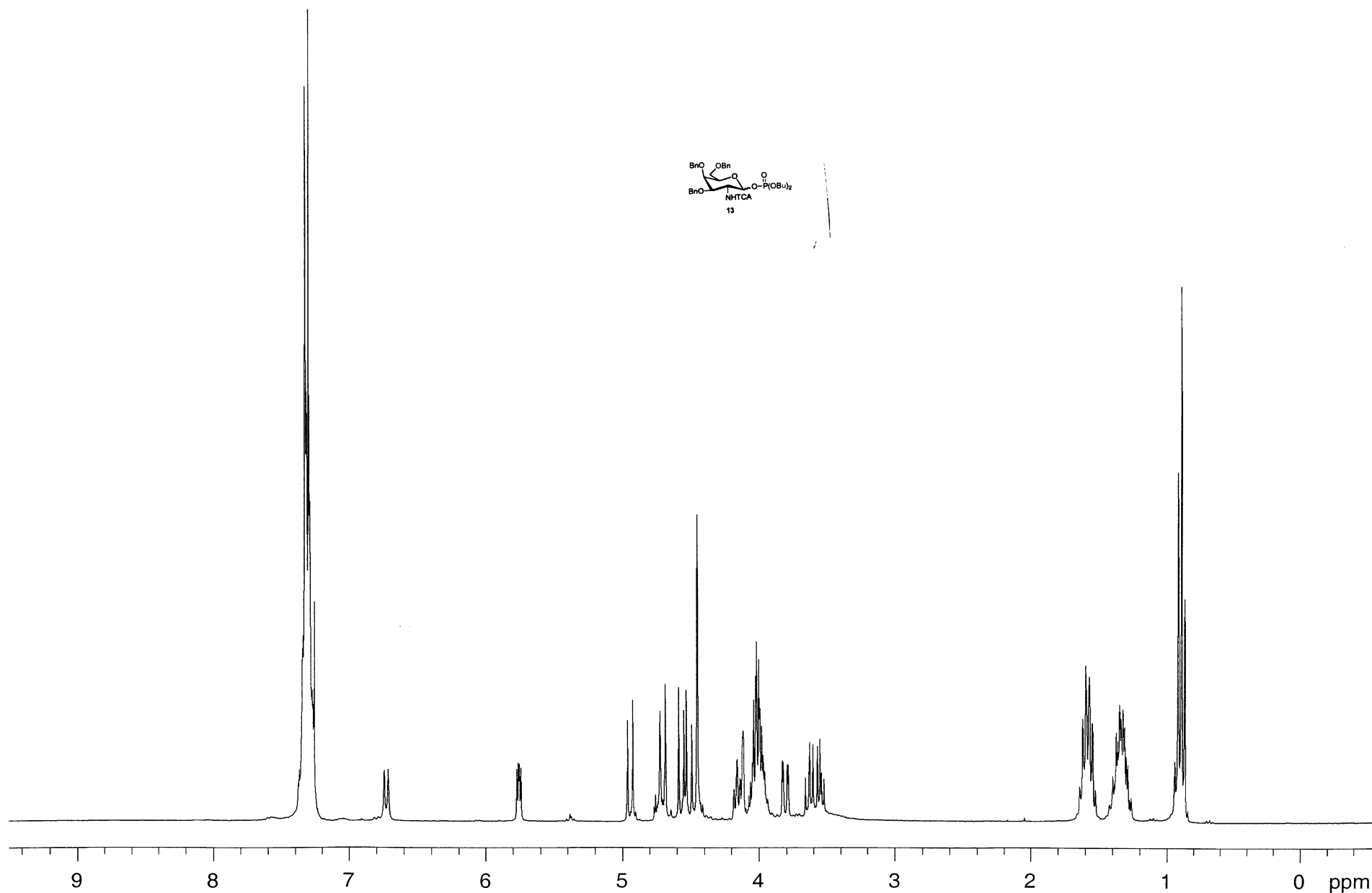
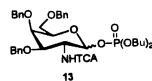
General Information: ^1H , ^{13}C and ^{31}P NMR spectra were recorded on a Varian Mercury 300 (300 MHz) or Varian Gemini 300 (300 MHz) spectrometer in CDCl_3 with chemical shifts referenced to internal standards CDCl_3 (7.26 ppm ^1H , 77.0 ppm ^{13}C) unless noted otherwise. ^{31}P spectra are reported in δ value relative to H_3PO_4 (0.0 ppm) as an external reference. High-resolution mass spectral analyses (ESI or MALDI) were performed by the MS-service at the Laboratorium für Organische Chemie at ETH Zürich.

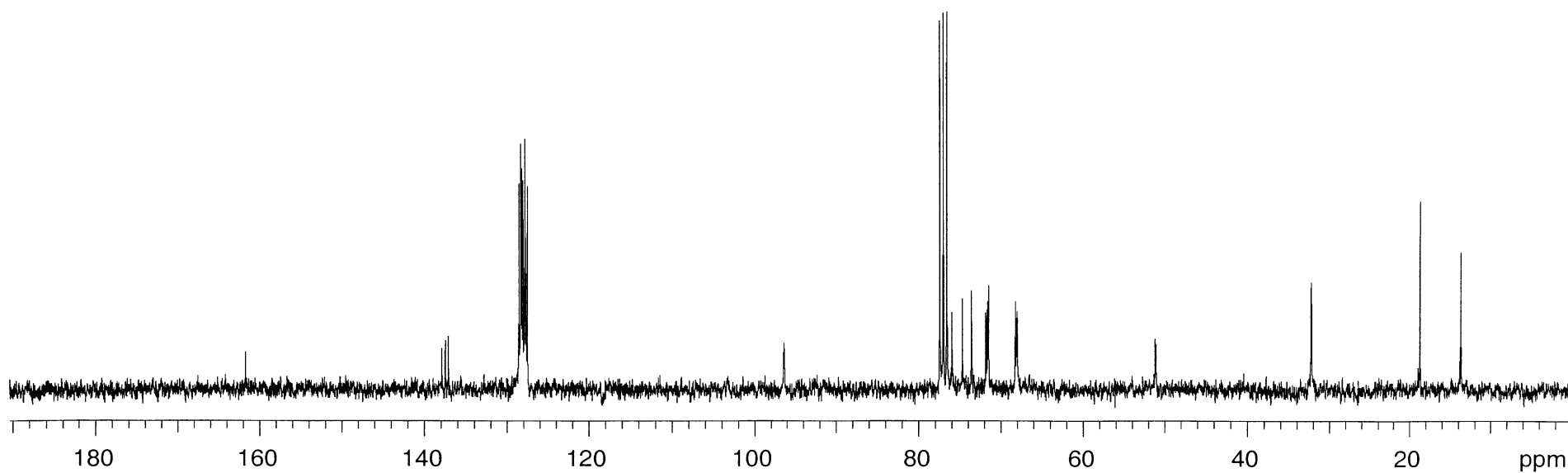
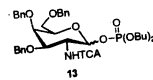


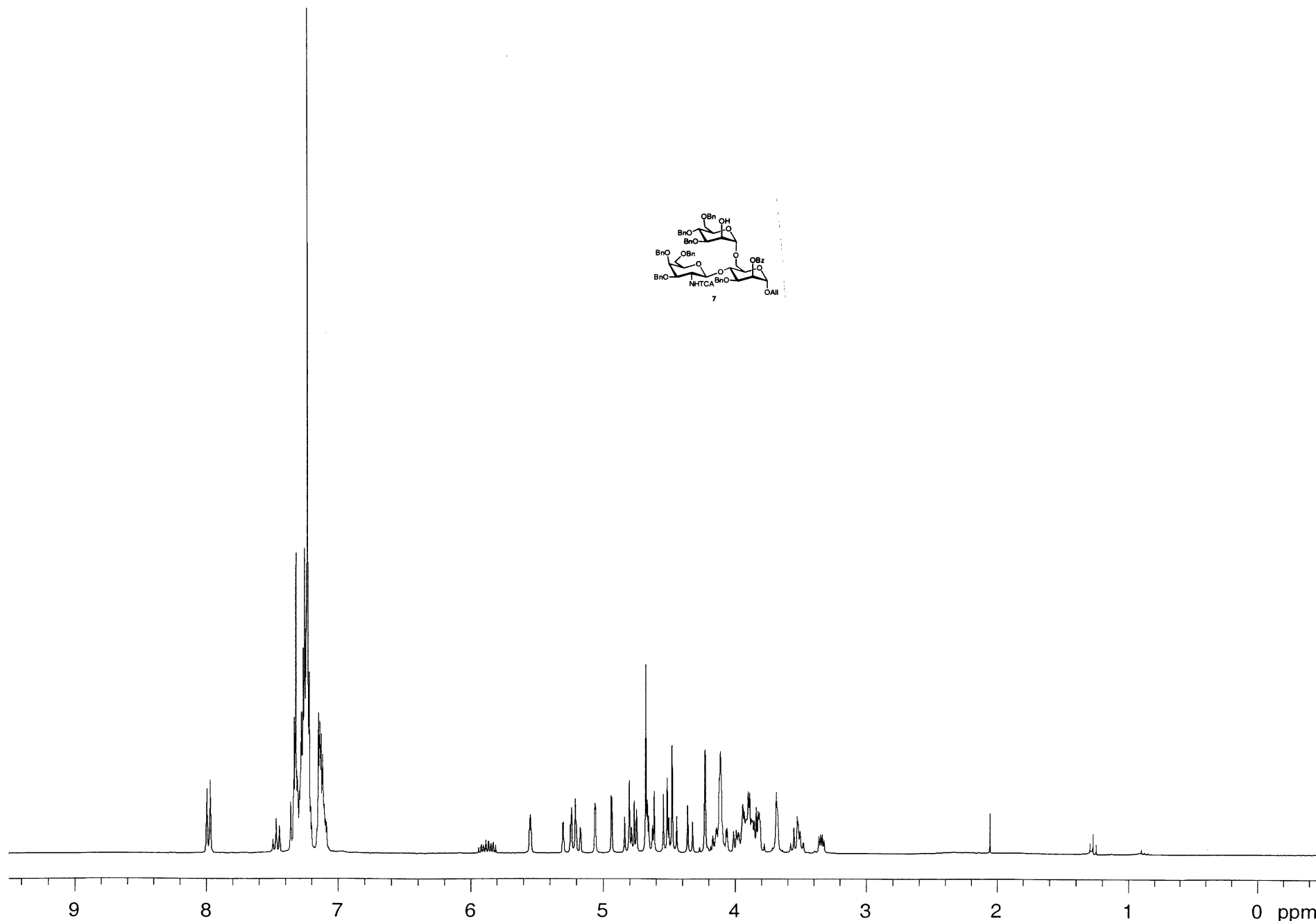
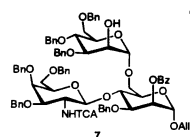


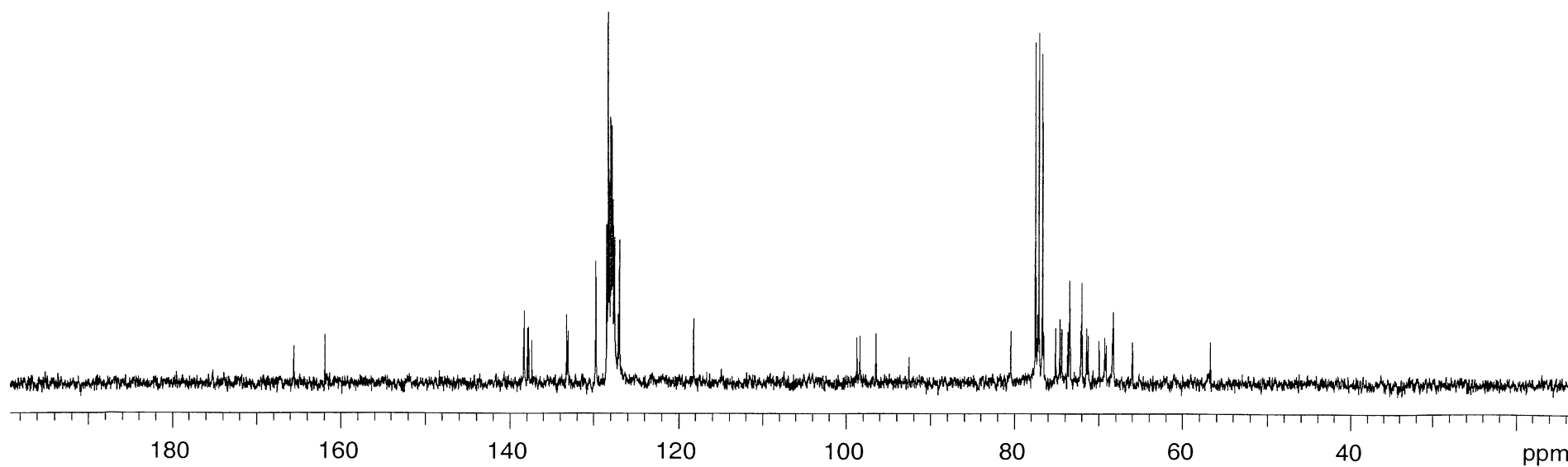
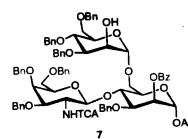


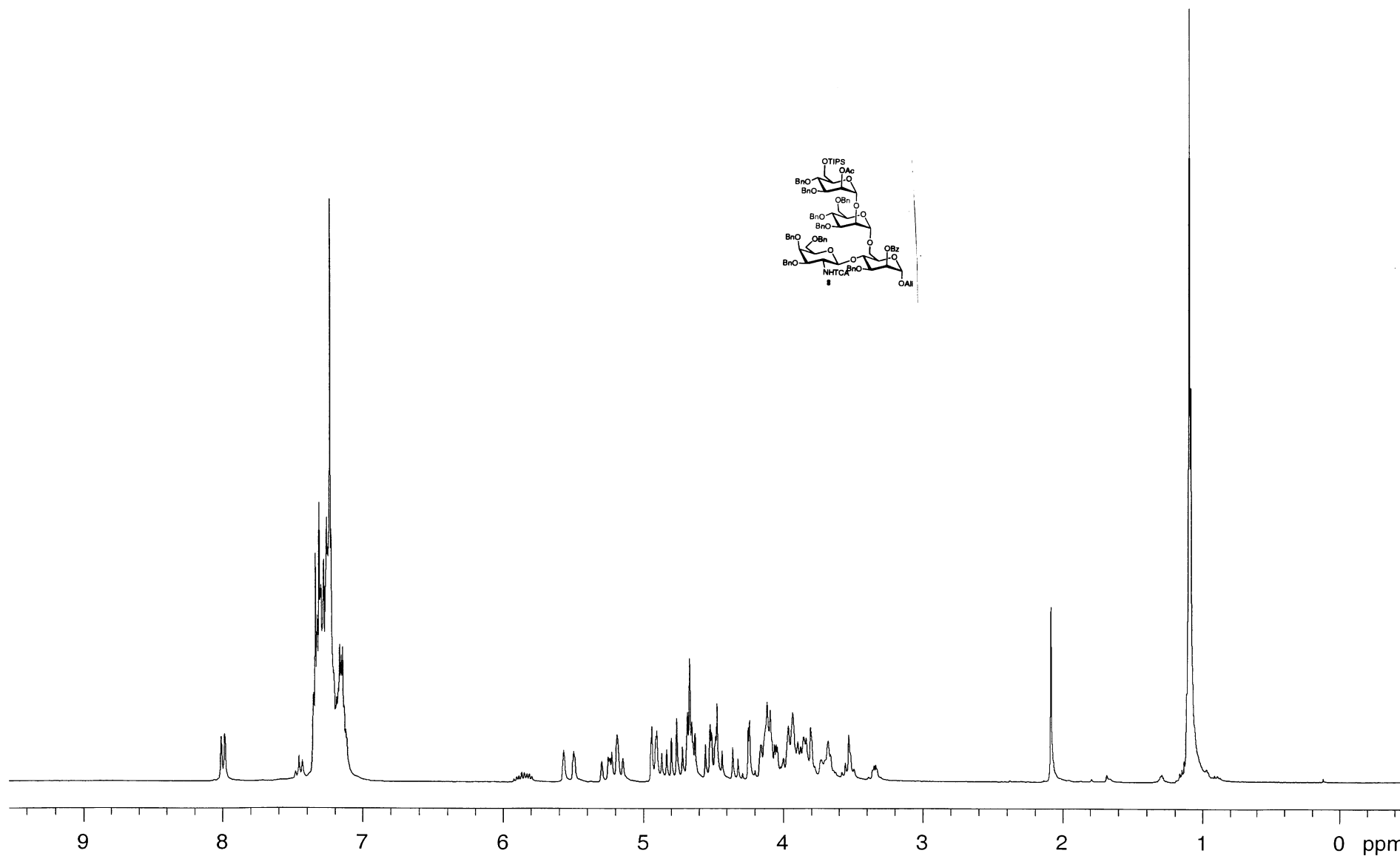


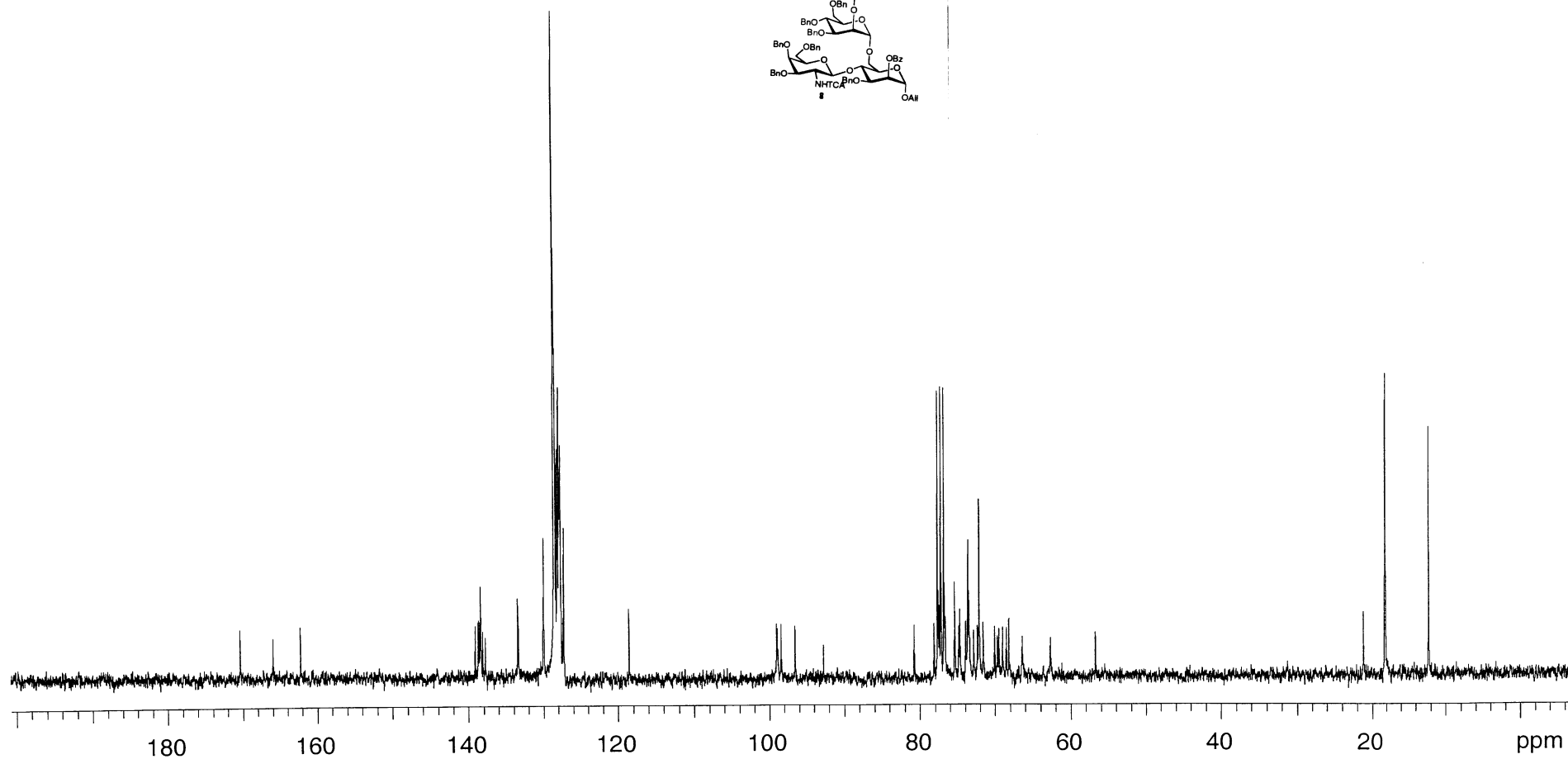
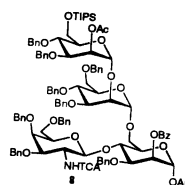


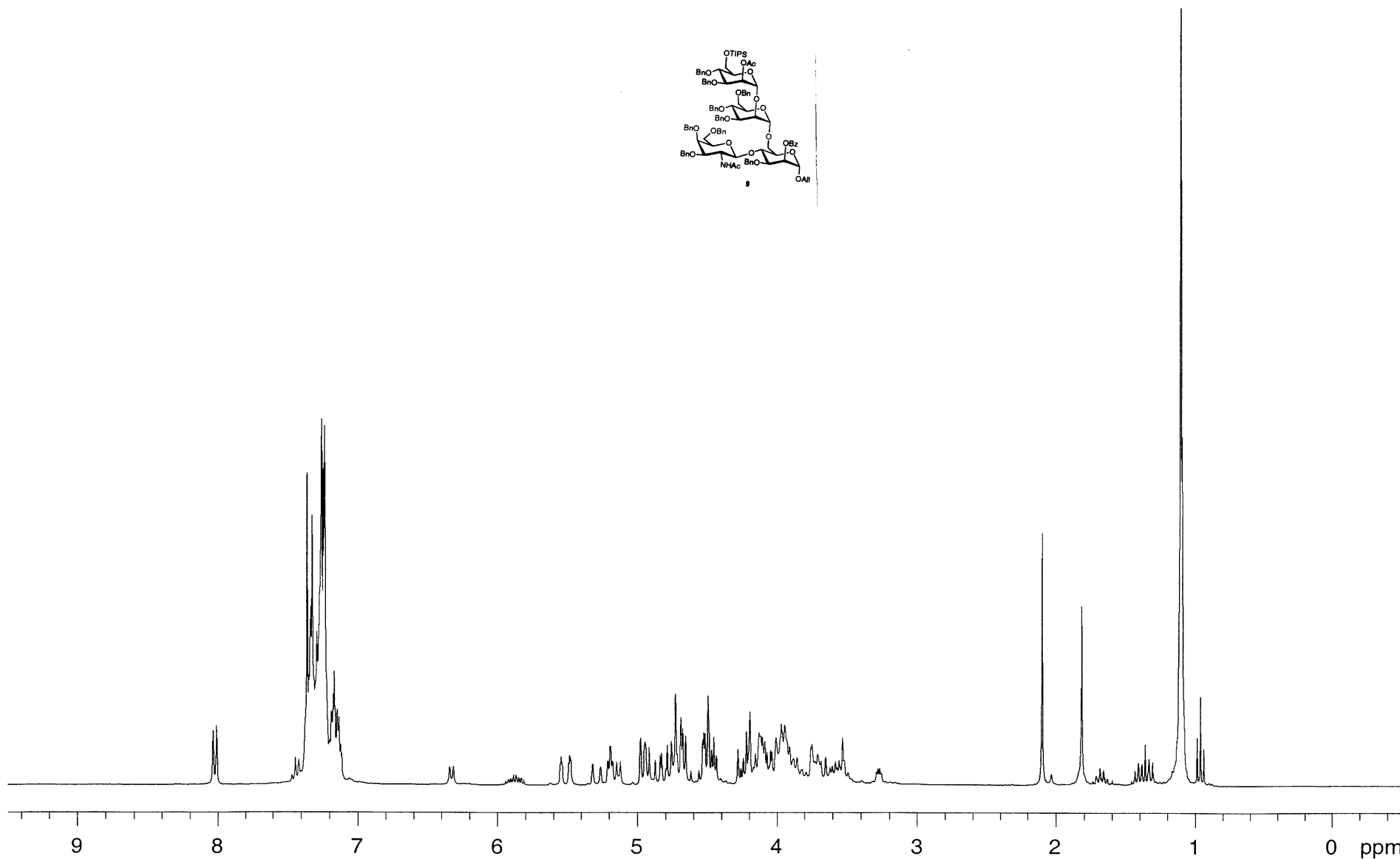
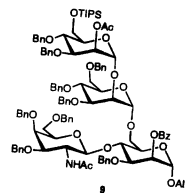


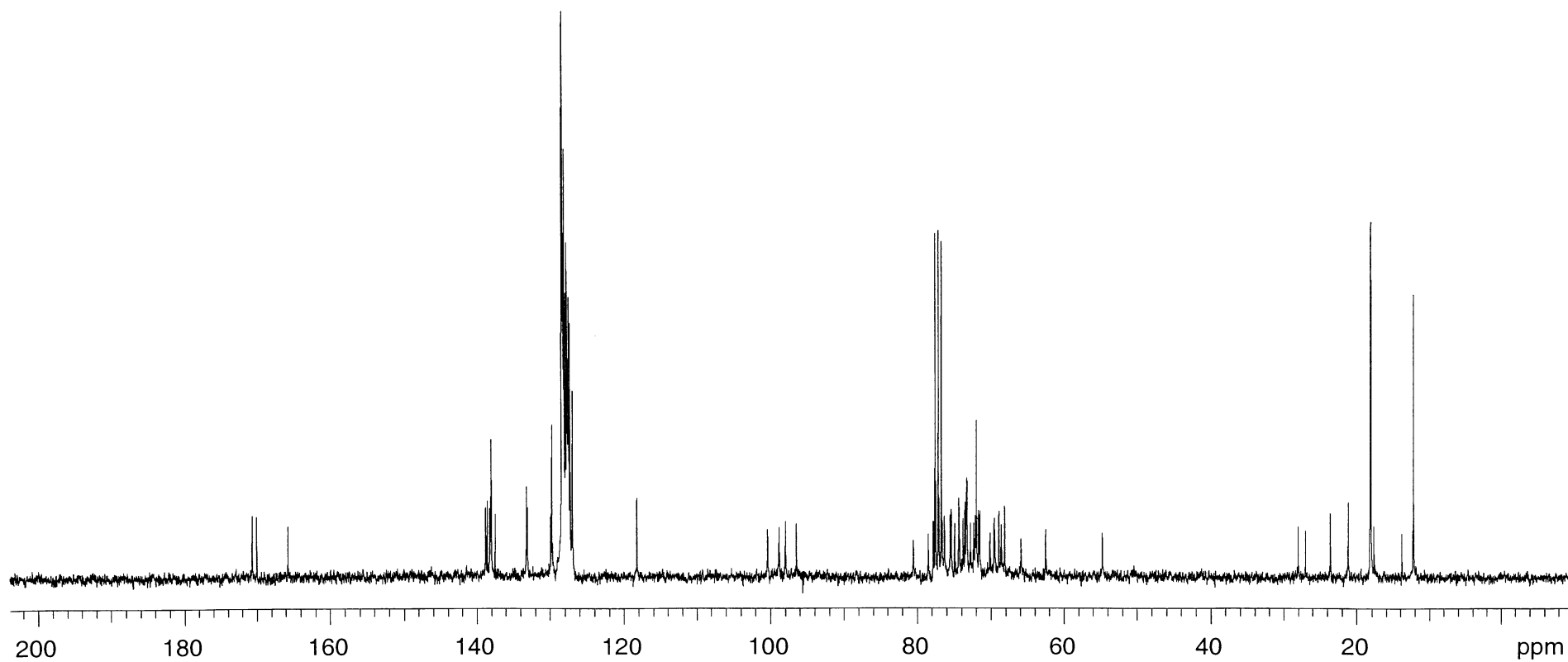
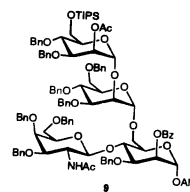


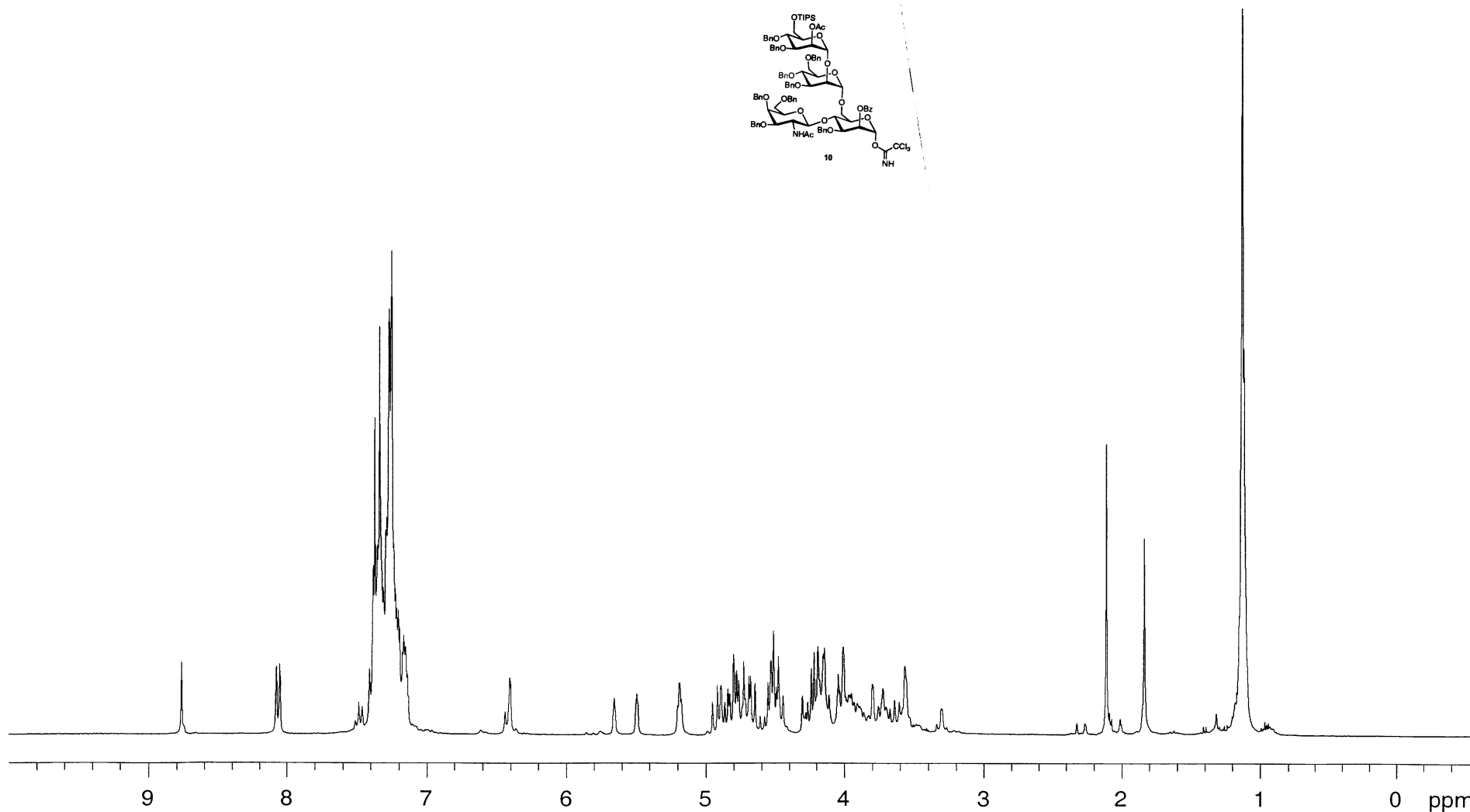
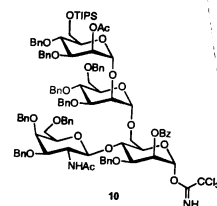


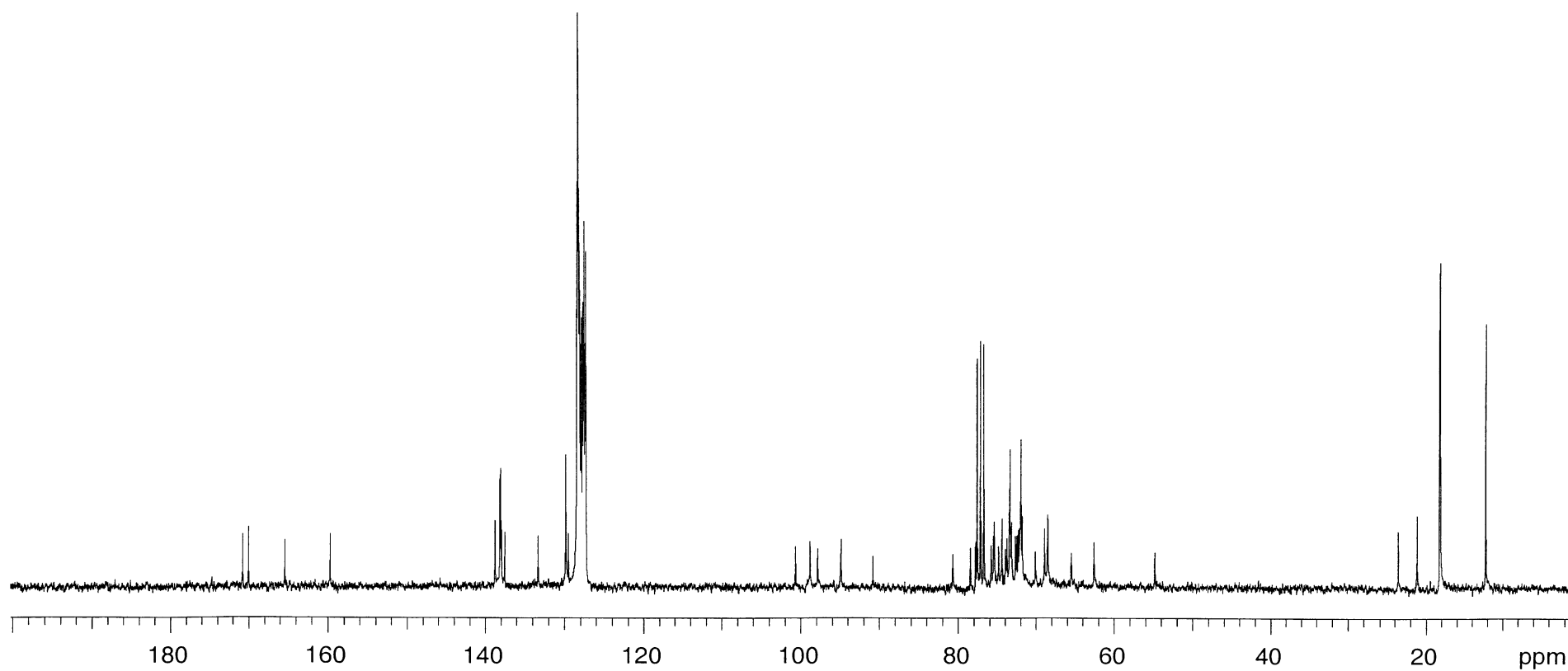
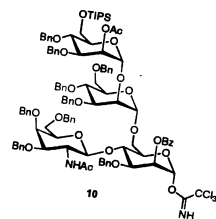


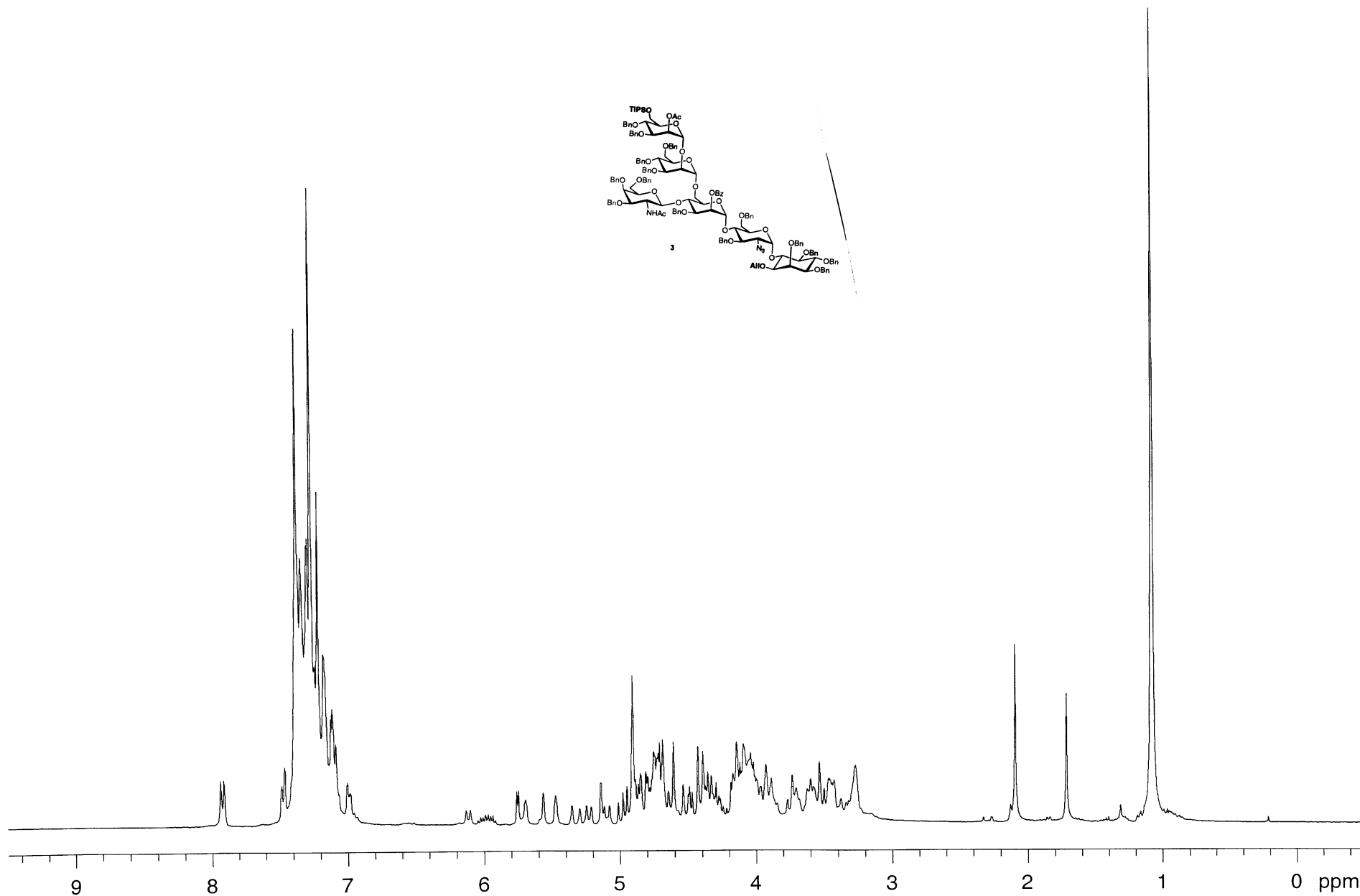
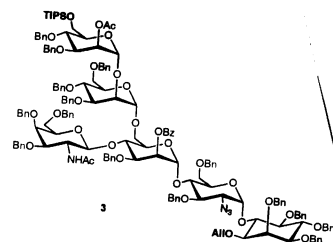


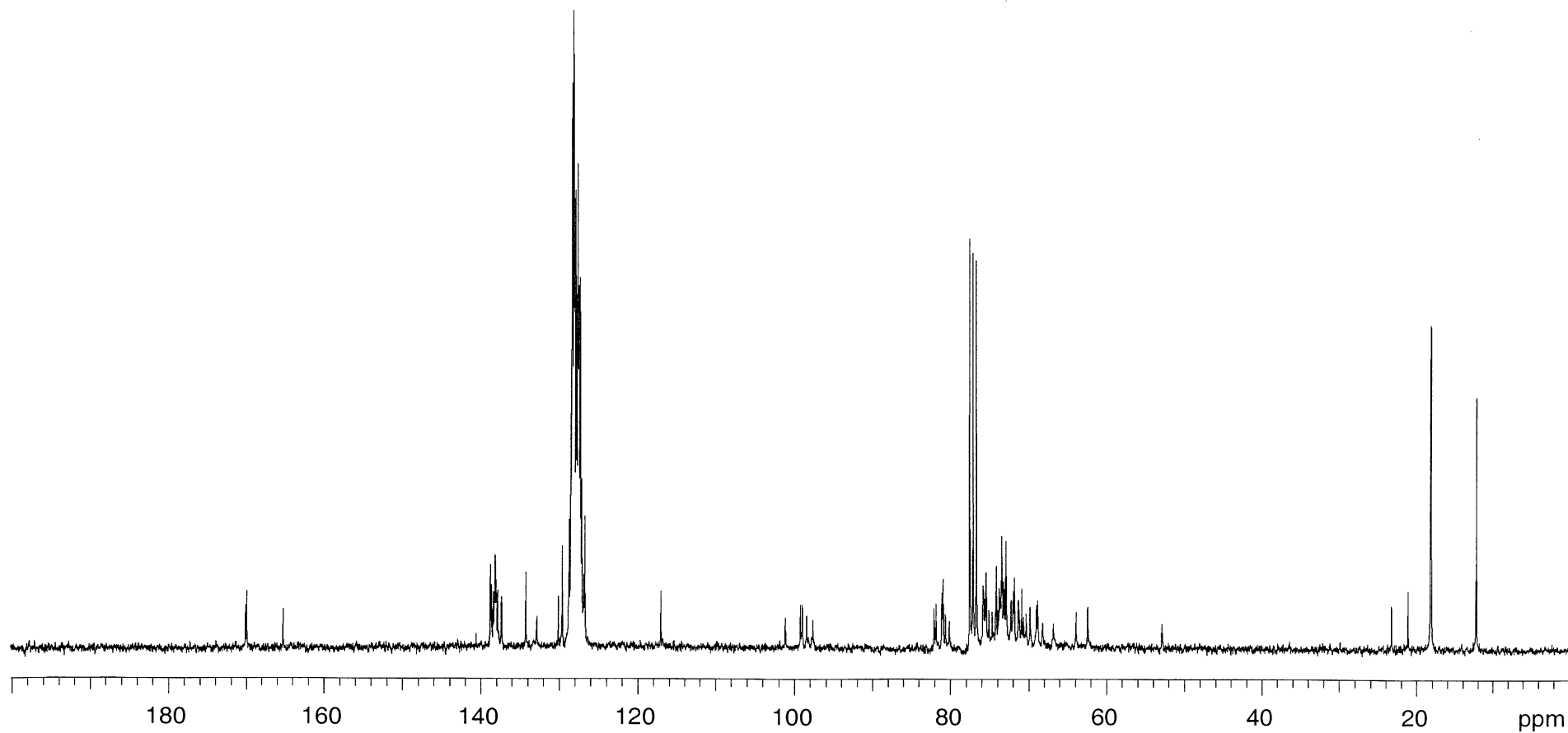
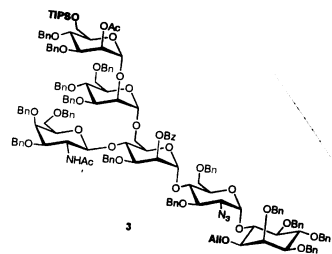


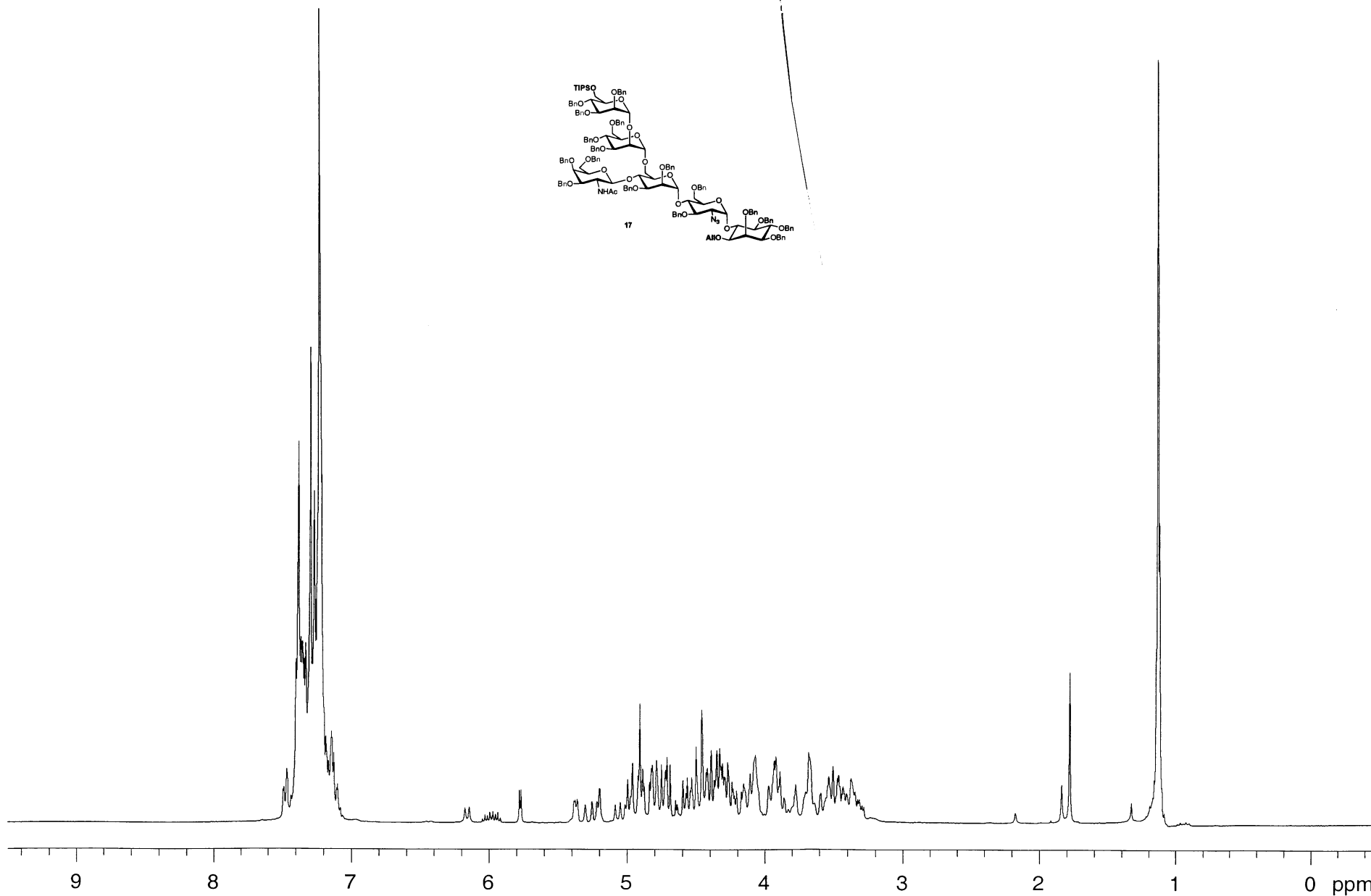
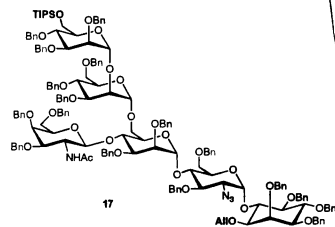


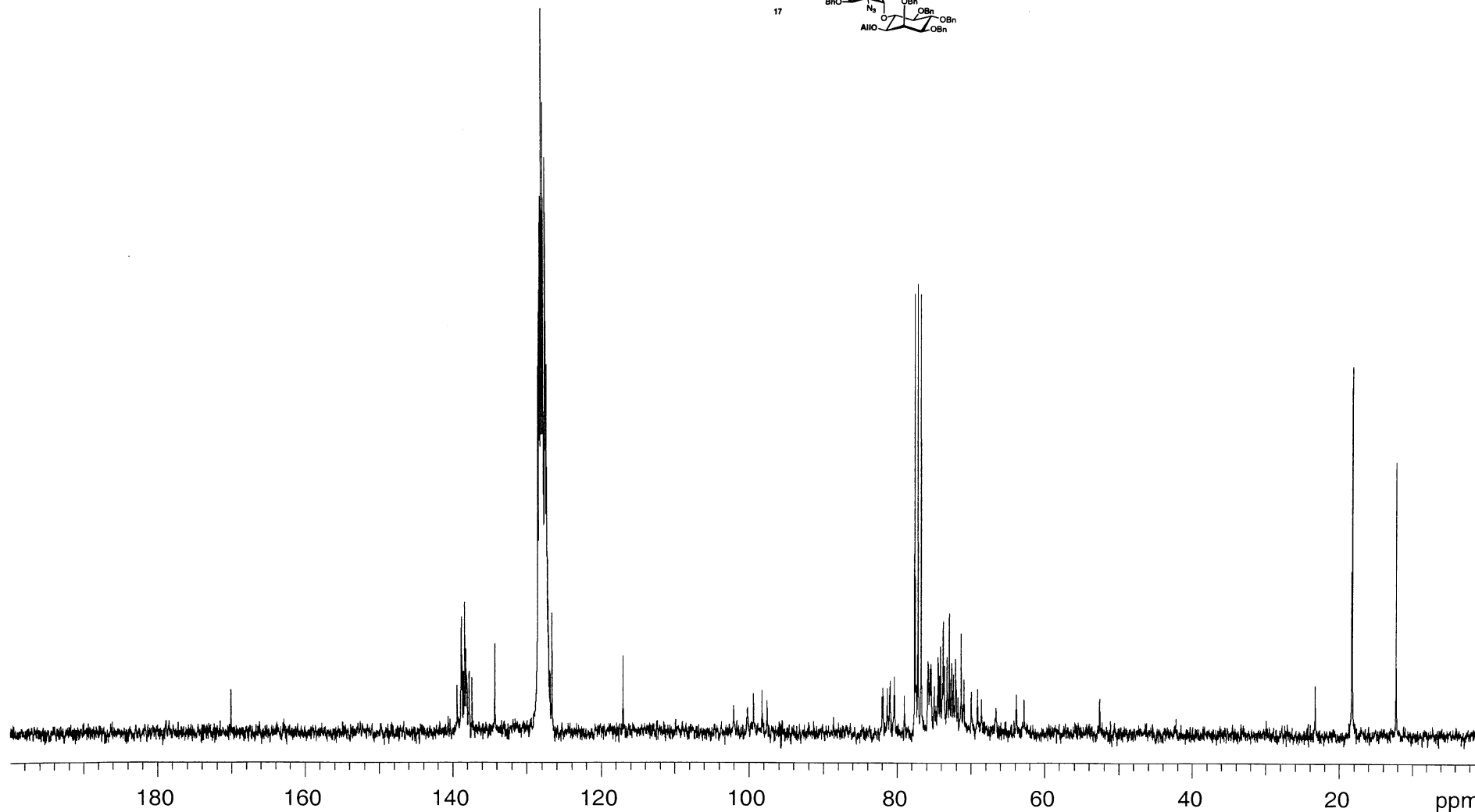
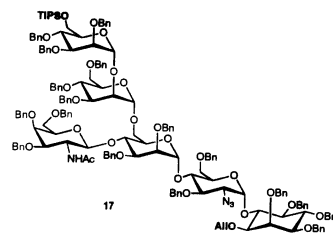












IonSpec HiResMALDI

File: FTM9823.trans

Yong-Uk Kwon/Seeberger - YUK5-23A - DHB tl - L20 Laser

Mode: Positive

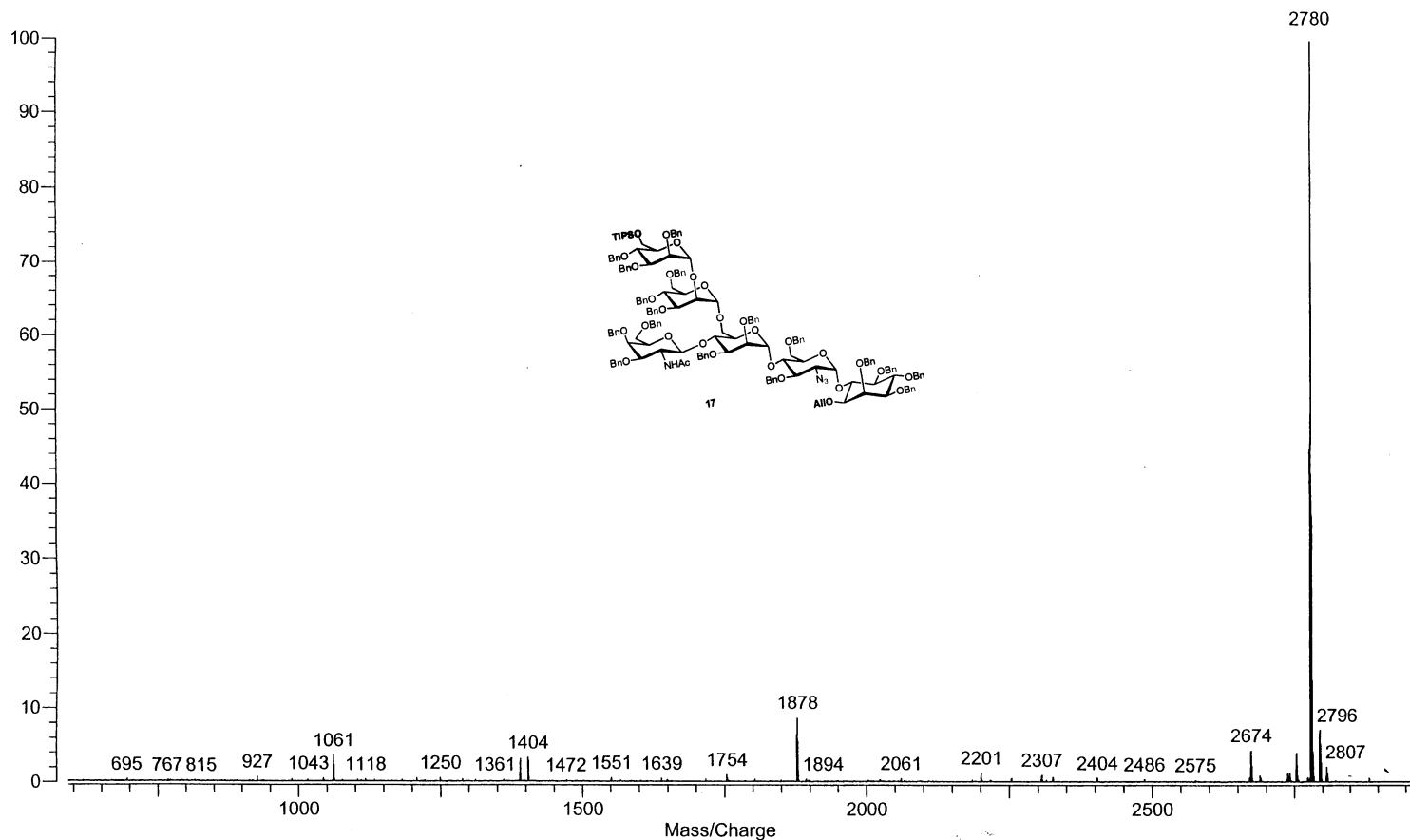
Scans: 5

HR 25

Date: 24-AUG-2004

Time: 10:16:29

Scale: 18.2845



IonSpec HiResMALDI

File: FTM9823.trans

Yong-Uk Kwon/Seeberger - YUK5-23A - DHB tl - L20 Laser

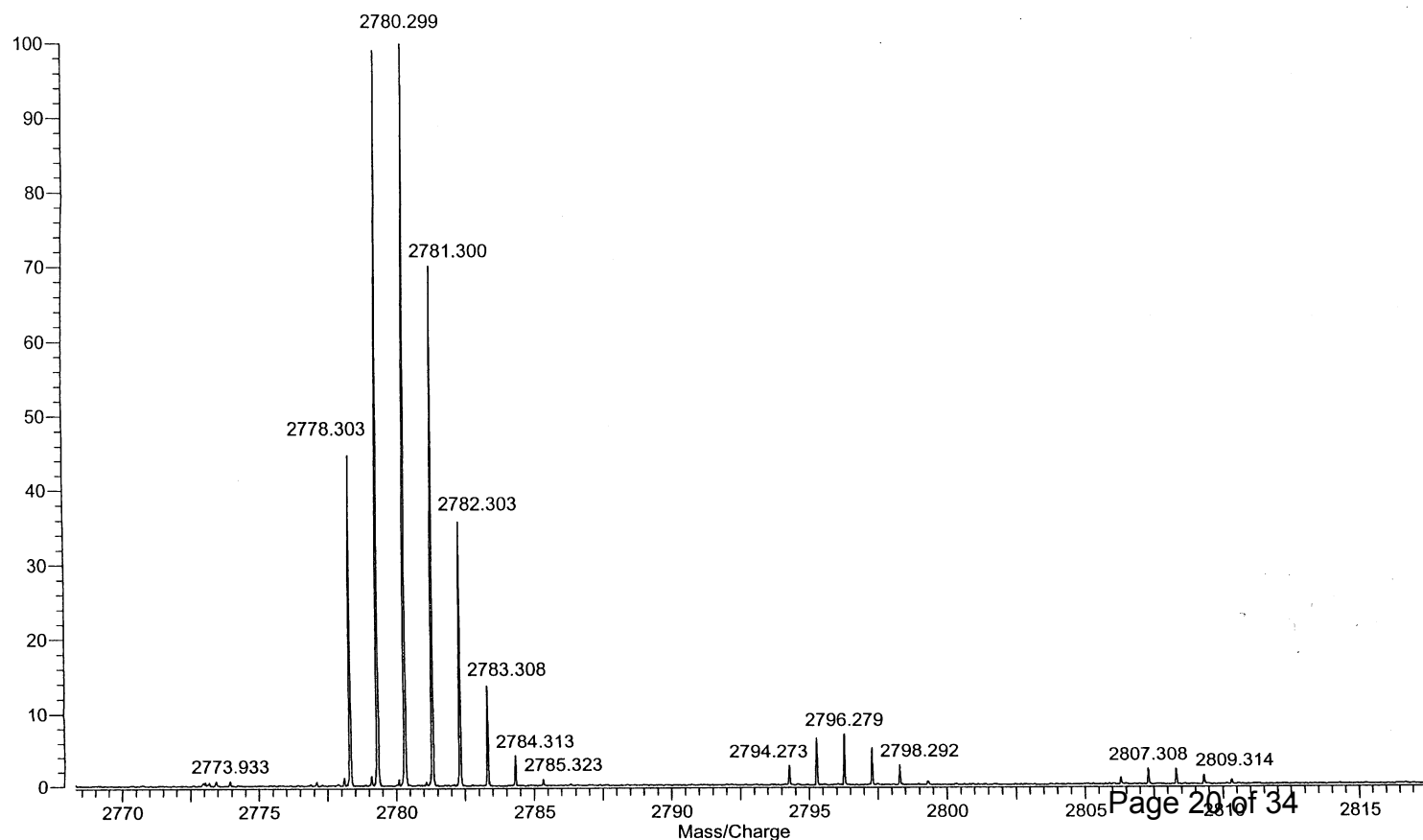
Mode: Positive

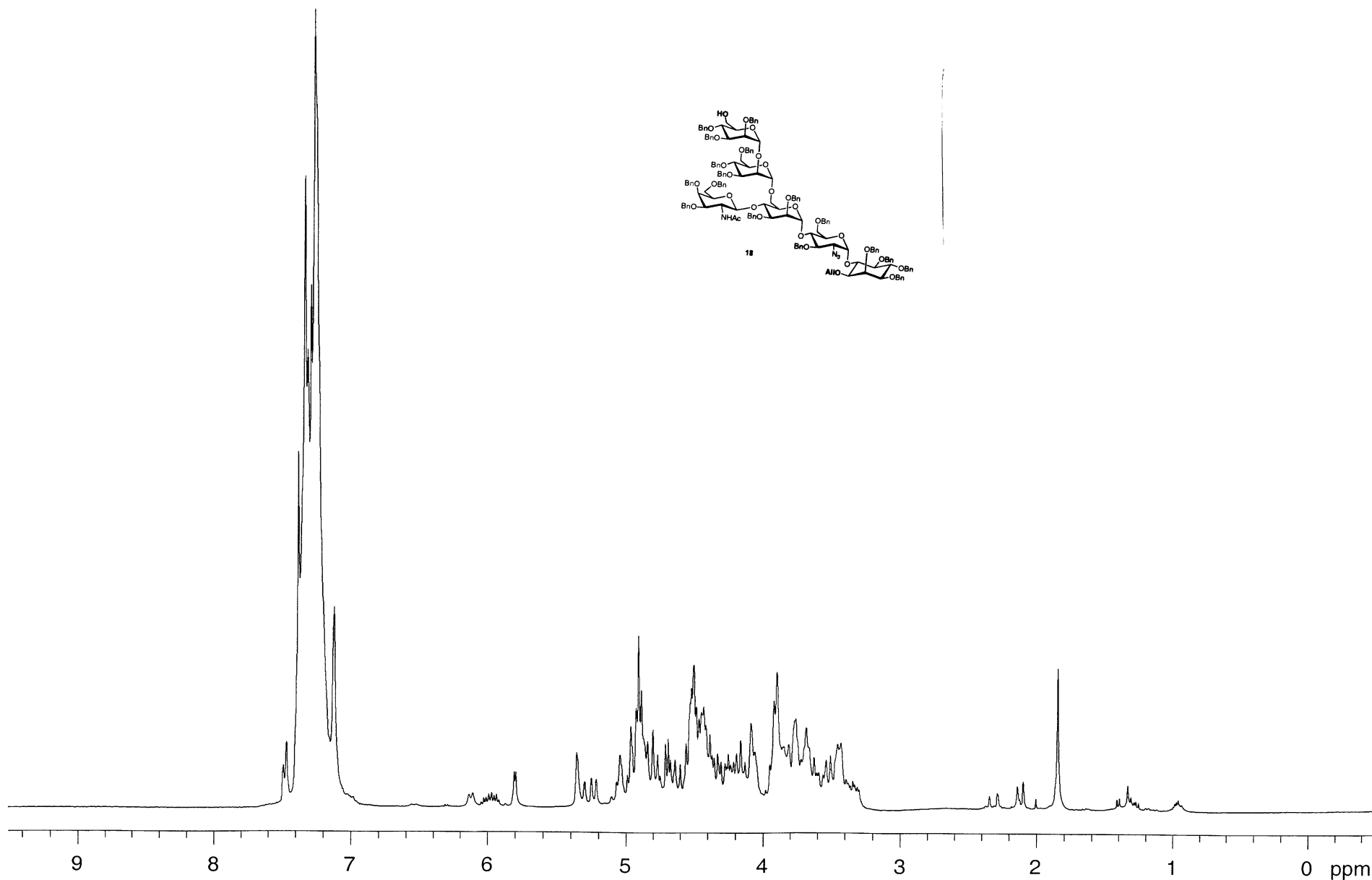
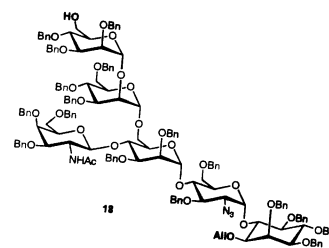
Scans: 5

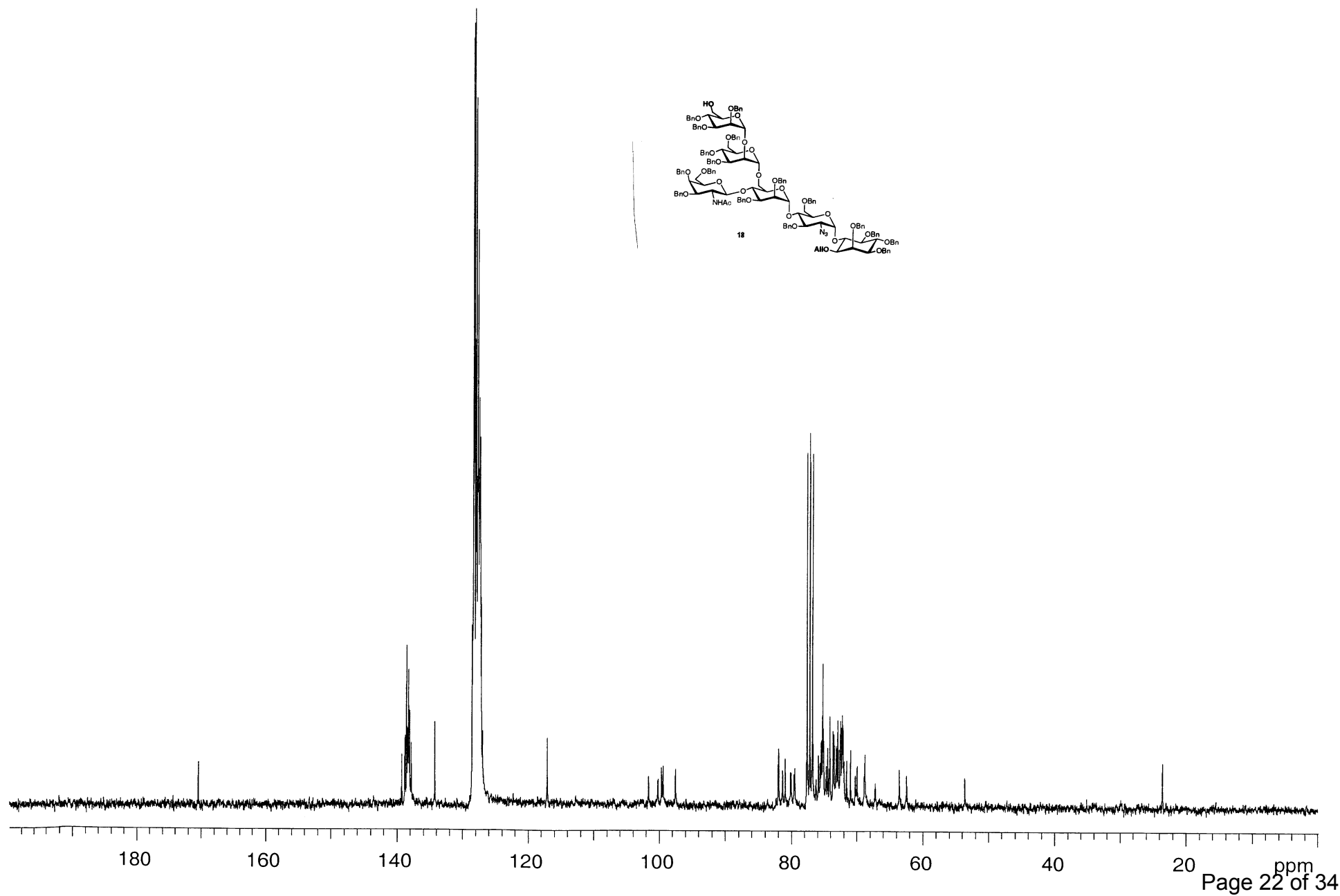
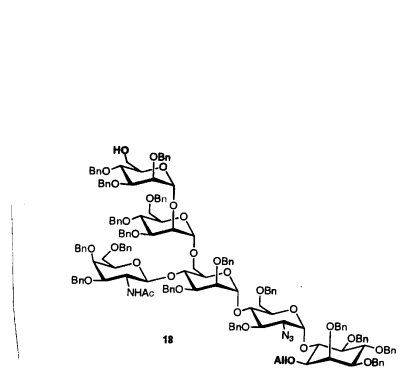
Date: 24-AUG-2004

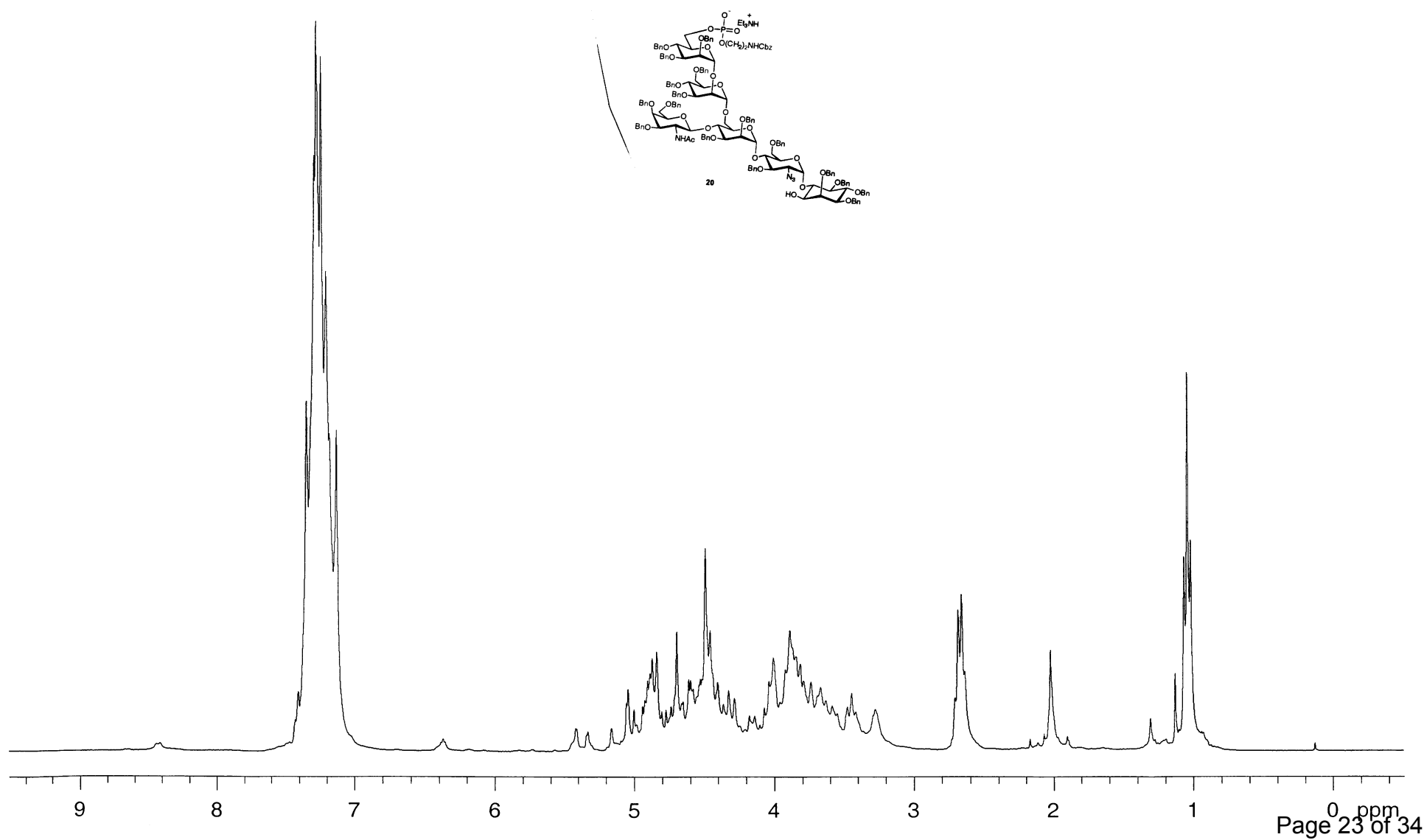
Time: 10:16:29

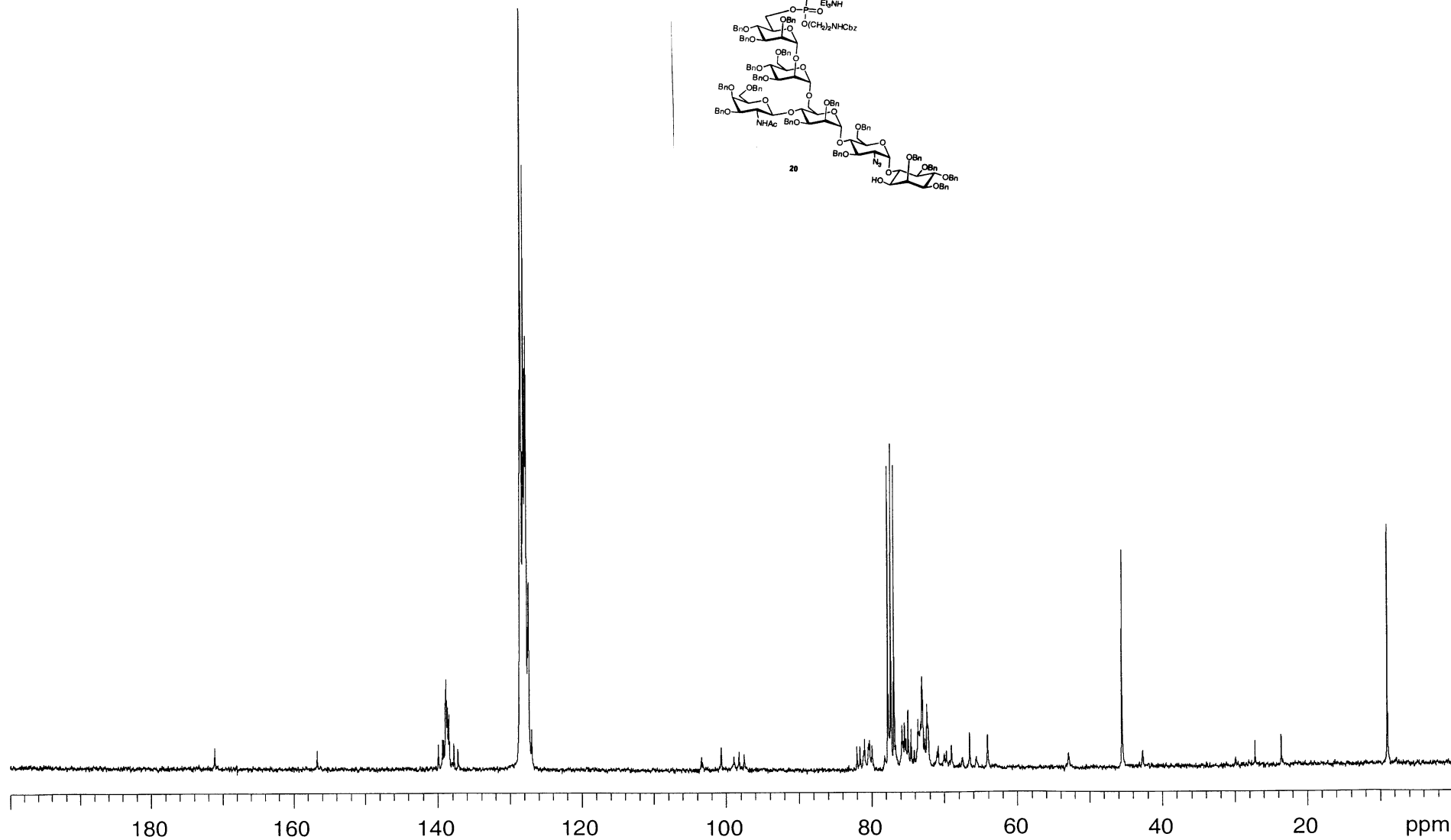
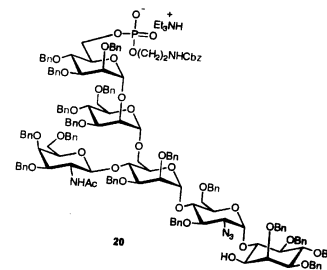
Scale: 18.2845

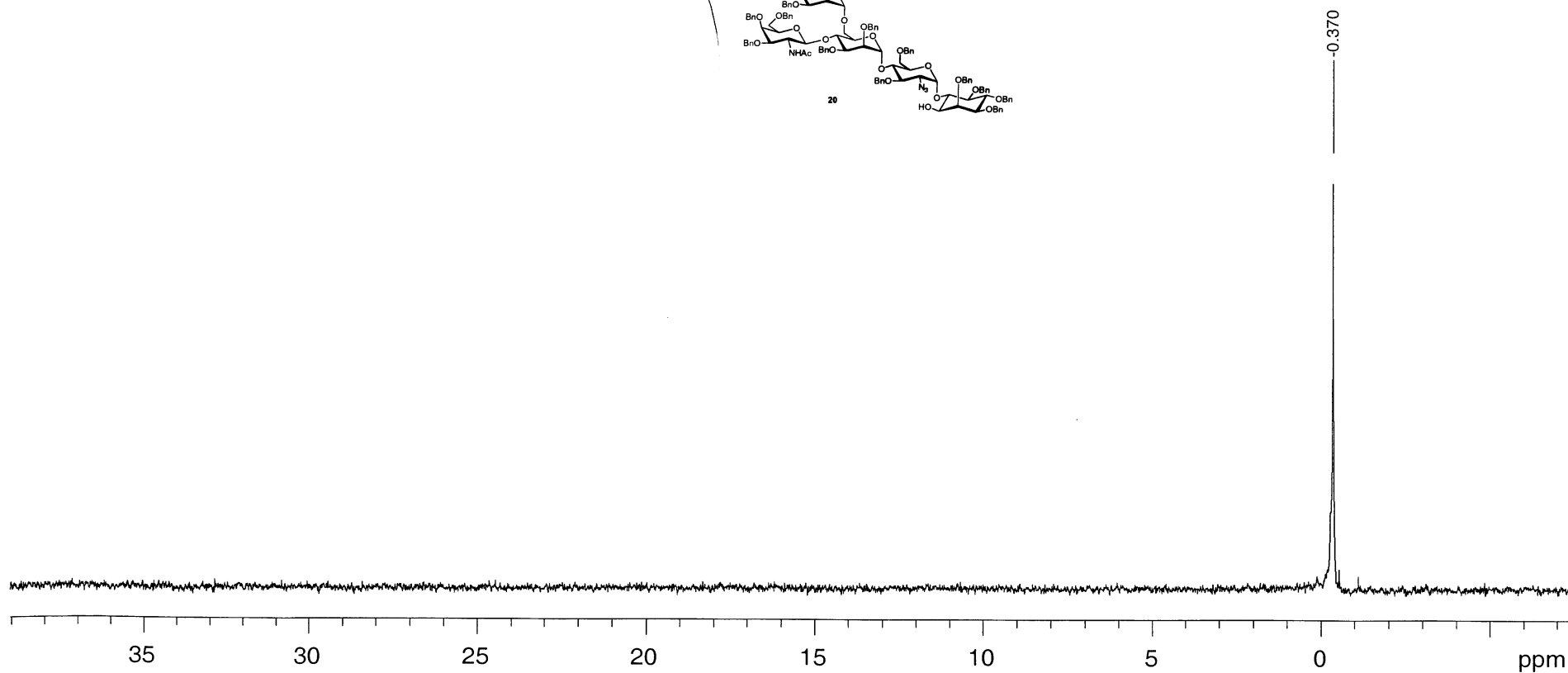
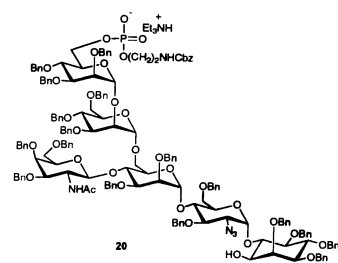


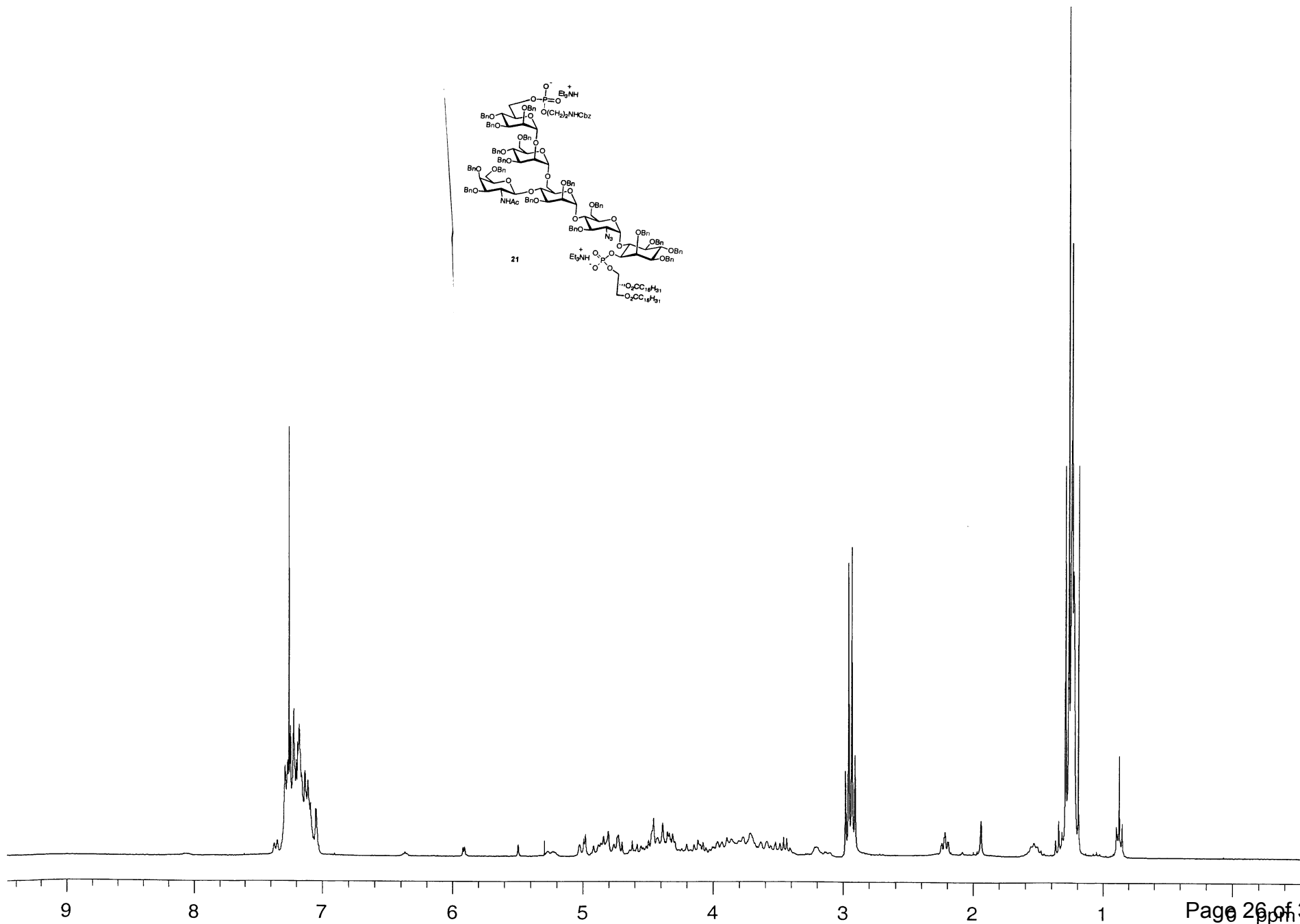
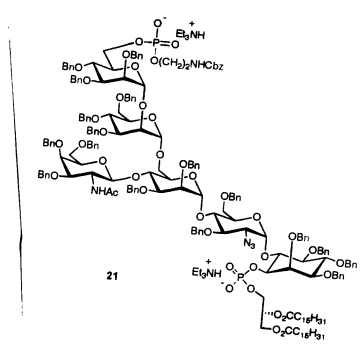


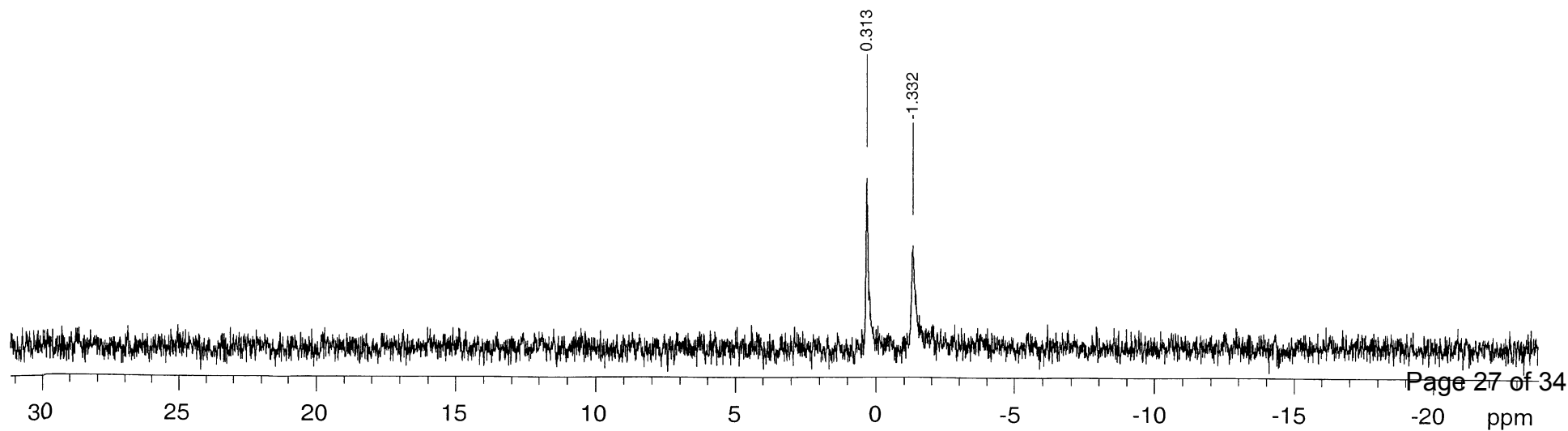
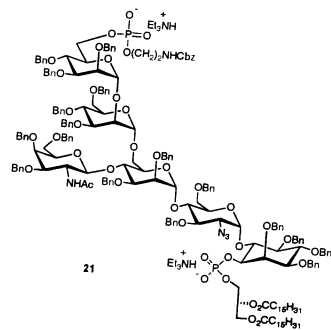


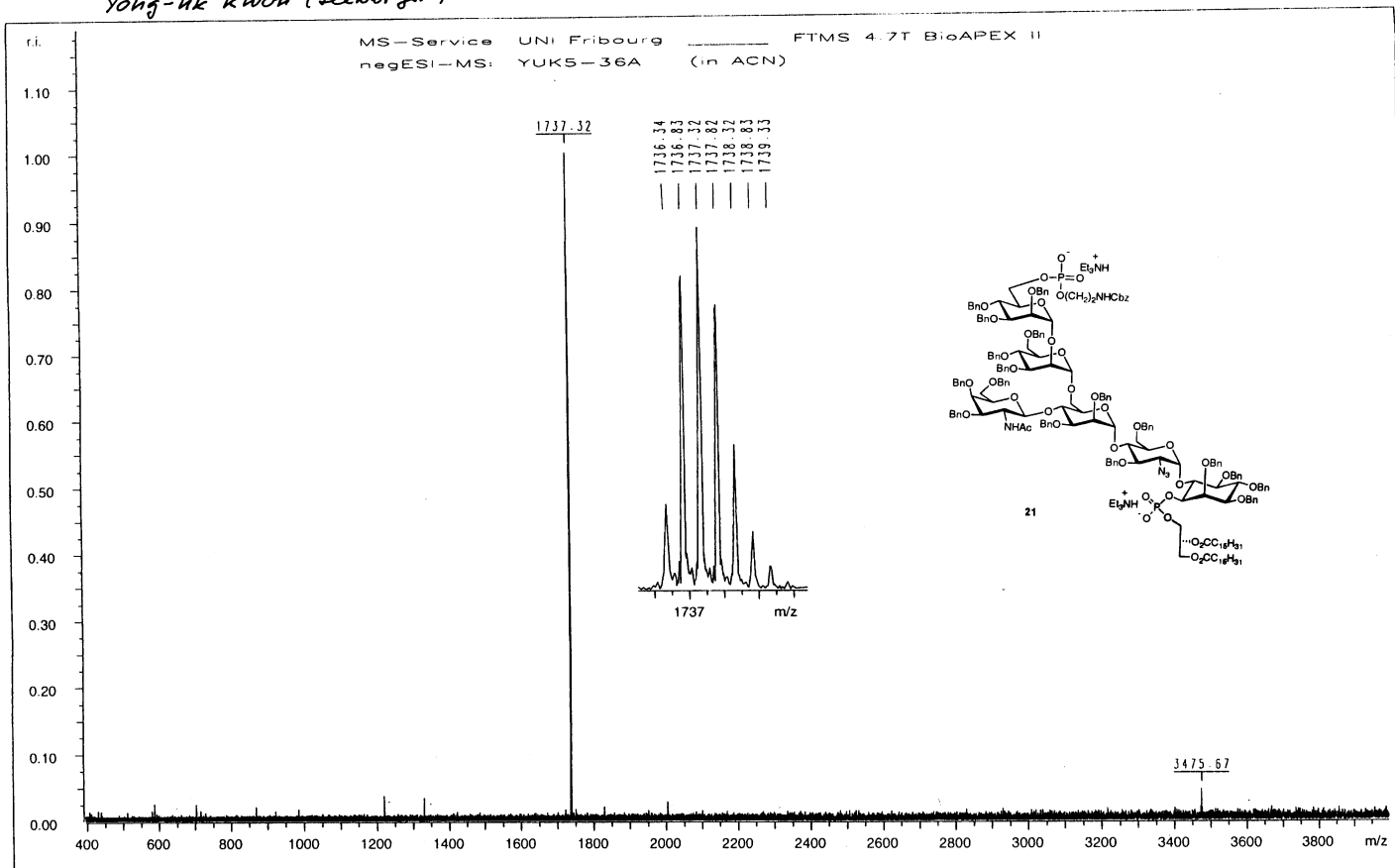




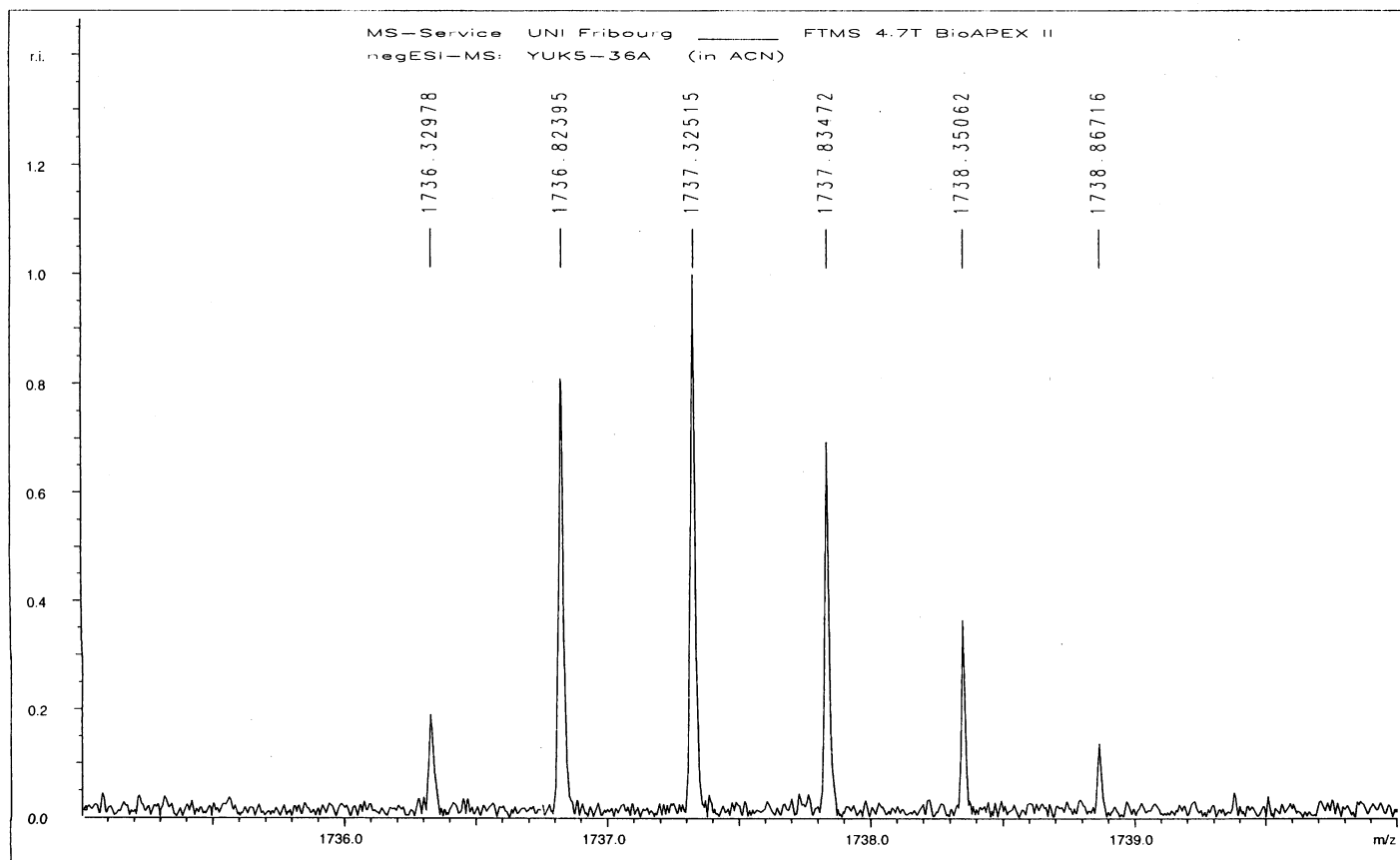








/C=/Data/ETH/KWON8414_negESI/1/pdata/1 Administrator Mon Oct 18 08:16:07 2004



/C=/Data/ETH/KWON8414_negESI/10/pdata/1 Administrator Mon Oct 18 08:17:40 2004

