

Supplementary Information for:

Duplex and hairpin dimer structures for perylene diimide-oligonucleotide conjugates

Yan Zheng, Hai Long, George C. Schatz and Frederick D. Lewis

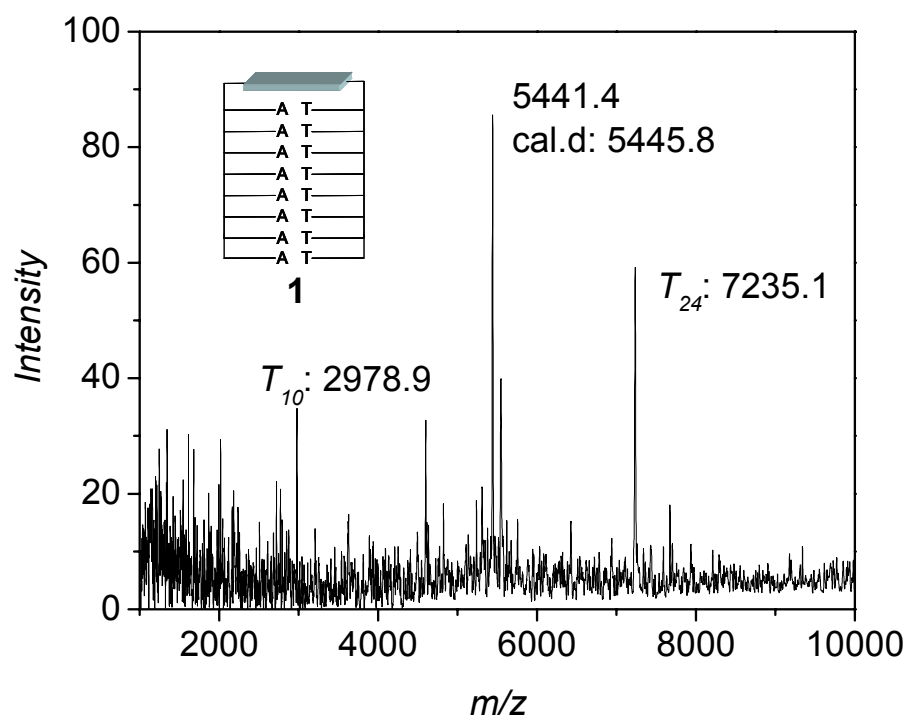


Figure S1. MALDI-TOF mass spectrum for conjugates **3**. T_{10} and T_{24} are polyT strands added to the conjugates as internal mass calibration standards. m/z 3618 peak is doubly ionized T_{24} .

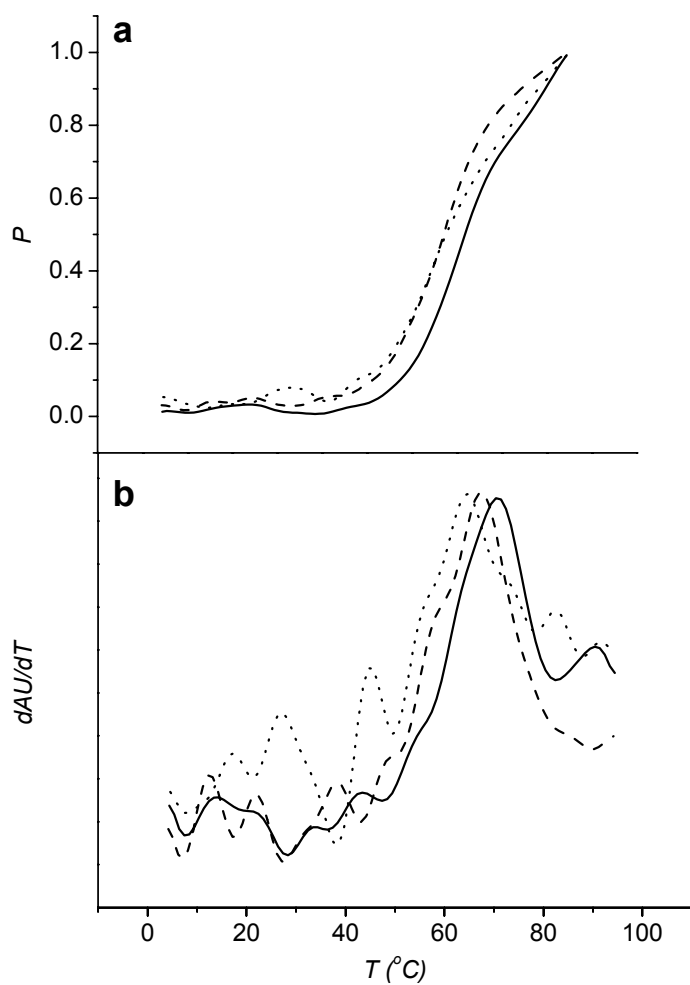


Figure S2. Melting profiles (a) and derivatives (b) of duplex **1:2** at various concentrations. Solid line: 1.5 μM , dot line: 0.4 μM . Buffer contains 10 mM phosphate, pH 7.4, 100 mM NaCl.

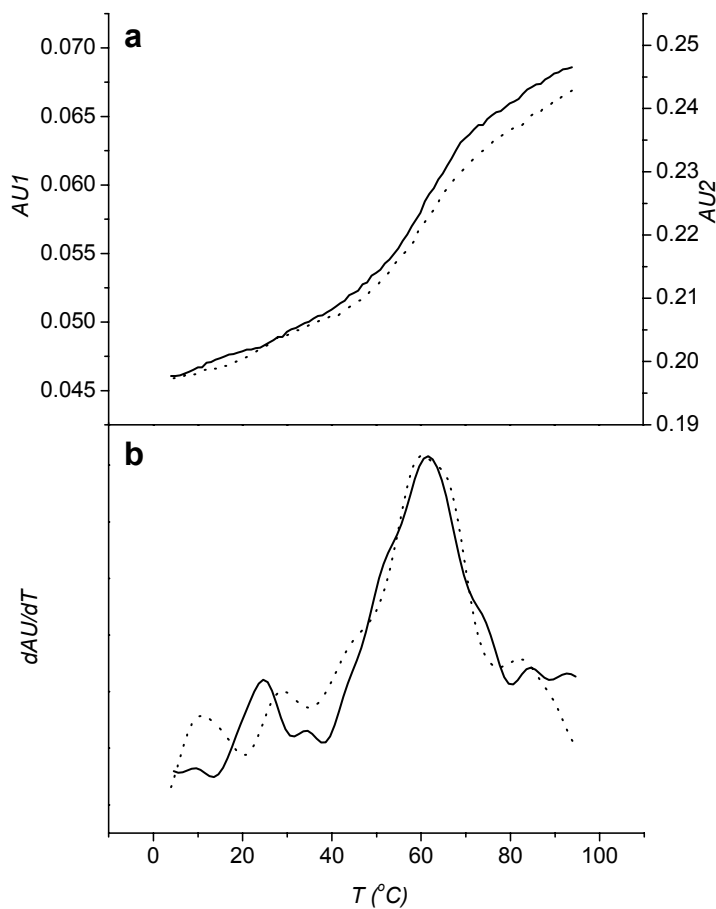


Figure S3. Melting profiles (a) and derivatives (b) of hairpin dimer **3:3** at various concentrations. Solid line: 1.8 μM , dash line: 1.0 μM , dot line: 0.6 μM . Buffer contains 10 mM phosphate, pH 7.4, 100 mM NaCl.

Table S1. Concentration dependent melting temperatures.

	Concentration (μM)	T_m ($^{\circ}\text{C}$)
3:3	0.4	60.4
	1.5	61.5
1:2	0.6	64.5
	1.0	67.5
	1.8	70.8