

Observation of the Formation of Supported Bilayers by Amphiphilic Peptidyl-RNA

Adina N. Lazar,^a Anthony W. Coleman,^{a*} Silvia Terenzi^b and Peter Strazewski^c

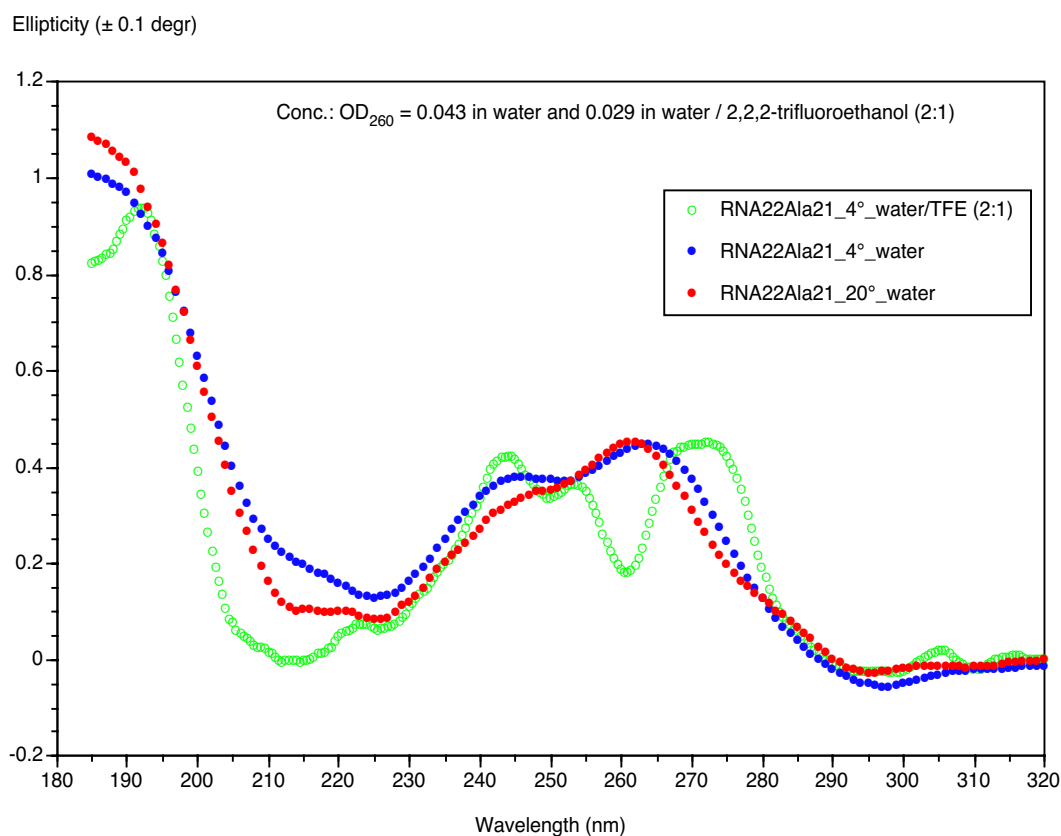
^[a] Dr. A. W. Coleman, Assemblages Moléculaires d'Intérêt Biologique (UMR CNRS 5086), IBCP, 7 passage du Vercors, F-69367 Lyon, France. Fax: +334 72 72 26 90 ; Tel: +334 72 72 26 40 ; E-mail: aw.coleman@ibcp.fr

^[b] Dr. S. Terenzi, Laboratoire de Chimie Physique des Polymères et Membranes, École Polytechnique Fédérale de Lausanne, CH-1015 Lausanne, Switzerland ; E-mail : silvia.terenzi@epfl.ch

^[c] Prof. P. Strazewski, Laboratoire de Synthèse de Biomolécules (UMR 5181), Université Claude Bernard Lyon 1, 43 bvd du 11 novembre 1918, F-69622 Villeurbanne Cedex, France ; E-mail : strazewski@univ-lyon1.fr

Supplementary Data

Circular Dichroism



Dynamic Light Scattering (90°)

RNApeptide S5

jerome

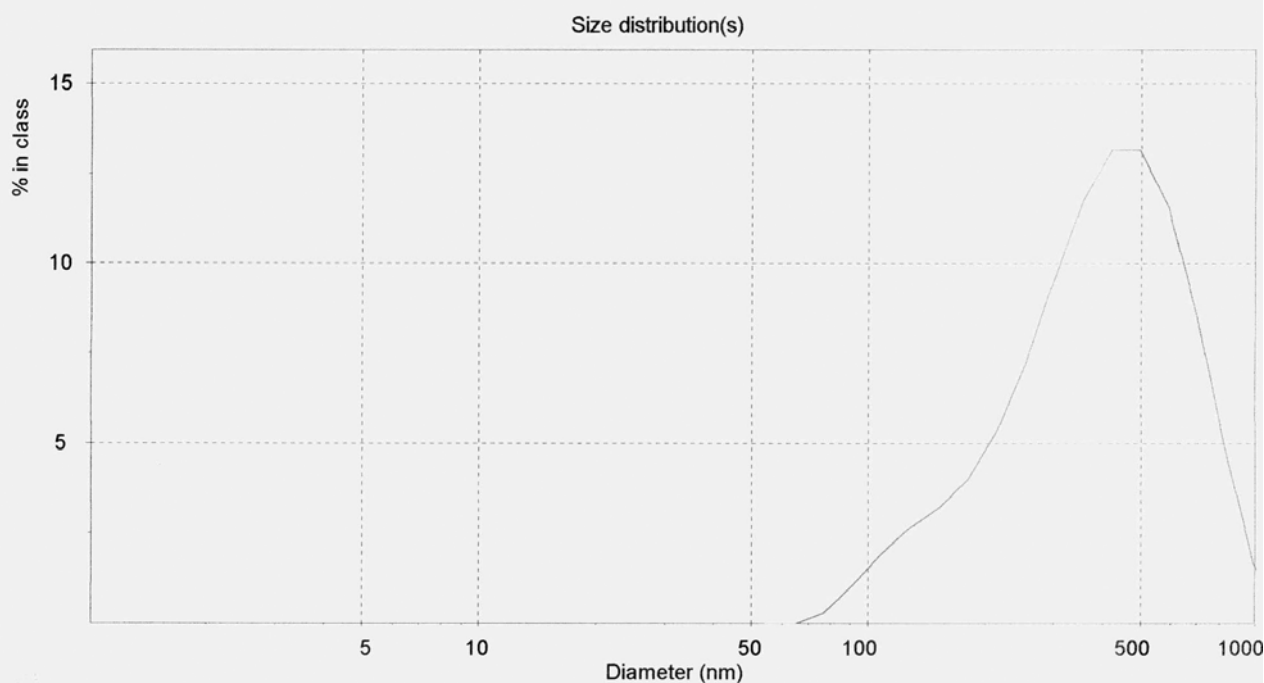
File data from C:\PCS\JEROME\JEROME.sz2 Record 967
S4700

Size(nm)	Intensity	Volume	Number
54.5	0.0	0.0	0.0
64.6	0.0	0.1	0.1
76.6	0.3	0.4	0.4
90.8	1.0	1.1	1.1
107.7	1.9	1.9	1.9
127.6	2.6	2.6	2.6
151.3	3.2	3.3	3.3
179.3	4.0	4.1	4.1
212.6	5.3	5.5	5.5
252.0	7.2	7.3	7.3
298.7	9.6	9.5	9.5
354.1	11.8	11.6	11.6
419.7	13.1	12.8	12.8
497.6	13.2	12.8	12.8
589.8	11.5	11.2	11.2
699.2	8.5	8.4	8.4
828.8	4.9	5.0	5.0
982.5	1.7	2.1	2.1
1164.6	0.1	0.5	0.5
1380.5	0.0	0.0	0.0
1636.5	0.0	0.0	0.0
1939.9	0.0	0.0	0.0
2299.6	0.0	0.0	0.0
2726.0	0.0	0.0	0.0

Peak Analysis by intensity			
Peak	Area	Mean	Width
1	100.0	425.3	529.5

Peak Analysis by volume			
Peak	Area	Mean	Width
1	100.0	428.3	542.6

Peak Analysis by number			
Peak	Area	Mean	Width
1	100.0	428.3	542.6



Rec.Angle	KCounts	ZAve(nm)	Poly.Index	Quality	Error	Date	In Range	Merit	Analysis
967 90.0	32.3	385.5	0.638	Check Merit	0.00499	20/09/02	43.5	1.978	Auto.CONTIN

Malvern Instruments Ltd, Malvern UK +44 1684 892456

Atomic Force Microscopy

Interface zone between layered phase (left) and nanovesicle phase (right) with a rimm in between.

