

Thiolated PAMAM dendrimer-coated CdSe/ZnSe nanoparticles as protein transfection agents

Adam C. Wisher, Igor Bronstein and Victor Chechik

Electronic Supplementary Information.

Confocal images of control transfection experiments.

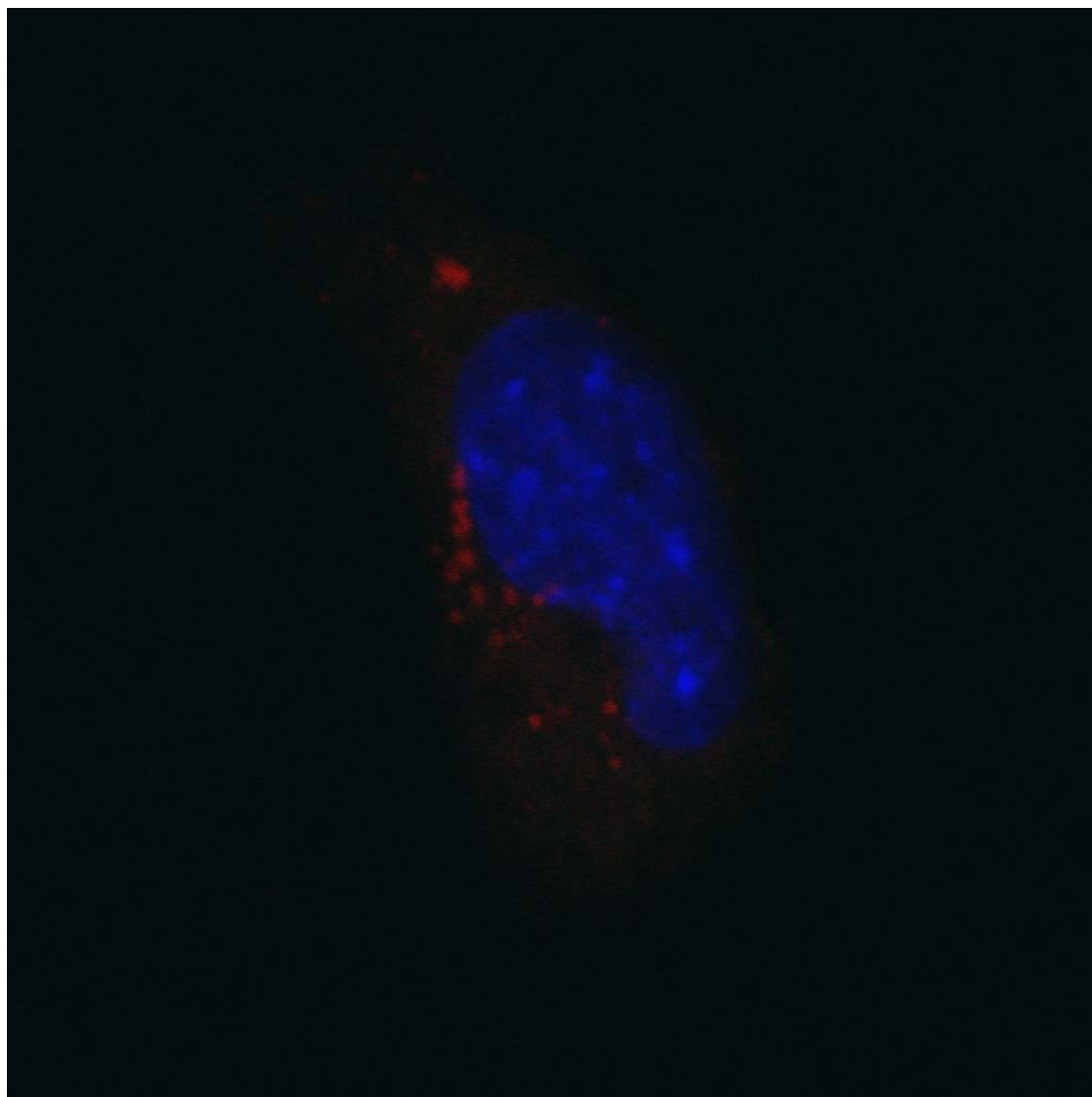


Figure S1. Confocal images of NT2 cells incubated with CdSe/ZnSe nanoparticles. The blue channel in combined image is DAPI stain, the red channel is CdSe/ZnSe nanoparticles.

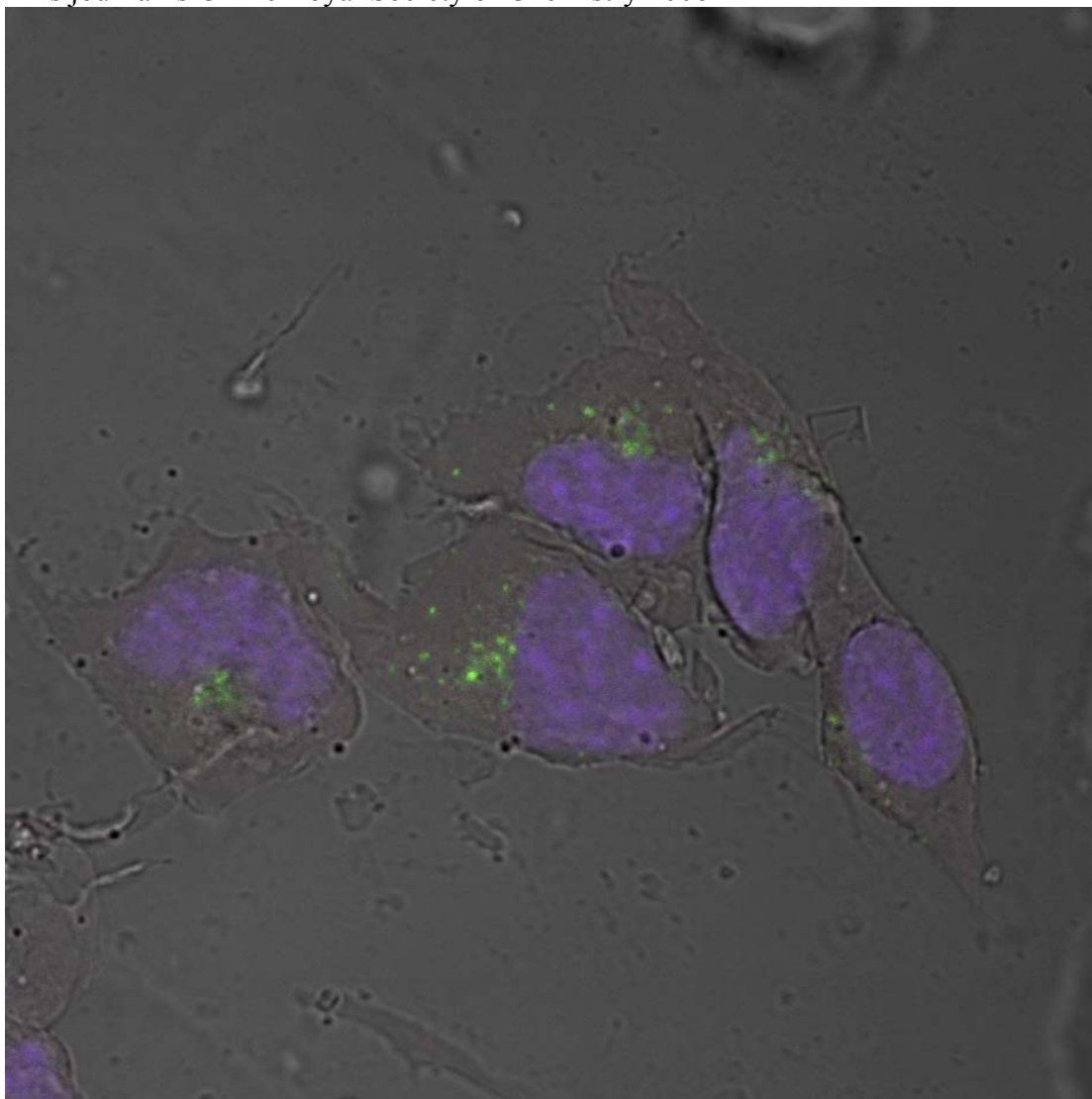


Figure S2. Confocal images of NT2 cells incubated with Alexa Fluor-labelled S100A protein. The blue channel in combined image is DAPI stain, the green channel is Alexa Fluor dye. White channel shows the visible micrograph of the cells. This image was obtained with high gain on the microscope, and the level of fluorescence in the green channel is comparable to the background autofluorescence observed in samples which had not been exposed to protein.