

5

Supplementary data

:

10

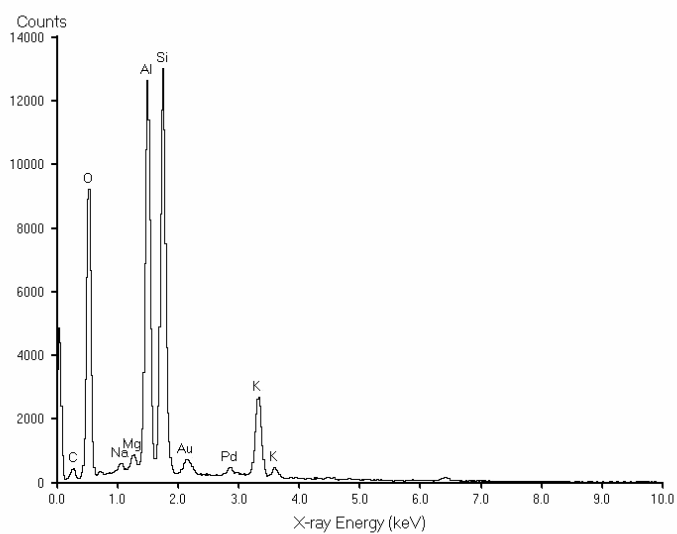


Fig.S1 EDS result of a clean mica substrate before nanowire growth. The peaks of Au and Pd can be attributed to the Au-Pd alloy coating, which is applied to assist the conductivity. While Na, Mg, and K peaks are caused by the micro-component of the mica substrate.

15

20

25

30

35

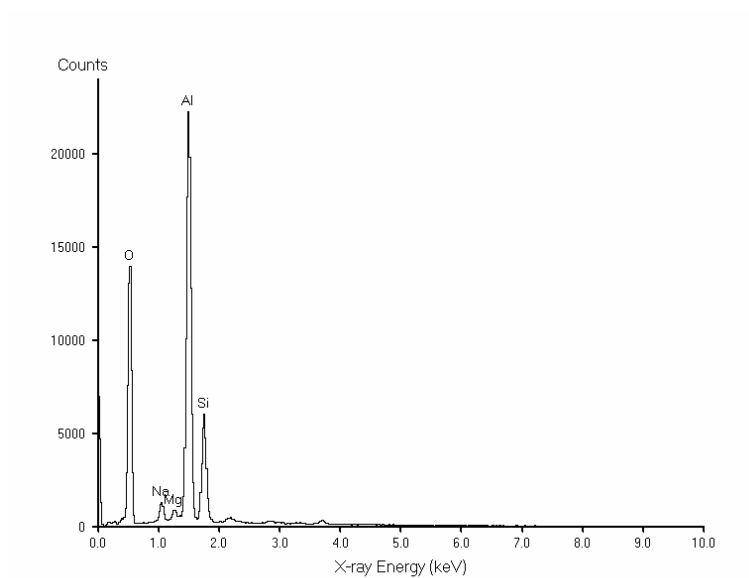


Fig.S2 EDS result of the synthesized nanowires. The peaks of Na and Mg originate from the micro-component of the mica substrate.

40

45

50

55

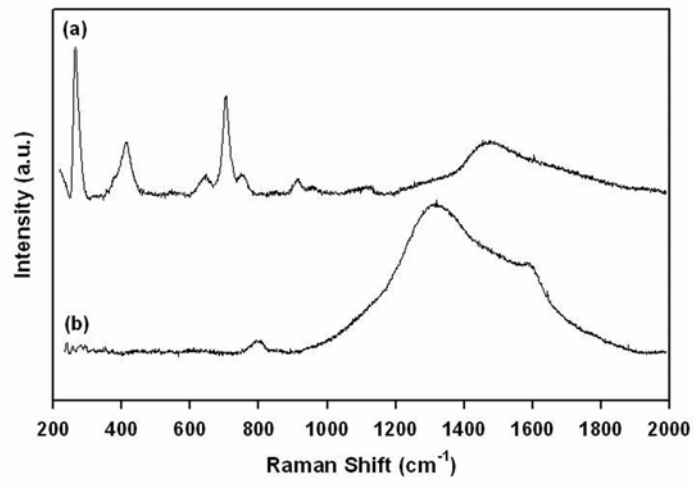


Fig.S3 Raman spectra of the clean mica substrate and mullite nanowires.

60

65

70

75

80