

```

Current Data Parameters
NAME          saumini3c
EXPNO         4
PROCNO        1

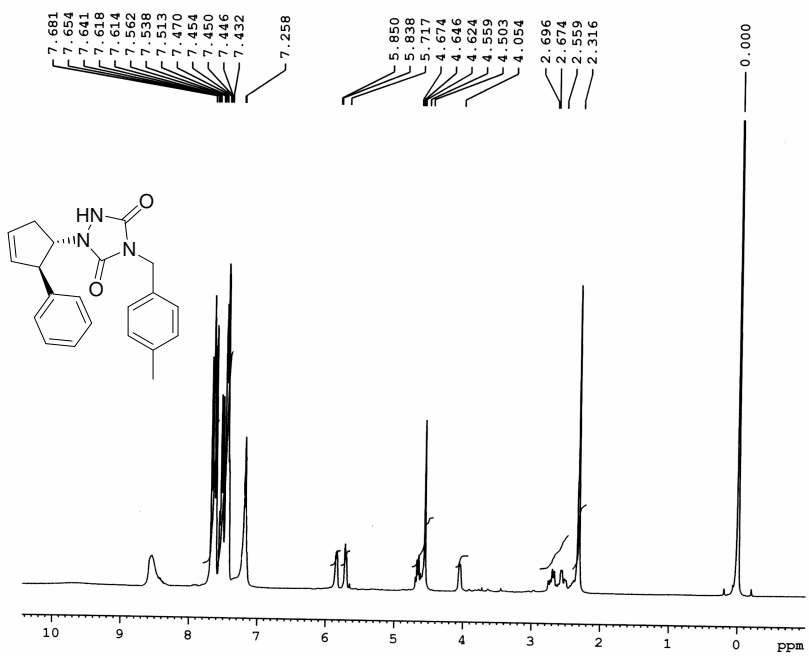
F2 - Acquisition Parameters
Date_         20060112
Time          9.51
INSTRUM       spect
PROBHD        5 mm Dual 13C/
PULPROG       zgpg
TO            32768
SOLVENT       CDCl3
NS            15262
DS            0
SWH           18115.941 Hz
FIDRES        0.552855 Hz
AQ            0.9044468 sec
RG            3649.1
DW            9.00 usec
DE            27.600 usec
TE            0.0 K
D1            3.0000000 sec
d11           0.0300000 sec
MCREST        0.0000000 sec
MCWRK         0.0150000 sec

===== CHANNEL f1 =====
NUC1          13C
P1            12.50 usec
PL1           -6.00 dB
SF01          75.4760204 MHz

===== CHANNEL f2 =====
CPDPRG2       wait216
NUC2          1H
PCPD2         80.00 usec
PL2           120.00 dB
PL12          17.23 dB
SF02          300.1312005 MHz

F2 - Processing parameters
SI            32768
SF            75.4677470 MHz
WDW           EM
SSB           0
LB            1.00 Hz
GB            0
PC            1.40

1D NMR plot parameters
CX            20.00 cm
CY            0.00 cm
FIP           214.050 ppm
F1            16153.87 Hz
F2            -45.795 ppm
F3            -512.80 Hz
PPMCM         11.04224 ppm/cm
HZCM          833.33331 Hz/cm
    
```



```

Current Data Parameters
NAME          Thirumalai
EXPNO         1
PROCNO        1

F2 - Acquisition Parameters
Date_         20060110
Time          13.40
INSTRUM       spect
PROBHD        5 mm Dual 13C/
PULPROG       zg30
TD            22468
SOLVENT       CDCl3
NS            8
DS            2
SWH           4194.631 Hz
FIDRES        0.186694 Hz
AQ            2.6782355 sec
RG            128
DW            119.200 usec
DE            6.00 usec
TE            0.0 K
D1            1.0000000 sec
MCREST        0.0000000 sec
MCWRK         0.0150000 sec

===== CHANNEL f1 =====
NUC1          1H
P1            11.00 usec
PL1           0.00 dB
SF01          300.1316507 MHz

F2 - Processing parameters
SI            32768
SF            300.1300072 MHz
WDW           EM
SSB           0
LB            0.30 Hz
GB            0
PC            10.00
    
```

