

## **Effect of Peracetylation on the Conformation of $\gamma$ -Cyclodextrin**

**Mino R. Caira, Giampiero Bettinetti, Milena Sorrenti,  
Laura Catenacci and Dyanne Cruickshank**

(a) Representative Thermogravimetric traces, Differential Scanning Calorimetric traces and XRPD patterns for isostructural solvates of peracetylated  $\gamma$ -Cyclodextrin:

**1** TA $\gamma$ CD·2(ethanol)·H<sub>2</sub>O

**2** TA $\gamma$ CD·1.5(2-propanol)·H<sub>2</sub>O

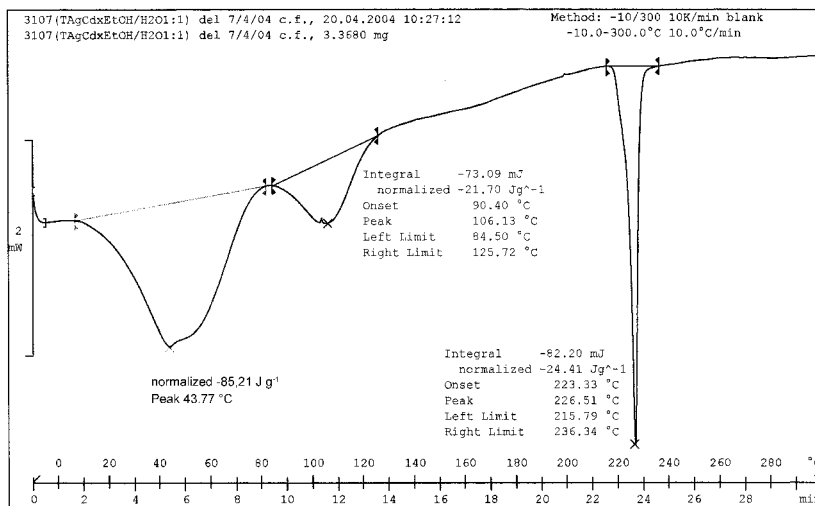
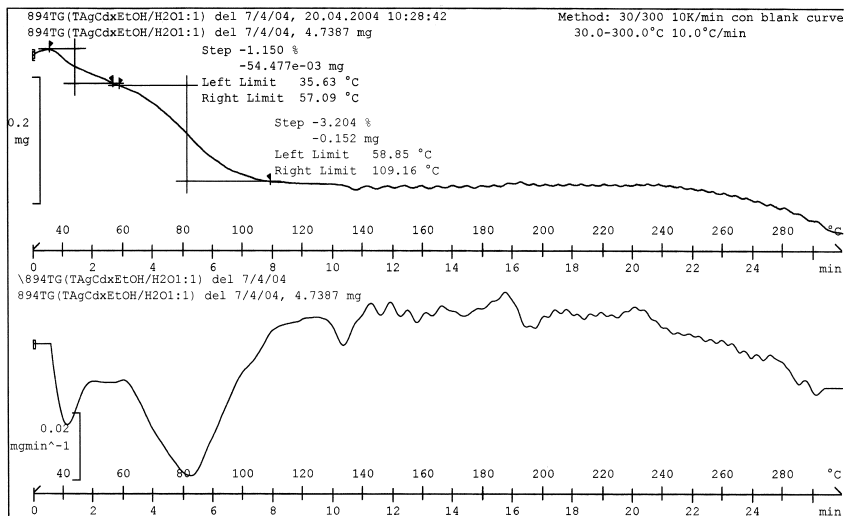
**3** TA $\gamma$ CD·1.5(acetone)

**4** TA $\gamma$ CD·1.5(*n*-propanol)

**5** TA $\gamma$ CD·3(ethanol)

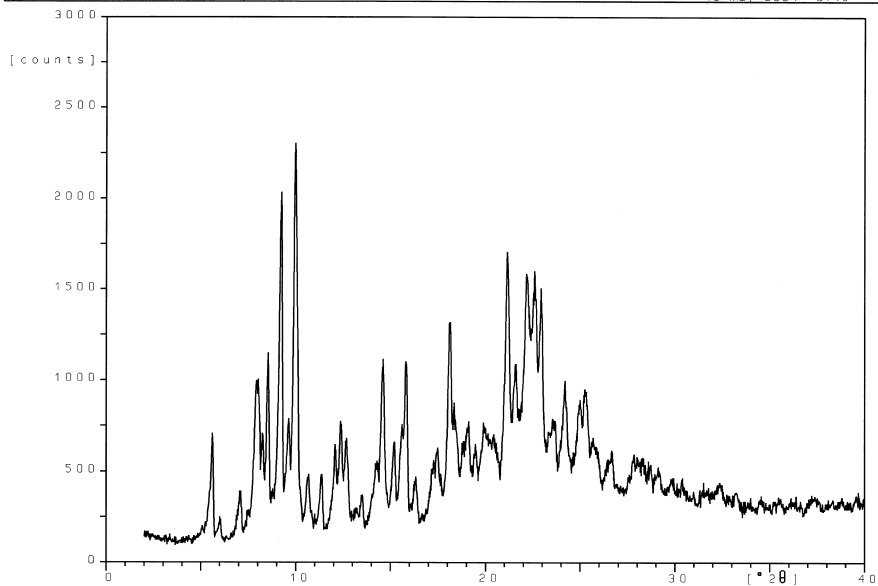
(b) Tabulated summary of thermal data

# 1 TA $\gamma$ CD·2(ethanol)·H<sub>2</sub>O



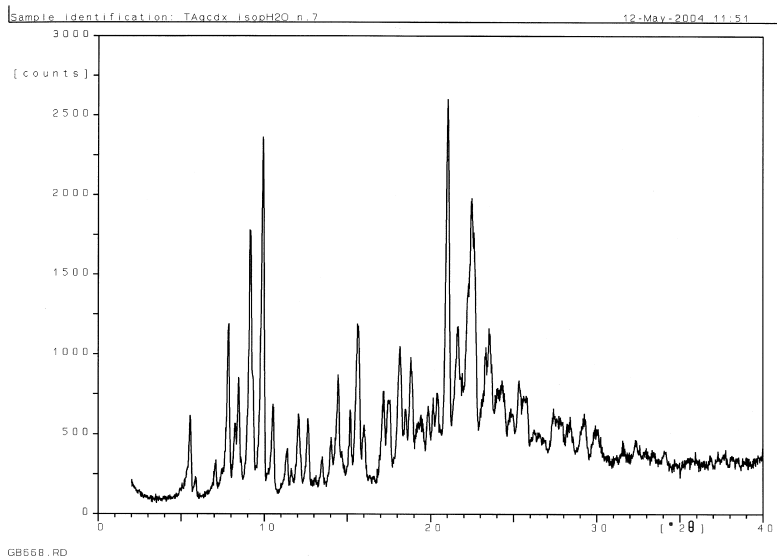
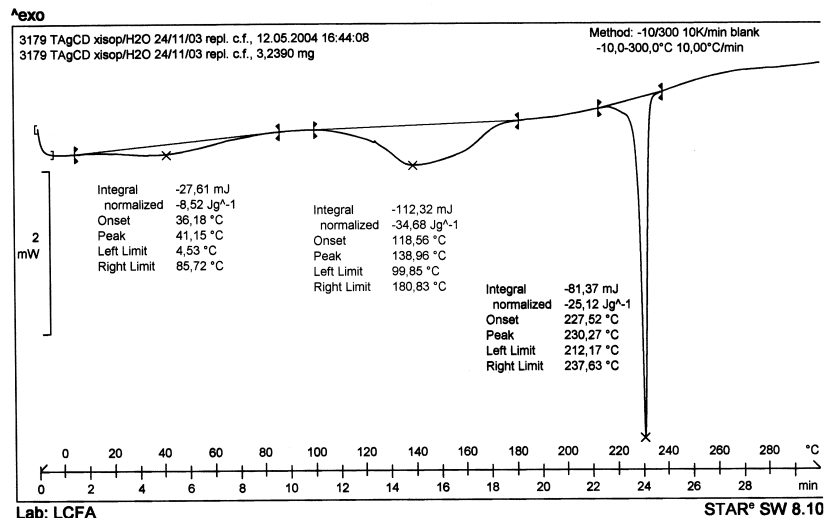
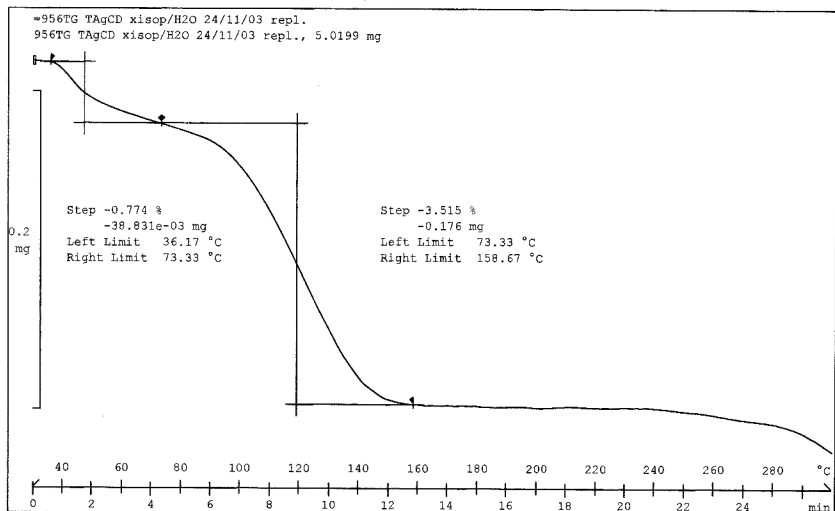
Sample identification: S TA $\gamma$ cdxEtOH/H2O 1:1

13-May-2004 9:15

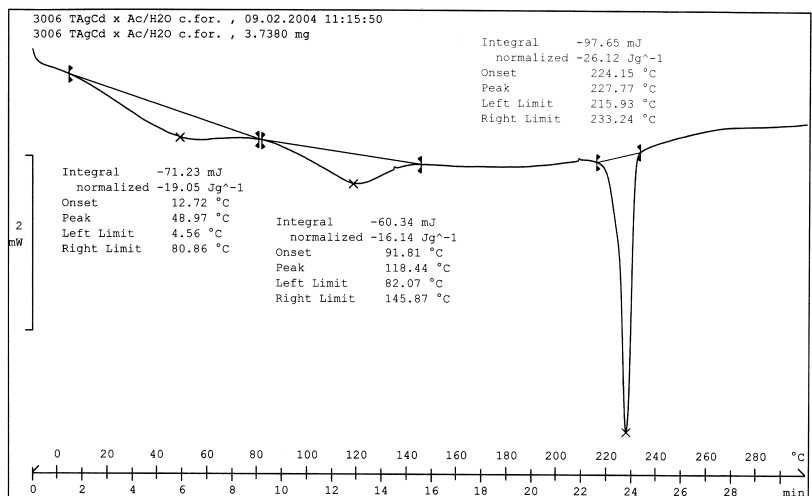
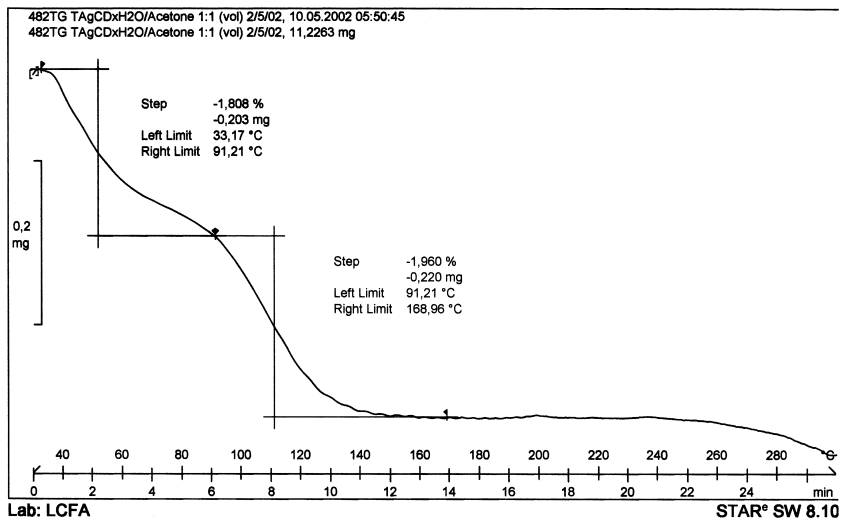


GR673\_RD

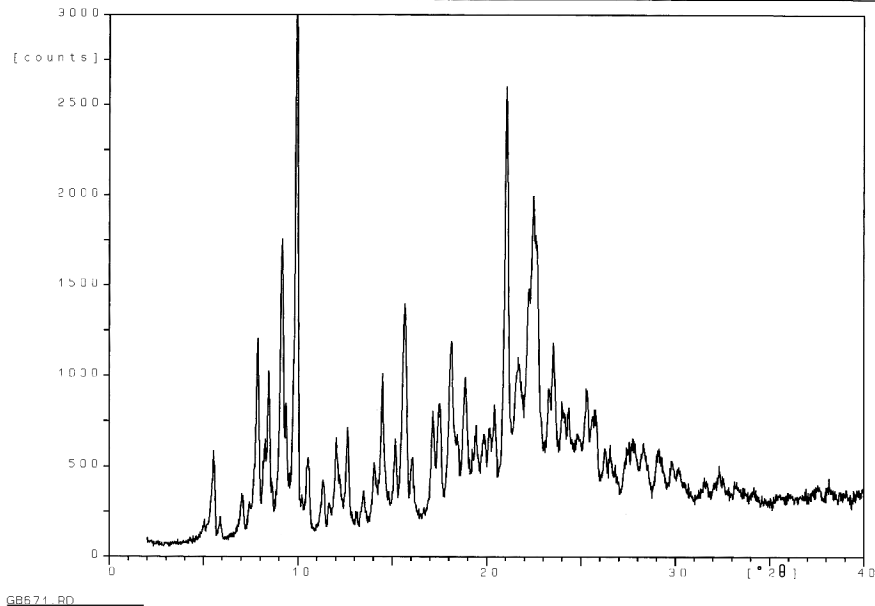
## 2 TAγCD·1.5(2-propanol)·H<sub>2</sub>O



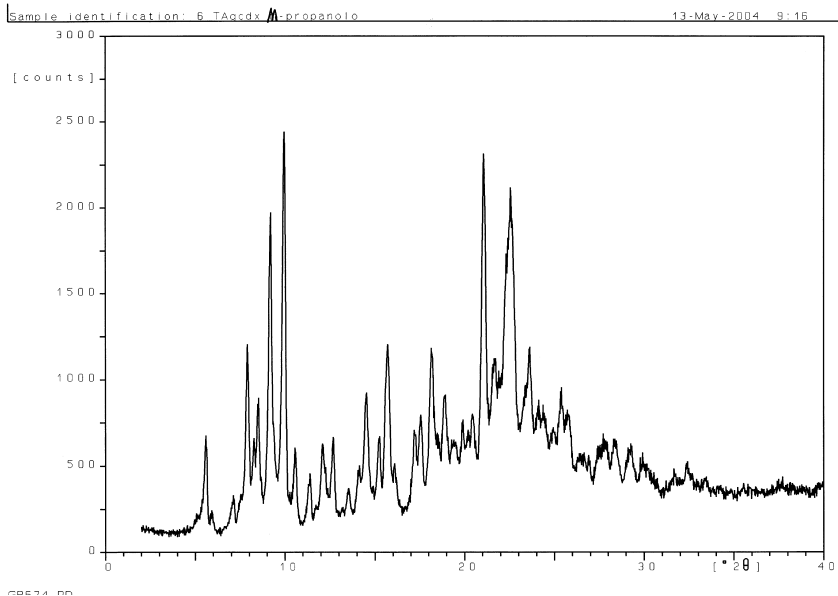
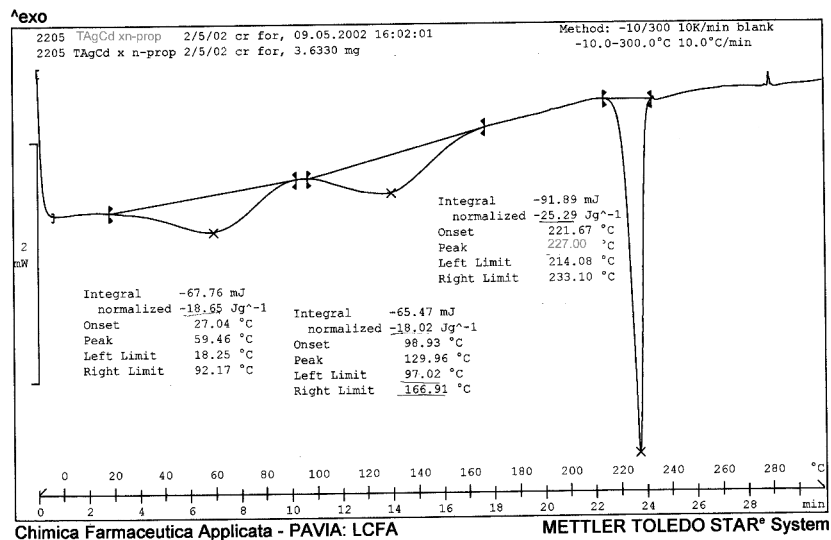
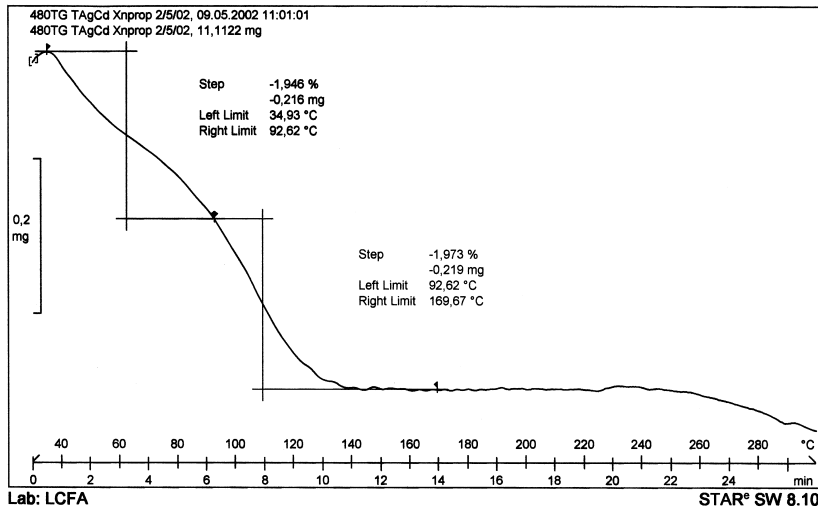
### 3 TA $\gamma$ CD·1.5(acetone)



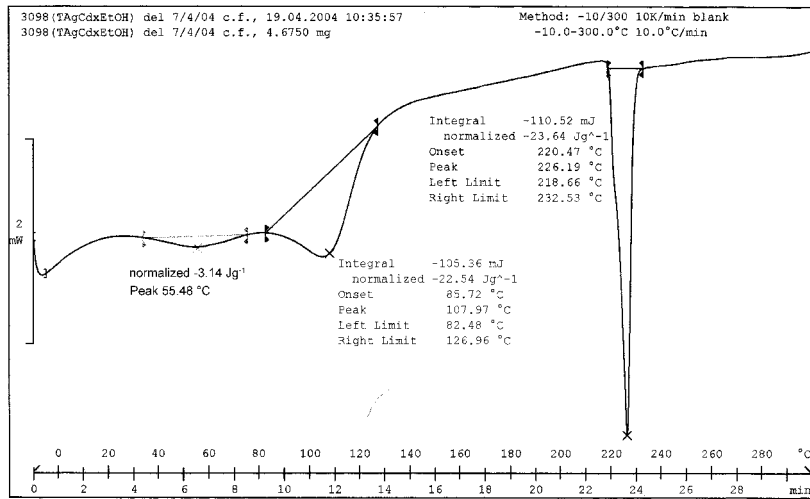
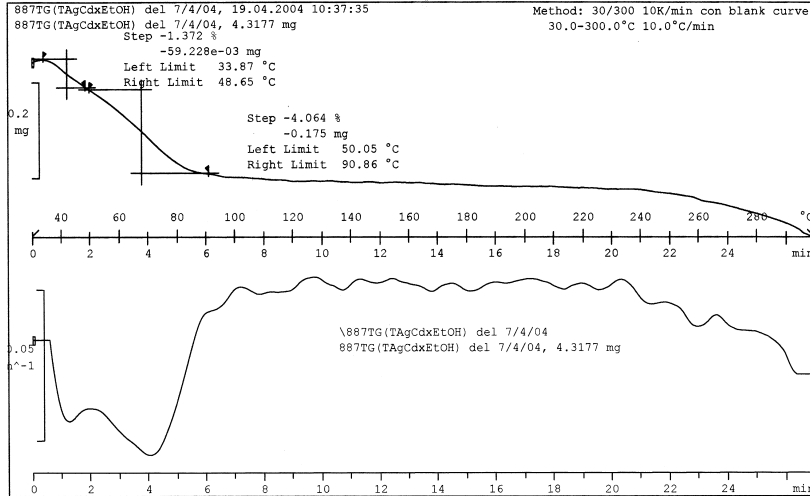
Sample identification: 3 TA $\gamma$ cdxACET/H<sub>2</sub>O 1:1 13-May-2004 9:15



# 4 TAγCD·1.5(*n*-propanol)

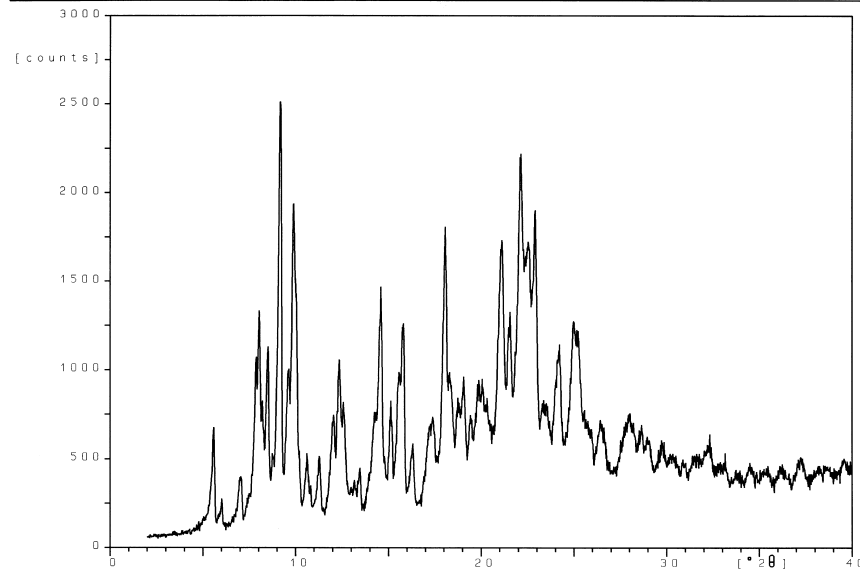


## 5 TA $\gamma$ CD-3(ethanol)



Sample identification: 17 TAqCd x EtOH

18-Nov-2003 9:15



GB638\_RD

TABLE: Summary of thermal data for solvates 1-5

<b>Solvate</b>	<b>Solvent of crystallization</b>	<b>Step 1 mass loss<sup>a</sup> (%)</b>	<b>Step 2 mass loss<sup>a</sup> (%)</b>	<b>Total mass loss (%)</b>
<b>1</b>	(a) Ethanol/water 1/1 (v/v) (b) EtOH/water 96.4% by wt EtOH	1.1	3.2	4.3
<b>2</b>	2-propanol/water 4/1 (v/v)	0.77	3.5	4.27
<b>3</b>	Acetone/water 1/1 (v/v)	1.8	2.0	3.8
<b>4</b>	<i>n</i> -propanol	1.9	1.97	3.87
<b>5</b>	EtOH (100%)	1.4	4.1	5.5

<sup>a</sup>Averages of triplicate determinations