

Fig. S1. SEM and TEM images of fresh Co- (a, b) and Fe-containing (c, d) CNTs.

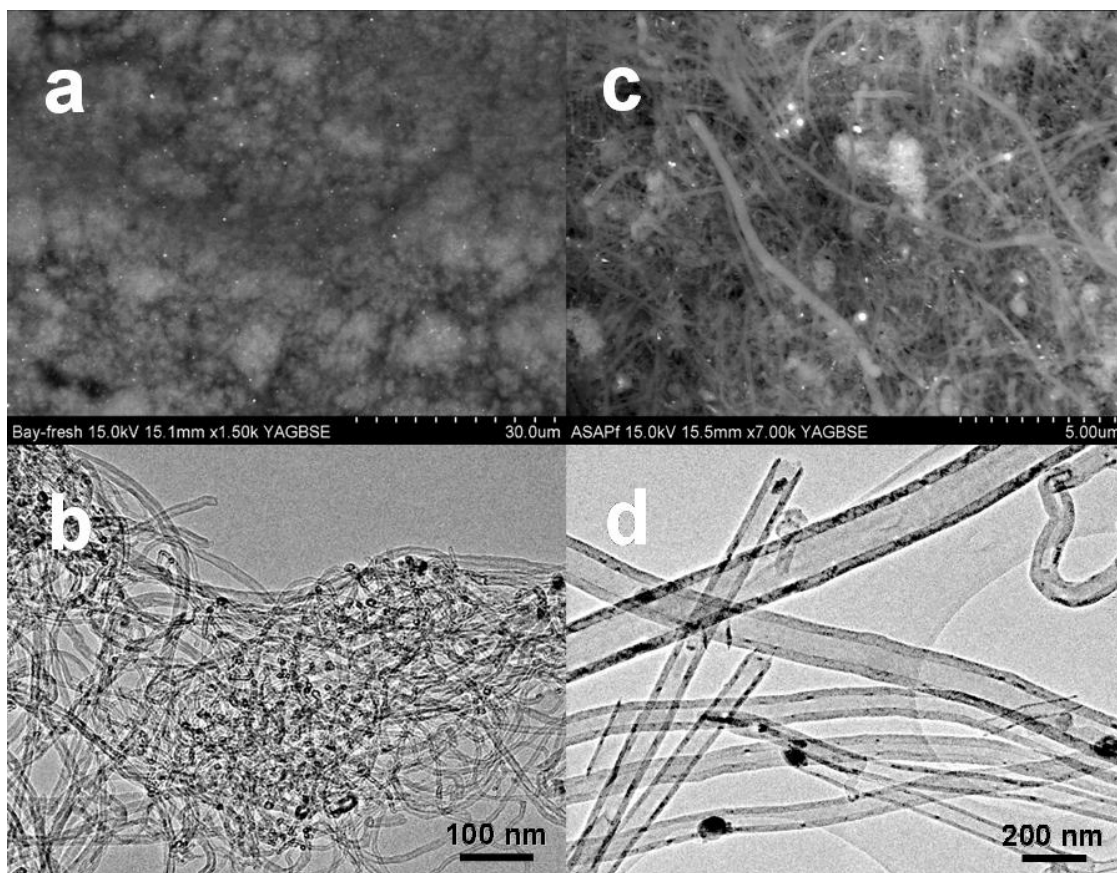


Fig. S2. EDX spectra of CNTs (up) and metal particles (down) in TEM images of Co-containing CNTs (Fig. 1a). Signal of Cu originates from the Cu grid.

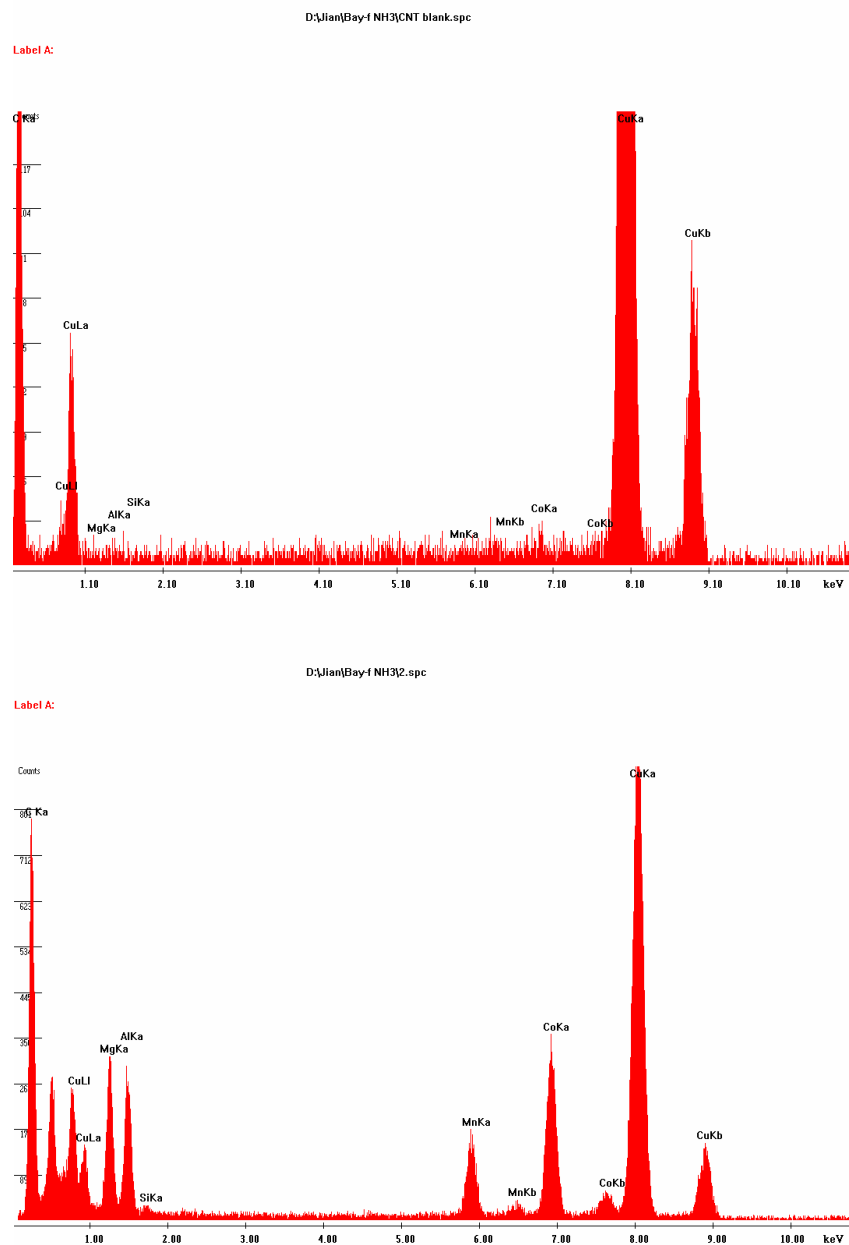


Fig. S3. XPS spectra of fresh and used CNTs.

